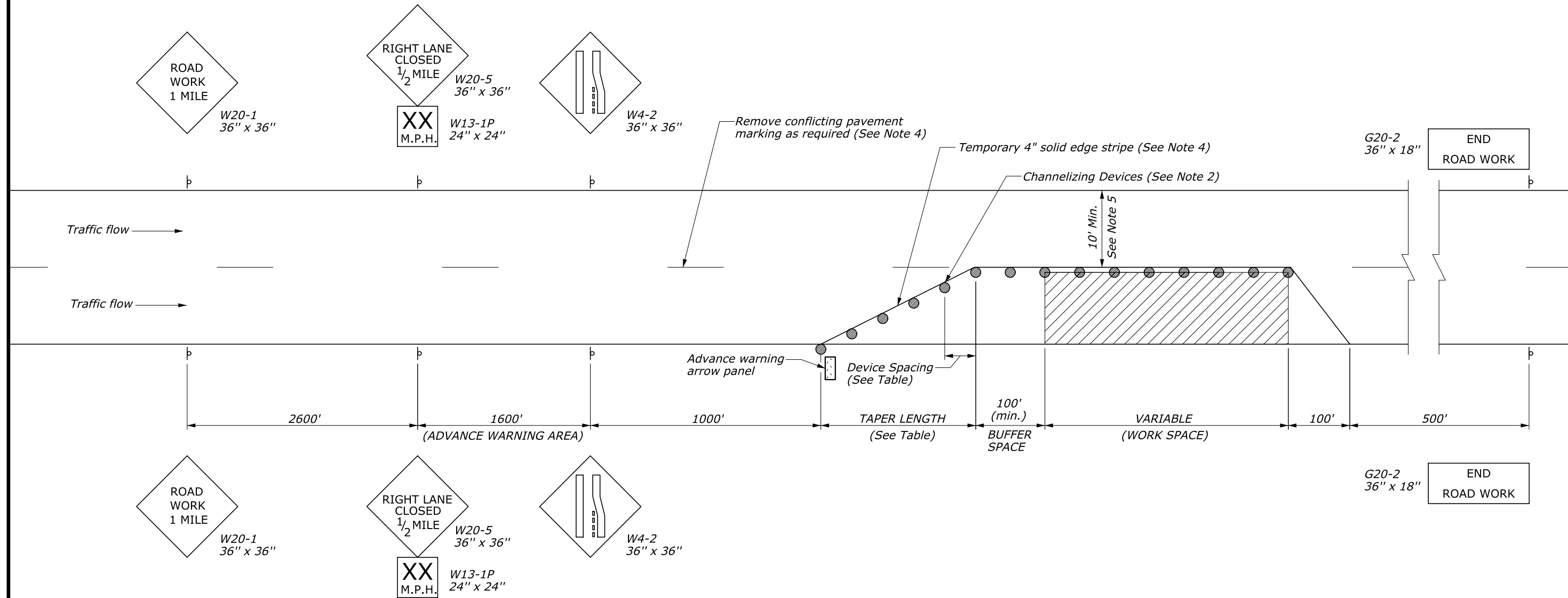


TYPICAL APPLICATION: ONE WAY, TWO LANE ROADWAY, CLOSING ONE LANE



NOTES:

- Final location and spacing of signs and devices may be changed to fit field conditions as approved by the CO.
- For operations that require a lane closure for a day or less, drums may be substituted with cones, type A in the work area as approved by the CO.
- Right lane closure is shown. For left lane closure, substitute W20-5 and W4-2 left lane closure signs.
- For long-term operations (operations where the lane is continuously closed for more than three days) remove conflicting pavement markings and place edge stripe as shown.
- Use minimum width shown unless otherwise specified in Section 156 of the Special Contract Requirements.

LENGTH AND SPACING TABLE					
APPROACH SPEED (MPH)	MINIMUM TAPER LENGTH (FT)			CHANNELIZING DEVICE SPACING (FT)	
	LANE WIDTH			TAPER AREA	WORK AREA
	10 ft.	11 ft.	12 ft.		
25	105	115	125	25	50
30	150	165	180	30	60
35	205	225	245	35	70
40	270	295	320	40	80
45	450	495	540	45	90
50	500	550	600	50	100
55	550	605	660	55	100

* Approach speed based on the regulatory posted speed, not the advisory speed.

NO SCALE

U.S. DEPARTMENT OF TRANSPORTATION
FEDERAL HIGHWAY ADMINISTRATION
EASTERN FEDERAL LANDS HIGHWAY DIVISION

U.S. CUSTOMARY DETAIL

CONSTRUCTION TRAFFIC CONTROL SINGLE LANE CLOSURE LAYOUT

DETAIL APPROVED FOR USE

APPROVED: MAY 2011
REVISED: APRIL 2015

DETAIL
E635-05