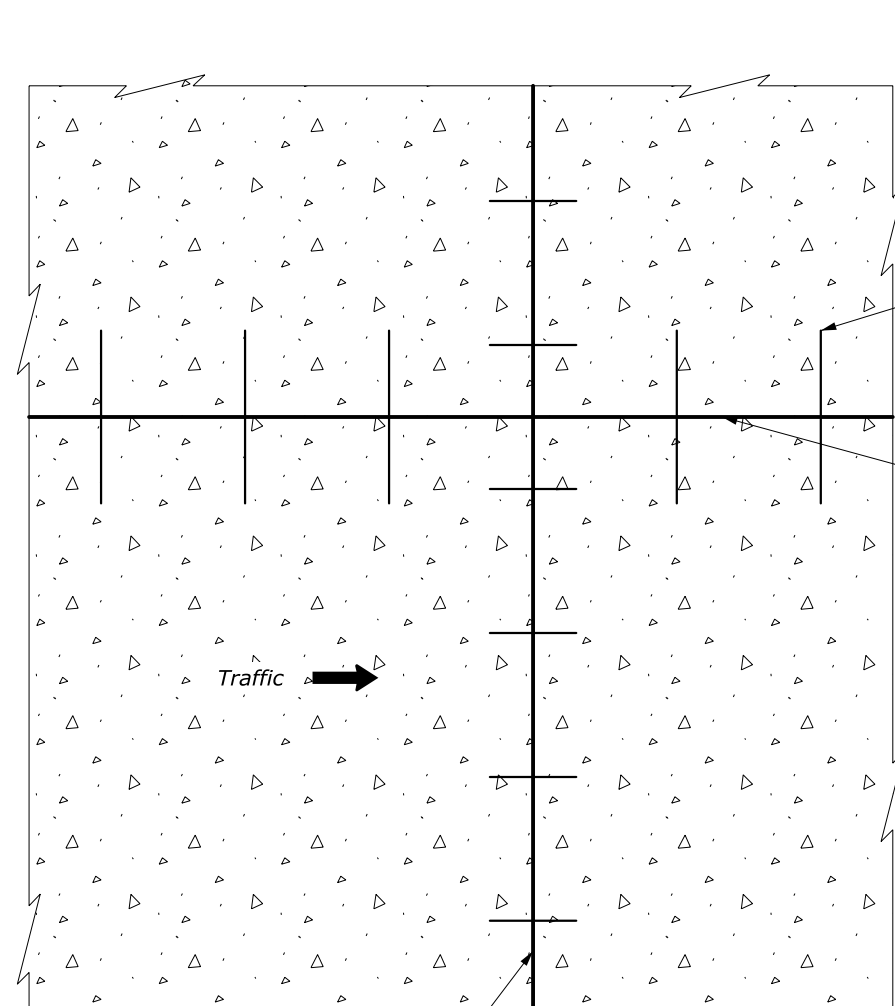


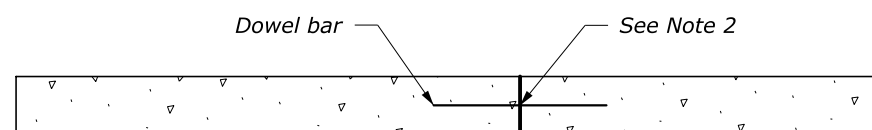
**NOTES:**

1. Provide the same type of dowel assemblies and tie bars for joints in plain portland cement concrete pavement as shown for joints in reinforced pavement.
2. See Detail ET 501-2 for joint and joint sealing details.
3. Lap longitudinal and transverse reinforcement not less than 15 inches.

PAVEMENT THICKNESS (IN)	TRANSVERSE JOINT SPACING (FT)
$T < 6$	10
$6 \leq T < 12$	15

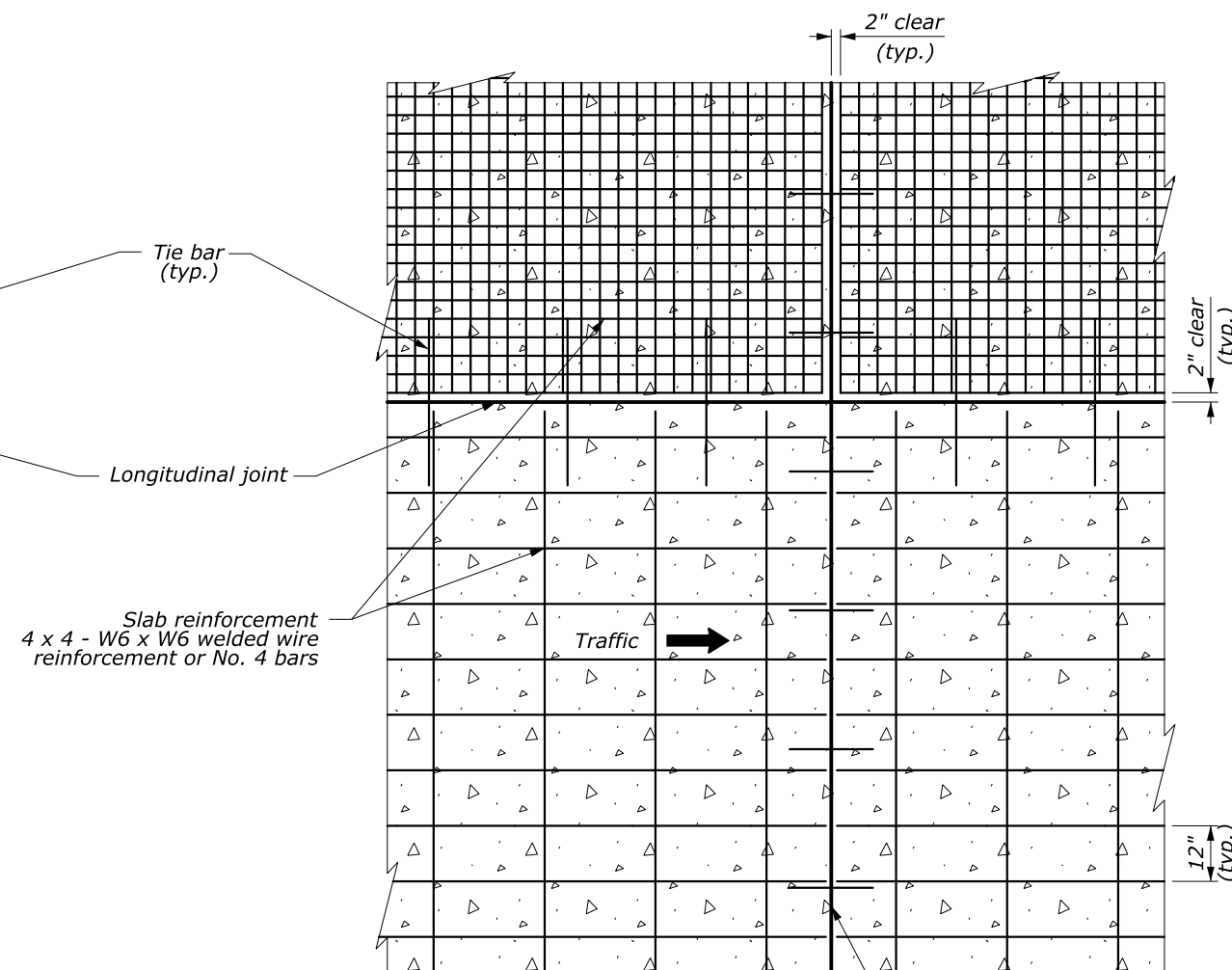


PLAN

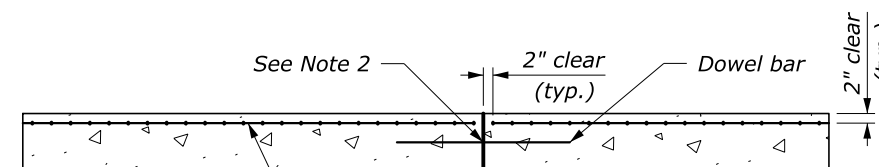


PROFILE

**PLAIN MINOR CONCRETE PAVEMENT**



PLAN



PROFILE

**REINFORCED MINOR CONCRETE PAVEMENT**

M:\PROJECTS\...COLLABORATION\...Details\501-502\18\18\50101.EFL\_TEMP.dgn  
 21-Apr-2020 09:11 AM

NO SCALE

U.S. DEPARTMENT OF TRANSPORTATION FEDERAL HIGHWAY ADMINISTRATION EASTERN FEDERAL LANDS HIGHWAY DIVISION	
U.S. CUSTOMARY DETAIL	
<b>MINOR CONCRETE PAVEMENT</b>	
REVISOR: 9/2016 4/2020	DETAIL ET 501-1