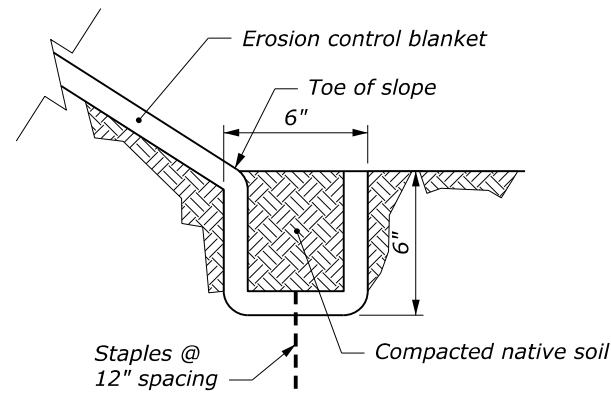
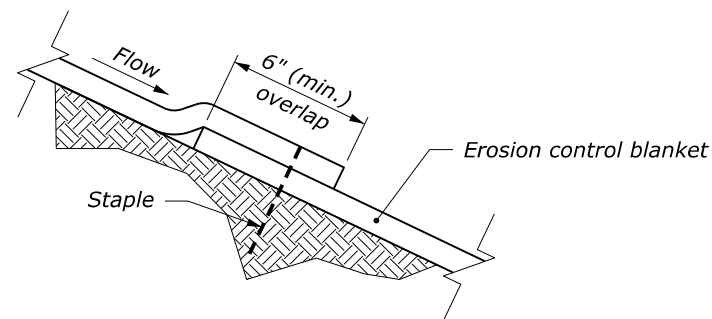


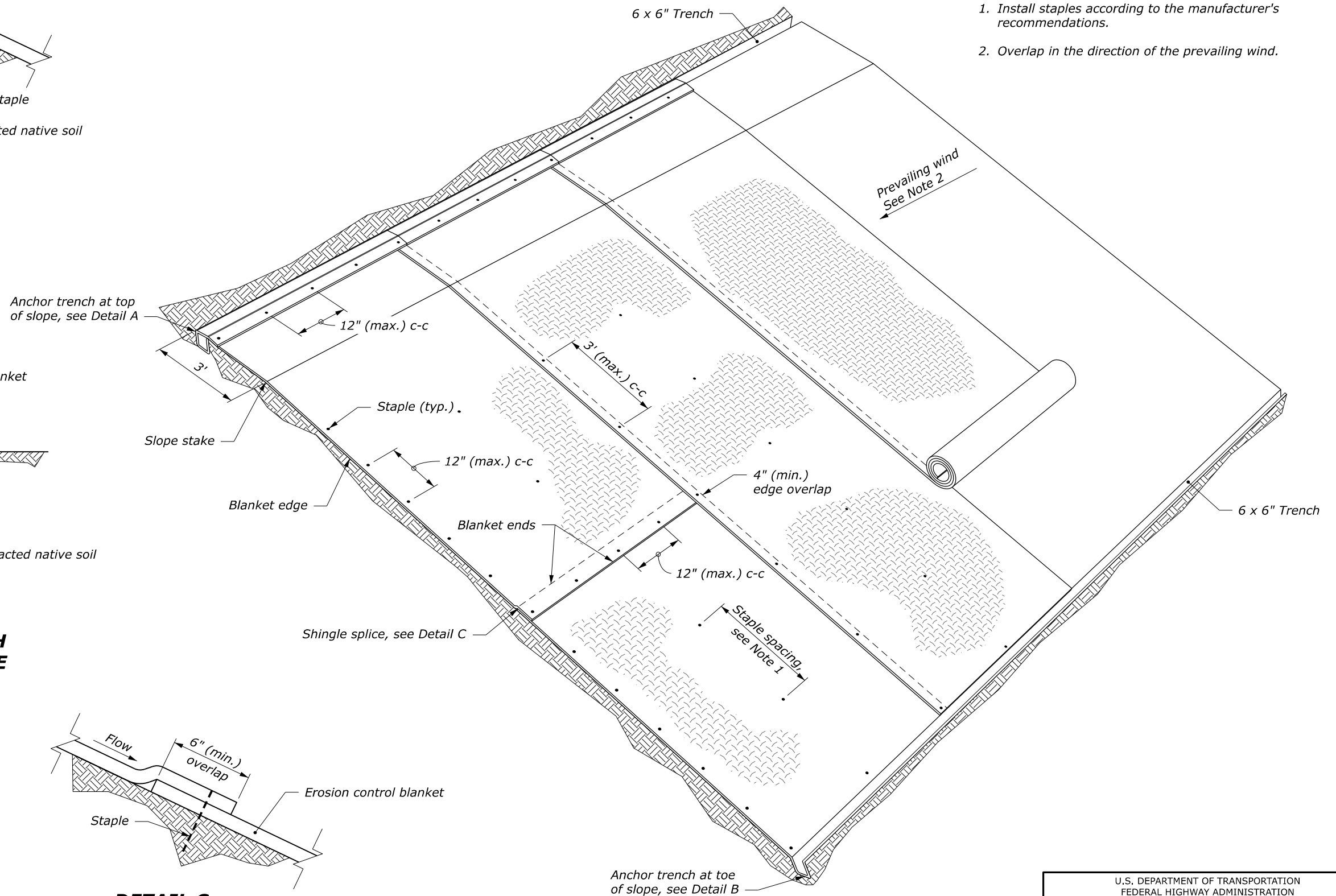
**DETAIL A
ANCHOR TRENCH
AT TOP OF SLOPE**



**DETAIL B
ANCHOR TRENCH
AT TOE OF SLOPE**



**DETAIL C
SHINGLE SPLICE**



PERSPECTIVE VIEW

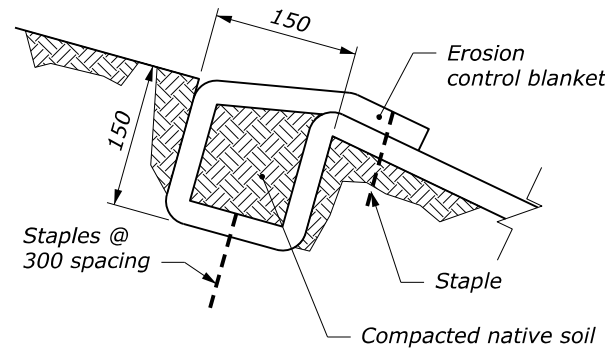
NOTE:

1. Install staples according to the manufacturer's recommendations.
2. Overlap in the direction of the prevailing wind.

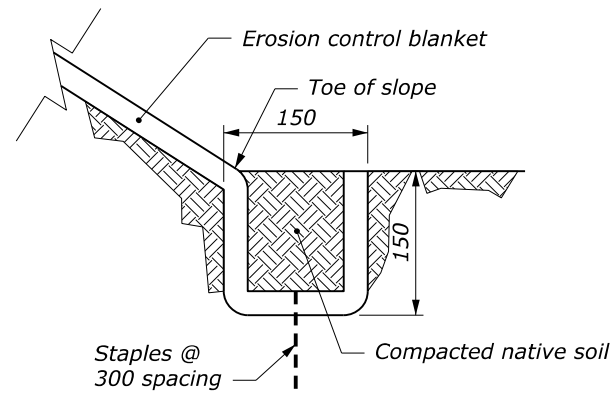
c:\pwwork\0413405\W629-1.dgn [Det W629-1] 21 February 2023 9:50 AM

NO SCALE

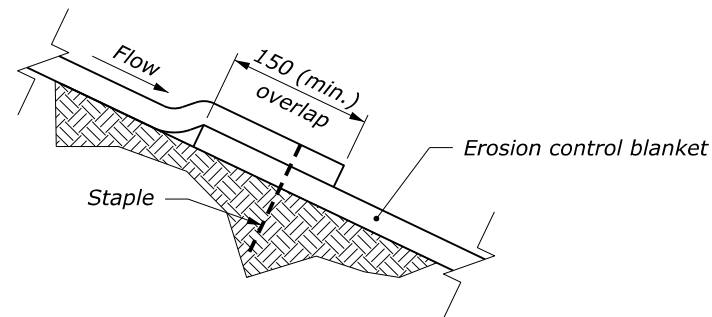
U.S. DEPARTMENT OF TRANSPORTATION FEDERAL HIGHWAY ADMINISTRATION OFFICE OF FEDERAL LANDS HIGHWAY	
WFLHD DETAIL	
ROLLED EROSION CONTROL PRODUCT ON SLOPES	
DETAIL APPROVED FOR USE 10/2016	DETAIL
REVISED:	W629-1



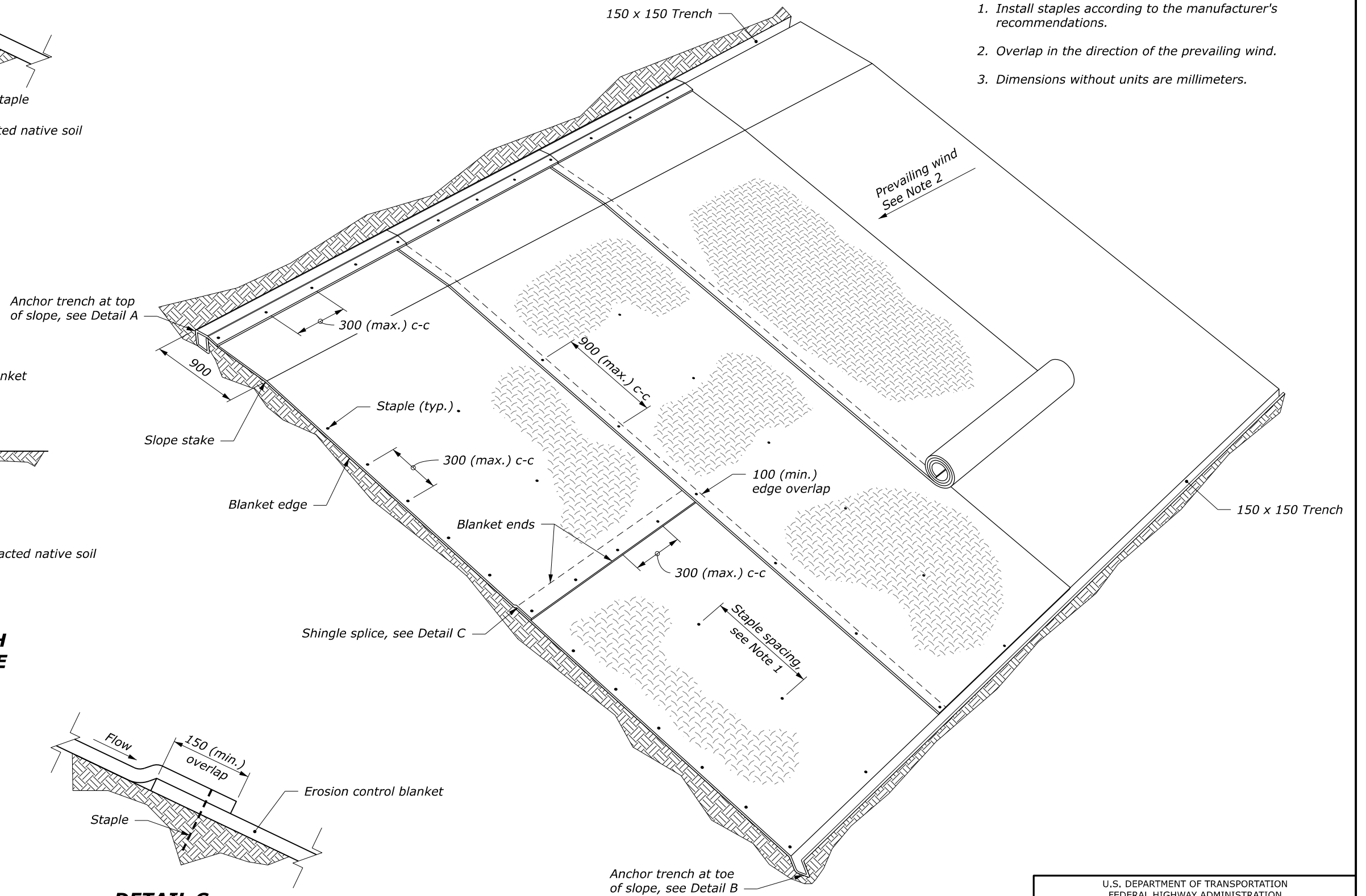
**DETAIL A
ANCHOR TRENCH
AT TOP OF SLOPE**



**DETAIL B
ANCHOR TRENCH
AT TOE OF SLOPE**



**DETAIL C
SHINGLE SPLICE**



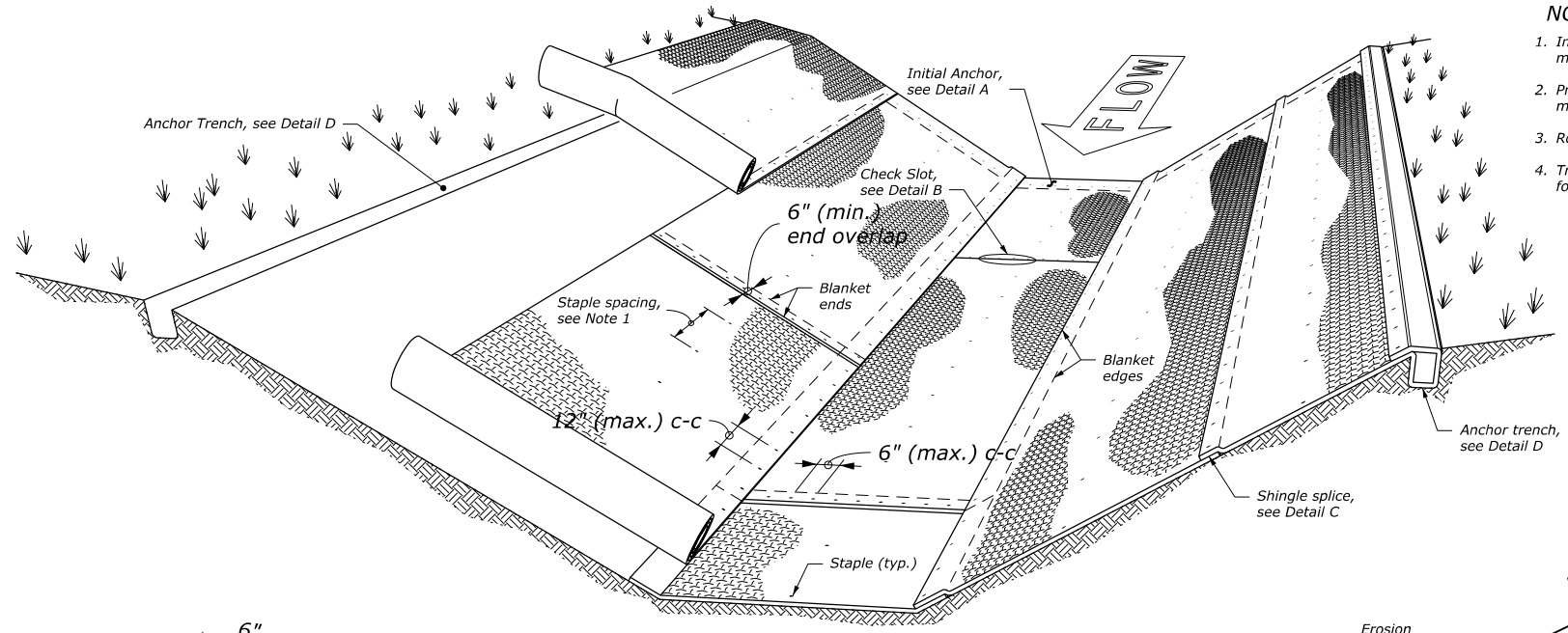
PERSPECTIVE VIEW

NOTE:

1. Install staples according to the manufacturer's recommendations.
2. Overlap in the direction of the prevailing wind. See Note 2.
3. Dimensions without units are millimeters.

NO SCALE

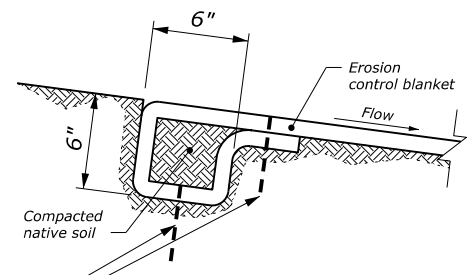
U.S. DEPARTMENT OF TRANSPORTATION FEDERAL HIGHWAY ADMINISTRATION OFFICE OF FEDERAL LANDS HIGHWAY	
WFLHD METRIC DETAIL	
ROLLED EROSION CONTROL PRODUCT ON SLOPES	
DETAIL APPROVED FOR USE 10/2016	DETAIL
REVISED:	WM629-1



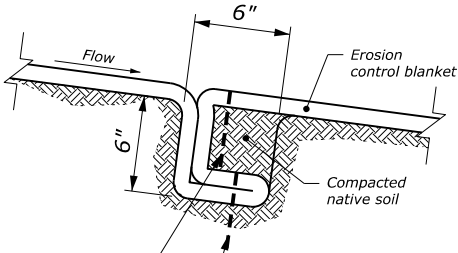
NOTE:

1. Install staples according to the manufacturer's recommendations.
2. Provide check slots according to the manufacturer's recommendations.
3. Roll ends may be spliced in a check slot.
4. Trapezoidal ditch shown. Similar details for a V-ditch.

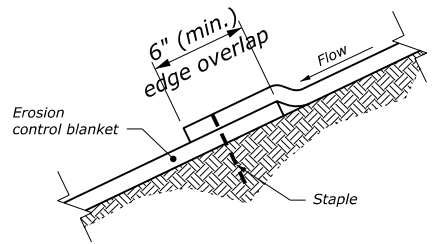
PERSPECTIVE VIEW



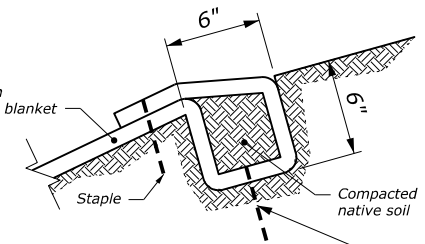
**DETAIL A
INITIAL ANCHOR**



**DETAIL B
CHECK SLOT**
See Note 2



**DETAIL C
SHINGLE SPLICE**



**DETAIL D
ANCHOR TRENCH**

Staples 12" (max.) c-c

Staple 6" (max.) c-c

Staple 3' (max.) c-c

Staple 12" (max.) c-c

NO SCALE

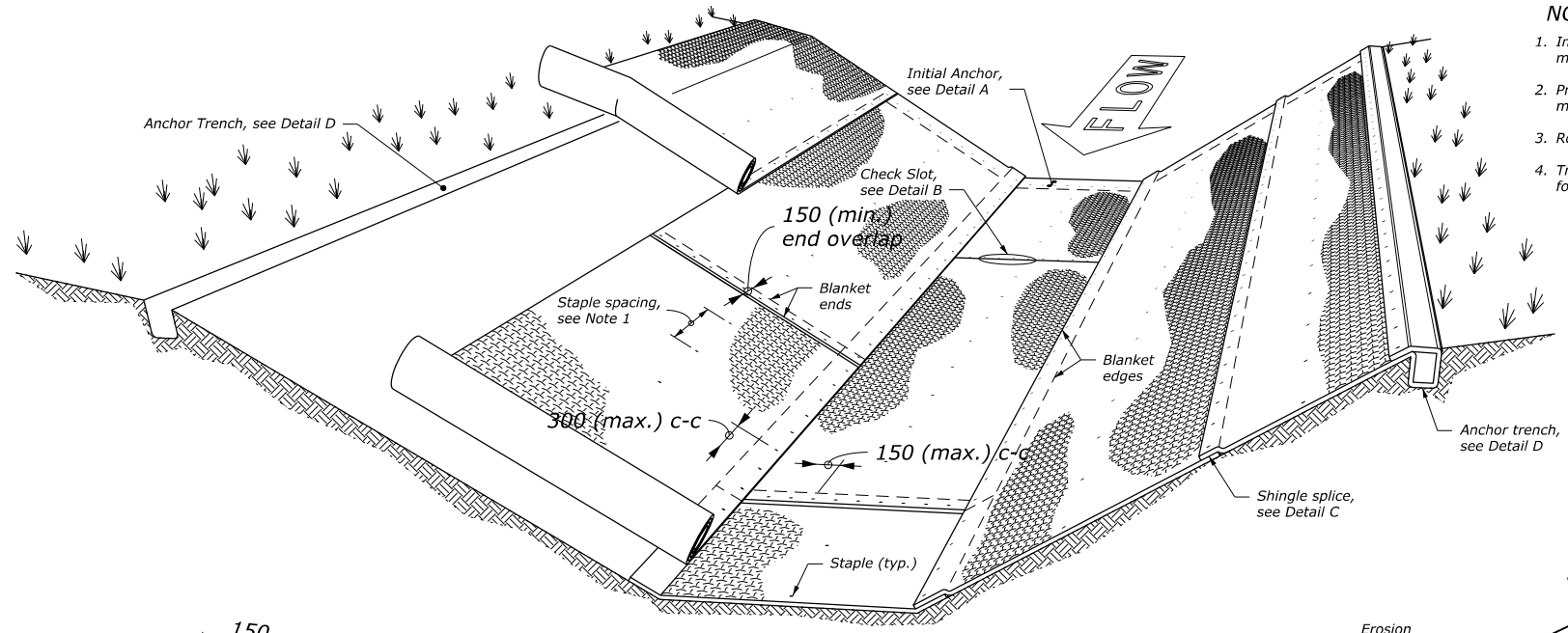
U.S. DEPARTMENT OF TRANSPORTATION
FEDERAL HIGHWAY ADMINISTRATION
OFFICE OF FEDERAL LANDS HIGHWAY

WFLHD DETAIL

**ROLLED EROSION CONTROL
PRODUCT IN CHANNELS**

DETAIL APPROVED FOR USE 10/2016
REVISED:

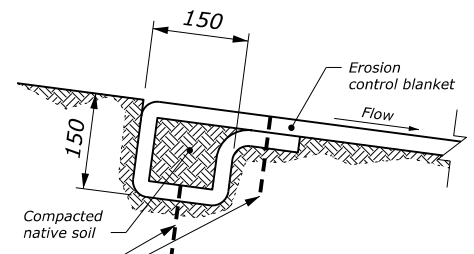
DETAIL
W629-2



NOTE:

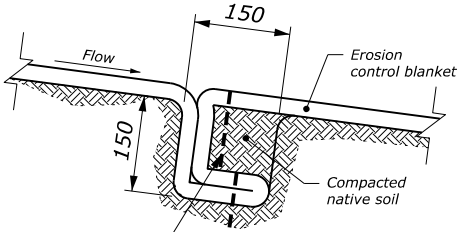
1. Install staples according to the manufacturer's recommendations.
2. Provide check slots according to the manufacturer's recommendations.
3. Roll ends may be spliced in a check slot.
4. Trapezoidal ditch shown. Similar details for a V-ditch.
5. Dimensions without units are millimeters.

PERSPECTIVE VIEW



**DETAIL A
INITIAL ANCHOR**

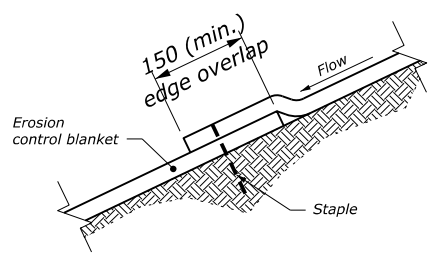
Staples 300 (max.) c-c



**DETAIL B
CHECK SLOT**
See Note 2

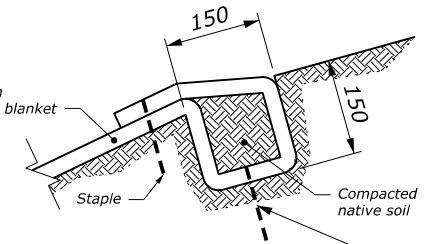
Staple 150 (max.) c-c

Staple 900 (max.) c-c



**DETAIL C
SHINGLE SPLICE**

NO SCALE



**DETAIL D
ANCHOR TRENCH**

Staple 300 (max.) c-c

U.S. DEPARTMENT OF TRANSPORTATION FEDERAL HIGHWAY ADMINISTRATION OFFICE OF FEDERAL LANDS HIGHWAY	
WFLHD METRIC DETAIL	
ROLLED EROSION CONTROL PRODUCT IN CHANNELS	
DETAIL APPROVED FOR USE 10/2016	DETAIL
REVISED:	WM629-2