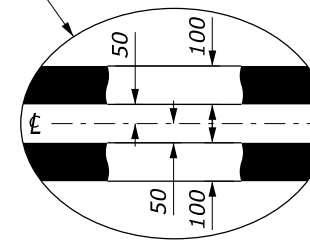


NOTE:

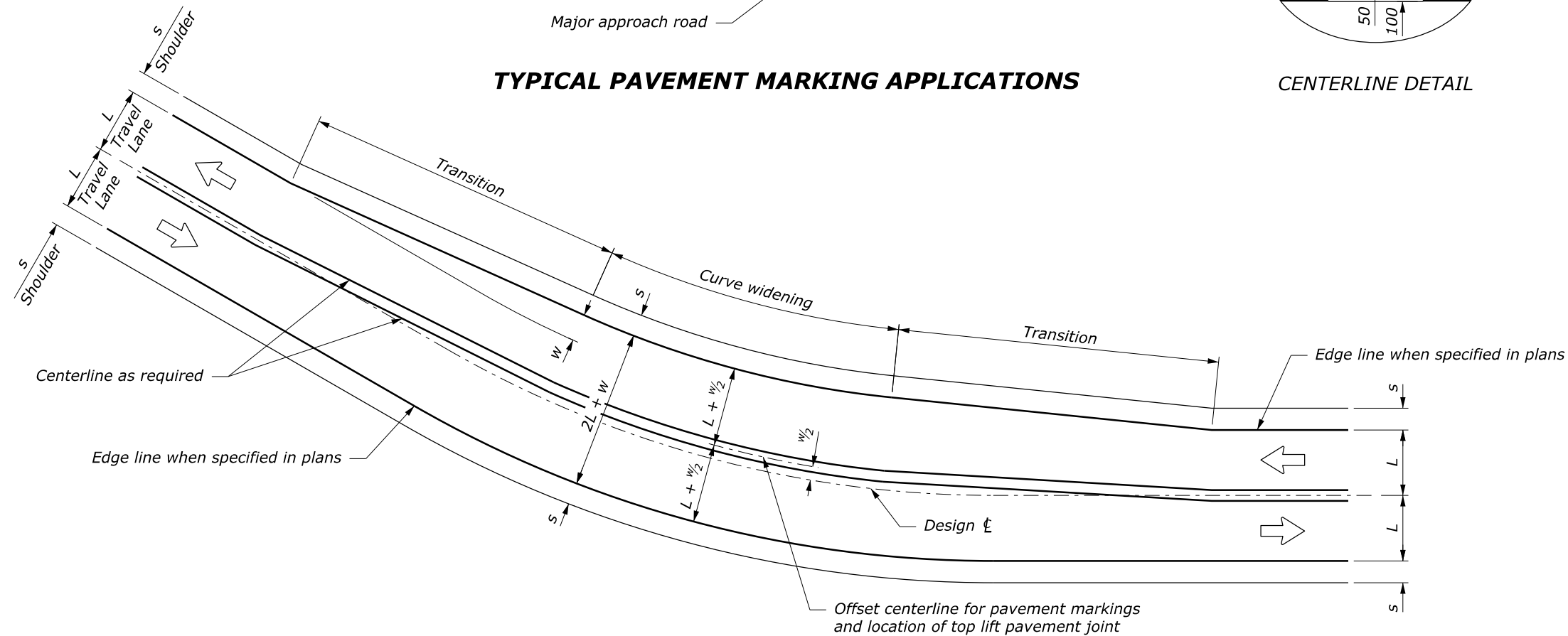
1. Place edge line pavement markings at asphalt/concrete curb interface when curb is present.
2. Paint centerline pavement markings on curves with curve widening "w" to achieve equal lane widths within the roadway. Maintain a constant shoulder width "s" throughout the curve widening area. See staking details for curve widening transition locations.
3. Typical pavement marking widths are shown. Use wider pavement markings when specified on the plans or when required by the maintaining agency.
4. Dimensions without units are millimeters



Increase spacing between parallel lines when specified in the plans or when required by the maintaining agency

TYPICAL PAVEMENT MARKING APPLICATIONS

CENTERLINE DETAIL



CENTERLINE MODIFICATION FOR CURVES WITH WIDENING APPLIED ON INSIDE

See Note 2 for treatment of curves when widening "w" is split equally on both sides of centerline

NO SCALE

U.S. DEPARTMENT OF TRANSPORTATION FEDERAL HIGHWAY ADMINISTRATION OFFICE OF FEDERAL LANDS HIGHWAY	
WFLHD METRIC DETAIL	
LINEAR PAVEMENT MARKINGS	
DETAIL APPROVED FOR USE 10/2007 REVISED: 10/2012	DETAIL WM634-2