

# HALONA ST. BRIDGE PROJECT

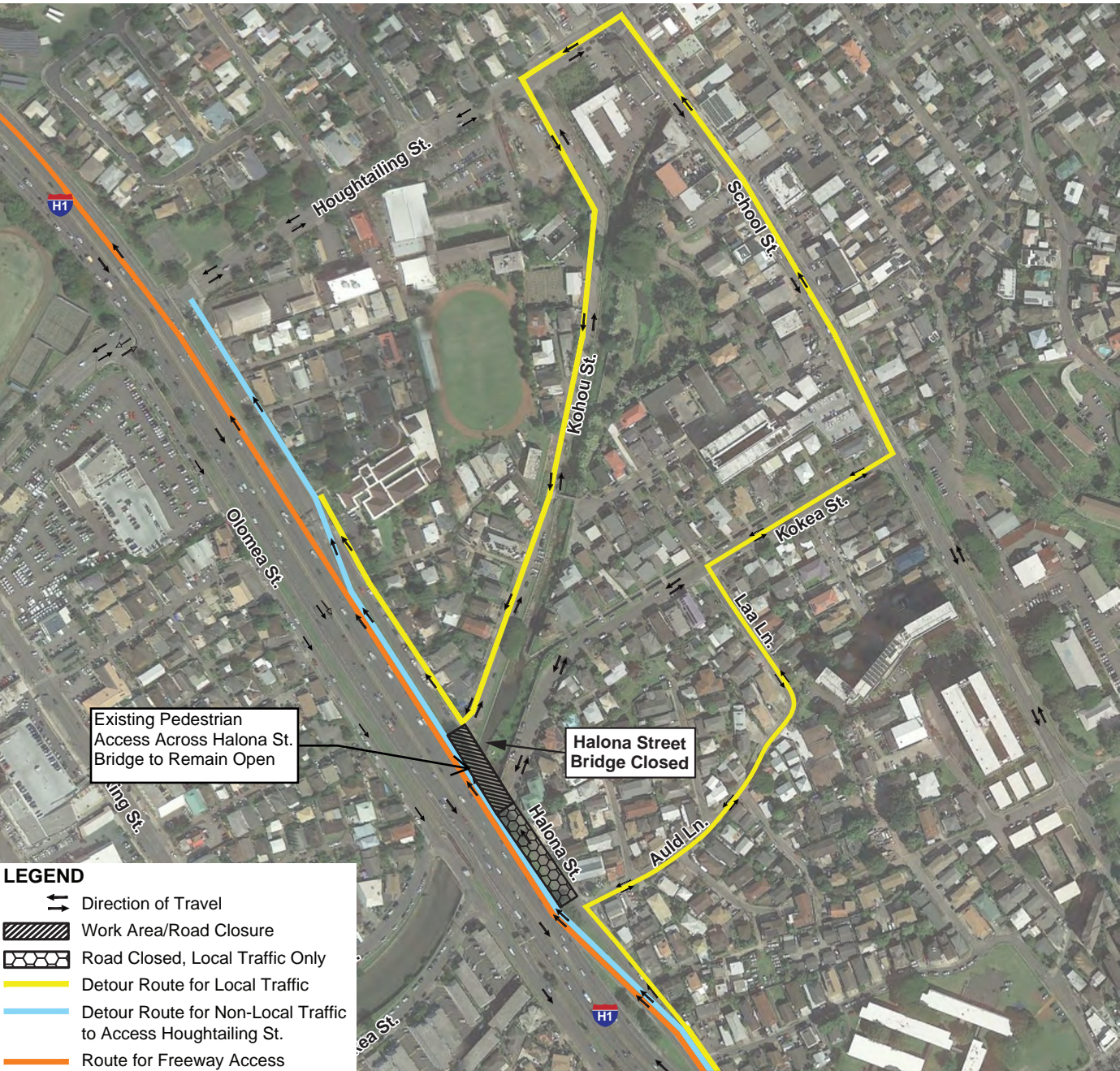
[Project No. HI STP HI(1)]

**Kokea St. Closure (TCP-02)  
(Monday-Friday 8:30am-3:30pm)**

Beginning Friday, January 20th, 2017, construction activities will commence to demo and replace the existing Halona St. Bridge. Construction is expected to last until Fall 2017. Halona St. Bridge and portions of Kokea St. on the Mauka side of the H1 Freeway will be closed from Monday thru Friday from 8:30am-3:30pm. Motorists wanting to access Houghtailing St. can do so from H-1 Westbound or N. School St. Motorists wanting to access Kohou St. will be detoured onto N. School St. and then onto Houghtailing St. Motorists wanting to access the closed section of Kokea St. will be detoured through Auld Ln. Local access will be maintained throughout this time period. Existing pedestrian access across Halona St. Bridge will remain available for pedestrians and bicyclists to use.

Motorists are encouraged to use alternate routes if possible, allow for extra travel time when driving near work area, and observe/follow all construction traffic controls. Please exercise caution when commuting through this area.

The Hawaii Department of Transportation, Central Federal Lands Highway Division, and Kiewit Infrastructure West Co., thank you for your patience and understanding during these operations.



**LEGEND**

- Direction of Travel
- Work Area/Road Closure
- Road Closed, Local Traffic Only
- Detour Route for Local Traffic
- Detour Route for Non-Local Traffic to Access Houghtailing St.
- Route for Freeway Access



# HALONA ST. BRIDGE PROJECT

[Project No. HI STP HI(1)]

## 24-HR Bridge Closure (TCP-01)

Beginning Friday, January 20th, 2017, construction activities will commence to demo and replace the existing Halona St. Bridge. Construction is expected to last until Fall 2017. Halona St. Bridge will be closed permanently to vehicular traffic 24 hrs/day. Motorists wanting to access Houghtailing St. can do so from H1-Westbound or N. School St. Motorists wanting to access Kohou St. will be detoured onto N. School St and then onto Houghtailing St. Local access will be maintained throughout this time period. Existing pedestrian access across Halona St. Bridge will remain available for pedestrians and bicyclists to use.

Motorists are encouraged to use alternate routes if possible, allow for extra travel time when driving near work area, and observe/follow all construction traffic controls. Please exercise caution when commuting through this area.

The Hawaii Department of Transportation, Central Federal Lands Highway Division, and Kiewit Infrastructure West Co., thank you for your patience and understanding during these operations.



### LEGEND

- ↔ Direction of Travel
- ▨ Work Area/Road Closure
- Detour Route for Local Traffic
- Detour Route for Non-Local Traffic to Access Houghtailing St.
- Route for Freeway Access