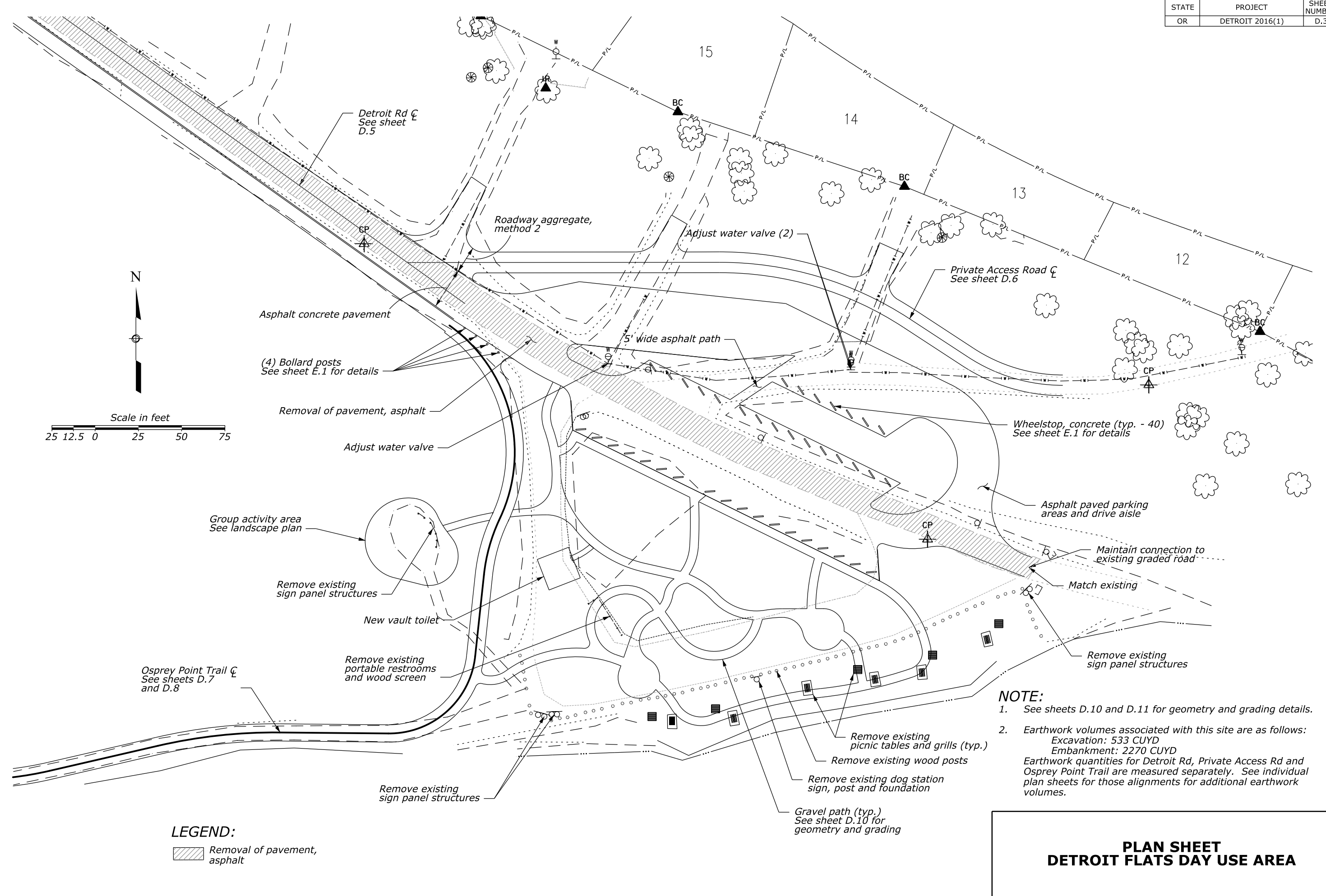


| | | |
|-------|-----------------|--------------|
| STATE | PROJECT | SHEET NUMBER |
| OR | DETROIT 2016(1) | D.3 |


07/2017 C. Pot
 03/2017 Checked by: B. Roche
 Designed by: K:\80498_WFL\HD_ID\Q17\F00019_80498K_DetroitArea\Visitor\cadd\c\l\or-s4720161.dwg
 25 July 2017 8:52 AM



NOTE:

- See sheets D.10 and D.11 for geometry and grading details.
- Earthwork volumes associated with this site are as follows:
 Excavation: 533 CU YD
 Embankment: 2270 CU YD
 Earthwork quantities for Detroit Rd, Private Access Rd and Osprey Point Trail are measured separately. See individual plan sheets for those alignments for additional earthwork volumes.

LEGEND:

 Removal of pavement, asphalt

**PLAN SHEET
DETROIT FLATS DAY USE AREA**