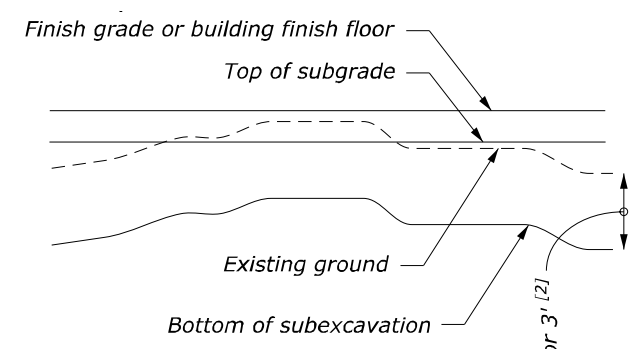


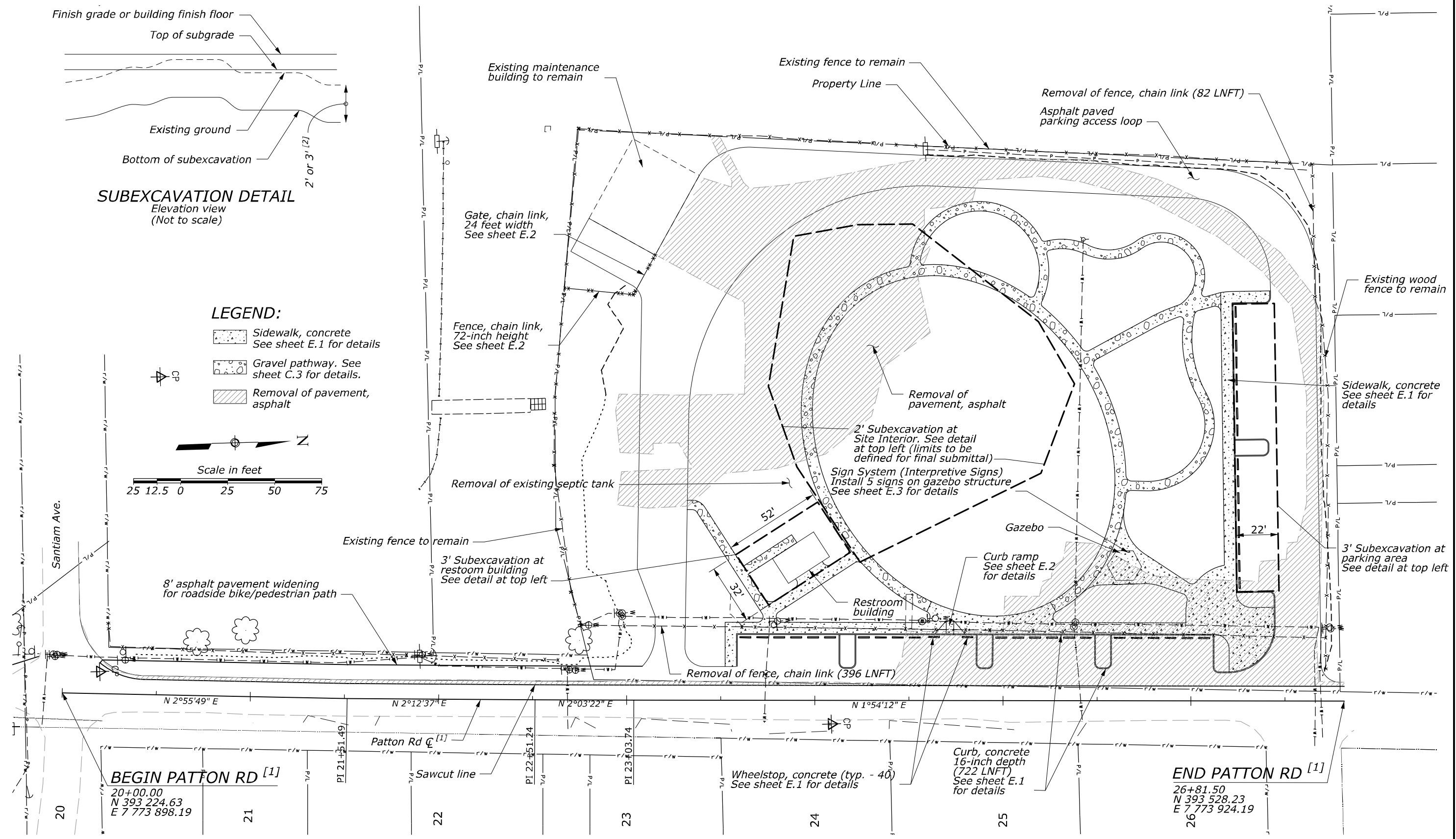
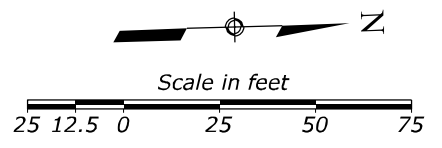
07/2017 C. Pot  
 03/2017 Checked by: B. Roche  
 Designed by: K:\80498\_WFLHD\_ID\17700019\_80498K\_DetroitAreaVisitorPortal\cadd\civil\or-e4720161d04.dgn  
 25 July 2017 1:28 PM



**SUBEXCAVATION DETAIL**  
Elevation view  
(Not to scale)

**LEGEND:**

- Sidewalk, concrete  
See sheet E.1 for details
- Gravel pathway. See sheet C.3 for details.
- Removal of pavement, asphalt



**NOTE:**

1. See sheet D.12 for coordinate and grading plan.
2. See sheet H.20 for landscape plan.
3. See sheet J.3 for signing and striping plan.
4. See sheet K.2 for utility and lighting plan.
5. Earthwork volumes associated with this site are as follows:  
Excavation: 3765 CUYD  
Embankment: 540 CUYD  
Earthwork quantities for Patton Rd are included in the volumes listed above.

**FOOTNOTE:**

- [1] Patton Rd centerline alignment provided for control purposes. Centerline location shown is approximate and not based on as-built or survey record data.
- [2] 2' depth at site interior. 3' depth at north parking area and restroom building.

**PLAN SHEET VISITOR PORTAL**