

MIDDLE FORK SNOQUALMIE RIVER ROAD

CONSTRUCTION NEWSLETTER

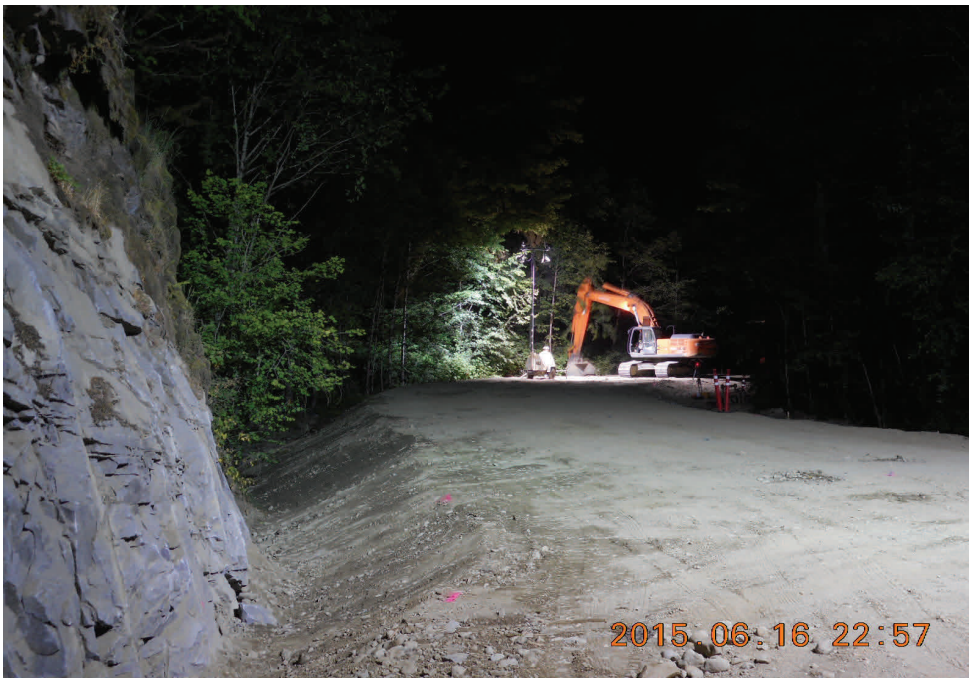
June 18, 2015

CONSTRUCTION ACTIVITIES

The Middle Fork Snoqualmie River Road will be open Fridays at noon through Mondays at noon through October 2015. The road will be closed at Valley Camp from noon Mondays through noon Fridays.

Much of the roadway is rock or dirt surfaced and may be rough in places.

Next week the contractor will continue working on roadway repairs, embankment construction, placing and finishing crushed rock, and roadway drainage features. Paving is scheduled to resume late June through early July.



Above: Finishing the roadway crossing the slide area near the CCC trail.

ROAD CLOSURES & DELAYS

2015 ROAD CLOSURES

- Lake Dorothy Road (Upper Couplet) is **Closed** to all Public Traffic
- Full road closures of the Middle Fork Road extend through October 30, 2015 as follows:

Eastern Intersection of Lake Dorothy Road (Upper Couplet) to Middle Fork Campground

Road Closed*: 12:00pm (noon) Monday — 12:00pm (noon) Friday

* Alternate Schedule for Memorial Day, Independence Day, and Labor Day weekends. See Closure Calendar

Road Open*: 12:00pm (noon) Friday — 12:00pm (noon) Monday

* Up to 60 minute Delays Allowed

Road Closure maps may be found at:

<http://www.wfl.fhwa.dot.gov/projects/wa/snoqualmie/map.htm>

Project Information

Contractor:

Active Construction Inc.
Tacoma, WA

Start Date:

April 14, 2014

Completion Date:

August 31, 2016

Award Amount:

\$14,990,222.78



King County



WASHINGTON STATE DEPARTMENT OF
Natural Resources



Mike Niemi

Project Engineer

Phone 425-292-0431

Email mfsnoqualmie@dot.gov

Office 8050 Railroad Ave SE, Ste. C
Snoqualmie, WA 98065