

MIDDLE FORK SNOQUALMIE RIVER ROAD

CONSTRUCTION NEWSLETTER

December 17, 2015

MIDDLE FORK SNOQUALMIE RIVER ROAD OPENS DEC 18

The Middle Fork Snoqualmie River Road is scheduled to reopen at noon Friday December 18. The road will be open 7 days a week. The contractor will have a small crew on site next week finishing cleanup. No delays are anticipated.

Most of the road is rock surfaced and may not be passable to low clearance two wheel drive vehicles in places.

This will be the last weekly newsletter until construction resumes in the spring.

Project Information

Contractor:

Active Construction Inc.
Tacoma, WA

Start Date:

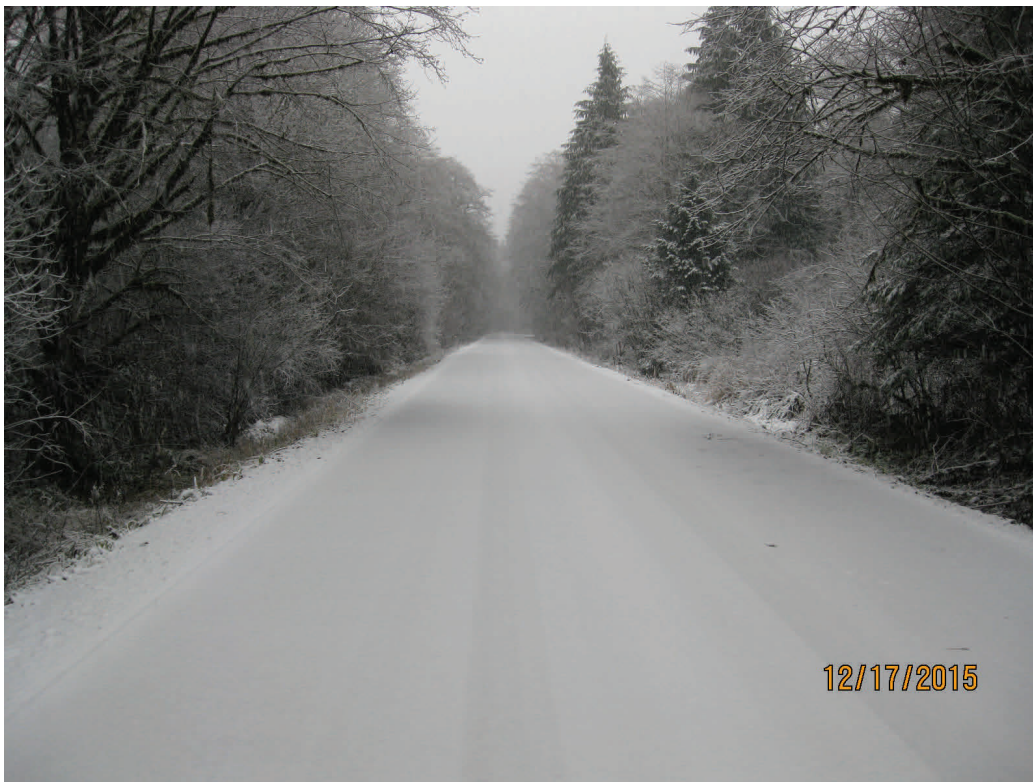
April 14, 2014

Completion Date:

August 31, 2016

Award Amount:

\$14,990,222.78



Above: Roadway near the Middle Fork trailhead parking area.



King County



WASHINGTON STATE DEPARTMENT OF
Natural Resources



ROAD CLOSURES & DELAYS

- Lake Dorothy Road (Upper Couplet) is **Closed** to all Public Traffic
- Middle Fork Snoqualmie River Road is **Open** to Public Traffic above Mailbox Peak starting at noon Friday December 18.
- The Eastern Intersection of Lake Dorothy Road (Upper Couplet) to Mailbox Peak will remain **Open**.

Mike Niemi

Project Engineer

Phone 425-292-0431

Email mfsnoqualmie@dot.gov

Office 8050 Railroad Ave SE, Ste. C
Snoqualmie, WA 98065