

Workflow 2: Calculating “Linear” Quantities

1. *Select item or items that you want calculated using the D & C Manager item list.*

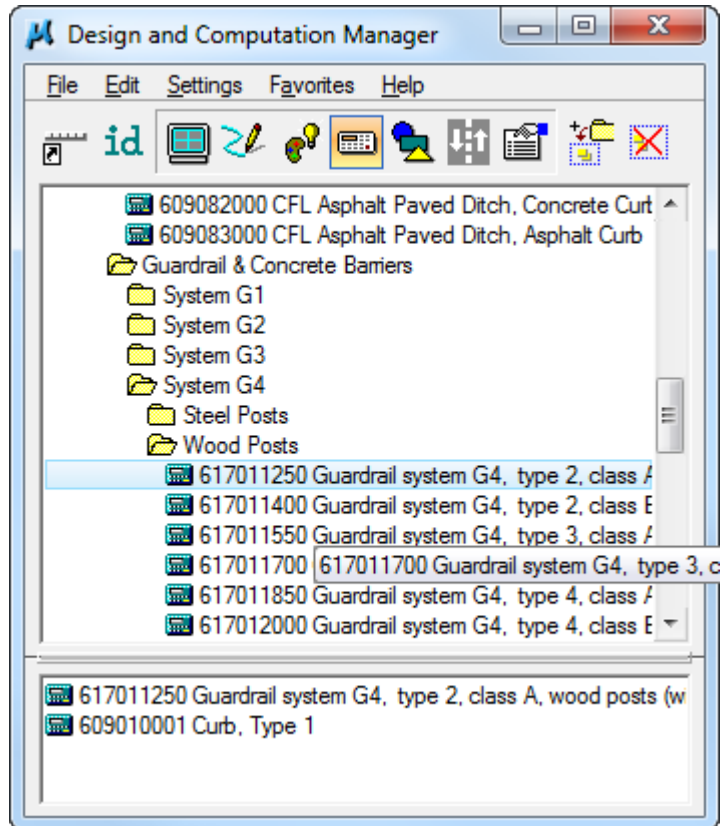


Figure 10.2-1: Multiple Item Selection

2. *Make sure the Job Number and Chain Name are correct. Set the Extents to View, Fence, or Active Design File. Select Compute Quantities.*

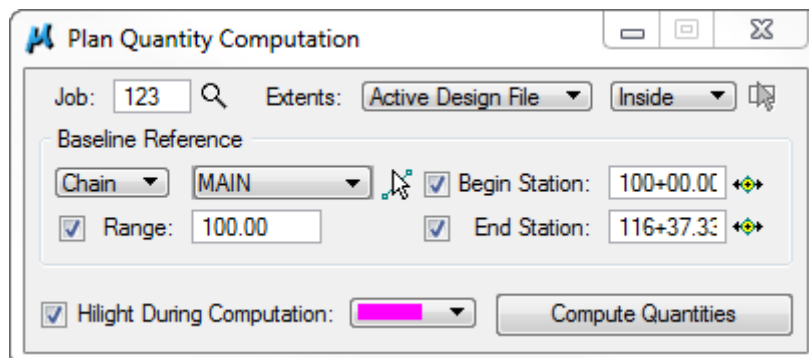


Figure 10.1-2: Compute Dialog

3. Set Export Format to Comp Book, add a file name, and select Export:

Item	Description	Quantity	Unit	Export
609010001	Curb, Type 1	200.00	LF	<input checked="" type="checkbox"/>
617011250	Guardrail system G4, type 2, class A, w...	300.00	LF	<input checked="" type="checkbox"/>

Export Format: **Comp Book** File Name: C:\sampleproject\Roadway\GEOPAK\linear.txt Create Export

Run: Phase: DesignEstimate Display

Figure 10.1-3: Computation Results

4. Set Export Format to Comp Book and add a file name. Select Export to get the following output file:

LINEAR MEASUREMENT COMPUTATION

Pay Item No. 609010001
Unit:LF File Name: C:\sampleproject\Roadway\GEOPAK\linear.txt

Pay Item Name: Curb, Type 1

Baseline	[B E G I N]		[E N D]		[O R I G I N A L]			[F I N A L]			Over/Under	Run	Remarks
	Station	Offset	Station	Offset	Gross Length	Deduct	Net Length	Gross Length	Deduct	Net Length			
MAIN	107+00.00	22.00	109+00.00	22.00	200.00	0.00	200.00						
Totals	Unit:LF				200.00	0.00	200.00						

Date: 8/31/2015 8:49:12 AM Page No. 2

LINEAR MEASUREMENT COMPUTATION

Pay Item No. 617011250
Unit:LF File Name: C:\sampleproject\Roadway\GEOPAK\linear.txt

Pay Item Name: Guardrail system G4, type 2, class A, wood posts (with block)

Baseline	[B E G I N]		[E N D]		[O R I G I N A L]			[F I N A L]			Over/Under	Run	Remarks
	Station	Offset	Station	Offset	Gross Length	Deduct	Net Length	Gross Length	Deduct	Net Length			
MAIN	113+00.00	14.00	116+00.00	14.00	300.00	0.00	300.00						
Page Totals	Unit:LF				300.00	0.00	300.00						
Totals	Unit:LF				300.00	0.00	300.00						

Figure 10.1-4: Output



Notice that in the example above, multiple quantities were calculated at once. You can add the items that you need calculated in the collection box by double clicking on it. If you want to remove an item from the collection box, simply double click on it in the collection box.