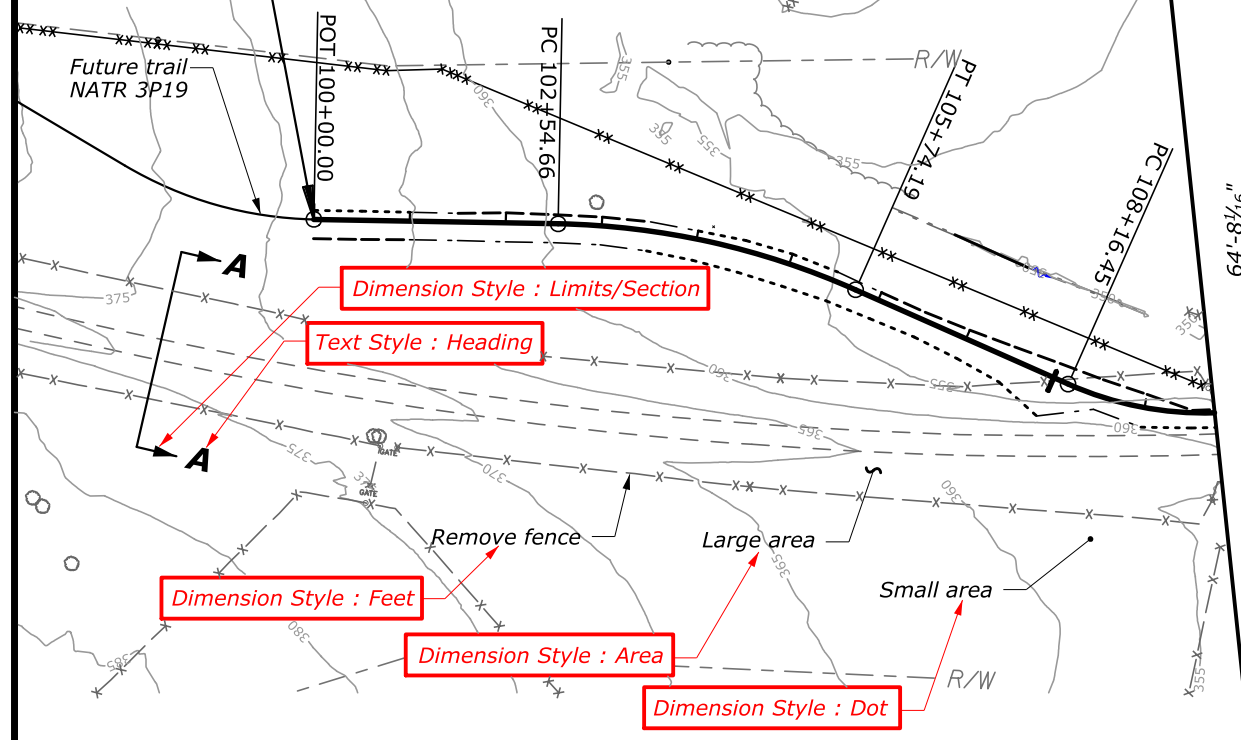


Dimension Style : Limits/Section
Text Style : Heading

BEGIN CONSTRUCTION

NATR 3P17, 18REL
100+00.00
N 1056763.7127
E 2328187.6254



Dimension Style : Limits/Section

Text Style : Heading

Dimension Style : Feet

Dimension Style : Area

Dimension Style : Dot

NOTE : This sheet is intended to show the text and dimension styles.

Dimension Style : Feet-Inch

Text Style : Sheet Index (Vert)
(if creating a new Index)

INDEX TO SHEETS

SHEET NO	DESCRIPTION
A1	Title Sheet
A2	Symbols And Abbreviations
A3	Location Map
A4-A13	Survey Information Sheets
B1-B5	Typical Sections
C1	Tabulation of Quantities
C2-C9	Summaries and Schedules
D1-D4	Key Maps
D5-D17	Plans and Profiles
K1-K9	Drainage Details
M1	Erosion Control Narrative
M2-M7	Erosion Control Plans
N1	Temporary Traffic Control Plan
R01-R34	Bridge Plans
S1-S42	Standards and Details
T1-T76	Refuge Auto Tour Route Cross Sections

NOTES :

- For periods noted in Table A, pavement may be unmarked if vehicle positioning guides and signing are provided per this Detail. For longer periods/higher ADT or for application of temporary markings with paint or tape, use Detail E635-2.
- On curves with radius less than 500', reduce cycle length to 20'.
- Use permanent markings plan to determine no passing zones for each direction of travel.
- Repeat R4-1 at 1 mile intervals.
- Repeat W8-12 after each major intersection and every 2 miles for temporary traffic control zones greater than 3 miles long.
- Use the "PASS WITH CARE" (R4-2) sign at the downstream end of a no-passing zone only if a "DO NOT PASS" (R4-1) sign has been installed at the upstream end of the zone.

Text Style : Notes

Text Style : Sheet Index (Vert)

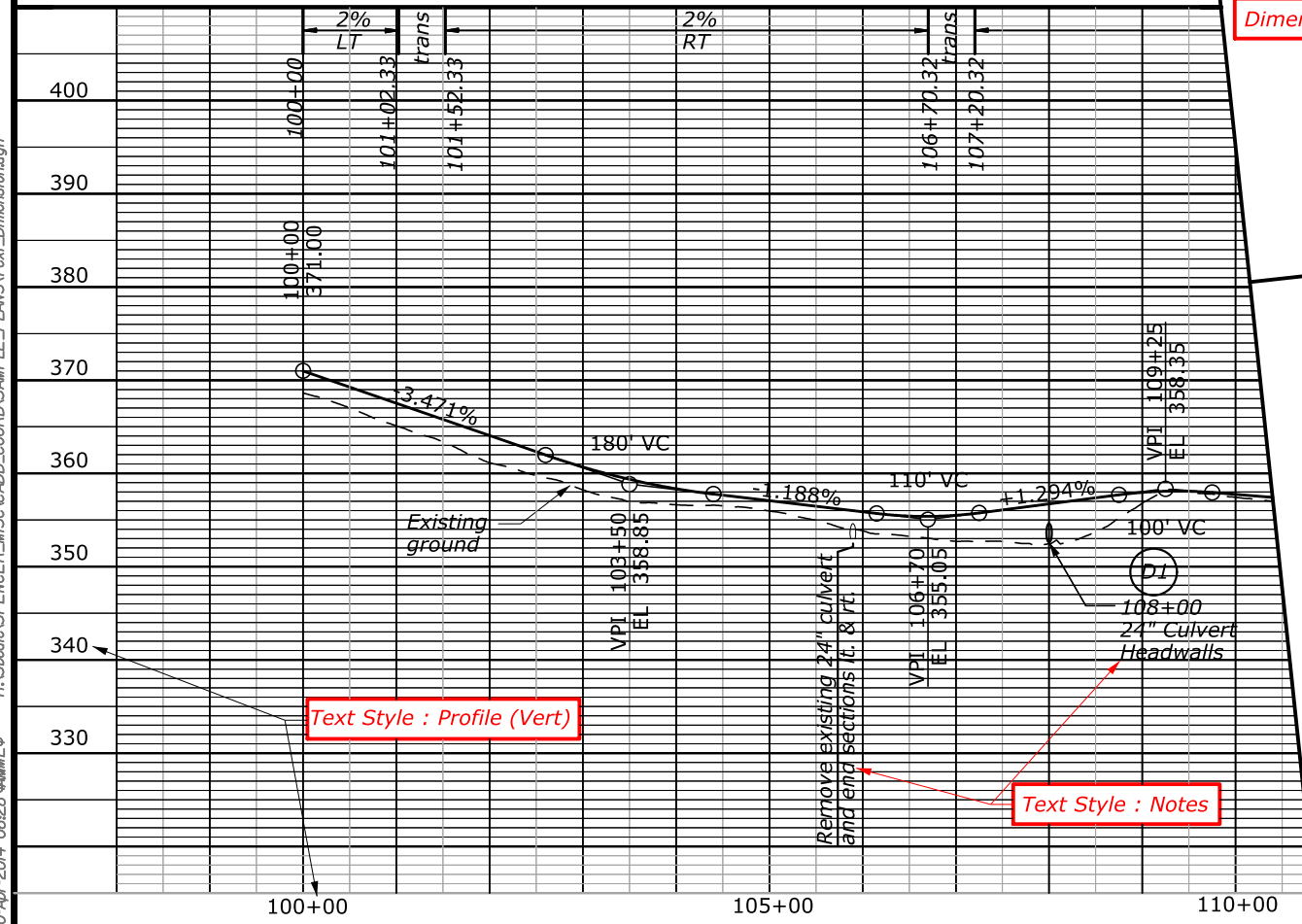
Text Style : SubTitle (Vert)

TABLE A

ADT	Maximum Duration Before Marking Are Required
≤ 1000	14 Days
> 1000	3 Days

Text Style : Sheet Index (Vert)

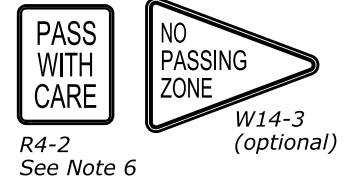
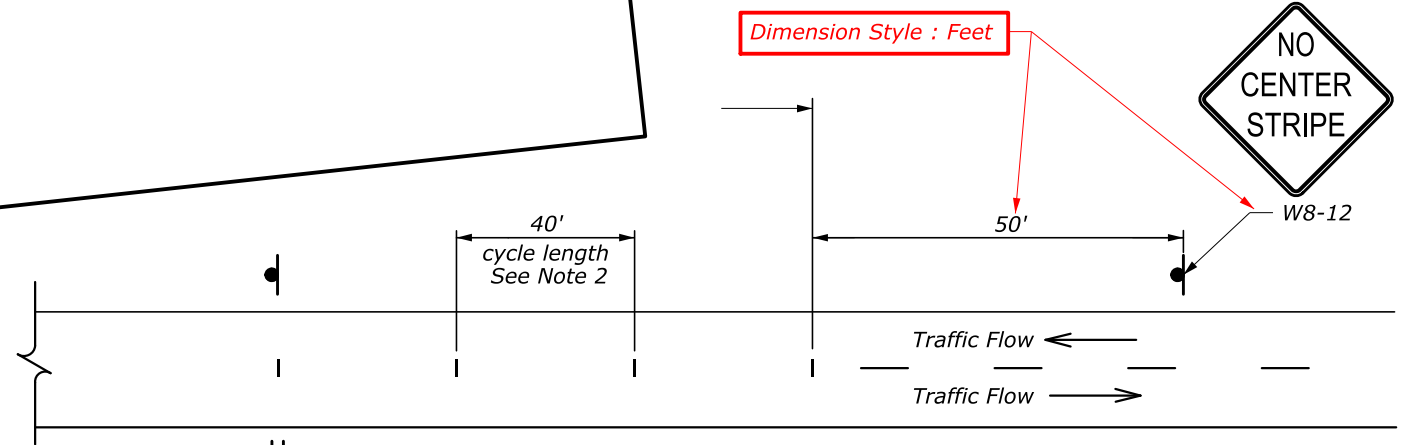
Dimension Style : Feet



Text Style : Profile (Vert)

Text Style : Notes

Dimension Style : Feet



Text Style : Sub Title (Vert)
for "Sheet 1 of 1" if applicable

Text Style : Heading

Text Style : Title (Vert)

DETAIL C
No Passing Zone both directions
Two-Way Traffic

Text Style : SubHeading

U.S. DEPARTMENT OF TRANSPORTATION
FEDERAL HIGHWAY ADMINISTRATION
EASTERN FEDERAL LANDS HIGHWAY DIVISION

U.S. CUSTOMARY DETAIL

DELINEATION AND SIGNING FOR UNMARKED PAVEMENTS

DETAIL APPROVED FOR USE
APPROVED : MAY 2011

DETAIL
E635-03