

Circle notes as appropriate.

NOTE:

1. Match existing superelevation and crown.
2. Existing superelevated and widened sections are not shown.
3. Reclaim to the depth specified in the typical section or the full-depth of the pavement, whichever is larger. Existing pavement depth varies from 3" to 8". See pavement report for more information on existing pavement conditions.
4. To avoid noticeable breaks in grade and to provide a smooth surface, transition between sections of surfacing at a rate of 0.5" in 15'. Refer to Pavement and/or Geotech reports as appropriate.
5. Place hot asphalt concrete pavement in two equal lifts. Place a tack coat prior to placing first lift, between lifts, and prior to placing friction course as directed by the CO.
6. Clear zone width varies on the outside of curves according to the AASHTO Roadside Design Guide.

Use text style 'English Italic, Standard Text' found in the CFLHD text style library cfl_english_text_styles.dgnlib. Refer to the CADD Manual Chapter 5 located on the CFL website for more information: http://www.cflhd.gov/resources/CADD/CaddManDocs/Chapter5_Annotation_x30.pdf

Show breakdown of project sections and total length. Do not include lengths for approach roads or parking areas.

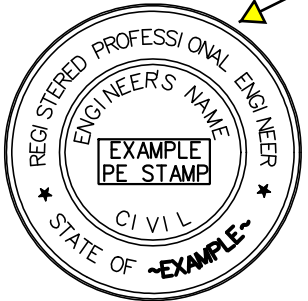
LENGTH OF PROJECT

Station to station	Description	Length (feet)	
		Schedule A	Schedule B
7+00 to 18+23	Northshore Rd.	2,523	2,523
18+23 to 18+73	Northshore Rd. (bridge)	No work	No work
18+73 to 170+00	Northshore Rd.	15,127	15,127
170+00 to 173+03	Box Car Wash Culvert Installation	No work	303
173+03 to 192+00	Northshore Rd.	1,897	1,897
332+85 to 418+60	Northshore Rd.	8,575	8,575
418+60 to 439+00	Northshore Rd.	No work	No work
500+00 to 652+67	Lake Mead Blvd.	15,600	15,600
TOTALS (feet)		43,722	43,722
TOTALS (miles)		8.2	8.2

Refer to the CFLHD policy on Sealing and Signing of A/E Documents (located on the CFL website: <http://www.cflhd.gov/resources/pm/documents/policies/sealing-signing-policy.pdf>)

U.S. DEPARTMENT OF TRANSPORTATION
FEDERAL HIGHWAY ADMINISTRATION
CENTRAL FEDERAL LANDS HIGHWAY DIVISION

TYPICAL SECTIONS
NORTHSHORE ROAD

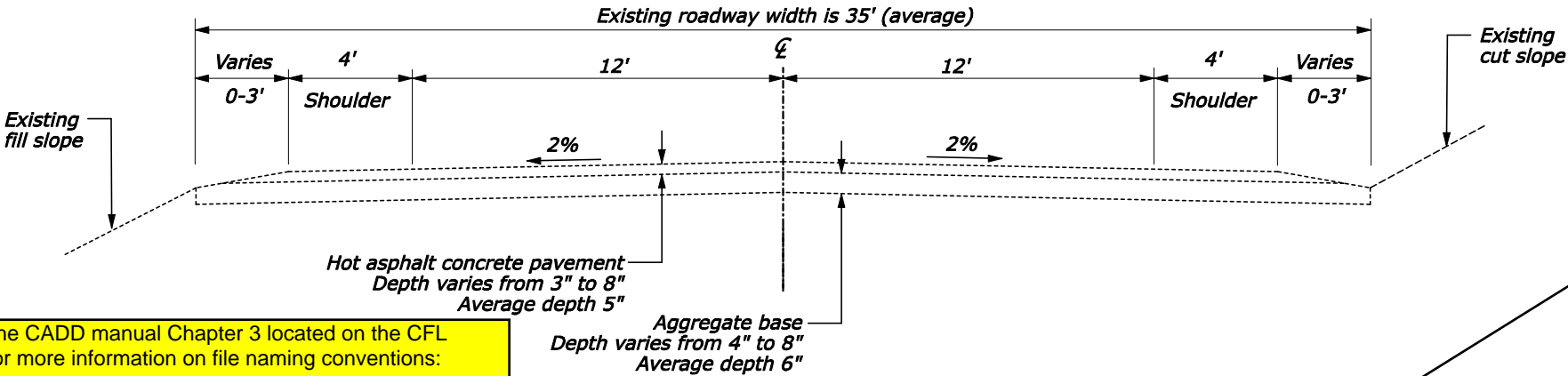


Show 'NO SCALE' if appropriate.

NO SCALE

Show the NPS PMIS number for NPS projects.

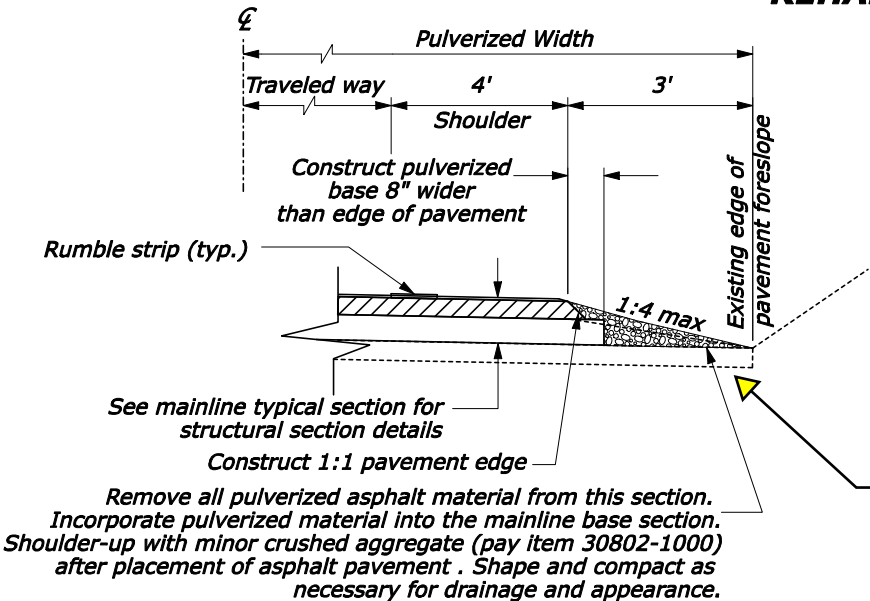
EXISTING TYPICAL SECTION
7+00 to 173+33 NORTHSHORE ROAD



Refer to the CADD manual Chapter 3 located on the CFL website for more information on file naming conventions: http://www.cflhd.gov/resources/CADD/CaddManDocs/Chapter3_NamingConventions_x30.pdf

CFL SAMPLE PLAN SHEET

TYPICAL SECTION
7+00 to 18+23 NORTHSHORE ROAD
18+23 to 173+33 NORTHSHORE ROAD
REHABILITATION



Remove all pulverized asphalt material from this section. Incorporate pulverized material into the mainline base section. Shoulder-up with minor crushed aggregate (pay item 30802-1000) after placement of asphalt pavement. Shape and compact as necessary for drainage and appearance.

DETAIL A

Show all structural section lifts, including number of pavement layers, prime, tack, fog, etc.

Show stations indicating application range of typical sections.

Use text style 'English Italic, Title Text' found in the CFLHD text style library cfl_english_text_styles.dgnlib. Title text is bold and uses all capital letters. Refer to the CADD Manual Chapter 5 located on the CFL website for more information: http://www.cflhd.gov/resources/CADD/CaddManDocs/Chapter5_Annotation_x30.pdf

Provide sufficient dimensions and information to construct the work.