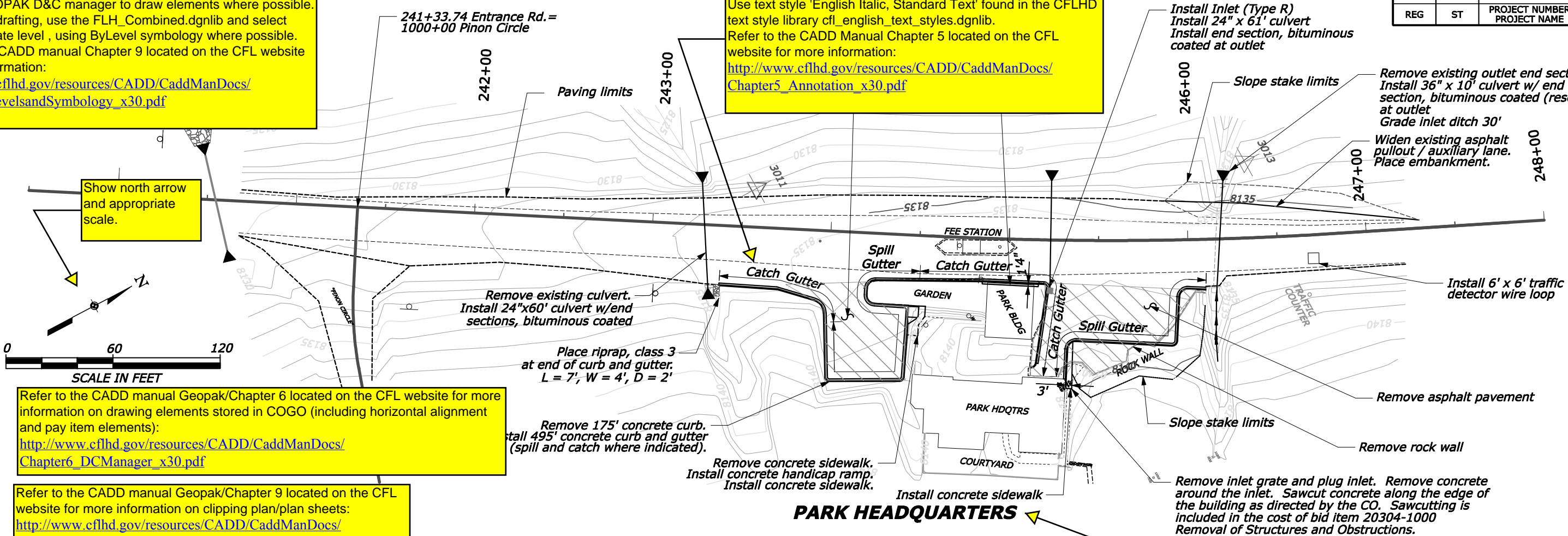


Make sure elements are placed with the proper symbology:
Use the GEOPAK D&C manager to draw elements where possible.
For manual drafting, use the FLH_Combined.dgnlib and select the appropriate level, using ByLevel symbology where possible.
Refer to the CADD manual Chapter 9 located on the CFL website for more information:
http://www.cflhd.gov/resources/CADD/CaddManDocs/Chapter9_LevelsandSymbology_x30.pdf

CFL SAMPLE PLAN SHEET

Use text style 'English Italic, Standard Text' found in the CFLHD text style library cfl_english_text_styles.dgnlib.
Refer to the CADD Manual Chapter 5 located on the CFL website for more information:
http://www.cflhd.gov/resources/CADD/CaddManDocs/Chapter5_Annotation_x30.pdf

REG	STATE	PROJECT	SHEET NO.	TOTAL SHEETS
REG	ST	PROJECT NUMBER PROJECT NAME	D3	D13



Refer to the CADD manual Geopak/Chapter 6 located on the CFL website for more information on drawing elements stored in COGO (including horizontal alignment and pay item elements):
http://www.cflhd.gov/resources/CADD/CaddManDocs/Chapter6_DCManager_x30.pdf

Refer to the CADD manual Geopak/Chapter 9 located on the CFL website for more information on clipping plan/sheet sheets:
http://www.cflhd.gov/resources/CADD/CaddManDocs/Chapter9_LevelsandSymbology_x30.pdf

Use text style 'English Italic, Title Text' found in the CFLHD text style library cfl_english_text_styles.dgnlib.
Refer to the CADD Manual Chapter 5 located on the CFL website for more information:
http://www.cflhd.gov/resources/CADD/CaddManDocs/Chapter5_Annotation_x30.pdf

