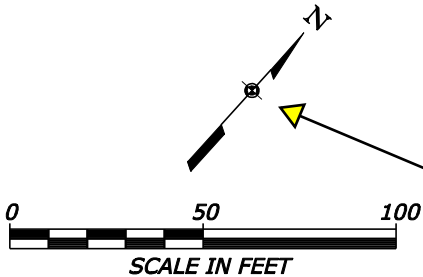


REG	STATE	PROJECT	SHEET NO.	TOTAL SHEETS
REG	ST	PROJECT NUMBER PROJECT NAME	E9	E12

CFL SAMPLE PLAN SHEET



Show north arrow and appropriate scale.

Show all temporary and permanent erosion control measures on the plan layout sheets.

This is an example of a commonly used CFL custom linestyle. For CFL designers, the custom linestyle resource files are automatically read by MicroStation (providing the machine is properly configured.) For consultants, CFLHD linestyle resource files are available through the V8\_Resource.zip download located on the CFL website:  
<http://www.cflhd.gov/resources/CADD/downloads.cfm>  
Refer to the CADD manual Chapter 6 for more information on linestyles:  
[http://www.cflhd.gov/resources/CADD/CaddManDocs/Chapter6\\_Linestyles\\_x30.pdf](http://www.cflhd.gov/resources/CADD/CaddManDocs/Chapter6_Linestyles_x30.pdf)

Cells for patterns are found in Drafting\_X30.cel. Refer to the CADD Manual Chapter 8 located on the CFL website for more information on cell libraries:  
[http://www.cflhd.gov/resources/CADD/CaddManDocs/Chapter8\\_CellLibraries\\_x30.pdf](http://www.cflhd.gov/resources/CADD/CaddManDocs/Chapter8_CellLibraries_x30.pdf)

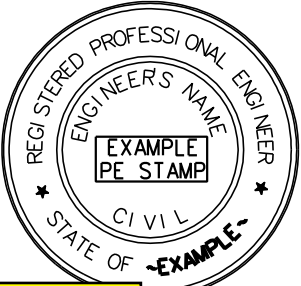
Cells for erosion control features are found in EC\_X30.cel. Refer to the CADD Manual Chapter 8 located on the CFL website for more information on cell libraries:  
[http://www.cflhd.gov/resources/CADD/CaddManDocs/Chapter8\\_CellLibraries\\_x30.pdf](http://www.cflhd.gov/resources/CADD/CaddManDocs/Chapter8_CellLibraries_x30.pdf)

Refer to the CFL policy on Sealing and Signing of A/E Documents (located on the CFL website):  
<http://www.cflhd.gov/resources/pm/documents/policies/sealing-signing-policy.pdf>

Refer to the CADD manual Chapter 3 located on the CFL website for more information on file naming conventions:  
[http://www.cflhd.gov/resources/CADD/CaddManDocs/Chapter3\\_NamingConventions\\_x30.pdf](http://www.cflhd.gov/resources/CADD/CaddManDocs/Chapter3_NamingConventions_x30.pdf)

Make sure elements are placed with the proper symbology: Use the GEOPAK D&C manager to draw elements where possible. For manual drafting, use the FLH\_Combined.dgnlib and select the appropriate level, using ByLevel symbology where possible. Refer to the CADD manual Chapter 9 located on the CFL website for more information:  
[http://www.cflhd.gov/resources/CADD/CaddManDocs/Chapter9\\_LevelsandSymbology\\_x30.pdf](http://www.cflhd.gov/resources/CADD/CaddManDocs/Chapter9_LevelsandSymbology_x30.pdf)

Show the NPS PMIS number for NPS projects.



U.S. DEPARTMENT OF TRANSPORTATION  
FEDERAL HIGHWAY ADMINISTRATION  
CENTRAL FEDERAL LANDS HIGHWAY DIVISION

**EROSION AND  
SEDIMENT CONTROL  
LAKE MEAD BLVD/  
NORTHSHORE RD  
INTERSECTION**

NPS PMIS NO.: 54621