

Notes to the Designer

Updated April 2023

Approach Road Typical Section Sheet

General Information

- All graphics and text will be in the design model. Only use the sheet model for printing.
- Approach Road Summary table is intergrated into the design model. Double click on the cell to edit.

Applicable SCRs

- Varies

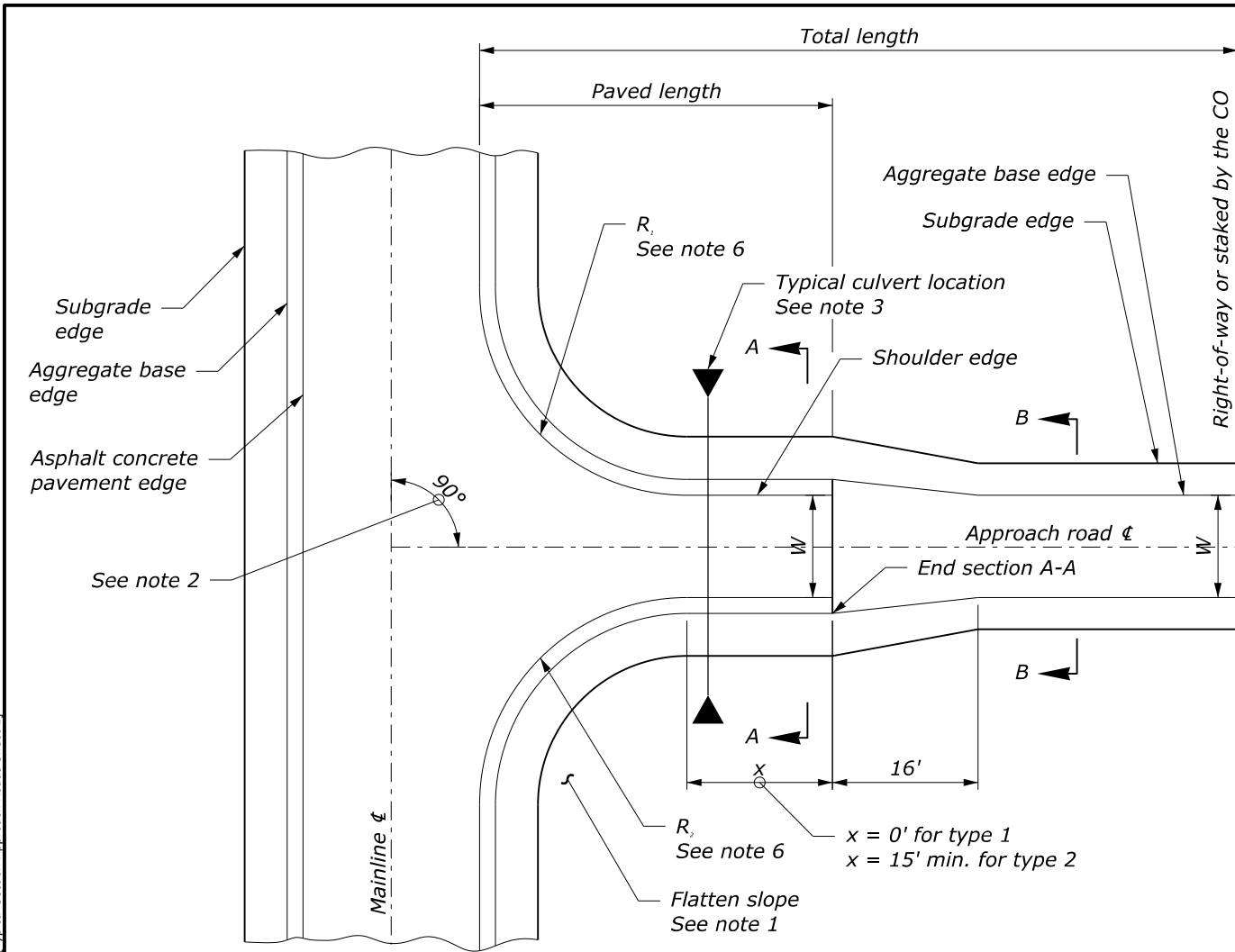
Typical Pay Item Used

- 15215-1000 Survey and staking, approach road

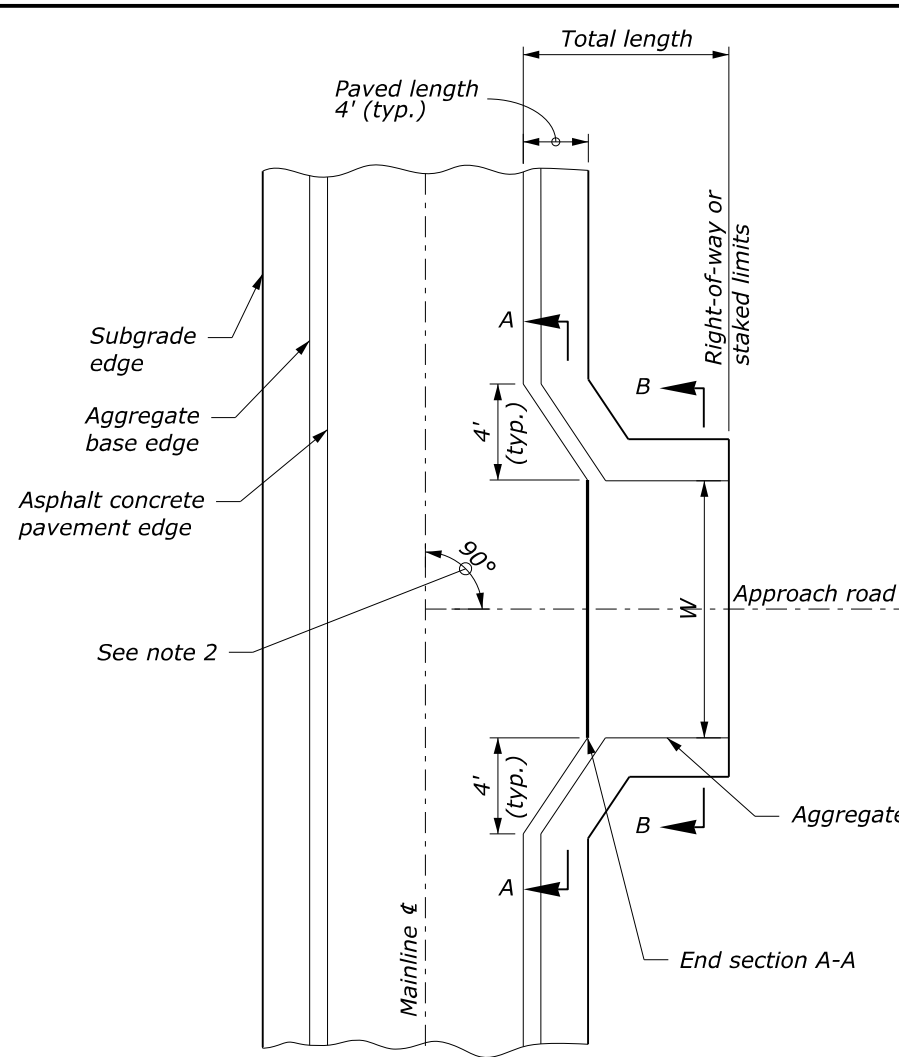
Updates

- **April 2021**
 - Updated for OpenRoads Designer
- **December 2022**
 - Updated Border
- **April 2023**
 - Updated border; updated to international seed file; added new sheet

k:\CADD_Coordinator\ORD Drawings\Templates - 10.10 version\Updated\Approach_Rd_typical.dgn [Typical Section Approach Roads Sheet 1]
25 October 2023 9:27 AM

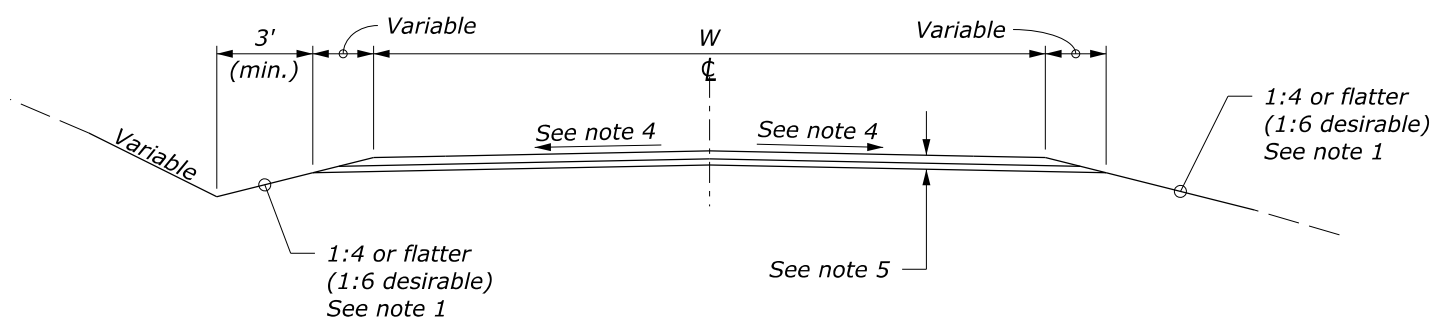


**APPROACH ROAD
TYPES 1 & 2
TYPICAL SECTION**

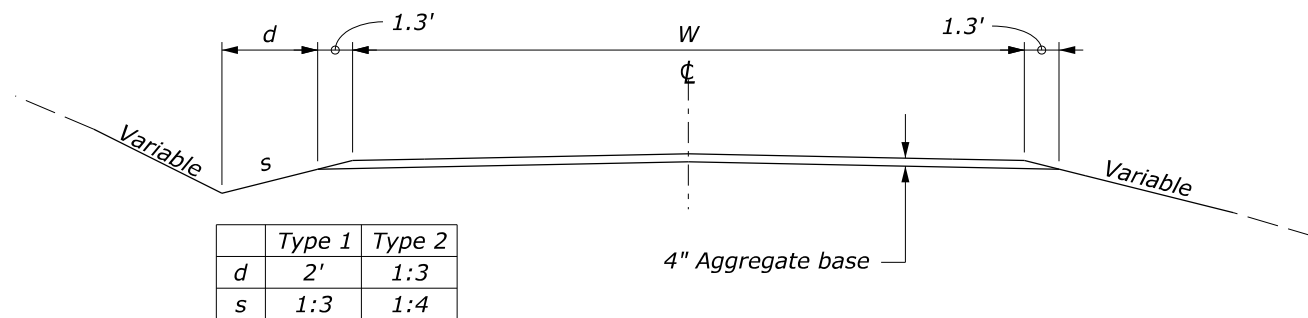


**APPROACH ROAD
TYPE 3
TYPICAL SECTION**

- Note:**
1. Construct cut and fill slopes for approach roads to match with mainline roadway construction.
 2. Under special conditions, the approach road and shown may be varied $\pm 20^\circ$.
 3. Place culverts at the end of the approach road radius to provide a flatter foreslope and increased mainline recovery area. When a culvert must be placed within the clear zone of the mainline roadway, use safety end sections (See standard drawing 602-9).
 4. Apply the normal mainline crown section to approach roads with widths greater than 15 feet.
 5. Refer to mainline typical sections for structural section thicknesses and foreslopes.
 6. Vary radii to fit unusual field conditions. Do not reduce existing radii or widths. R_1 is on the left side of the approach road centerline.



SECTION A-A



SECTION B-B

	Type 1	Type 2
d	2'	1:3
s	1:3	1:4

**TYPICAL SECTION
APPROACH ROADS**

No Scale

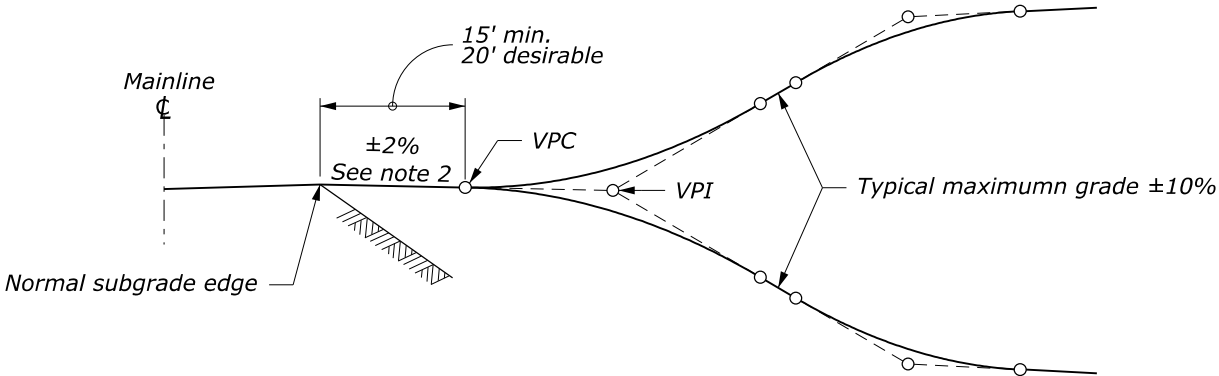
Sheet 1 of 2

K:\CADD_Coordinator\ORD Drawings\Templates - 10.10 version\Updated\Approach_Rd_Typcal.dgn [Typical Section Approach Roads Sheet 2]
25 October 2023 9:28 AM

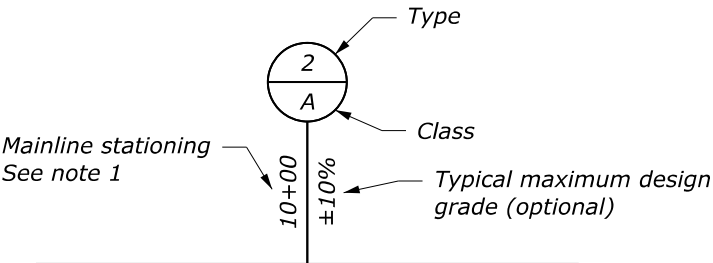
PROJECT	xxx	SHEET NUMBER	xxxx
PROJECT NUMBER		PROJECT NAME	Typical

Note:

1. Stations shown are approximate locations. Actual locations to be field verified.
2. Construct approach roads with landing areas having grades within ±2%. In snowy regions restrict this to a 0% to -2% grade. Under special conditions, use 6% maximum.



TYPICAL PROFILE



Example of symbol showing standard approach road connection on plan and profile sheet

TYPICAL SYMBOL

APPROACH ROAD SUMMARY							
STATION See note 1	TYPE & CLASS	PAVED LENGTH (ft)	TOTAL LENGTH (ft)	W (ft)	R _i (ft)	R _e (ft)	REMARKS
xx+xx Lt							
xx+xx Rt							

TYPE	CLASS	MIN. WIDTH W (ft)	MIN. RADIUS R (ft)	SAMPLE APPLICATION
1	A	12	15	Field Access
1	B	14	25	Minimum 1-Way Use
1	C	16	25	Farm Equipment
1	D	16	40	Logging Truck Use
2	A	18	25	Minimum 2-Way Use
2	B	20	25	ADT < 25
2	C	22	40	25 ≤ ADT ≤ 100
2	D	24	40	100 ≤ ADT ≤ 199
2	E	28	50	ADT ≥ 200
3	A	*	N/A	Paved apron

TYPICAL SECTION
APPROACH ROADS

No Scale