

Notes to the Designer

Updated October 2023

Wheelstop

General Information

- All graphics and text will be in the design and drawing models. Only use the sheet model for printing.
- **Wheelstop Options**
There are four different options for wheelstops available for use. Concrete and timber are shown on this template drawing. Adjust the template drawing to fit the project.

Applicable SCRs

- None

Typical Pay Item Used

- 60915-#### Wheelstop, concrete/timber/recycled plastic/rubber [EACH]

Updates

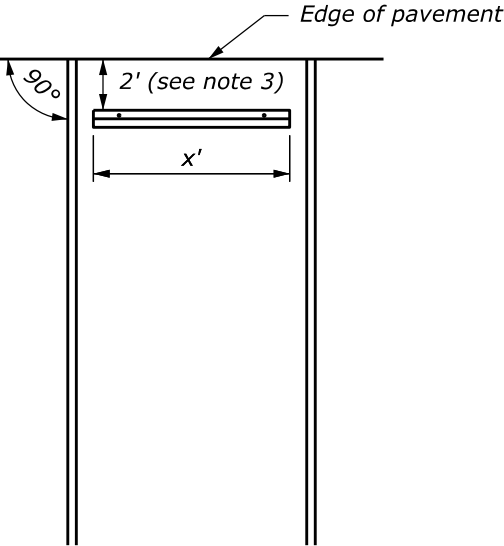
- **June 2021**
 - Updated for OpenRoads Designer
- **October 2023**
 - Updated border; updated to international foot seed

K:\CADD_Coordinator\ORD Drawings\Templates - 10.10 version\Updated\FP-14\SP609-B.dgn [SP 609-B] 26 October 2023 9:31 AM

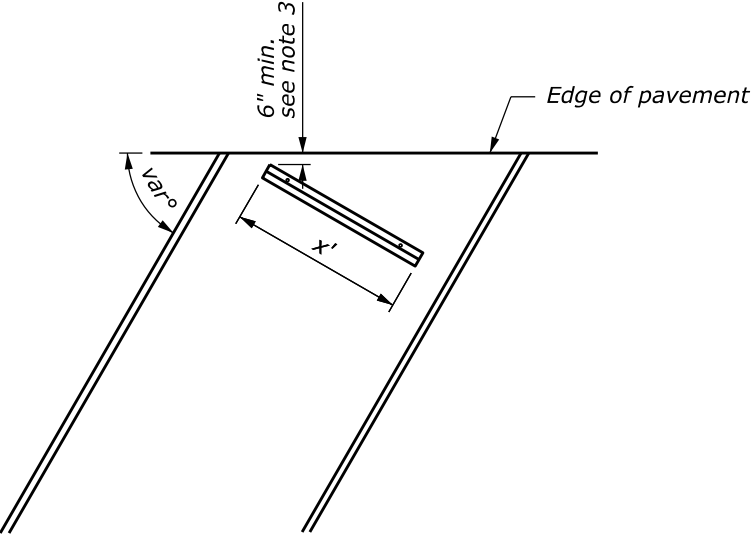
PROJECT	XXX	SHEET	XXXX
PROJECT NUMBER		NUMBER	
PROJECT NAME			

NOTE:

- 1. Center wheelstops between and perpendicular to stall lines.
- 2. Variations in wheelstops will be allowed with the approval of the CO to meet manufacturer's standards.
- 3. Increase distance for walls and other obstructions.



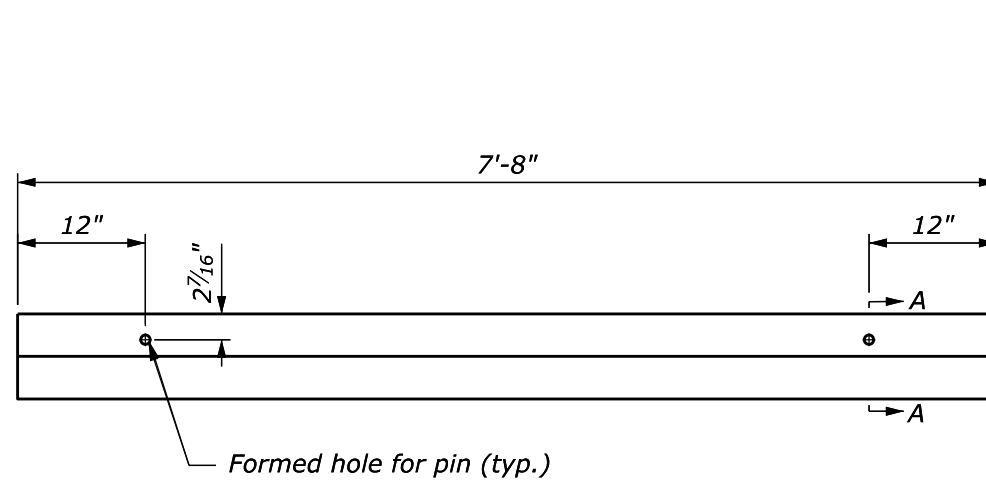
HEAD-ON PARKING
WHEELSTOP PLACEMENT



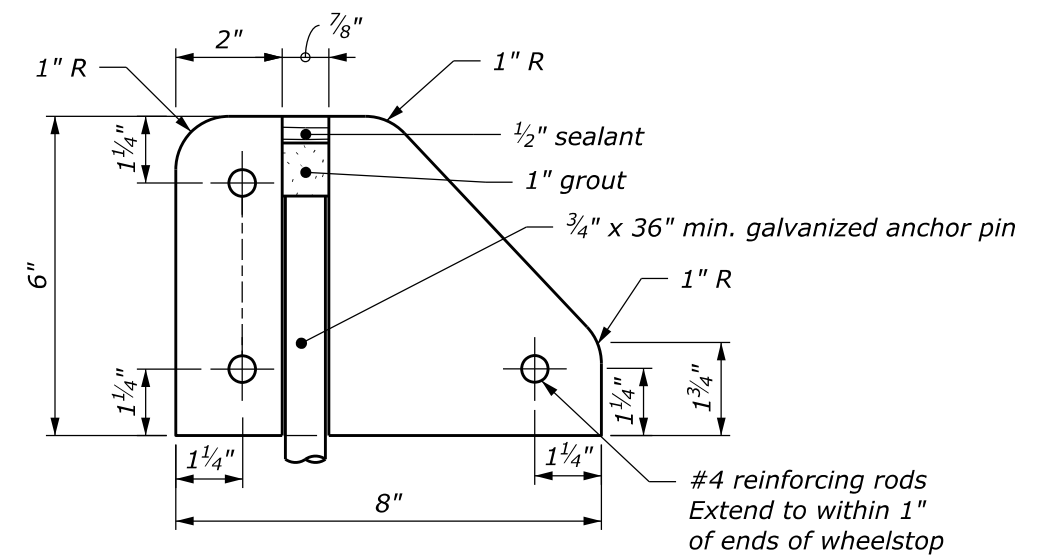
ANGULAR PARKING
WHEELSTOP PLACEMENT

U.S. DEPARTMENT OF TRANSPORTATION FEDERAL HIGHWAY ADMINISTRATION OFFICE OF FEDERAL LANDS HIGHWAY	
CFLHD SPECIAL	
WHEELSTOP DETAILS	
	SPECIAL
	609-B

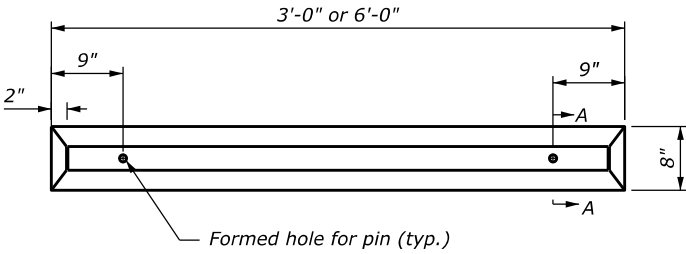
NO SCALE



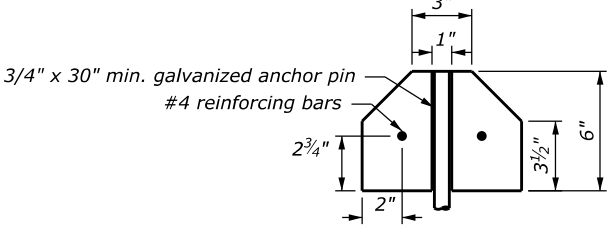
CONCRETE WHEELSTOP



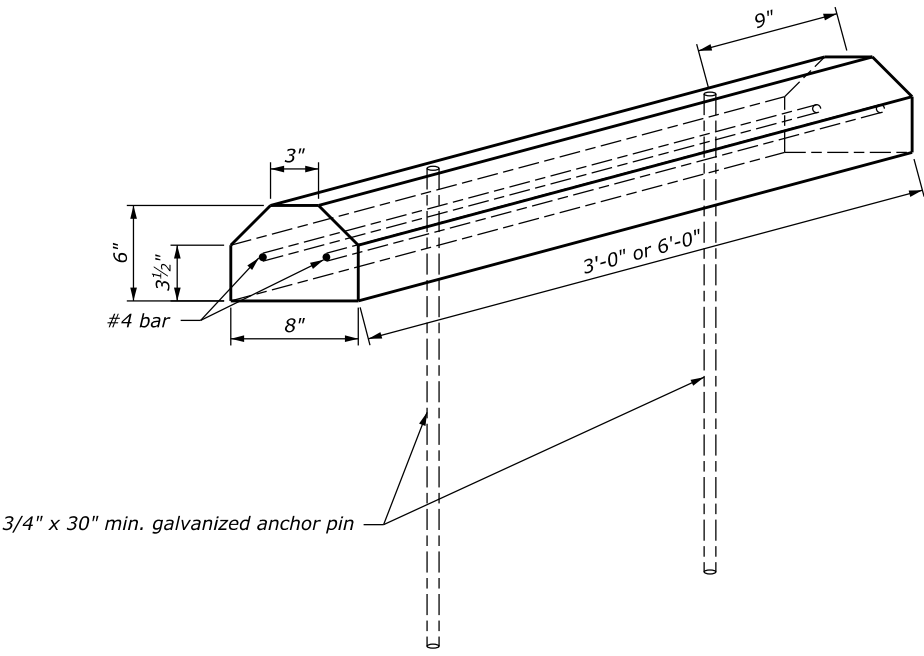
SECTION A-A

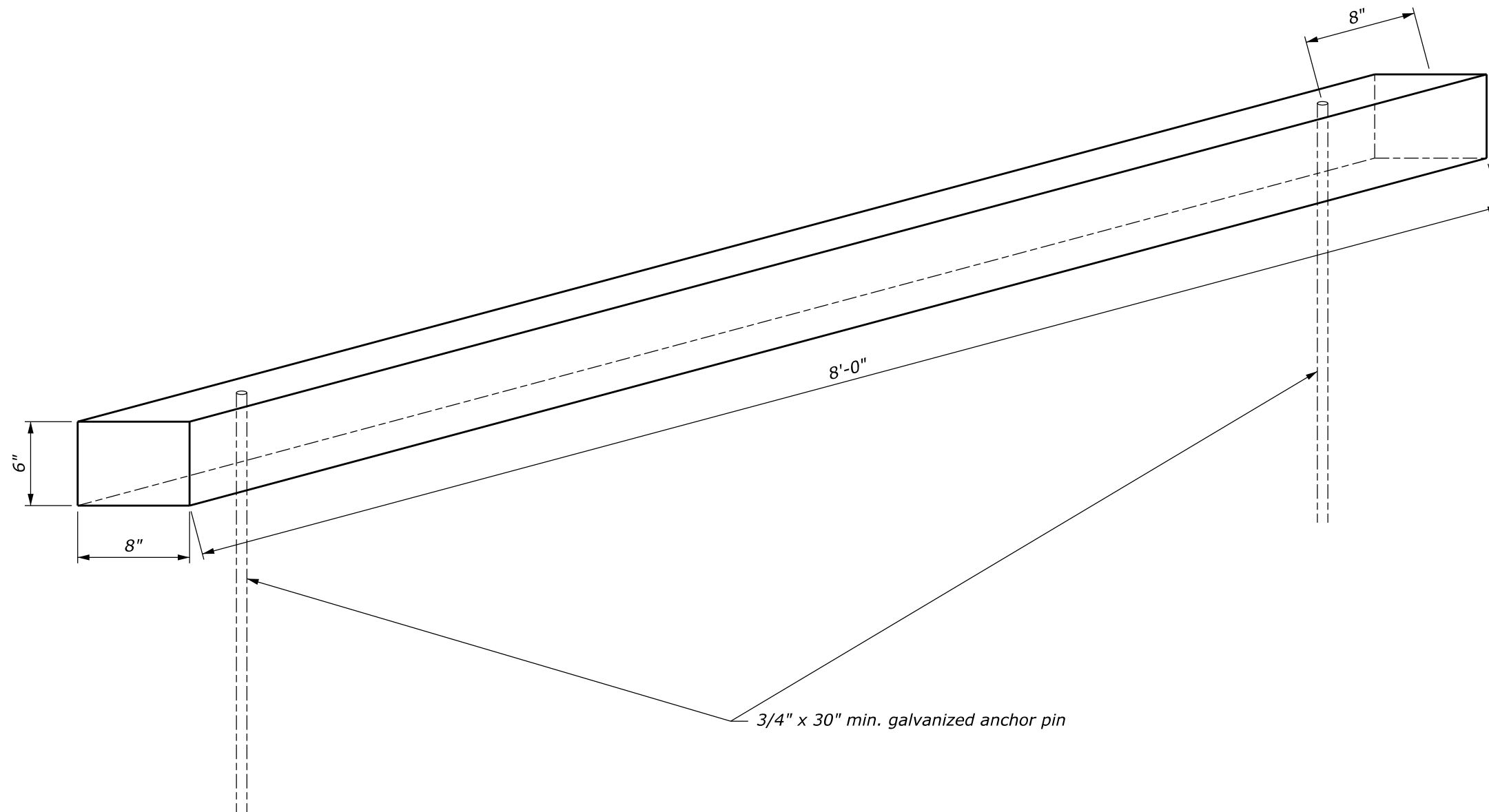


CONCRETE WHEELSTOP



SECTION A-A





TIMBER WHEELSTOP