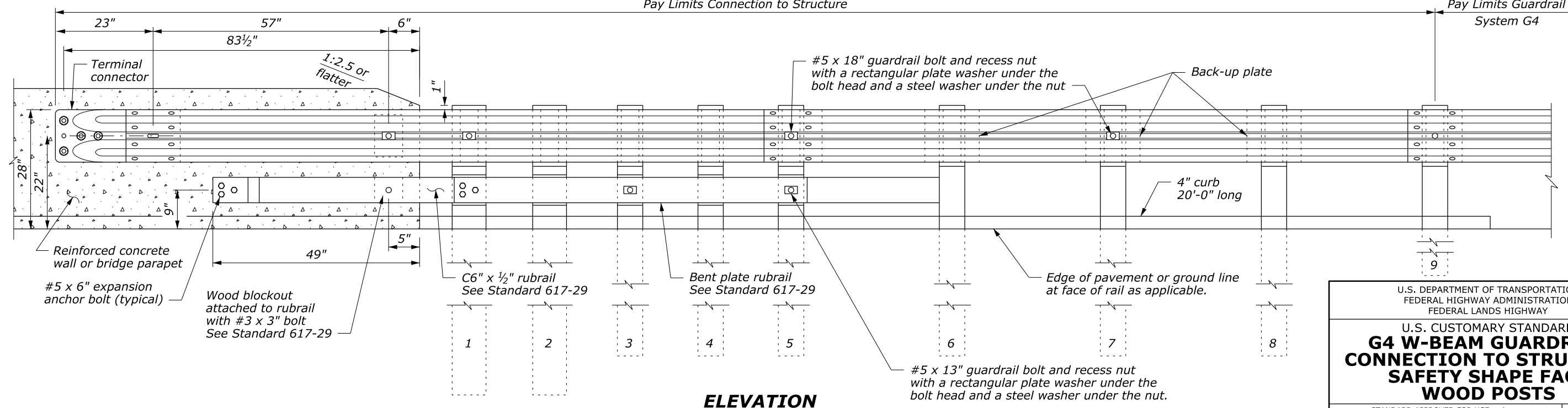
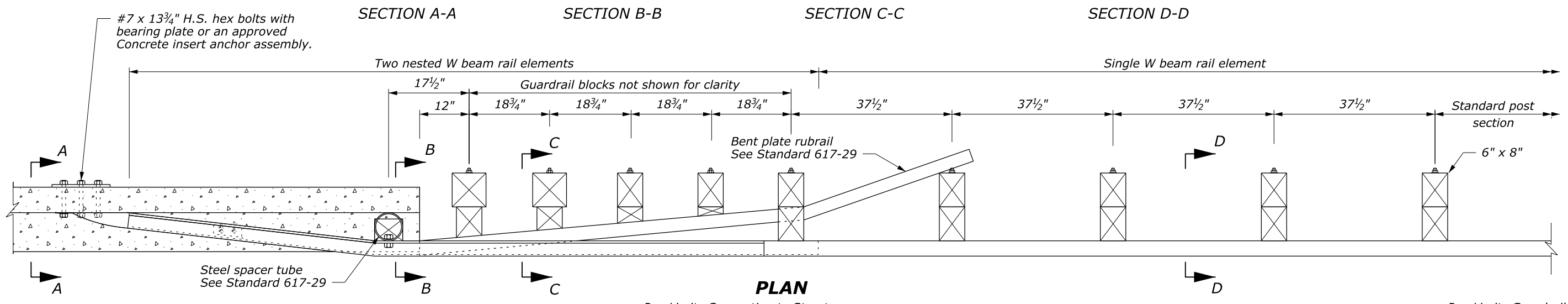


- NOTE:**
1. Posts 1 through 5 require an additional hole to attach lower wood blocks and/or rubrail.
  2. Center drill wood blocks for rubrail located on posts 1 through 4. Secure blocks to posts 2 and 4. Secure rubrail and blocks to posts 1, 3, and 5 using  $\frac{5}{8}$ " carriage bolts.
  3. Do not bolt W beam to posts and blocks at posts 2 and 4.
  4. Reinforced concrete wall or bridge parapet must be capable of developing a 59.6 kip pull out strength.



U.S. DEPARTMENT OF TRANSPORTATION  
 FEDERAL HIGHWAY ADMINISTRATION  
 FEDERAL LANDS HIGHWAY

U.S. CUSTOMARY STANDARD  
**G4 W-BEAM GUARDRAIL  
 CONNECTION TO STRUCTURE  
 SAFETY SHAPE FACE  
 WOOD POSTS**

STANDARD APPROVED FOR USE --/--

REVISOR: 9/2013  
 DRAFT: 9/2013

STANDARD  
 617-27

NO SCALE

30 September 2013 10:45 AM c:\myfiles\pw\_production\dms67487\Standard\_617-27-DRAFT.dgn [USC]