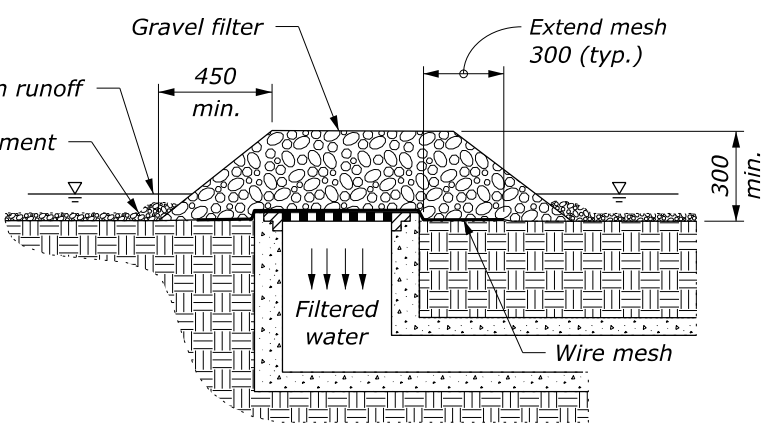
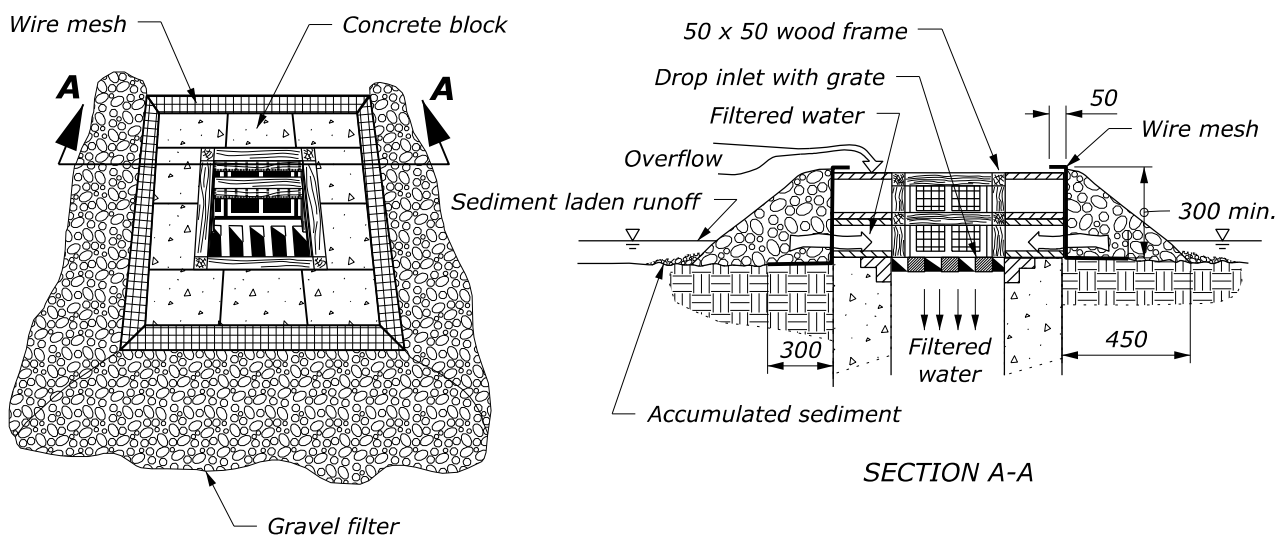


SILT FENCE DROP INLET PROTECTION (TYPE A)

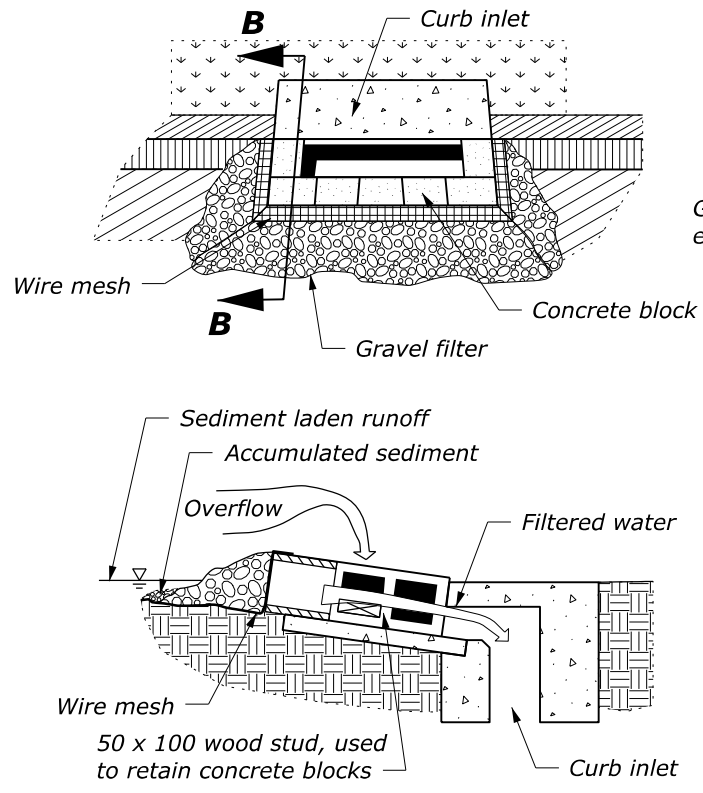


GRAVEL AND WIRE MESH DROP INLET PROTECTION (TYPE B)

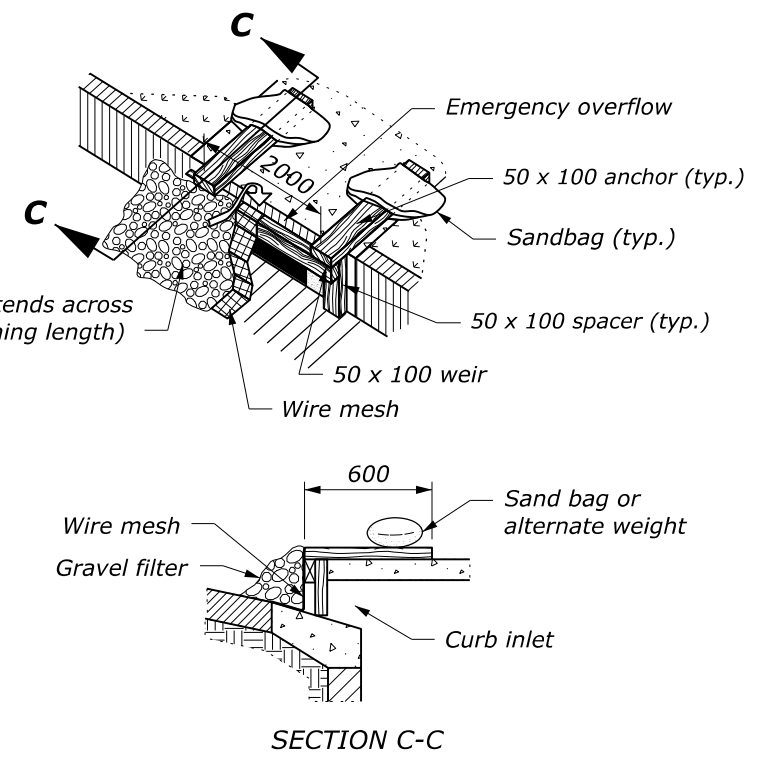
- NOTE:**
1. For gravel filters use 50 to 75 mm diameter coarse aggregate.
 2. Use wire mesh with 12 x 12 mm openings.
 3. Use type A inlet protection in sump locations only.
 4. Use type B inlet protection only in sump locations where heavy concentrated flows are not expected. Do not use where ponding around the structure might cause inconvenience or damage.
 5. Dimensions without units are millimeters.



BLOCK AND GRAVEL DROP INLET PROTECTION (TYPE C)



SECTION B-B
CURB INLET PROTECTION, BLOCK AND GRAVEL (TYPE D)



SECTION C-C
CURB INLET PROTECTION, WOODEN WEIR (TYPE E)

U.S. DEPARTMENT OF TRANSPORTATION FEDERAL HIGHWAY ADMINISTRATION OFFICE OF FEDERAL LANDS HIGHWAY	
METRIC FLH STANDARD	
TEMPORARY INLET PROTECTION	
STANDARD APPROVED FOR USE 3/1996 REVISED: 6/2005 7/2022	STANDARD M157-2

NO SCALE