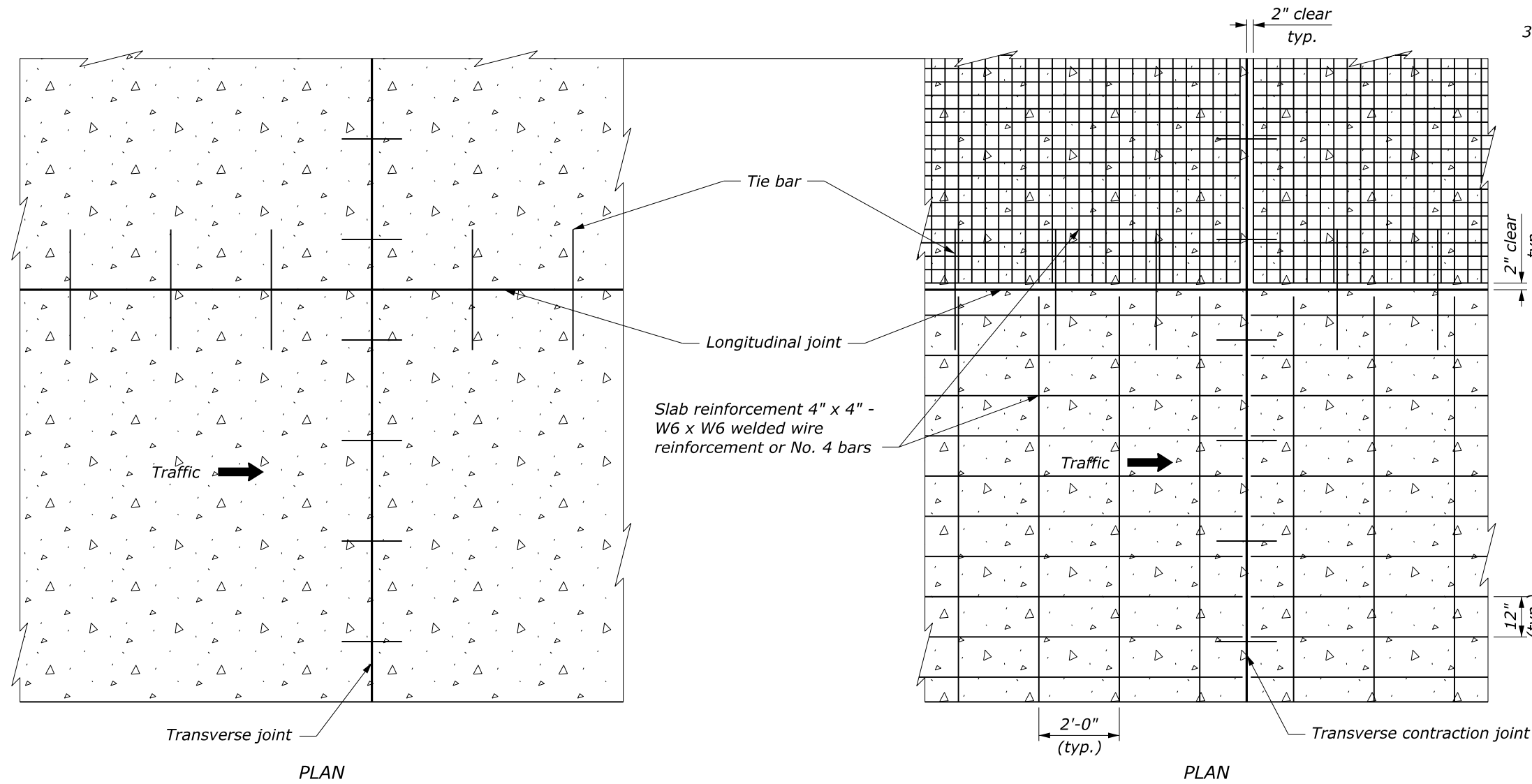
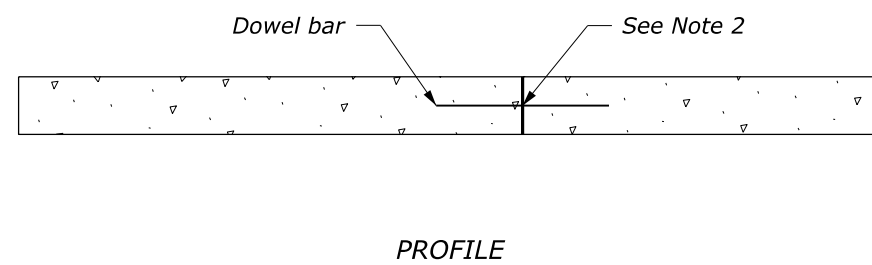


**NOTE:**

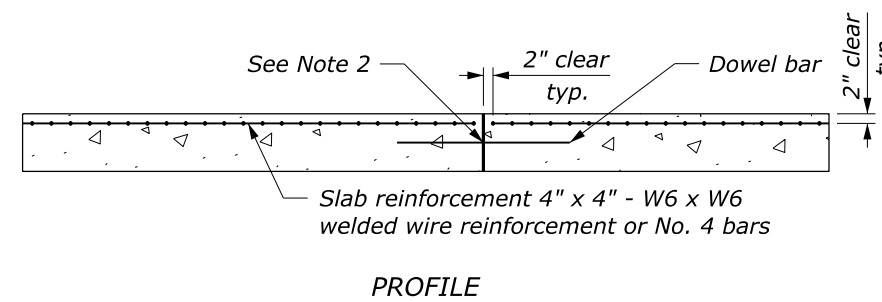
1. Provide the same type of dowel assemblies and tie bars for joints in plain portland cement concrete pavement as shown for joints in reinforced pavement.
2. See Standard 501-2 for joint and joint sealing details.
3. Lap longitudinal and transverse reinforcement not less than 15 inches.



PAVEMENT THICKNESS (in)	TRANSVERSE JOINT SPACING (ft)
$T < 6$	10
$6 \leq T < 12$	15



**PROFILE**  
**PLAIN MINOR CONCRETE PAVEMENT**



**PROFILE**  
**REINFORCED MINOR CONCRETE PAVEMENT**

NO SCALE

U.S. DEPARTMENT OF TRANSPORTATION  
FEDERAL HIGHWAY ADMINISTRATION  
OFFICE OF FEDERAL LANDS HIGHWAY

FLH STANDARD

**MINOR CONCRETE PAVEMENT**

STANDARD APPROVED FOR USE --/----  
REVISED: 9/2016

STANDARD  
501-1