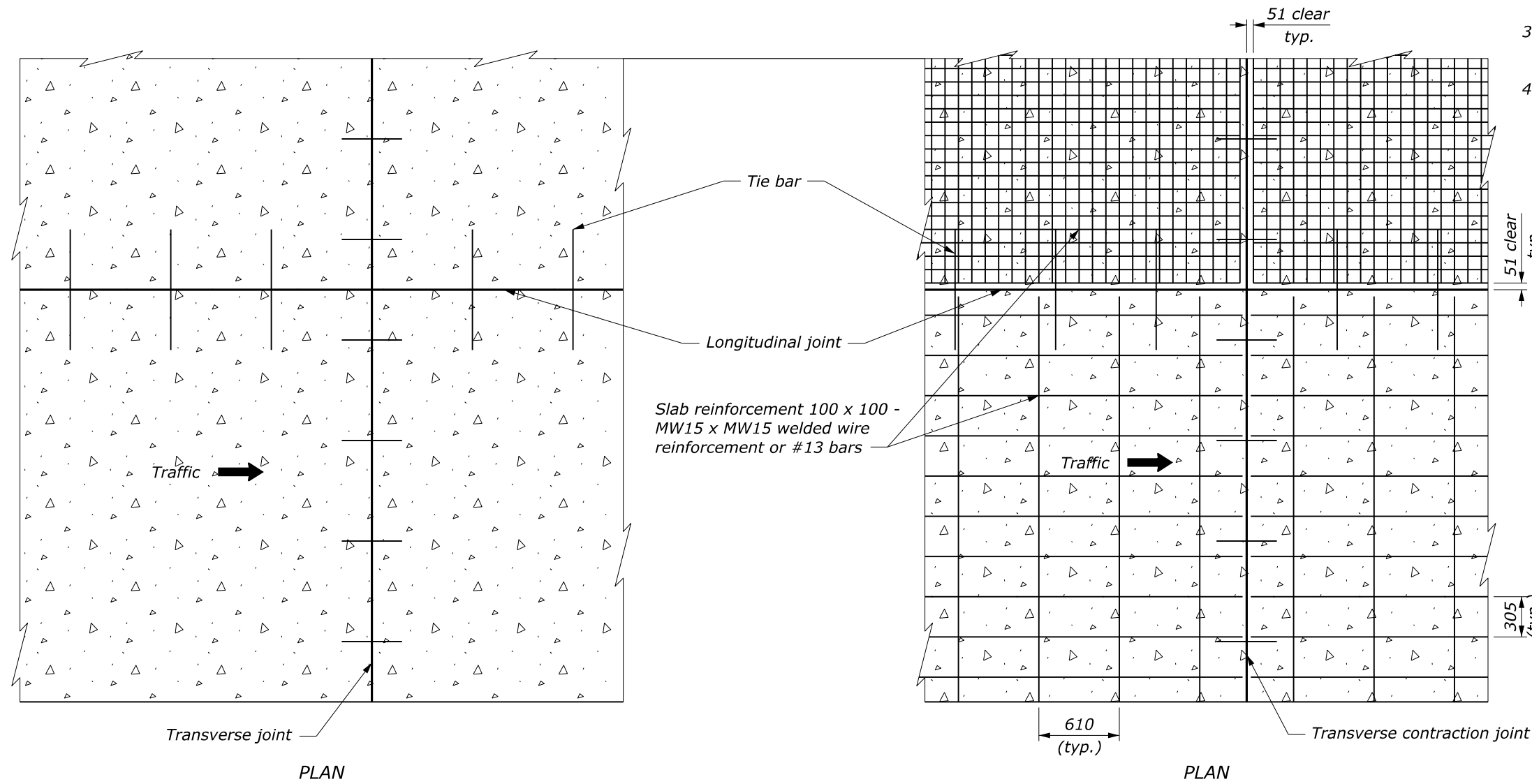
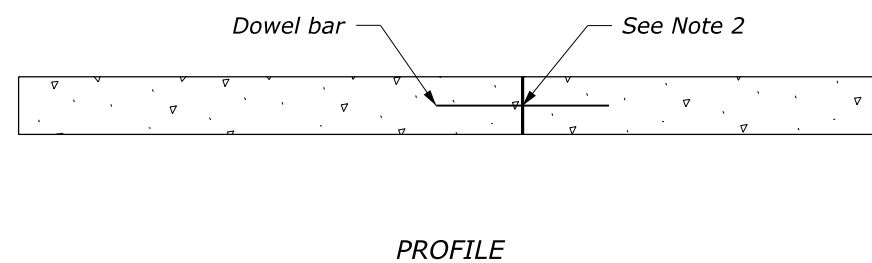


**NOTE:**

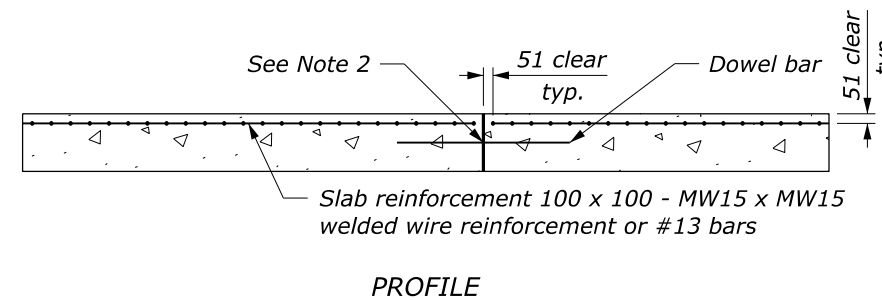
1. Provide the same type of dowel assemblies and tie bars for joints in plain portland cement concrete pavement as shown for joints in reinforced pavement.
2. See Standard M501-2 for joint and joint sealing details.
3. Lap longitudinal and transverse reinforcement not less than 380 mm.
4. Dimensions without units are millimeters.



PAVEMENT THICKNESS (mm)	TRANSVERSE JOINT SPACING (m)
$T < 150$	3
$150 \leq T < 300$	4.5



**PLAIN MINOR CONCRETE PAVEMENT**



**REINFORCED MINOR CONCRETE PAVEMENT**

NO SCALE

U.S. DEPARTMENT OF TRANSPORTATION  
 FEDERAL HIGHWAY ADMINISTRATION  
 OFFICE OF FEDERAL LANDS HIGHWAY  
 METRIC FLH STANDARD

**MINOR CONCRETE PAVEMENT**

STANDARD APPROVED FOR USE 3/1996  
 REVISED: 6/1997  
 DRAFT: 9/2016

STANDARD M501-1