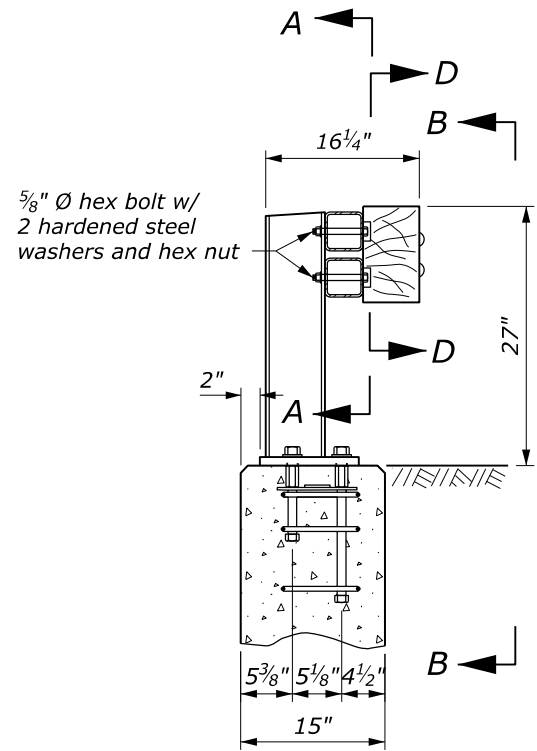


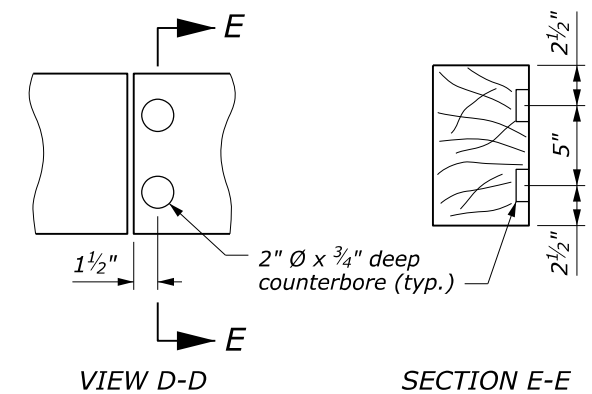
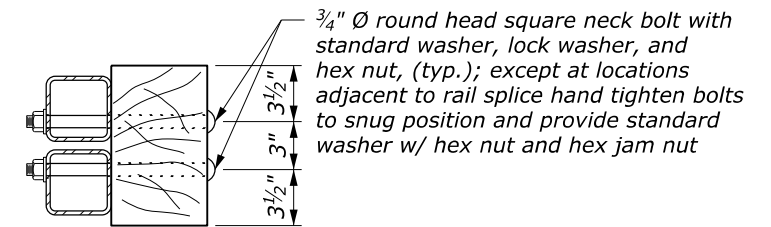
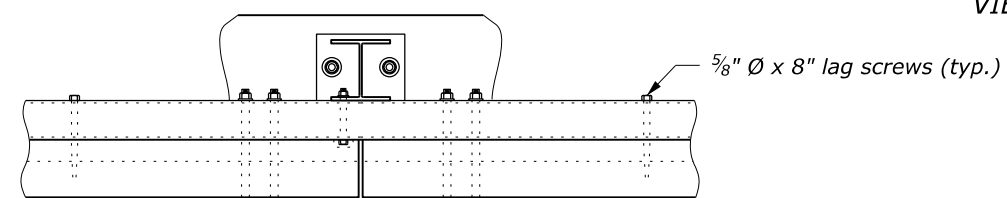
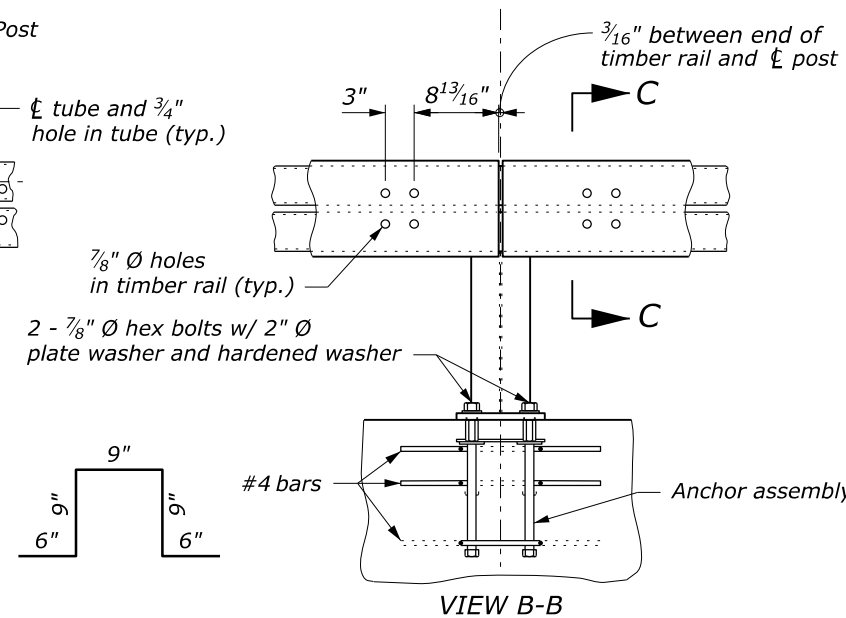
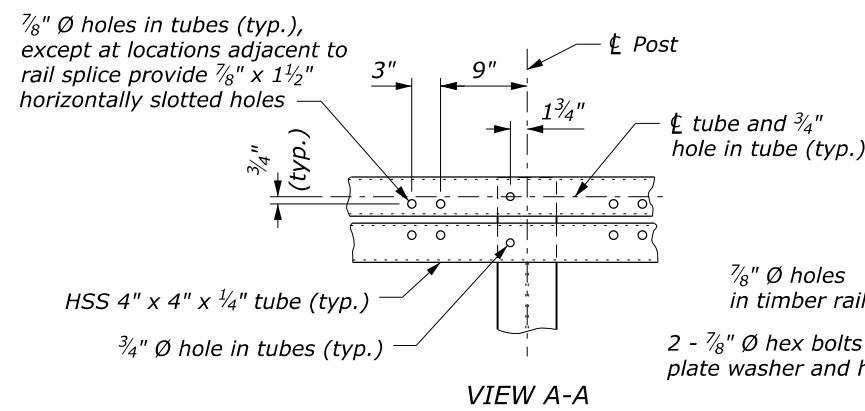
**NOTE:**

1. Furnish steel for rail posts, base plates, shims, splice sleeves, and anchor assembly plates conforming to ASTM A36. Furnish structural tubing for rails conforming to ASTM A500, Grade B. Paint all metal components of the bridge rail except post base shims, anchor assemblies, and rail splice sleeves. Galvanize post base shims, anchor assemblies, and rail splice sleeves. Furnish hex bolts conforming to ASTM A325. Furnish hex coupling nuts with a center stop conforming to ASTM A563, Grade C, D, or DH. For all other fasteners conform to ASTM A307.
2. Submit fabrication drawings according to Section 555 and show rail section lengths, splice locations, rail post spacing, and fastener lengths. Fabricate steel according to Section 555 before galvanizing or painting. Weld according to Section 555.
3. Connect each HSS 4" x 4" x 1/4" tube to at least three posts between splices.
4. Erect the rail parallel to grade.

**BRIDGE RAIL ELEVATION**

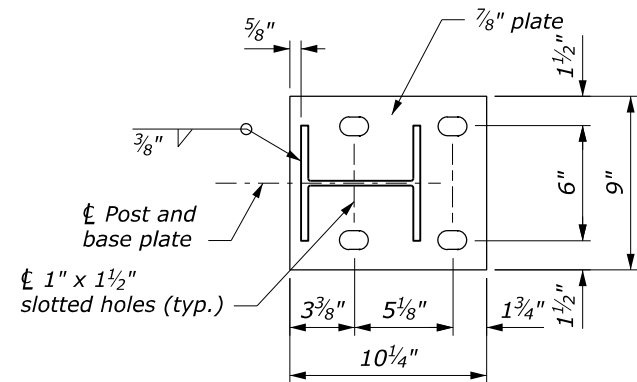


TYPICAL SECTION @ POST

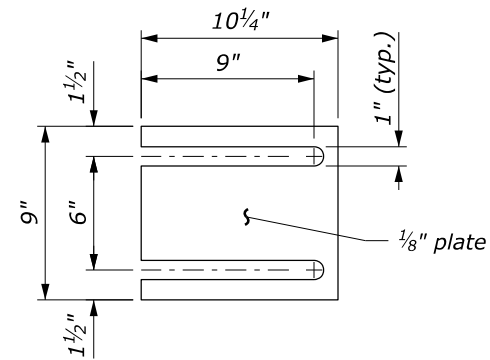


NO SCALE

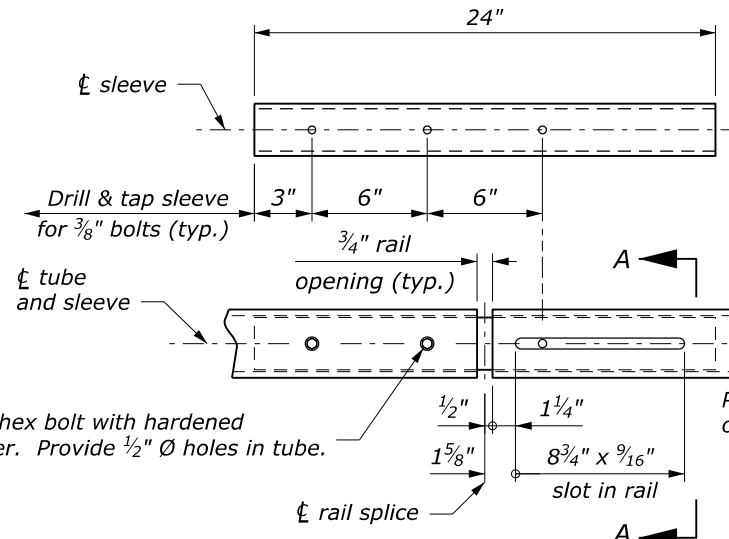
U.S. DEPARTMENT OF TRANSPORTATION FEDERAL HIGHWAY ADMINISTRATION OFFICE OF FEDERAL LANDS HIGHWAY	
FLH STANDARD <b>TUBULAR STEEL-BACKED TIMBER BRIDGE RAIL</b> Sheet 1 of 2	
STANDARD APPROVED FOR USE --/----	STANDARD
REVISED: 8/2016	556-1



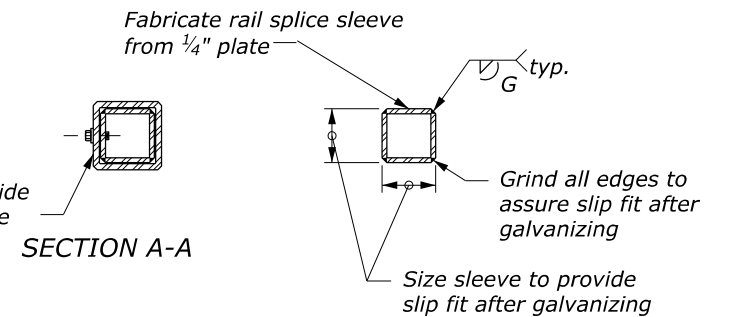
**BASE PLATE DETAIL**



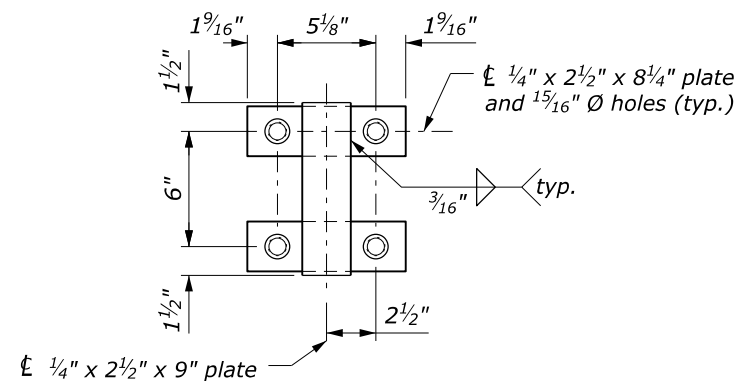
**RAIL POST BASE SHIM**



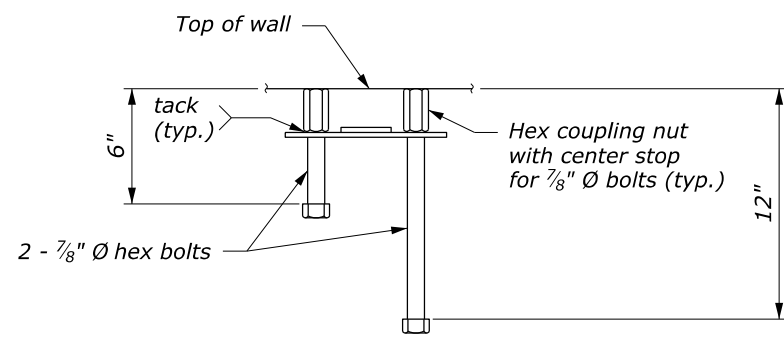
**RAIL SPLICE DETAIL**



**SLEEVE**

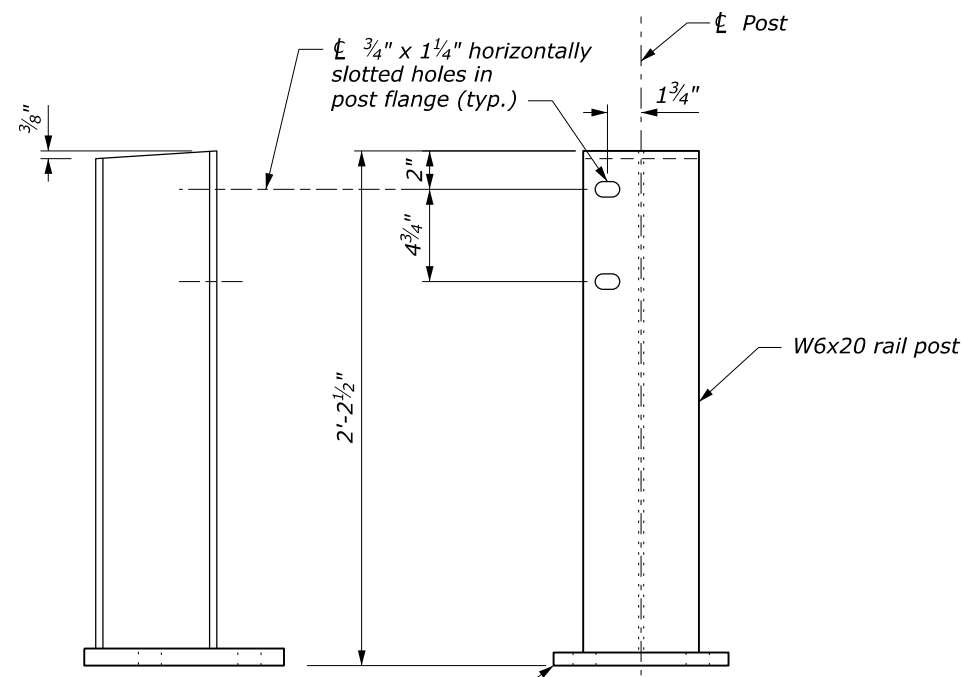


**PLAN**



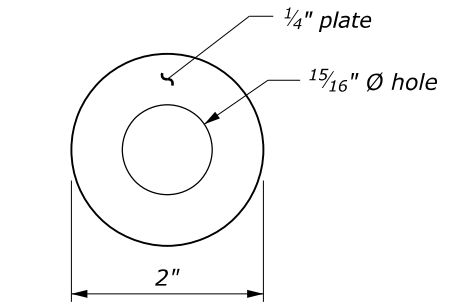
**ELEVATION**

**ANCHOR ASSEMBLY**



See Base Plate Detail

**POST ASSEMBLY**



**PLATE WASHER**

NO SCALE

U.S. DEPARTMENT OF TRANSPORTATION FEDERAL HIGHWAY ADMINISTRATION OFFICE OF FEDERAL LANDS HIGHWAY	
FLH STANDARD <b>TUBULAR STEEL-BACKED TIMBER BRIDGE RAIL</b> Sheet 2 of 2	
STANDARD APPROVED FOR USE --/----	STANDARD
REVISED: 8/2016	556-1