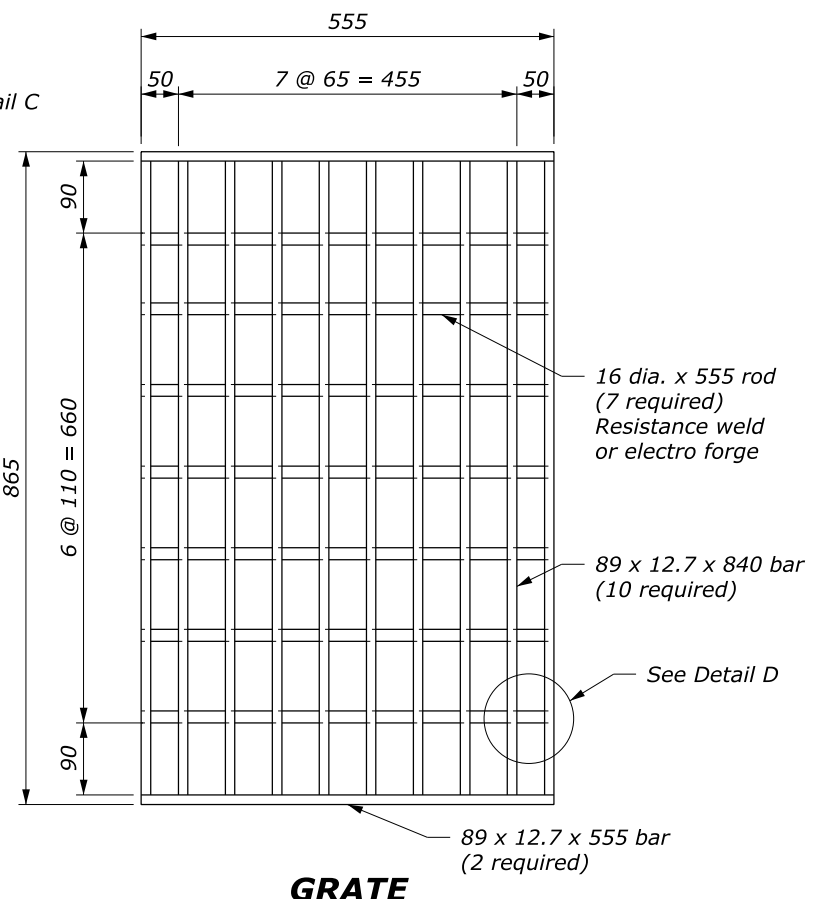


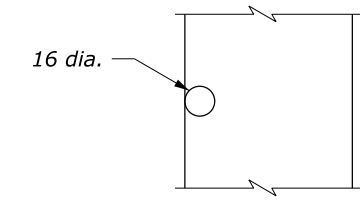
GRATE FRAME



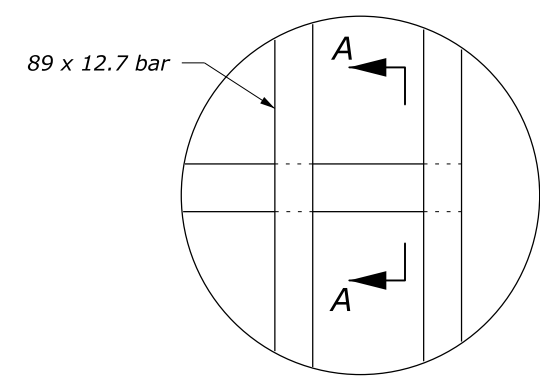
GRATE

NOTE:

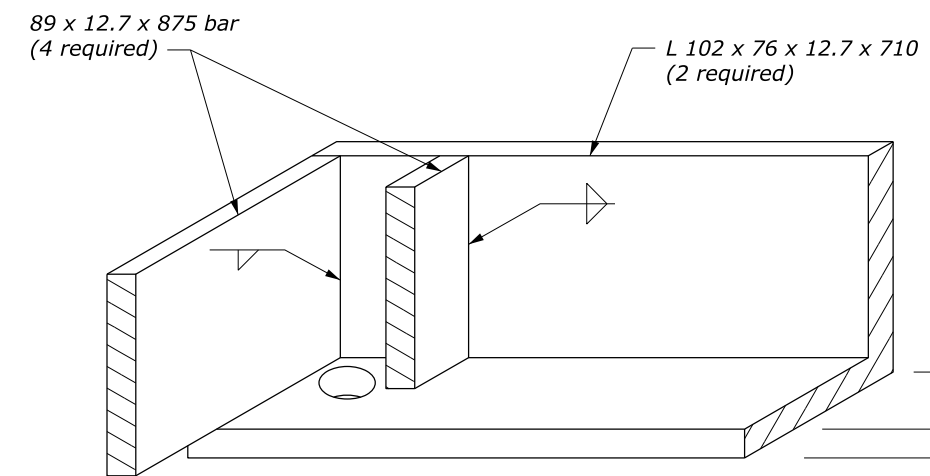
1. Hot dip galvanize all metal parts for frame and grate after fabrication.
2. Fabricate frame and grate from structural steel.
3. Furnish M20 x 120 x 200 mm anchor bolts with nuts to attach frame to inlet.
4. Cut holes in 89 x 12.7 mm bar as required to place 16 mm diameter rods
5. Spot weld 16 mm diameter rods for frame and grate to 89 x 12.7 mm bars.
6. Furnish hardware in the metric sizes shown. Equivalent US Customary sizes may be used when metric sizes are unavailable.
7. Dimensions without units are millimeters.



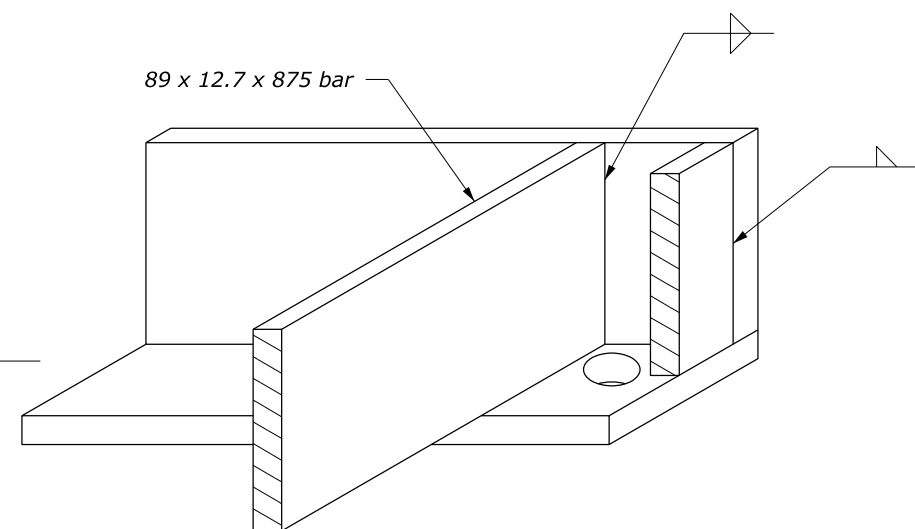
SECTION A-A



DETAIL D



DETAIL A (OBLIQUE)



DETAIL C (OBLIQUE)

U.S. DEPARTMENT OF TRANSPORTATION FEDERAL HIGHWAY ADMINISTRATION FEDERAL LANDS HIGHWAY	
METRIC STANDARD	
FRAME AND GRATE TYPE 5A	
STANDARD APPROVED FOR USE 3/1996	STANDARD
REVISED: 6/2005	M604-6

NO SCALE