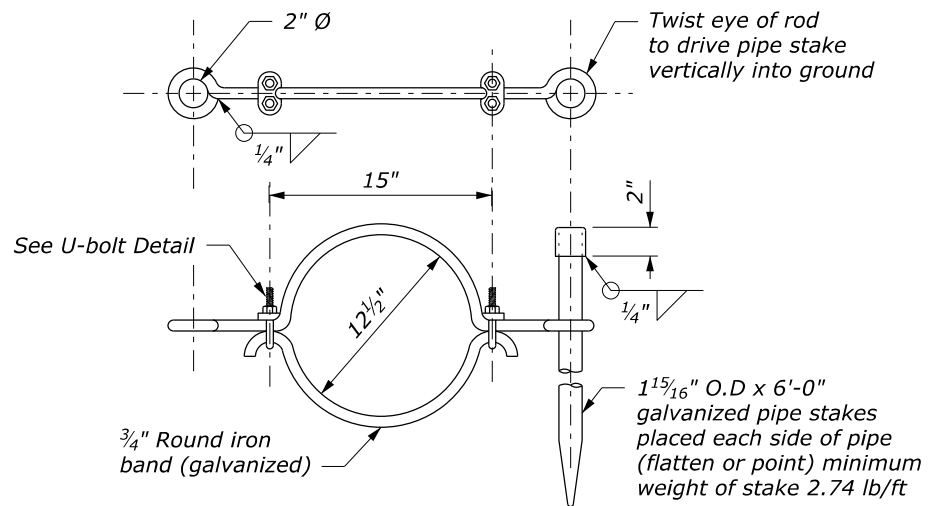
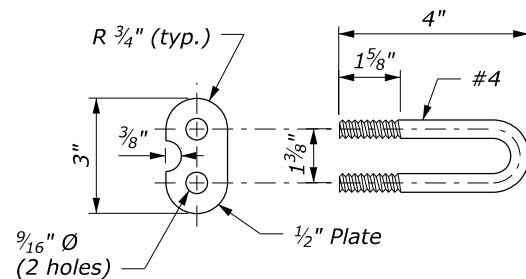


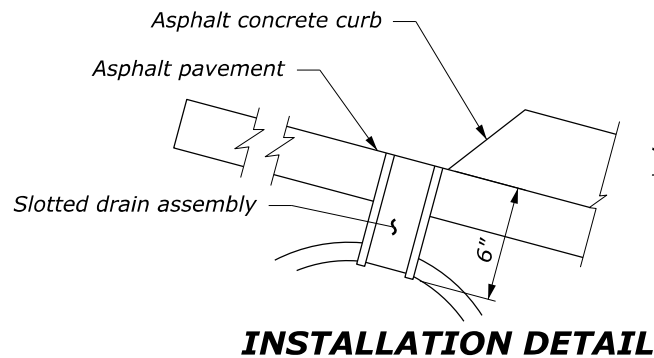
**ALTERNATE 1**



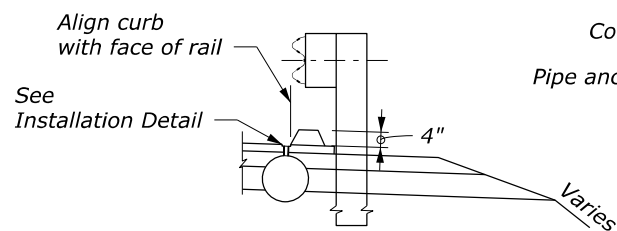
**ALTERNATE 2**



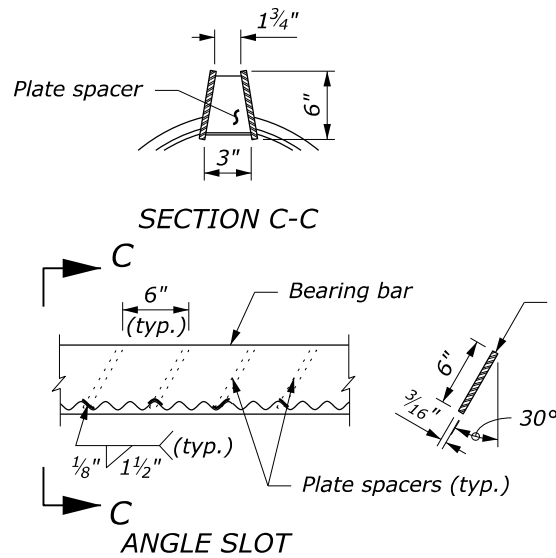
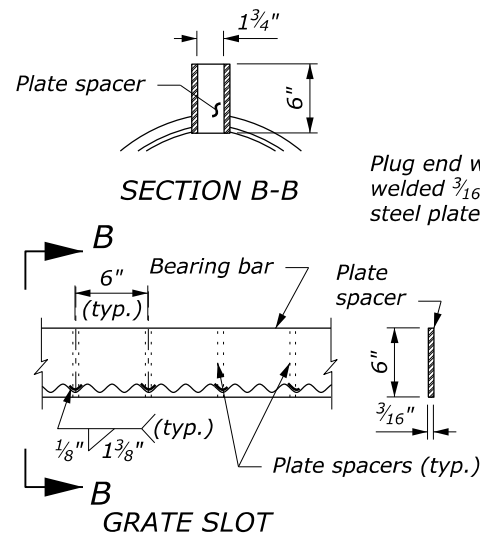
**U-BOLT DETAIL**



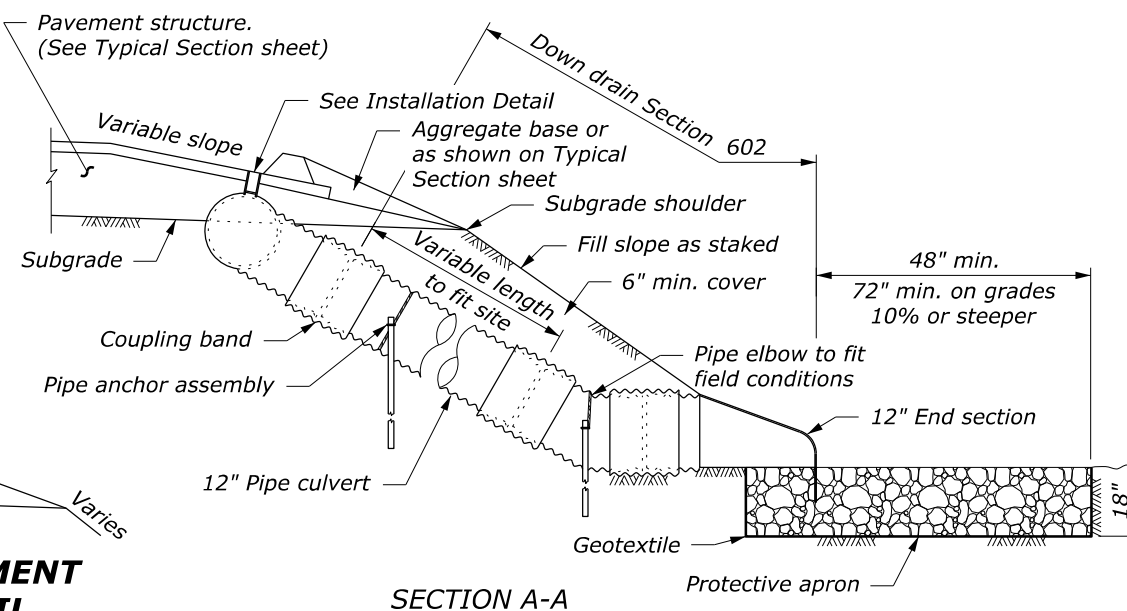
**INSTALLATION DETAIL**



**TYPICAL PLACEMENT AT GUARDRAIL**



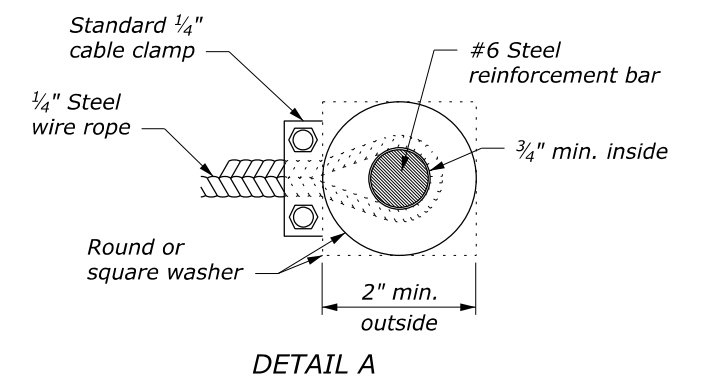
**SLOTTED DRAIN ASSEMBLY**



**SECTION A-A**

**NOTE:**

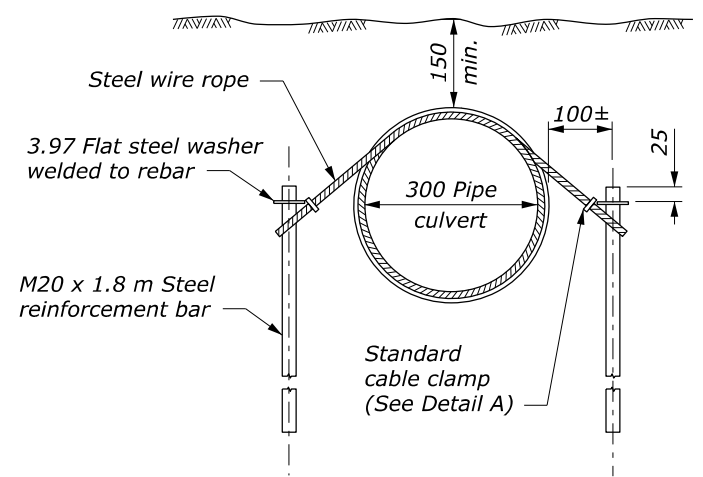
1. Fabricate slotted drain pipe, down drain pipe culvert, elbows, end section, and coupling bands from sheets 1/16" thickness.
2. Grate slot assembly and plate end plug conform to AASHTO M 183.
3. Galvanize grate slot assembly, plate end plug, and all hardware according to AASHTO M 111.
4. Approved alternate pipe anchor assemblies may be used.
5. Place Class 2 riprap conforming to Section 251 for protective apron.
6. Place pipe anchor assemblies approximately 20-foot intervals along down drain pipe culvert. Place a minimum of 2 anchors per down drain.
7. For installations at sag vertical curves, use a tee connection instead of an elbow and a minimum of two 20-foot slotted drain pipe sections.
8. Place gaskets under all band connections in accordance with Section 602. Refer to Standard 602-2 for coupling band details.
9. Use either the grate slot or the angle slot slotted drain assembly.



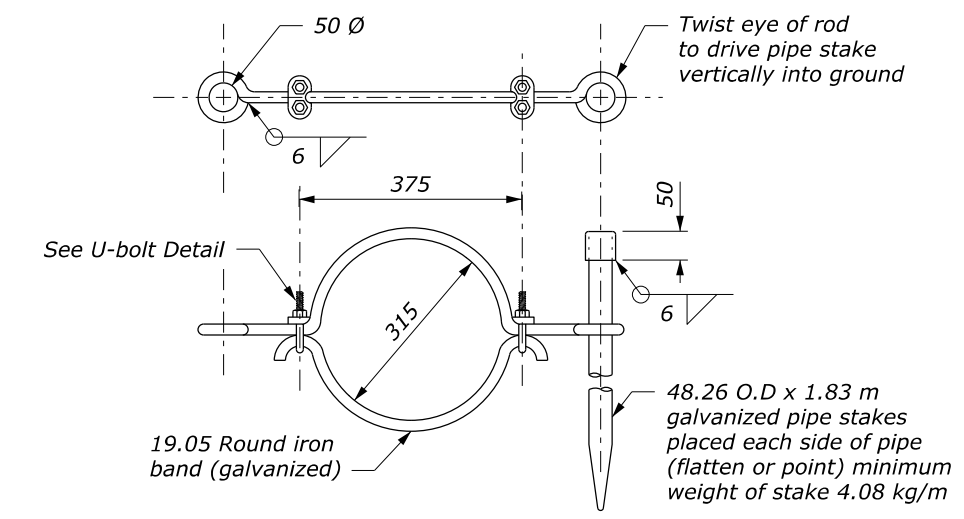
**DETAIL A**

NO SCALE

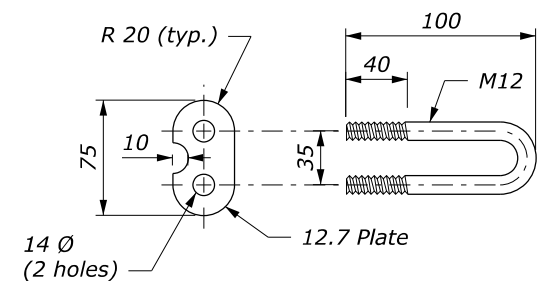
U.S. DEPARTMENT OF TRANSPORTATION FEDERAL HIGHWAY ADMINISTRATION OFFICE OF FEDERAL LANDS HIGHWAY	
FLH STANDARD	
<b>SLOTTED DRAIN SPILLWAY ASSEMBLY</b>	
STANDARD APPROVED FOR USE 6/2005	STANDARD
REVISED: DRAFT: 3/2014	606-1



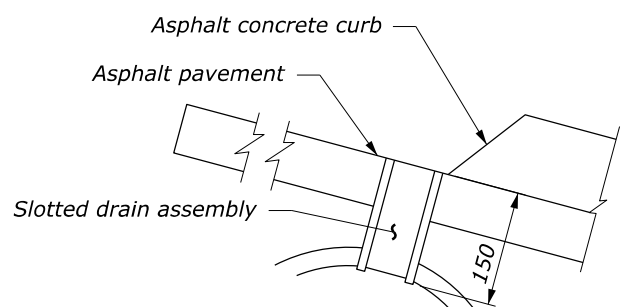
**ALTERNATE 1**



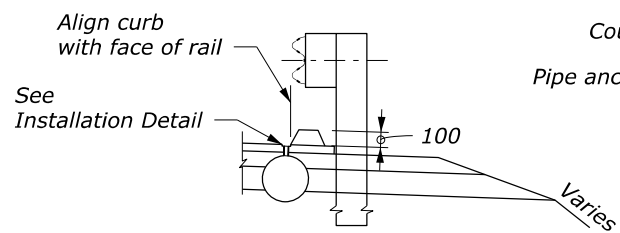
**ALTERNATE 2**



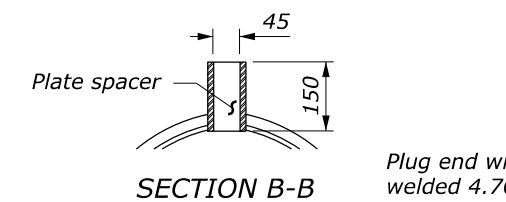
**U-BOLT DETAIL**



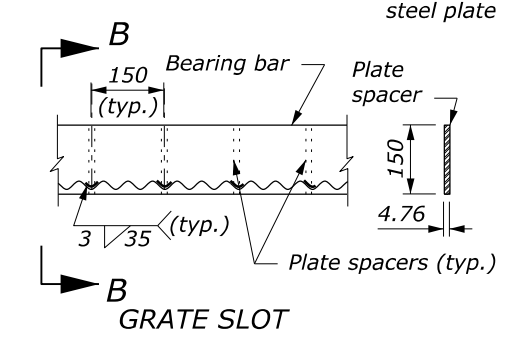
**INSTALLATION DETAIL**



**TYPICAL PLACEMENT AT GUARDRAIL**



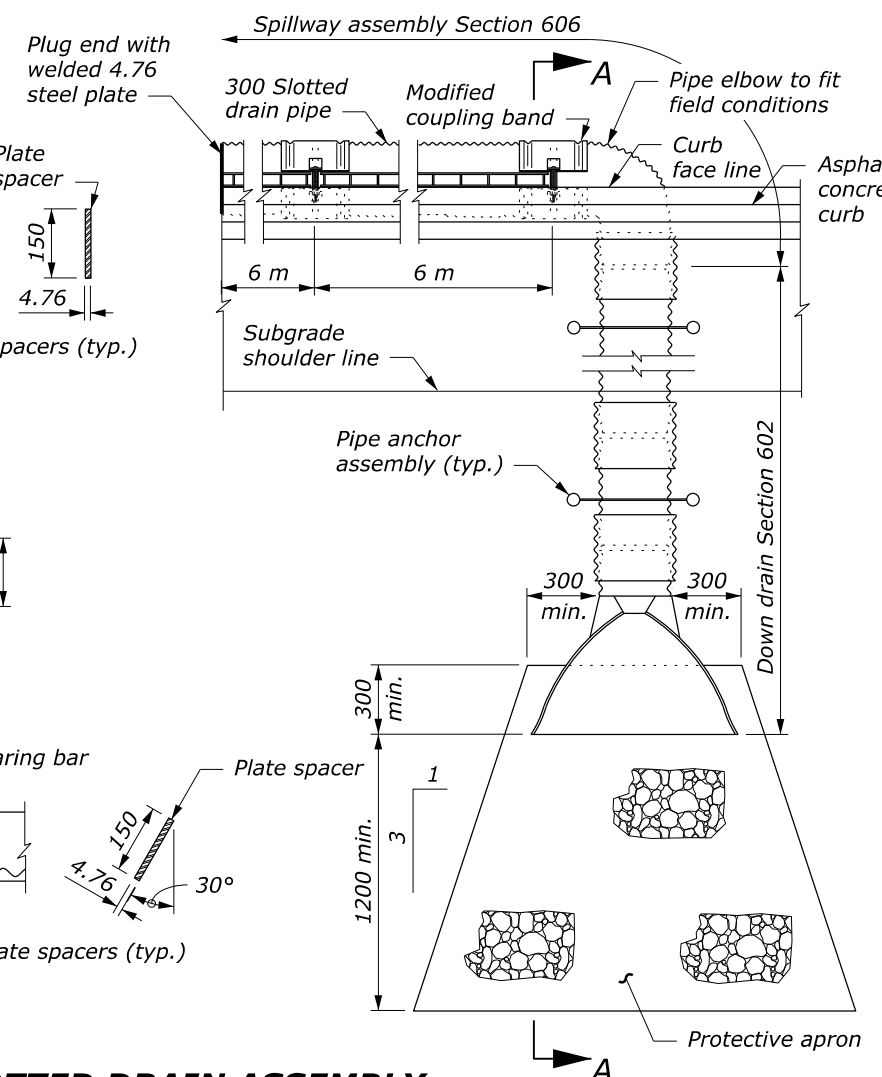
**SECTION B-B**



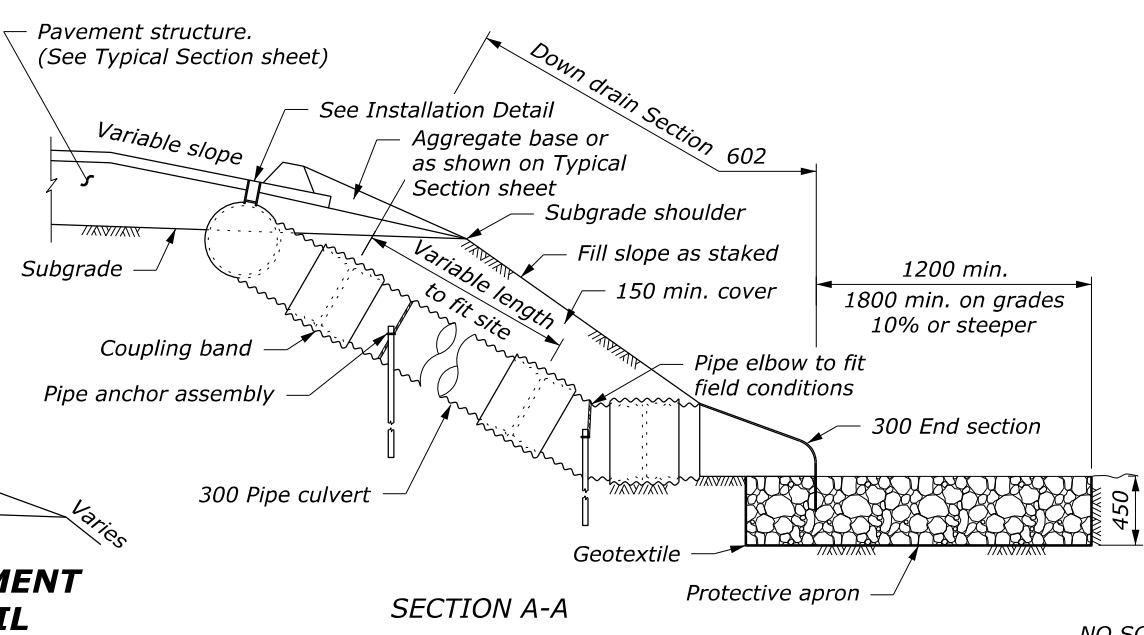
**SECTION C-C**

**GRATE SLOT**

**ANGLE SLOT**



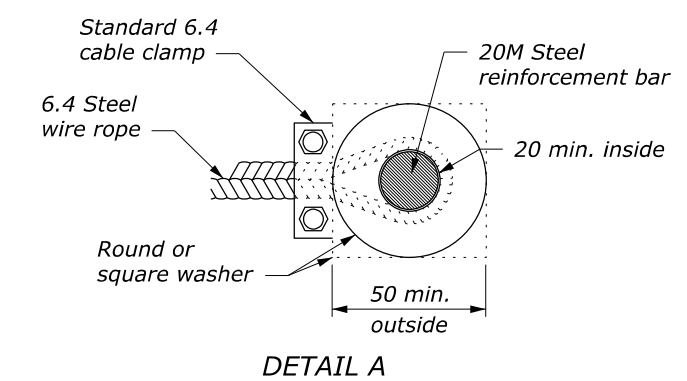
**SLOTTED DRAIN ASSEMBLY**



**SECTION A-A**

**NOTE:**

1. Fabricate slotted drain pipe, down drain pipe culvert, elbows, end section, and coupling bands from sheets 1.62 mm thickness.
2. Grate slot assembly and plate end plug conform to AASHTO M 183.
3. Galvanize grate slot assembly, plate end plug, and all hardware according to AASHTO M 111.
4. Approved alternate pipe anchor assemblies may be used.
5. Place Class 2 riprap conforming to Section 251 for protective apron.
6. Place pipe anchor assemblies approximately 6-meter intervals along down drain pipe culvert. Place a minimum of 2 anchors per down drain.
7. For installations at sag vertical curves, use a tee connection instead of an elbow and a minimum of two 6-meter slotted drain pipe sections.
8. Place gaskets under all band connections in accordance with Section 602. Refer to Standard M602-2 for coupling band details.
9. Use either the grate slot or the angle slot slotted drain assembly.
10. Provide hardware in the metric sizes shown. Equivalent US Customary sizes may be used when metric sizes are not available.
11. Dimensions without units are millimeters.



**DETAIL A**

U.S. DEPARTMENT OF TRANSPORTATION FEDERAL HIGHWAY ADMINISTRATION OFFICE OF FEDERAL LANDS HIGHWAY	
METRIC FLH STANDARD	
<b>SLOTTED DRAIN SPILLWAY ASSEMBLY</b>	
STANDARD APPROVED FOR USE 3/1996	STANDARD
REVISED: 6/2005 DRAFT: 3/2014	M606-1

NO SCALE

12 September 2023 10:54 AM c:\pwwork\dms00747\Std606-1.dgn [Metric]