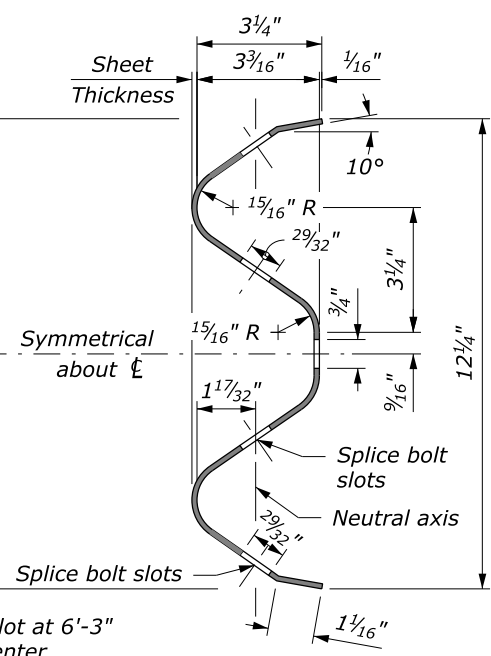
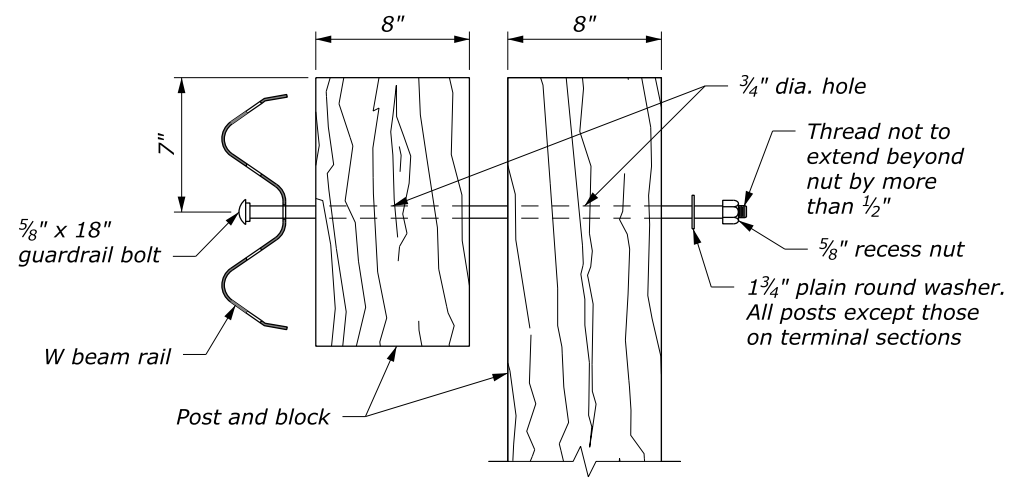


**RAIL ELEVATION**



**SECTION A-A**

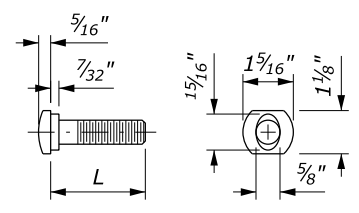
**W BEAM RAIL**



**POST BOLT ASSEMBLY**

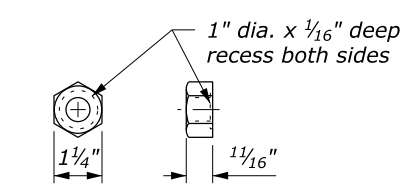
**NOTE:**

1. When encountering impenetrable material, see Standards 617-13 or 617-24.
2. See Special Contract Requirements when 7 foot or longer posts are specified.
3. See Special Contract Requirements when the alternative hole arrangement is specified.
4. Install delineator every fourth post. Fasten delineator to post using two 2" x 3/8" lag screws with washers, along centerline of post; or fasten as specified by the manufacturer.
5. Dimensional tolerances not shown or implied are intended to be those consistent with the proper functioning of the part, including its appearance, and accepted manufacturing practices.



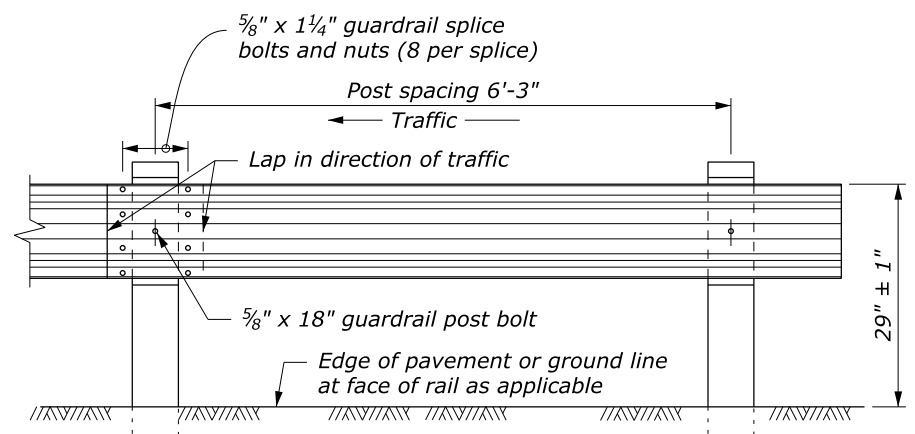
**5/8" GUARDRAIL BOLT**

L	Thread Length
1 1/4"	1 1/8" minimum
2"	1 3/4" minimum
10"	4" minimum
18"	4" minimum
25"	4" minimum

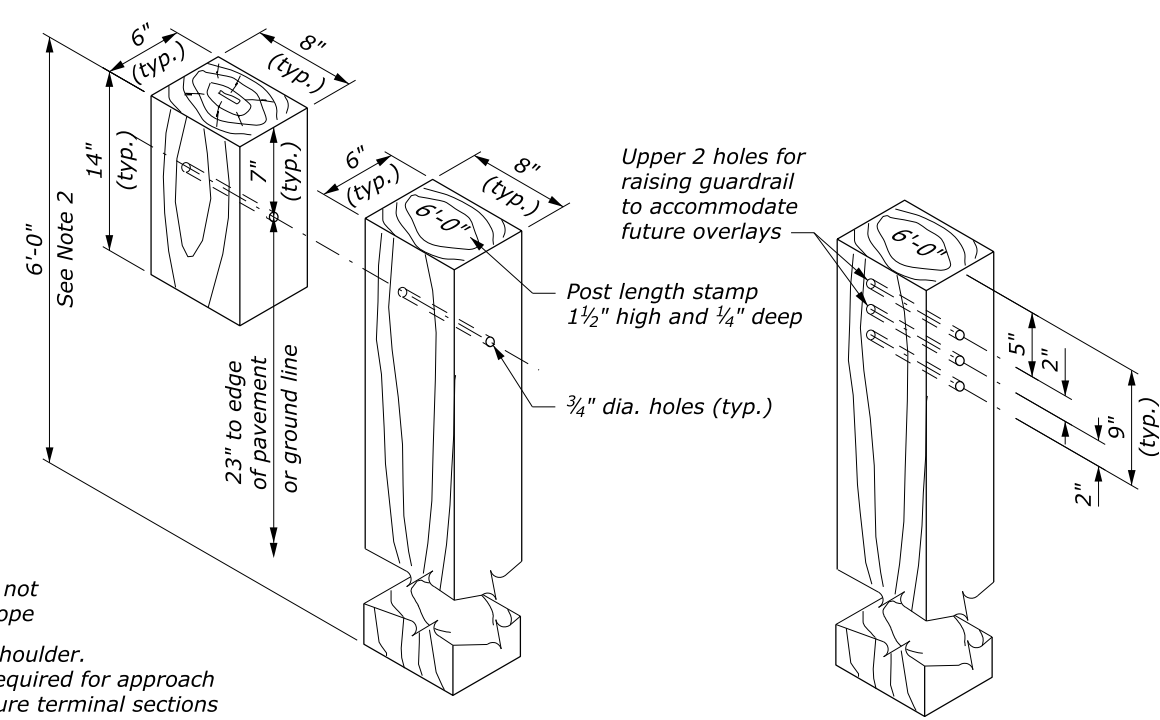


**5/8" RECESS NUT**

**GUARDRAIL BOLT AND RECESS NUT**

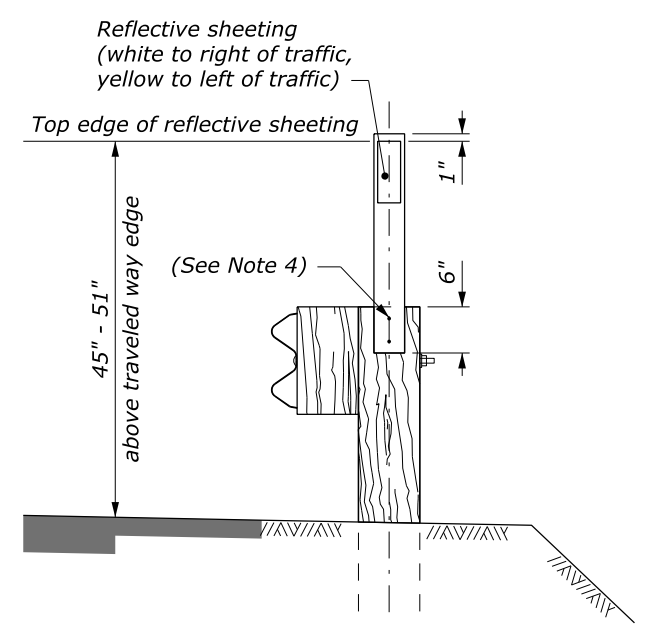


**POST SPACING STANDARD POST SECTION**

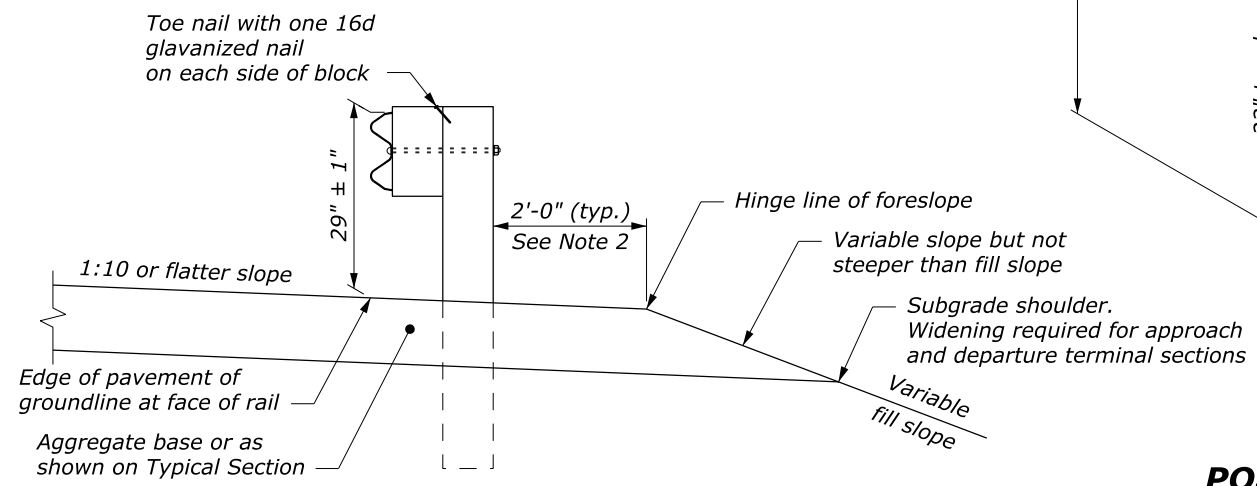


**STANDARD HOLE ARRANGEMENT POST AND BLOCK DETAIL**

**ALTERNATE HOLE ARRANGEMENT POST AND BLOCK DETAIL**



**FLEXIBLE GUIDE POST GUARDRAIL MOUNT**



**TYPICAL GUARDRAIL CROSS SECTION**

U.S. DEPARTMENT OF TRANSPORTATION  
FEDERAL HIGHWAY ADMINISTRATION  
FEDERAL LANDS HIGHWAY

U.S. CUSTOMARY STANDARD

**G4 W-BEAM GUARDRAIL  
WOOD POSTS**

STANDARD APPROVED FOR USE 1/1994  
REVISED: 4/1994 6/2005  
DRAFT: 9/2017

STANDARD  
617-10

NO SCALE