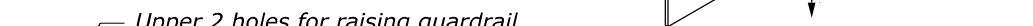


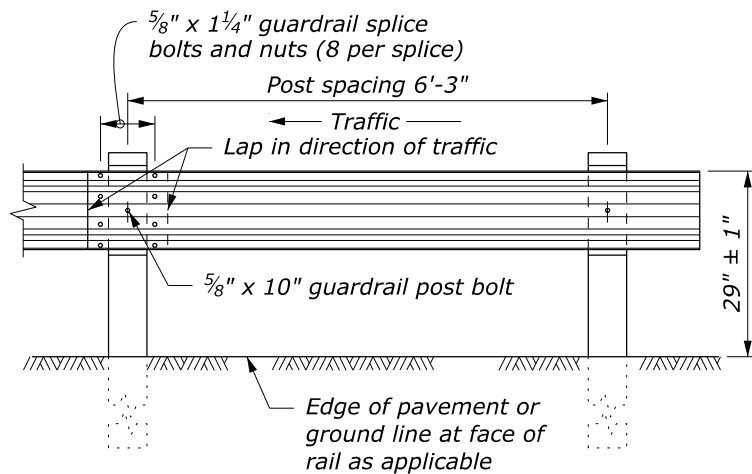
STANDARD HOLE ARRANGEMENT POST AND BLOCK DETAIL



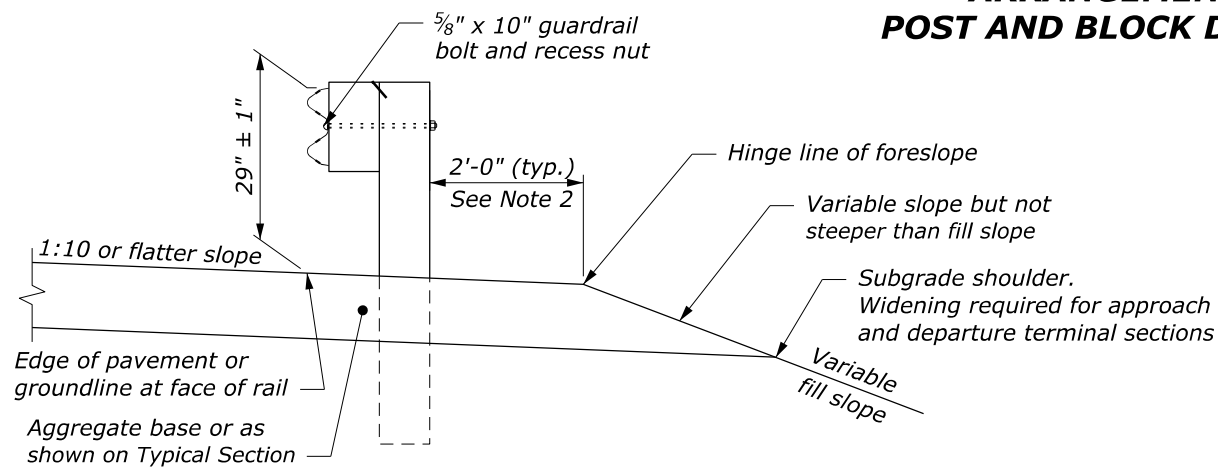
NOTE:

1. When encountering impenetrable material, see Standard 617-13.
2. See Special Contract Requirements when 7 foot or longer posts are specified.
3. See Special Contract Requirements when the alternative hole arrangement is specified.
4. Install delineator every fourth post. Fasten delineator to post using two galvanized 2" x 3/8" bolts with a washer on both sides, a lock washer, and nut; or fasten as specified by the manufacturer.
5. Modified block may be wood, plastic, or composite material. Use consistent material throughout the length of guardrail run.
6. Dimensional tolerances not shown or implied are intended to be those consistent with the proper functioning of the part, including its appearance, and accepted manufacturing practices.

W BEAM RAIL

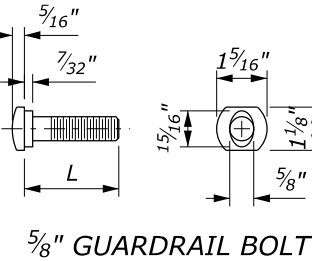
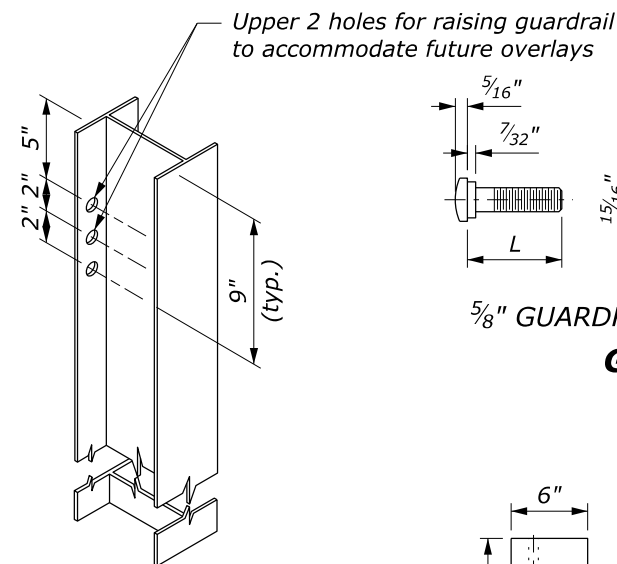


POST SPACING STANDARD POST SECTION



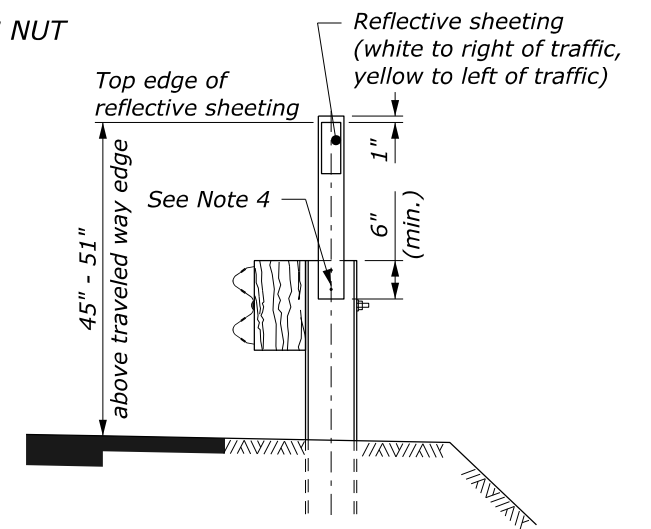
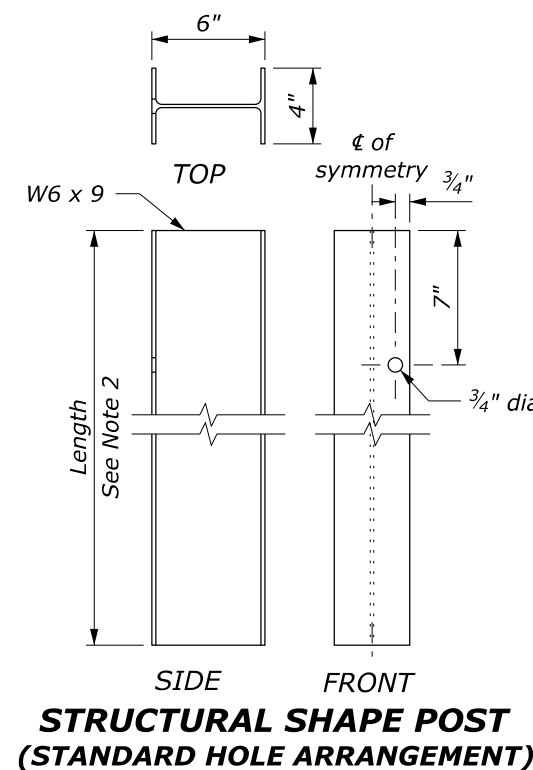
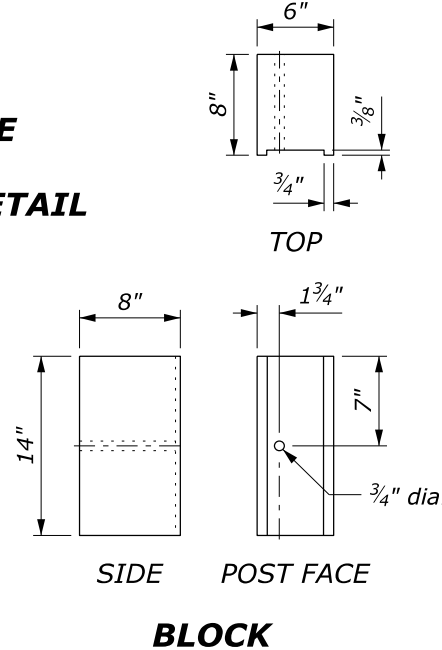
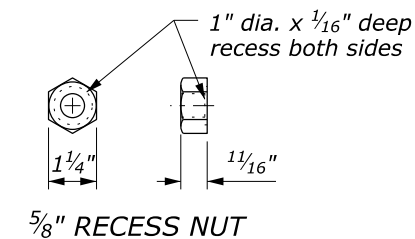
TYPICAL GUARDRAIL CROSS SECTION

ALTERNATE HOLE ARRANGEMENT POST AND BLOCK DETAIL



GUARDRAIL BOLT AND RECESS NUT

L	Thread Length
1 1/4"	1 1/8" minimum
2"	1 3/4" minimum
10"	4" minimum
18"	4" minimum
25"	4" minimum



FLEXIBLE GUIDE POST GUARDRAIL MOUNT

U.S. DEPARTMENT OF TRANSPORTATION
FEDERAL HIGHWAY ADMINISTRATION
OFFICE OF FEDERAL LANDS HIGHWAY

FLH STANDARD

G4 W-BEAM GUARDRAIL STEEL POSTS

STANDARD APPROVED FOR USE 1/1994
REVISED: 4/1994 6/2005 7/2022

STANDARD
617-11

NO SCALE