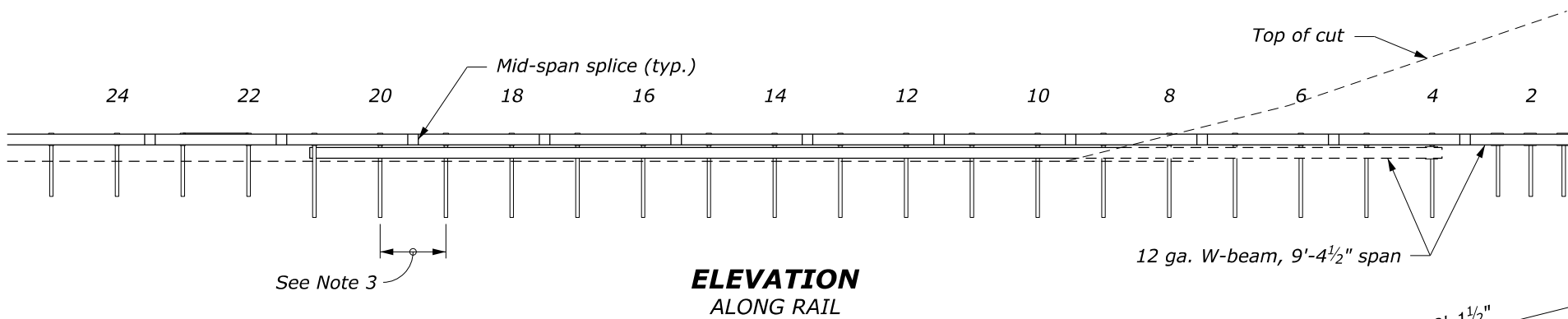


PLAN

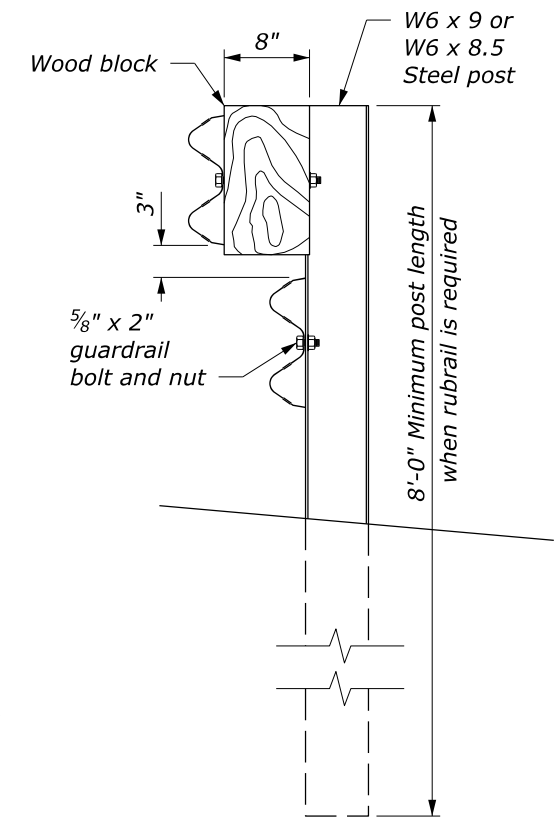


**ELEVATION
ALONG RAIL**

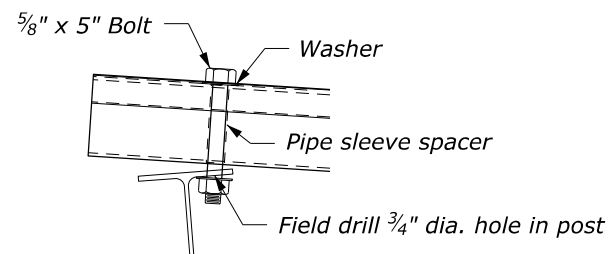
POST OFFSETS FROM EDGE OF SHOULDER	
POST	DISTANCE
1	13'-11 3/4"
4	10'-11"
6	8'-10 1/4"
10	5'-9"

NOTE:

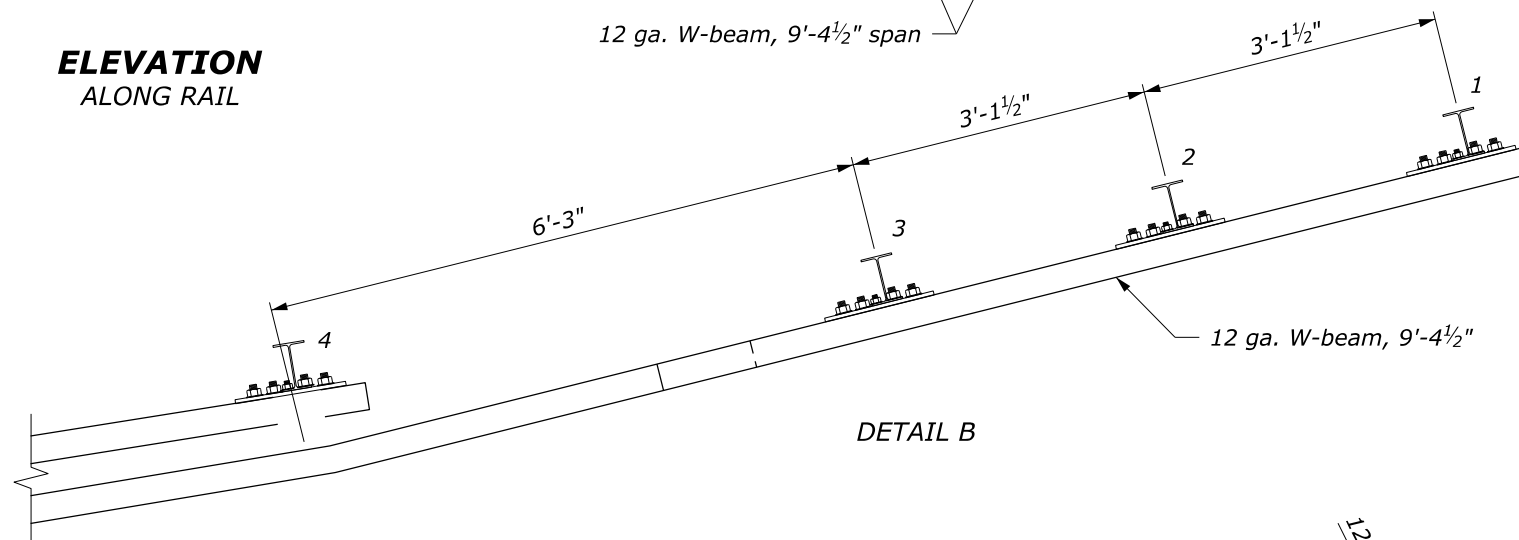
1. Steel posts shown. Wood posts may be used as an alternate, except that steel posts are required for Posts 1 - 3.
2. See Standard 617-31 (wood posts) and 617-32 (steel posts) for other details.
3. Typical post spacing is 6'-3" unless otherwise noted.



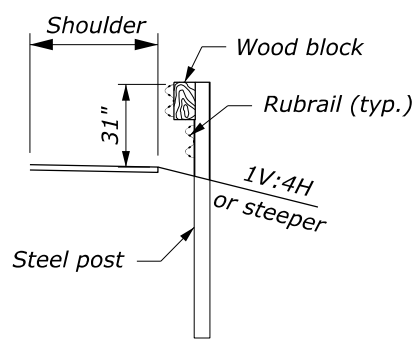
**ELEVATION
STEEL POST
AND BLOCK DETAIL**



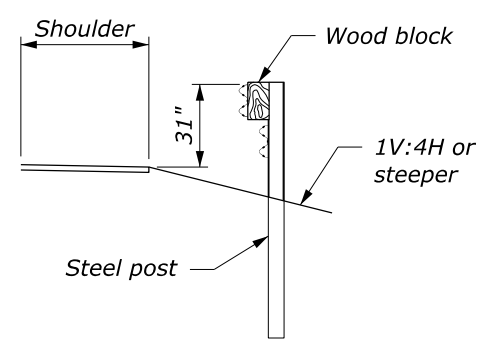
DETAIL A



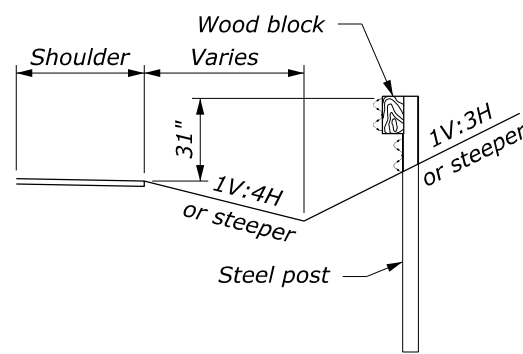
DETAIL B



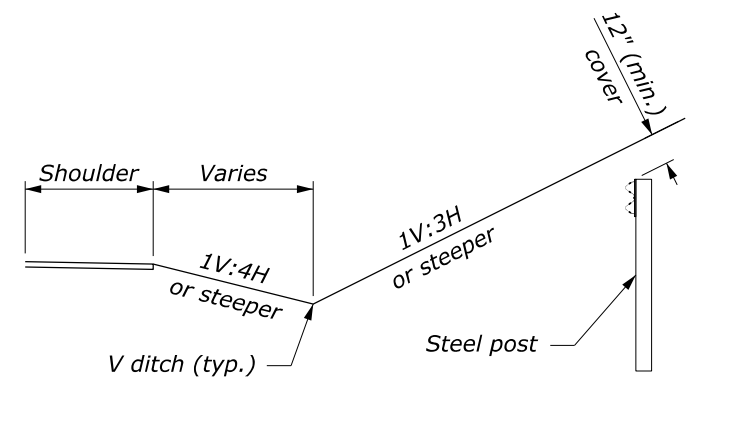
SECTION A-A



SECTION B-B



SECTION C-C



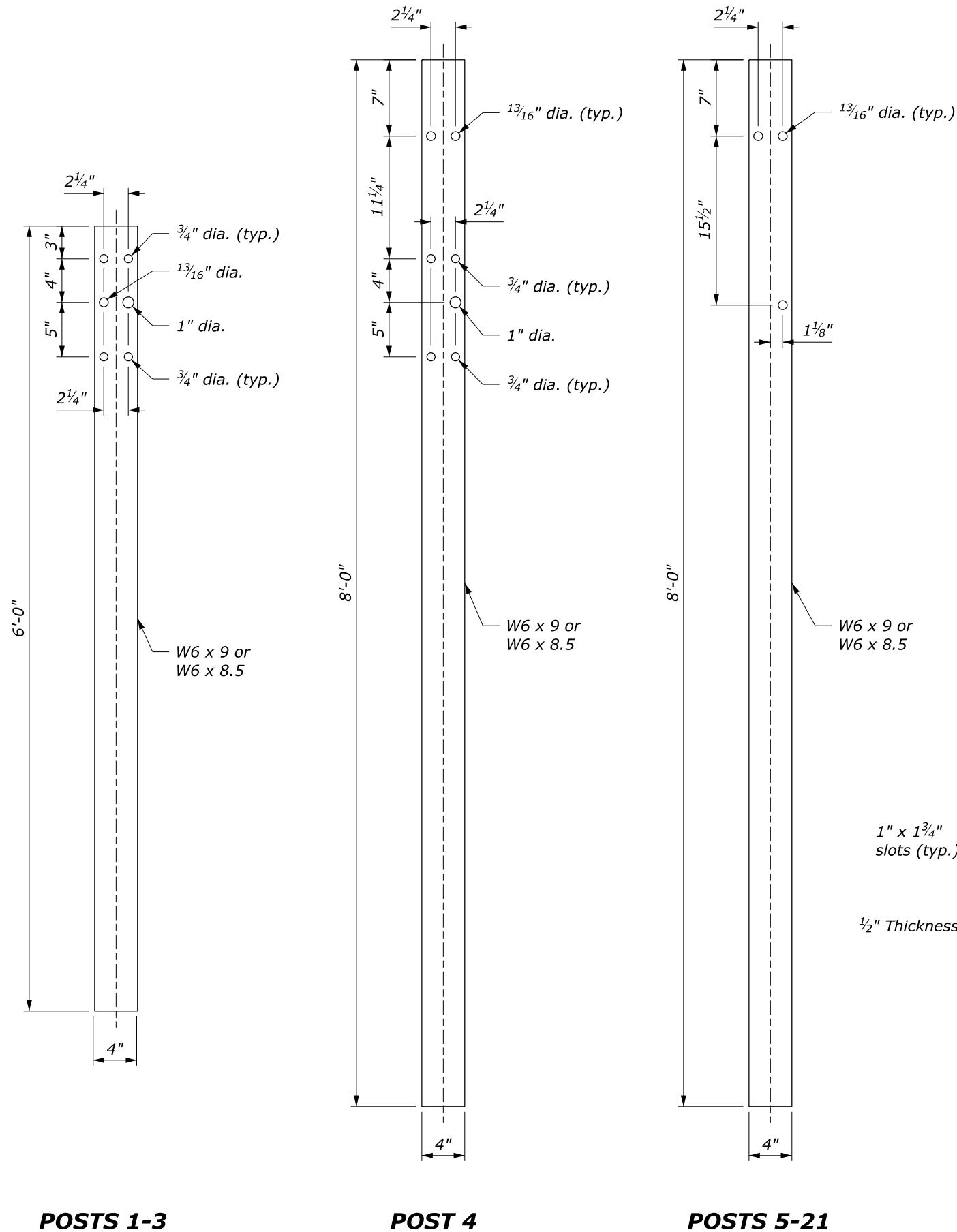
SECTION D-D

NO SCALE

U.S. DEPARTMENT OF TRANSPORTATION
FEDERAL HIGHWAY ADMINISTRATION
OFFICE OF FEDERAL LANDS HIGHWAY

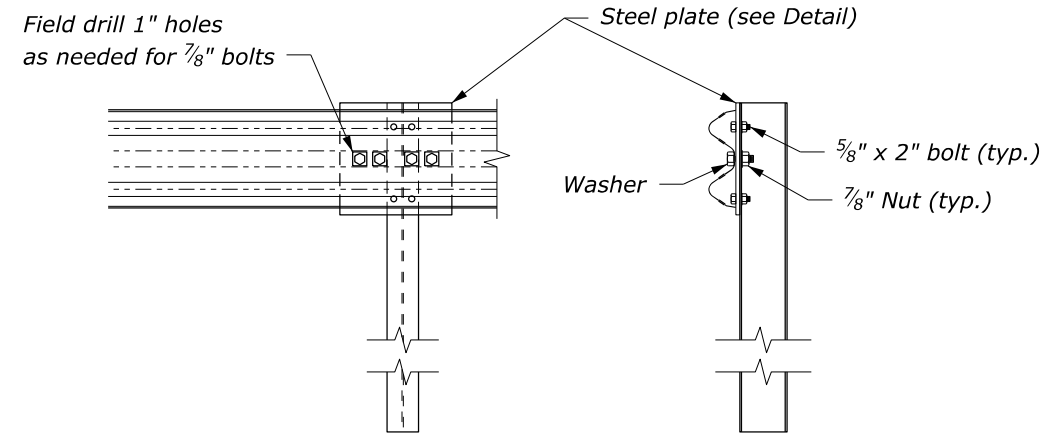
FLH STANDARD
**MGS W-BEAM GUARDRAIL
BACK SLOPE ANCHOR TERMINAL
TYPE MGS-BAT**
Sheet 1 of 2

STANDARD APPROVED FOR USE 6/2022	STANDARD
REVISED:	617-18

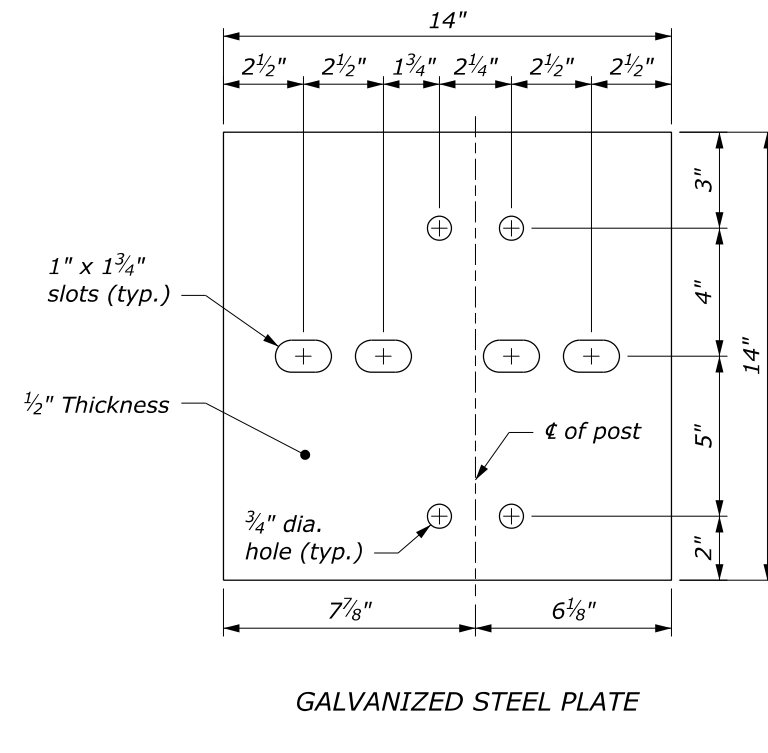


NOTE:

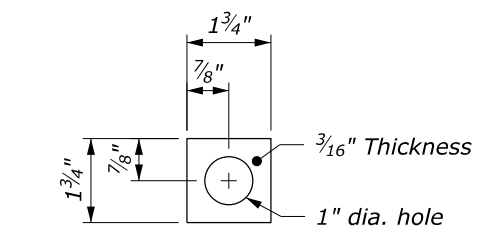
1. See Sheet 1 of 2 for terminal layout.
2. Use zinc rich paint to coat field drilled holes.
3. Anchor plate and hardware are typical on top rail of Posts 1 -3 and rub rail at Post 4.



**SPECIAL RAIL TO POST CONNECTION
AT POSTS 1, 2, AND 3**



GALVANIZED STEEL PLATE



GALVANIZED SQUARE WASHER

STEEL PLATE AND WASHER
See Note 3

NO SCALE

U.S. DEPARTMENT OF TRANSPORTATION FEDERAL HIGHWAY ADMINISTRATION OFFICE OF FEDERAL LANDS HIGHWAY	
FLH STANDARD MGS W-BEAM GUARDRAIL BACK SLOPE ANCHOR TERMINAL TYPE MGS-BAT Sheet 2 of 2	
STANDARD APPROVED FOR USE 6/2022 REVISED:	STANDARD 617-18

Designer Notes: FLH Standard Drawing 617-18
Last Updated: August 2021

MGS W-Beam Guardrail, Back Slope Anchor Terminal Type MGS-BAT

General Information

Appropriate Applications.

- In areas of cut sections, or where the road is transitioning from cut to fill, the back slope anchor terminates a W-beam guardrail installation by burying the end into a slope.

<i>Crash Test Criteria</i>	MASH
<i>Test Level</i>	TL-3
<i>FHWA Eligibility Letter</i>	None available
<i>TF 13 Designator</i>	Not posted
<i>Crash Test Report</i>	TTI report 608431-01-1&2

Limitations. Need a steep, natural backslope to bury the terminal into (1V:3H or steeper). Need a 1V:4H or flatter foreslope.

Layout Guidance.

- See AASHTO *Roadside Design Guide*, Section 8.3.6.1
- Carefully review the site, especially the foreslope, backslope, and ditch configuration. Verify onsite drainage needs can be met.

Typical Pay Item Used

- 61702-1700 Terminal section, type MGS-BAT [EA]

Updates

February 2019

- New Detail drawing

April 2020

- Revised LON point, note 2, added rail height callouts, revised steel post callouts

August 2021

- Converted from CFL Detail to FLH Standard, updated notes, and plate detail