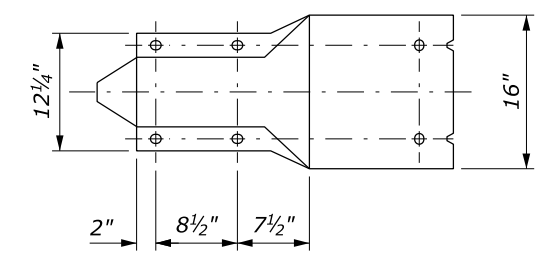
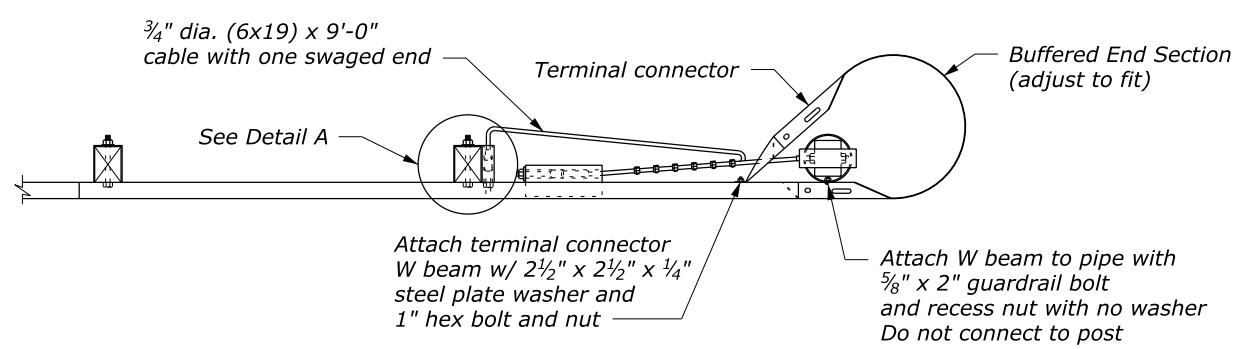
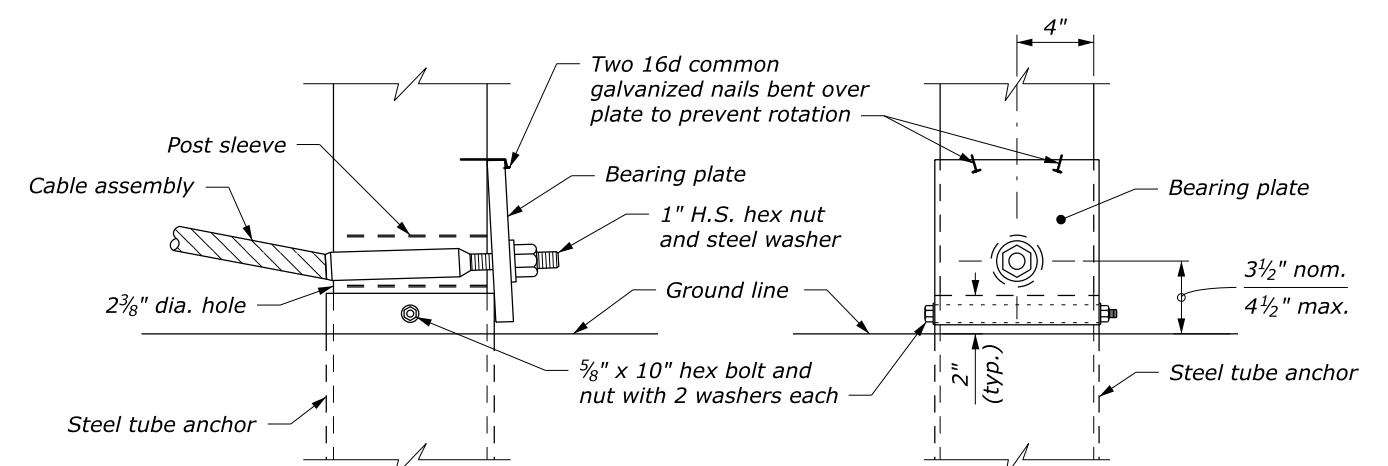
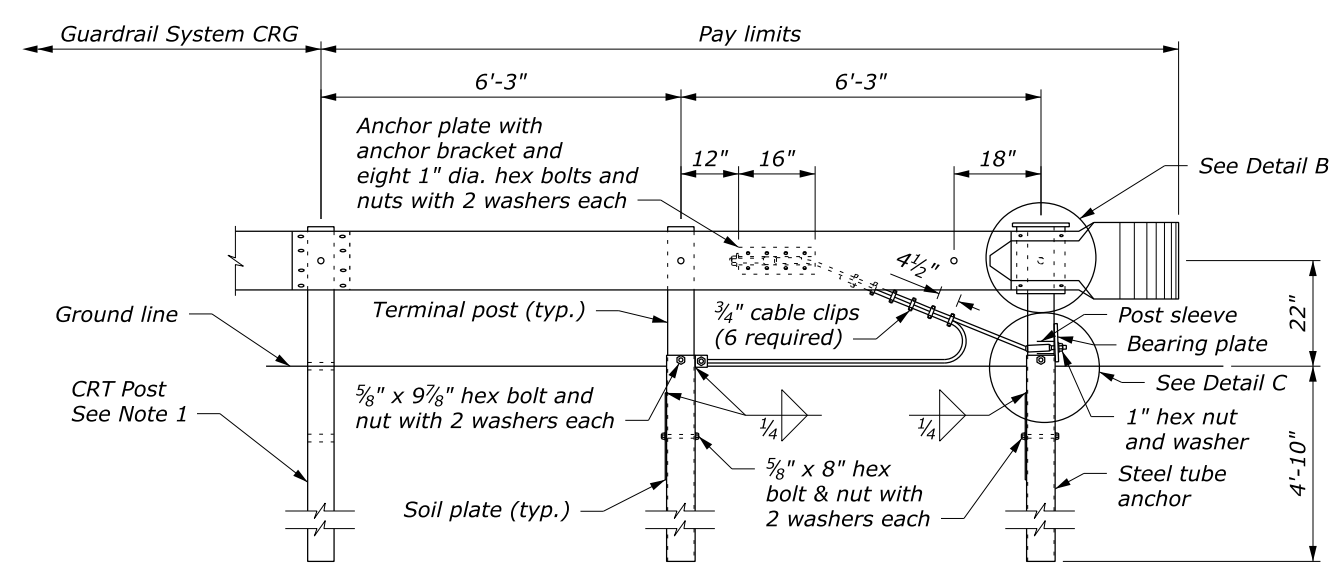


NOTE:

- See Standards 617-15 and 617-21 for other details.
- Dimensional tolerances not shown or implied are intended to be those consistent with the proper functioning of the part, including its appearance, and accepted manufacturing practices.



BUFFERED END SECTION



DETAIL C
POST ASSEMBLY

NO SCALE

U.S. DEPARTMENT OF TRANSPORTATION FEDERAL HIGHWAY ADMINISTRATION FEDERAL LANDS HIGHWAY	
U.S. CUSTOMARY STANDARD G4 W-BEAM GUARDRAIL CABLE RELEASING TERMINAL TYPE CRT, WOOD POSTS	
STANDARD APPROVED FOR USE 1/1994	STANDARD
REVISED: 4/1994 6/2005 DRAFT: 2/2014	617-22

c:\myfiles\pw_production\dm67487\std617-22.dgn [USC] 9 March 2017 1:57 PM