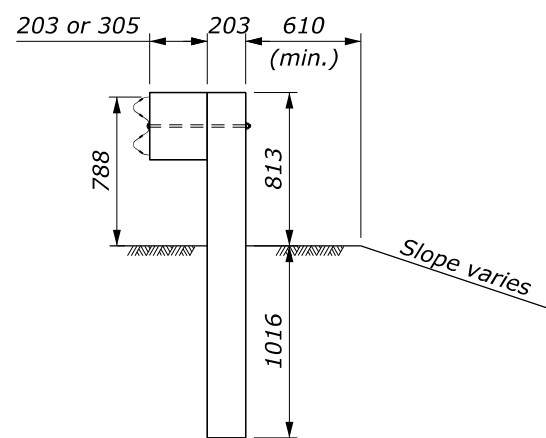
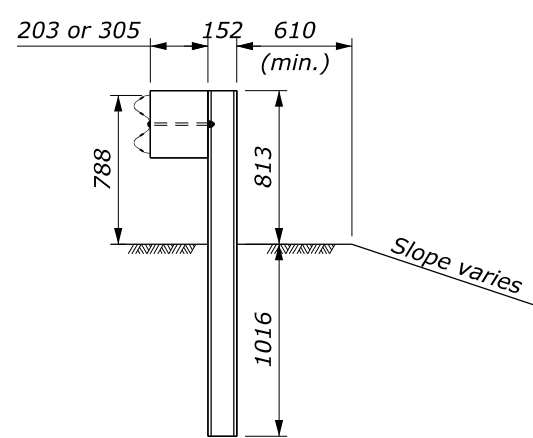


NOTE:

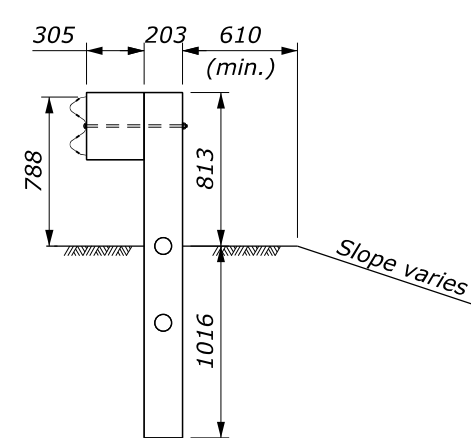
1. Posts ① and ⑧ may be wood or steel.
2. Use wood posts for CRT posts.
3. The minimum length of guardrail, including the end terminals, upstream and downstream of posts ② and ⑦ is 19.05 m.
4. In locations where the culvert headwall extends above the finished grade to act as a vertical roadway curb, the maximum height of the culvert headwall above the finished grade is 50 mm.
5. See Standard M617-31 or M617-32 for other assembly details.
6. Dimensions without units are millimeters.



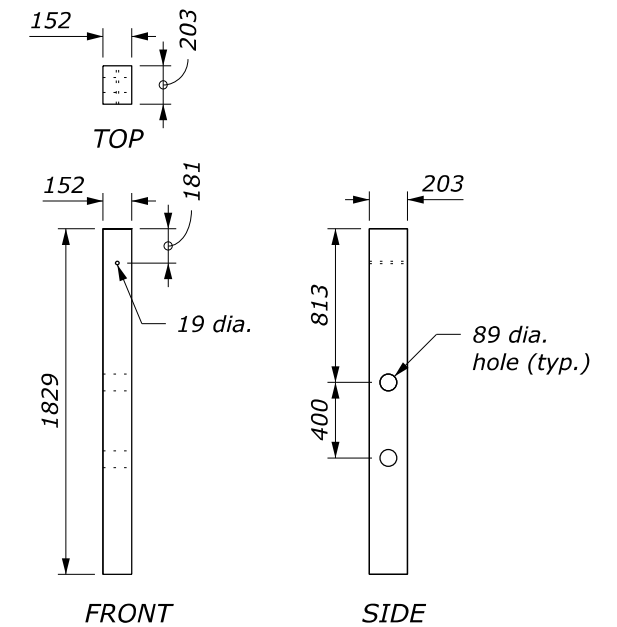
WOOD POST DETAIL
POST ① AND ⑧
See Note 1



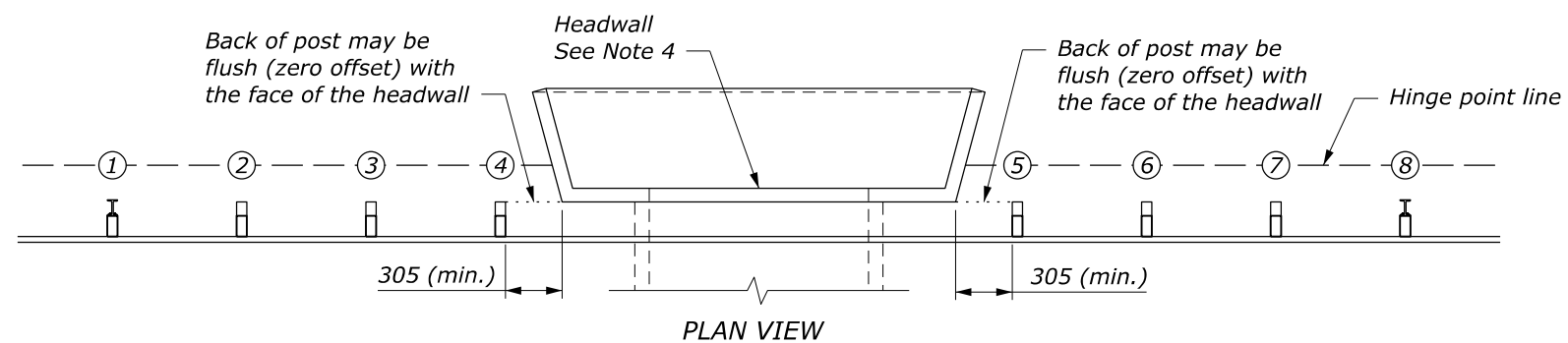
STEEL POST DETAIL
POST ① AND ⑧
See Note 1



CRT POST DETAIL
POST ② AND ⑦
See Note 2



CRT WOOD POST



SPAN WITH HEADWALL DETAIL

NO SCALE

| | |
|--|---------------------|
| U.S. DEPARTMENT OF TRANSPORTATION FEDERAL HIGHWAY ADMINISTRATION OFFICE OF FEDERAL LANDS HIGHWAY | |
| METRIC FLH STANDARD | |
| MGS W-BEAM GUARDRAIL LONG-SPAN SYSTEM | |
| STANDARD APPROVED FOR USE 7/2022 REVISED: | STANDARD M617-37 |

Designer Notes: FLH Standard Drawing 617-37
Last Updated: June 2022

MGS W-Beam Guardrail Long-Span System

General Information

Appropriate Applications.

- Long-span guardrail systems are used to span low-fill culverts. This drawing may also be used if an impenetrable object is encountered at post locations during construction.

| | |
|--------------------------------|-------------------------------|
| Crash Test Criteria | MASH |
| Test Level | TL-3 |
| FHWA Eligibility Letter | B-133, B-211A |
| TF 13 Designator | SGR20a-b, SGR38a-e |
| Crash Test Report | MwRSF Report No TRP-03-187-07 |

Limitations. The maximum span is 25 feet.

Layout Guidance.

- See AASHTO *Roadside Design Guide* Section 5.4.2
- See the FLH *Midwest Guardrail System FAQ* document for more information.

Typical Pay Item Used

- 61701-4550 Guardrail system MGS, type 2, class A wood posts [LNFT] for galvanized steel
- 61701-5150 Guardrail system MGS, type 4, class B wood posts [LNFT] for weathering steel

Note: long-span systems are paid for using the same pay item as roadside rail.

Updates

February 2019

- New Detail drawing

June 2022

- Converted from CFL Detail to FLH Standard