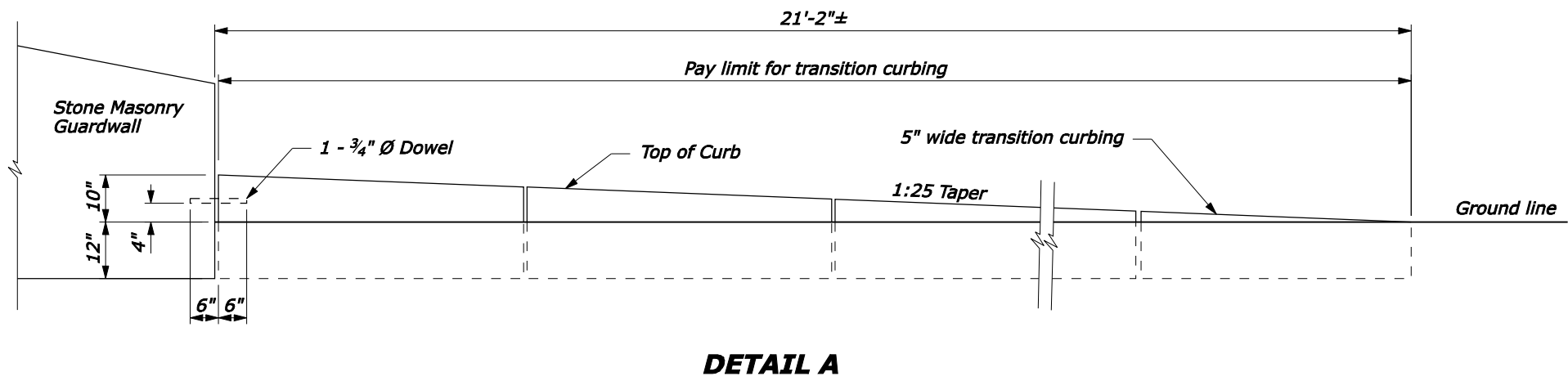
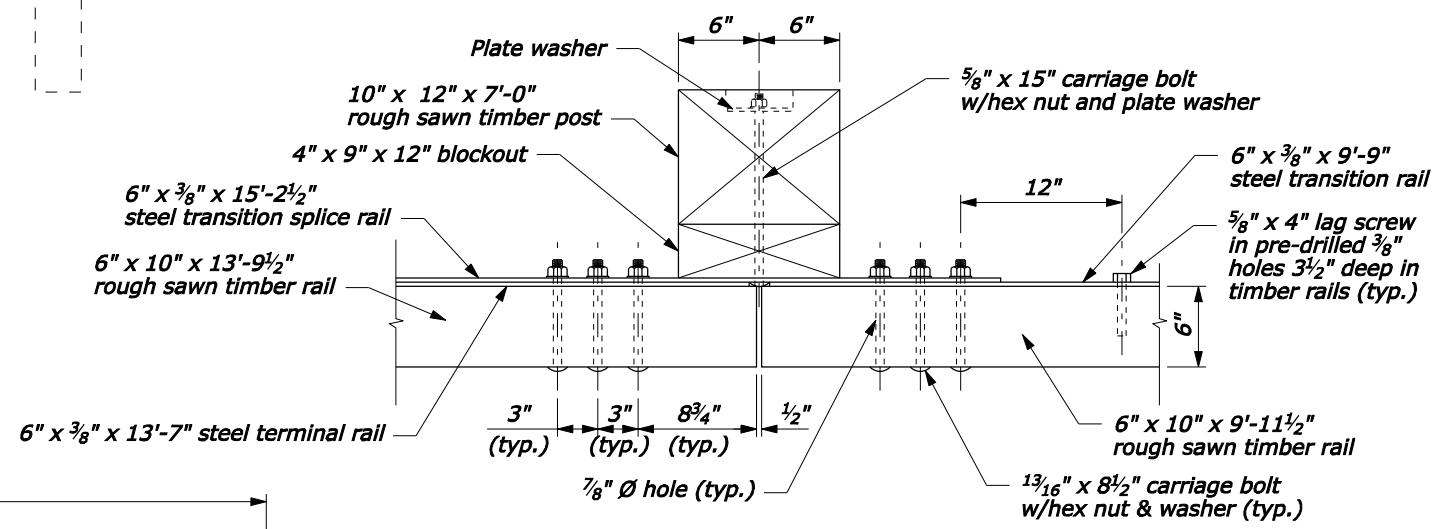
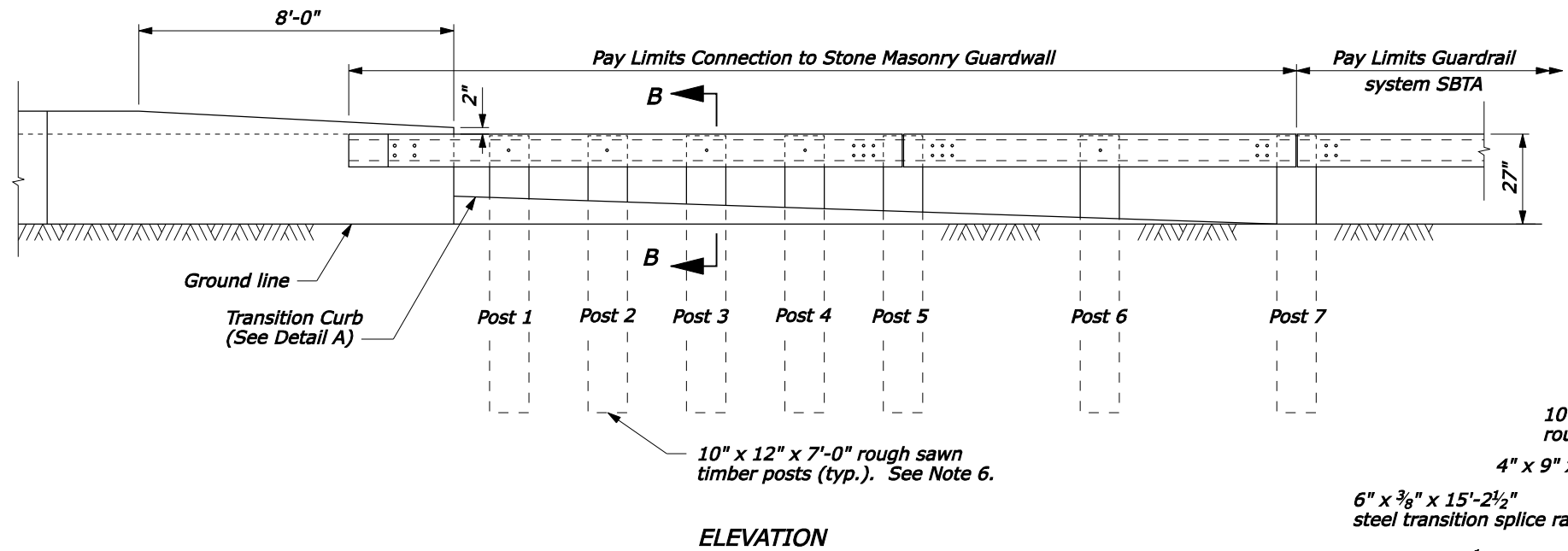


- NOTE:**
1. See Sheet 2 of 2 for Sections A-A through C-C, steel rail layouts, and other details.
 2. Use weathering steel for all structural steel and fastener hardware.
 3. Transition curbing (including dowel) will be paid for at the contract unit price for transition curbing.
 4. Install transition curbing of material type specified in plans.
 5. Curb may be continuous or slabs at least 4'-11" in length. Install faces of slabs evenly and with maximum $\frac{1}{8}"$ separation.
 6. If contract requires steel post, substitute wood post with 6" x 9" x 6'-6" long steel post.



NO SCALE

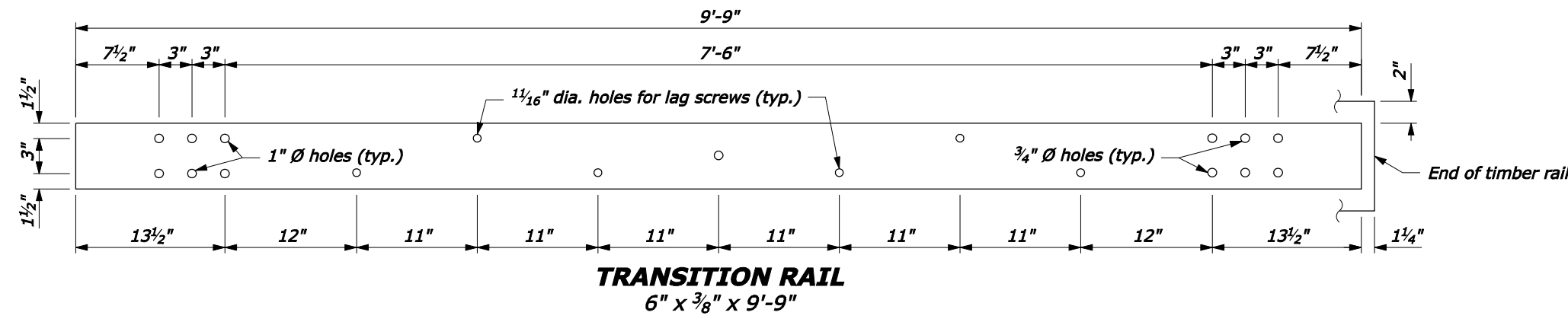
U.S. DEPARTMENT OF TRANSPORTATION
FEDERAL HIGHWAY ADMINISTRATION
FEDERAL LANDS HIGHWAY

U.S. CUSTOMARY STANDARD
**STEEL-BACKED TIMBER GUARDRAIL
TL-3 CONNECTION TO
STONE MASONRY GUARDWALL**
Sheet 1 of 2

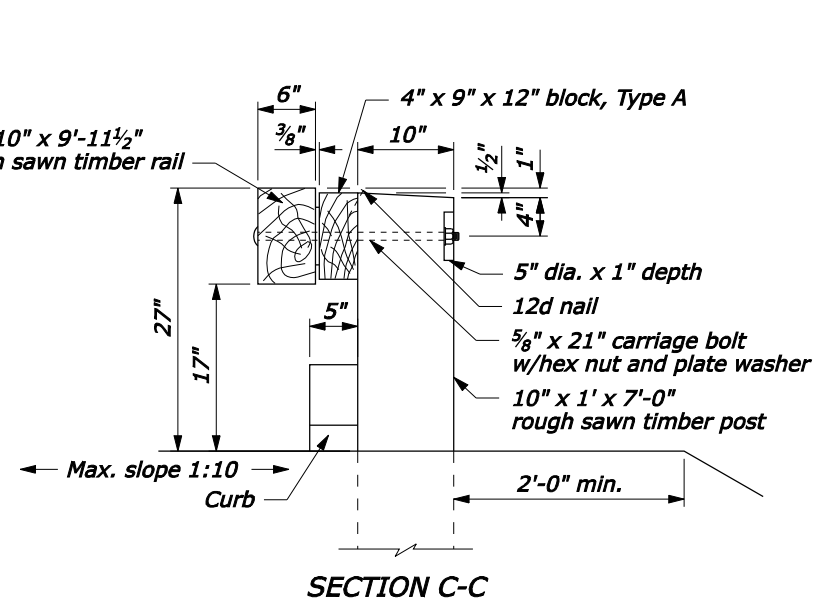
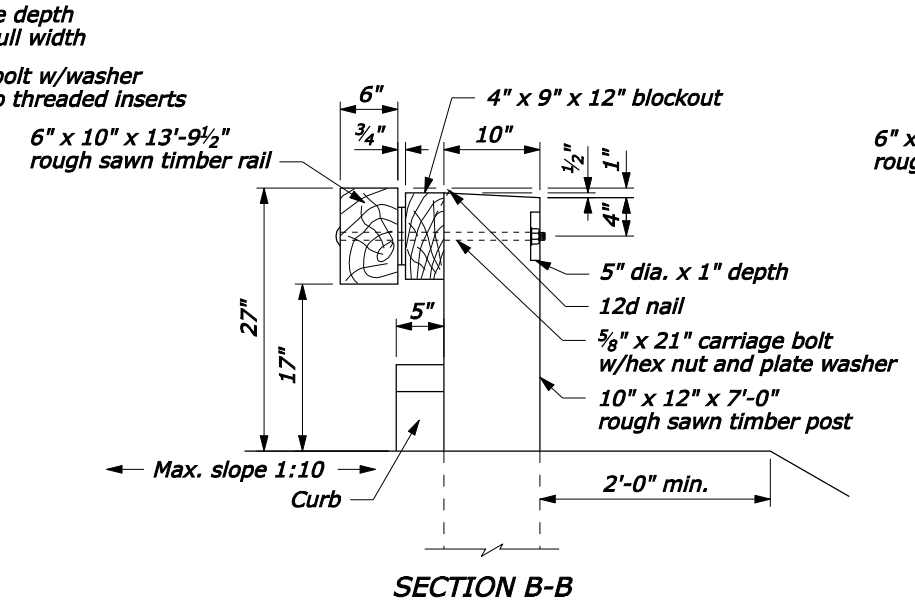
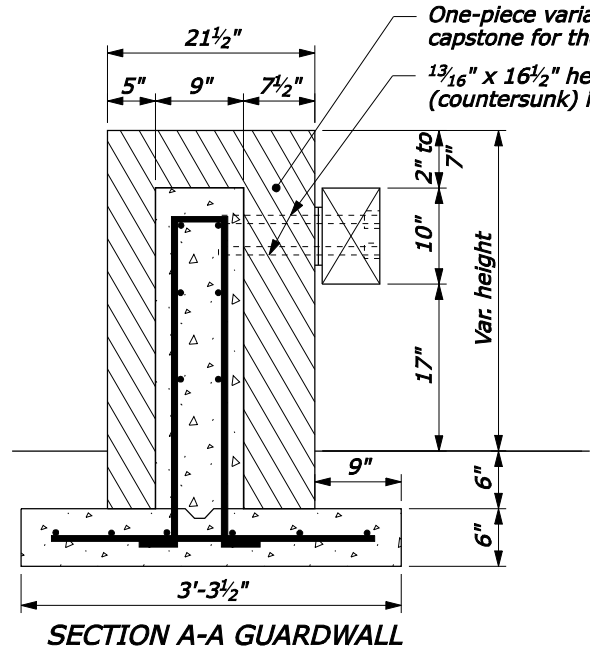
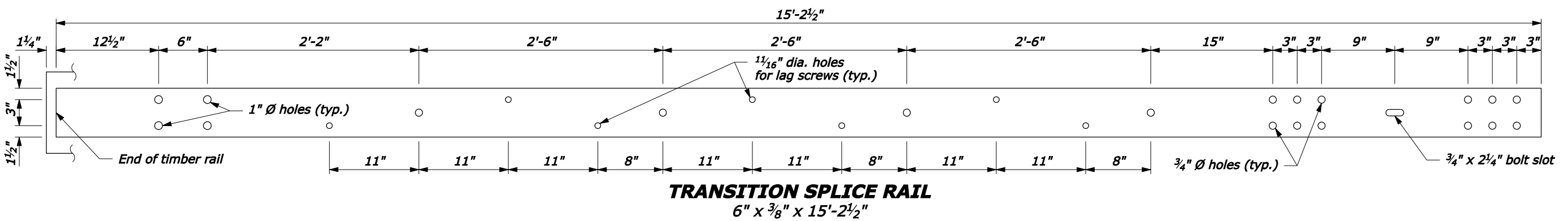
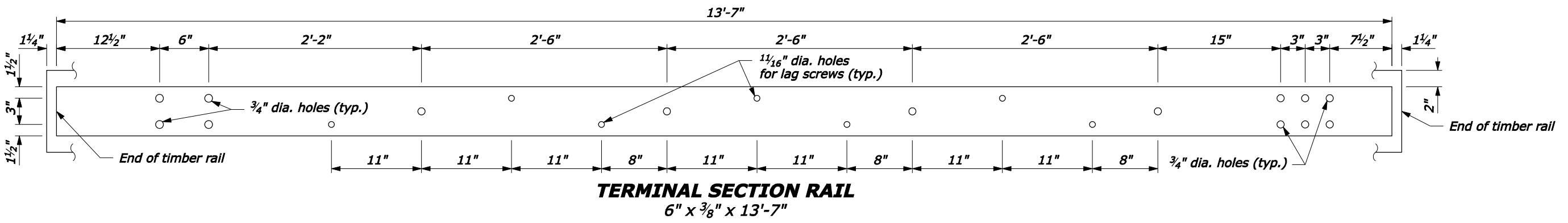
STANDARD APPROVED FOR USE --/----

REVISED: DRAFT: 1/2008	STANDARD 617-65
---------------------------	--------------------

P:\198.145.186.2\std. plan\std. plan\std61765.dgn [US Customary] 23-Jan-2008 11:19 AM



NOTE:
1. Pre-drill 1 1/16" holes in blocks outs and posts.



NO SCALE

U.S. DEPARTMENT OF TRANSPORTATION
FEDERAL HIGHWAY ADMINISTRATION
FEDERAL LANDS HIGHWAY

**U.S. CUSTOMARY STANDARD
STEEL-BACKED TIMBER GUARDRAIL
TL-3 CONNECTION TO
STONE MASONRY GUARDWALL**
Sheet 2 of 2

STANDARD APPROVED FOR USE --/----

REVISED: DRAFT: 1/2008

STANDARD
617-65

Rpt://198.145.186.2/std.pln/651765.dgn [US Customary] 23-Jan-2008 11:21 AM