

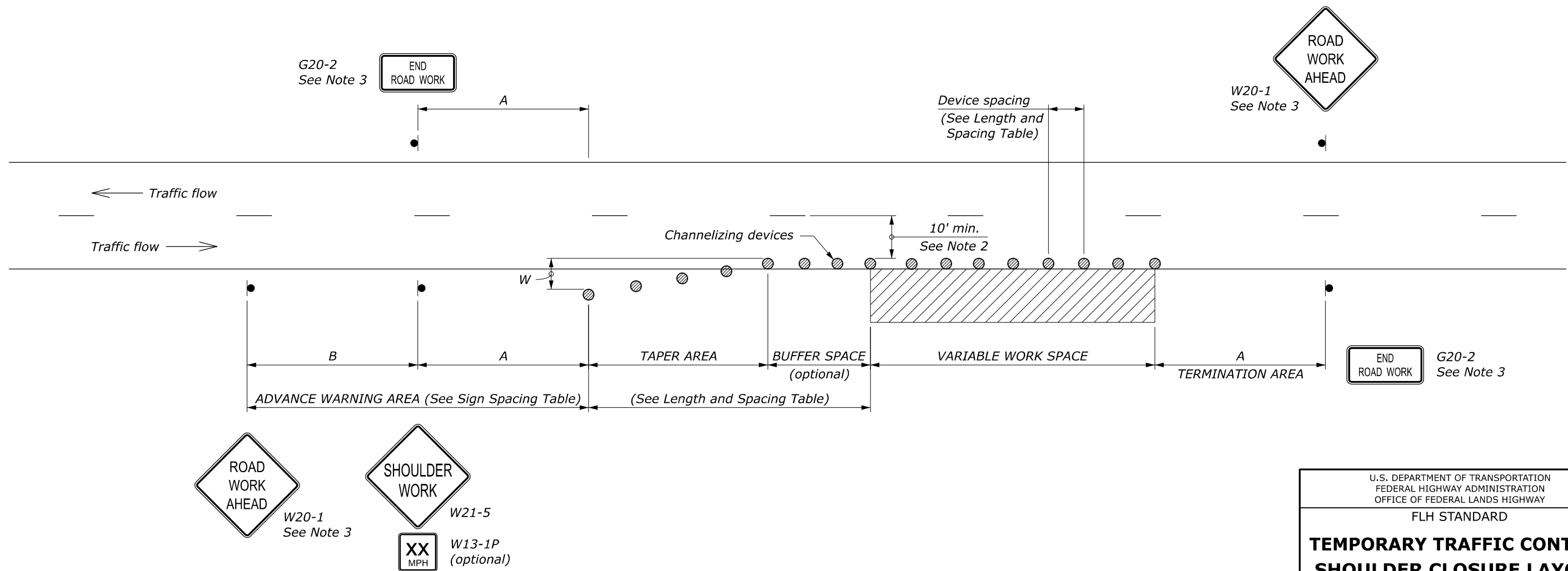
LENGTH AND SPACING TABLE					
APPROACH SPEED*	MINIMUM TAPER LENGTH**	BUFFER SPACE LENGTH	CHANNELIZING DEVICE		
			TAPER AREA	BUFFER SPACE	WORK SPACE
MPH	FEET	FEET	SPACING IN FEET		
20	Shoulder taper formula: $L = \frac{WS^2}{180}$ for $S \leq 40$ MPH	115	20	40	40
25		155	25	50	50
30		200	30	60	60
35	$L = \frac{WS}{3}$ for $S \geq 45$ MPH	250	35	70	70
40		305	40	80	80
45		360	45	90	90
50	Where: $L =$ Minimum length of taper	425	50	100	100
55	$W =$ Width of offset in feet	495	55	110	110
60	$S =$ Numerical value of posted speed limit or 85 percentile speed prior to work in miles per hour	570	60	120	120
65		645	65	130	130
70		730	70	140	140

SIGN SPACING TABLE			
ROAD TYPE	DISTANCE BETWEEN SIGNS IN FEET		
	A	B	C
Urban and Rural 30 MPH and less	100	100	100
Urban and Rural 35 MPH to 50 MPH	350	350	350
Rural greater than 50 MPH	500	500	500
Expressway / Freeway	1000	1500	2640

**NOTE:**

1. Final location and spacing of devices may be changed to fit field conditions as approved by the CO.
2. For project specific minimum width, refer to Special Contract Requirements, Section 156.
3. If shoulder closure is completely within the project limits, eliminate the ROAD WORK AHEAD (W20-1) and END ROAD WORK (G20-2) signs.
4. Do not allow equipment, materials, or vehicles to be parked or stored in the buffer space.

\* Approach speed based on the regulatory posted speed, not the advisory speed.  
 \*\* Lengthen taper as needed to provide minimum of three channelizing devices in taper at required spacing.



NO SCALE

U.S. DEPARTMENT OF TRANSPORTATION  
 FEDERAL HIGHWAY ADMINISTRATION  
 OFFICE OF FEDERAL LANDS HIGHWAY

FLH STANDARD

**TEMPORARY TRAFFIC CONTROL  
 SHOULDER CLOSURE LAYOUT**

STANDARD APPROVED FOR USE 6/2005  
 REVISED: 7/2022

STANDARD  
 635-10