

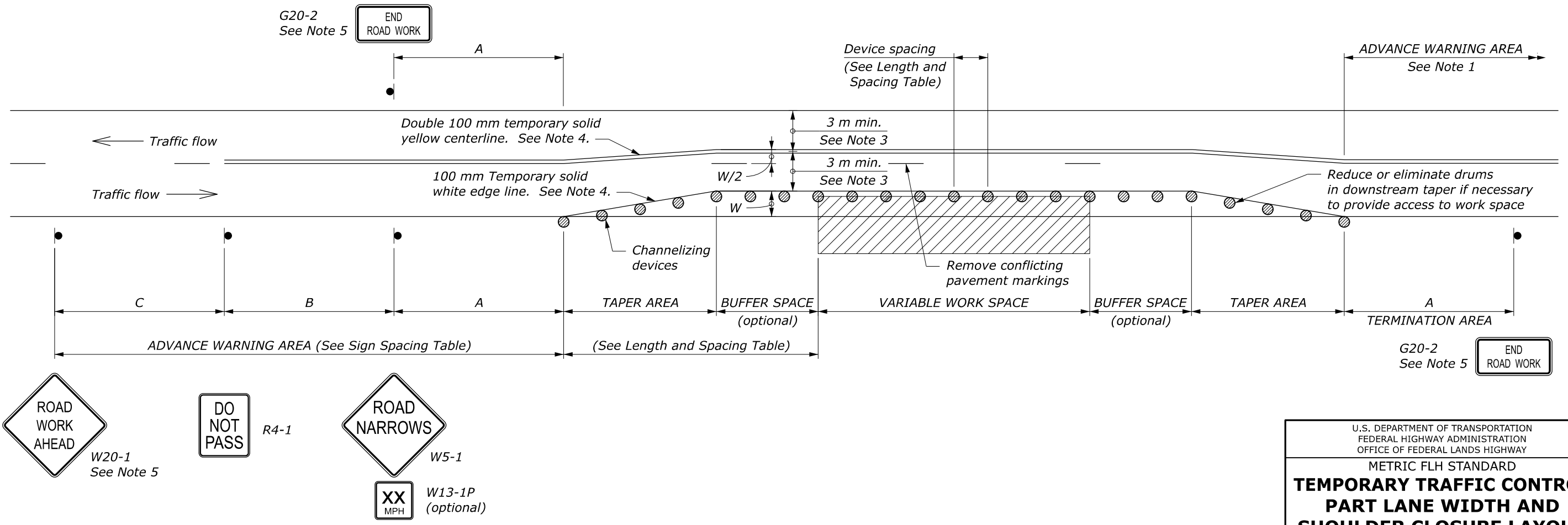
LENGTH AND SPACING TABLE						
APPROACH SPEED*		MINIMUM TAPER LENGTH	BUFFER SPACE LENGTH	CHANNELIZING DEVICE		
				TAPER AREA	BUFFER SPACE	WORK SPACE
MPH	km/h	METER	METER	SPACING IN METERS		
20	30	Shifting taper formula: $L = \frac{WS^2}{310}$ for $S \leq 70$ km/h	35	6	12	12
25	40		45	8	15	15
30	50		60	9	18	18
35	55	$L = \frac{WS}{3.2}$ for $S \geq 70$ km/h	75	11	21	21
40	65		95	12	24	24
45	70		110	14	27	27
50	80	Where: $L =$ Minimum length of taper	130	15	30	30
55	90	$W =$ Width of offset in meters	150	17	34	34
60	95	$S =$ Metric equivalent of posted speed limit or 85 percentile speed prior to work in kilometers per hour	175	18	37	37
65	105		195	20	40	40
70	115		225	21	43	43

SIGN SPACING TABLE			
ROAD TYPE	DISTANCE BETWEEN SIGNS IN METERS		
	A	B	C
Urban and Rural ≤ 50 km/h [≤ 30 MPH]	30	30	30
Urban and Rural 60-80 km/h [35-50 MPH]	100	100	100
Rural greater than 80 km/h [50 MPH]	150	150	150
Expressway / Freeway	300	450	800

NOTE:

1. Signs are shown for one direction of travel only. Place signs similar to those depicted for the opposite direction of travel.
2. Final location and spacing of devices may be changed to fit field conditions as approved by the CO.
3. For project specific minimum width, refer to Special Contract Requirements, Section 156.
4. If the roadway surface is paved, install temporary pavement markings. If nearest no-passing zone is within 120 m, extend markings to connect zones.
5. If closure is completely within the project limits, eliminate the ROAD WORK AHEAD (W20-1) and END ROAD WORK (G20-2) signs.
6. Install PASS WITH CARE sign (R4-2) at ends of no-passing zone if directed by the CO.
7. Do not allow equipment, materials, or vehicles to be parked or stored in the buffer space.

* Approach speed based on the regulatory posted speed, not the advisory speed.



C:\pwwork\dm50753\Std635-11.dgn [Std M635-11] 8 August 2022 3:40 PM

U.S. DEPARTMENT OF TRANSPORTATION
 FEDERAL HIGHWAY ADMINISTRATION
 OFFICE OF FEDERAL LANDS HIGHWAY

METRIC FLH STANDARD

**TEMPORARY TRAFFIC CONTROL
 PART LANE WIDTH AND
 SHOULDER CLOSURE LAYOUT**

STANDARD APPROVED FOR USE 6/2005
 REVISED: 7/2022

STANDARD
 M635-11

NO SCALE