

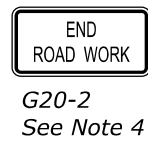
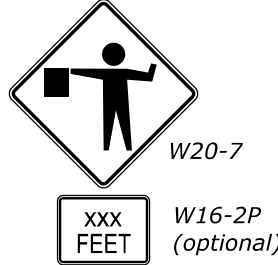
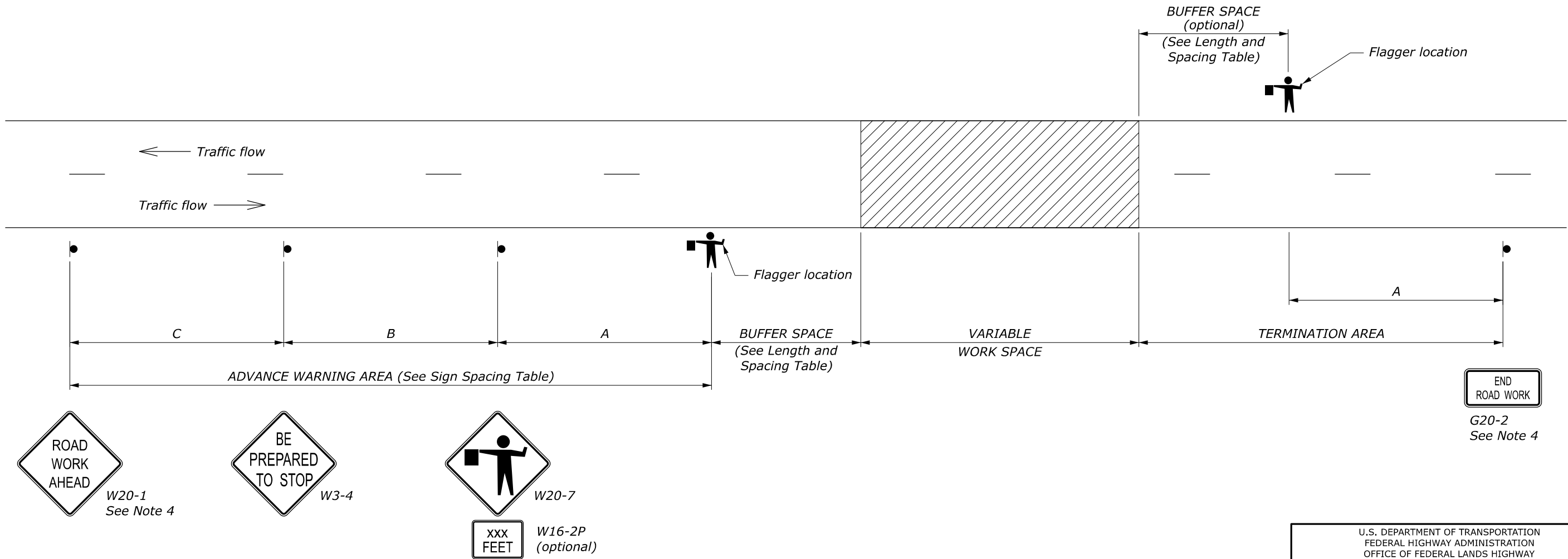
APPROACH SPEED*		BUFFER SPACE LENGTH
MPH	km/h	METER
20	30	35
25	40	45
30	50	60
35	55	75
40	65	95
45	70	110
50	80	130
55	90	150
60	95	175
65	105	195
70	115	225

* Approach speed based on the regulatory posted speed, not the advisory speed.

ROAD TYPE	DISTANCE BETWEEN SIGNS IN METERS		
	A	B	C
Urban and Rural ≤ 50 km/h [≤ 30 MPH]	30	30	30
Urban and Rural 60-80 km/h [35-50 MPH]	100	100	100
Rural greater than 80 km/h [50 MPH]	150	150	150
Expressway / Freeway	300	450	800

NOTE:

1. Signs are shown for one direction of travel only. Place signs similar to those depicted for the opposite direction of travel.
2. Final location and spacing of devices may be changed to fit field conditions as approved by the CO.
3. For pilot car operation, mount the PILOT CAR FOLLOW ME (G20-4) sign at a conspicuous location on the rear of vehicle. Prominently display the name of the Contractor on the pilot car.
4. If closure is completely within the project limits, eliminate the ROAD WORK AHEAD (W20-1) and END ROAD WORK (G20-2) signs.
5. For night time flagging operation, provide floodlighting at flagger stations.
6. Do not allow equipment, materials, or vehicles to be parked or stored in the buffer space.



NO SCALE

U.S. DEPARTMENT OF TRANSPORTATION FEDERAL HIGHWAY ADMINISTRATION OFFICE OF FEDERAL LANDS HIGHWAY	
METRIC FLH STANDARD	
TEMPORARY TRAFFIC CONTROL ROAD CLOSURE LAYOUT (WITH FLAGGERS)	
STANDARD APPROVED FOR USE 6/2005 REVISED: 7/2022	STANDARD M635-5