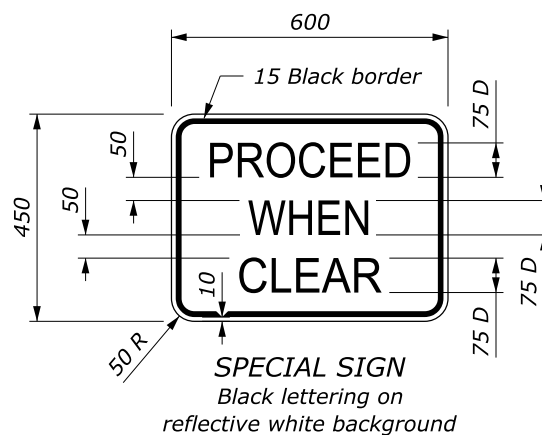


LENGTH AND SPACING TABLE					
APPROACH SPEED*		BUFFER SPACE LENGTH METER	CHANNELIZING DEVICE		
MPH	km/h		TAPER AREA	BUFFER SPACE	WORK SPACE
SPACING IN METERS					
20	30	35	6	12	12
25	40	45	6	15	15
30	50	60	6	18	18
35	55	75	6	21	21
40	65	95	6	24	24
45	70	110	6	27	27
50	80	130	6	30	30
55	90	150	6	34	34
60	95	175	6	37	37
65	105	195	6	40	40
70	115	225	6	43	43

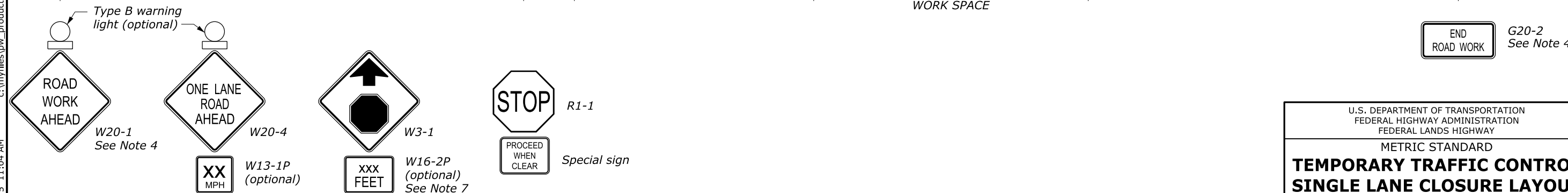
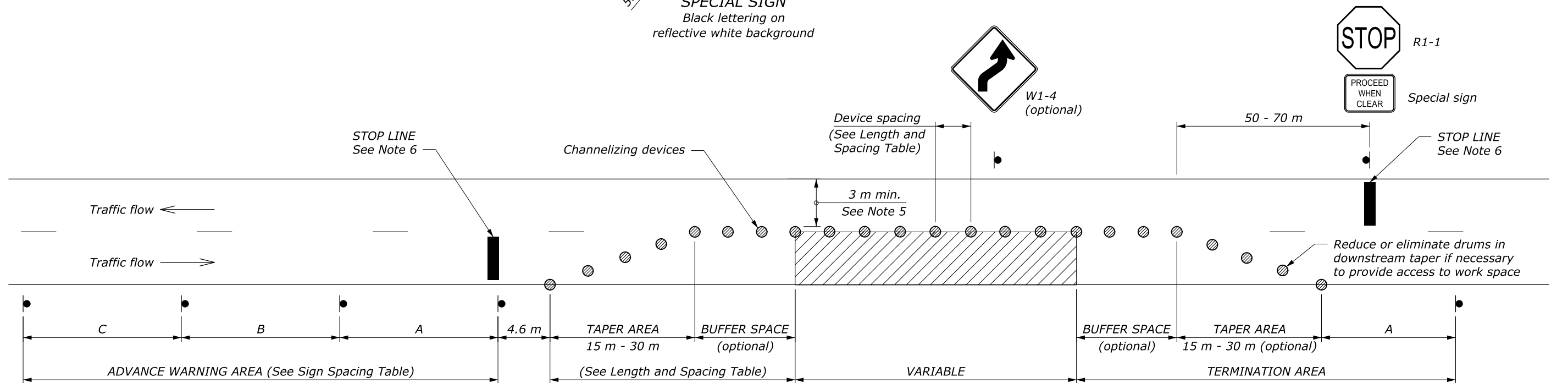
* Approach speed based on the regulatory posted speed, not the advisory speed.

SIGN SPACING TABLE			
ROAD TYPE	DISTANCE BETWEEN SIGNS IN METERS		
	A	B	C
Urban and Rural ≤ 50 km/h [≤ 30 MPH]	30	30	30
Urban and Rural 60-80 km/h [35-50 MPH]	100	100	100
Rural greater than 80 km/h [50 MPH]	150	150	150
Expressway / Freeway	300	450	800



NOTE:

1. Use this layout only if road users from both directions are able to see approaching vehicular traffic through and beyond the work site and have sufficient visibility of approaching vehicles.
2. Advance warning area signs are shown for one direction of travel only. Place devices similar to those depicted for the opposite direction of travel.
3. Final location and spacing of signs and devices may be changed to fit field conditions as approved by the CO.
4. If closure is completely within the project limits, eliminate the "ROAD WORK AHEAD" (W20-1) and "END ROAD WORK" (G20-2) signs.
5. For project specific minimum width, refer to Special Contract Requirements, Section 156.
6. If the roadway surface is paved, install stop lines that comply with Section 3B.16 of the MUTCD.
7. Use the "STOP AHEAD" (W3-1) sign when approach speeds exceed 80 km/h [50 MPH].
8. Do not allow equipment, materials, or vehicles to be parked or stored in the buffer space.
9. Dimensions without units are millimeters.



U.S. DEPARTMENT OF TRANSPORTATION
FEDERAL HIGHWAY ADMINISTRATION
FEDERAL LANDS HIGHWAY

METRIC STANDARD

**TEMPORARY TRAFFIC CONTROL
SINGLE LANE CLOSURE LAYOUT
(WITH STOP SIGN)**

STANDARD APPROVED FOR USE 6/2005	STANDARD M635-8
REVISED: DRAFT: 8/2013	

NO SCALE