

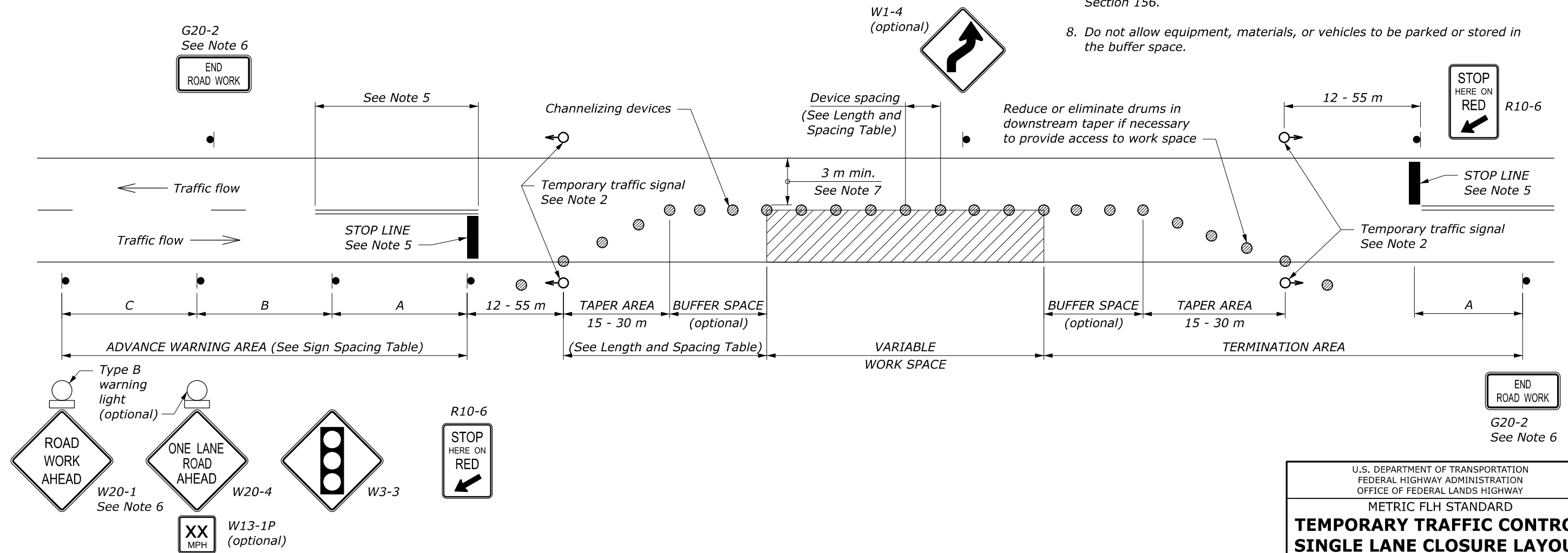
LENGTH AND SPACING TABLE					
APPROACH SPEED*		BUFFER SPACE LENGTH	CHANNELIZING DEVICE		
MPH	km/h		TAPER AREA	BUFFER SPACE	WORK SPACE
20	30	35	6	12	12
25	40	45	6	15	15
30	50	60	6	18	18
35	55	75	6	21	21
40	65	95	6	24	24
45	70	110	6	27	27
50	80	130	6	30	30
55	90	150	6	34	34
60	95	175	6	37	37
65	105	195	6	40	40
70	115	225	6	43	43

* Approach speed based on the regulatory posted speed, not the advisory speed.

ROAD TYPE	DISTANCE BETWEEN SIGNS IN METERS		
	A	B	C
Urban and Rural ≤ 50 km/h [≤ 30 MPH]	30	30	30
Urban and Rural 60-80 km/h [35-50 MPH]	100	100	100
Rural greater than 80 km/h [50 MPH]	150	150	150
Expressway / Freeway	300	450	800

NOTE:

1. Signs are shown for one direction of travel only. Place signs similar to those depicted for the opposite direction of travel.
2. A single signal installation is acceptable, on the right-hand side of the road, if it has two signal faces that are at least 2.4 m apart and meets the other requirements of Part 4 of the MUTCD.
3. Install and operate temporary traffic control signals in accordance with the requirements of Part 4 of the MUTCD. Establish signal timing using a qualified engineer. When the signal is changed to the flashing mode either manually or automatically, ensure red signal indications are flashed to both approaches.
4. Final location and spacing of devices may be changed to fit field conditions as approved by the CO. If signals are moved, determine revised signal timing using a qualified engineer.
5. For paved roadway surfaces, install stop lines complying with MUTCD Section 3B.16. Remove existing conflicting pavement markings and raised markers between the work space and the stop line. Add no-passing lines in advance of the stop line that comply with MUTCD Section 3B.02. Removeable pavement markings may be used for stop lines and no-passing pavement markings.
6. If closure is completely within the project limits, eliminate the ROAD WORK AHEAD (W20-1) and END ROAD WORK (G20-2) signs.
7. For project specific minimum width, refer to Special Contract Requirements, Section 156.
8. Do not allow equipment, materials, or vehicles to be parked or stored in the buffer space.



U.S. DEPARTMENT OF TRANSPORTATION
 FEDERAL HIGHWAY ADMINISTRATION
 OFFICE OF FEDERAL LANDS HIGHWAY

METRIC FLH STANDARD

**TEMPORARY TRAFFIC CONTROL
 SINGLE LANE CLOSURE LAYOUT
 (WITH SIGNALS)**

STANDARD APPROVED FOR USE 6/2005
 REVISED: 7/2022

STANDARD
 M635-9

NO SCALE