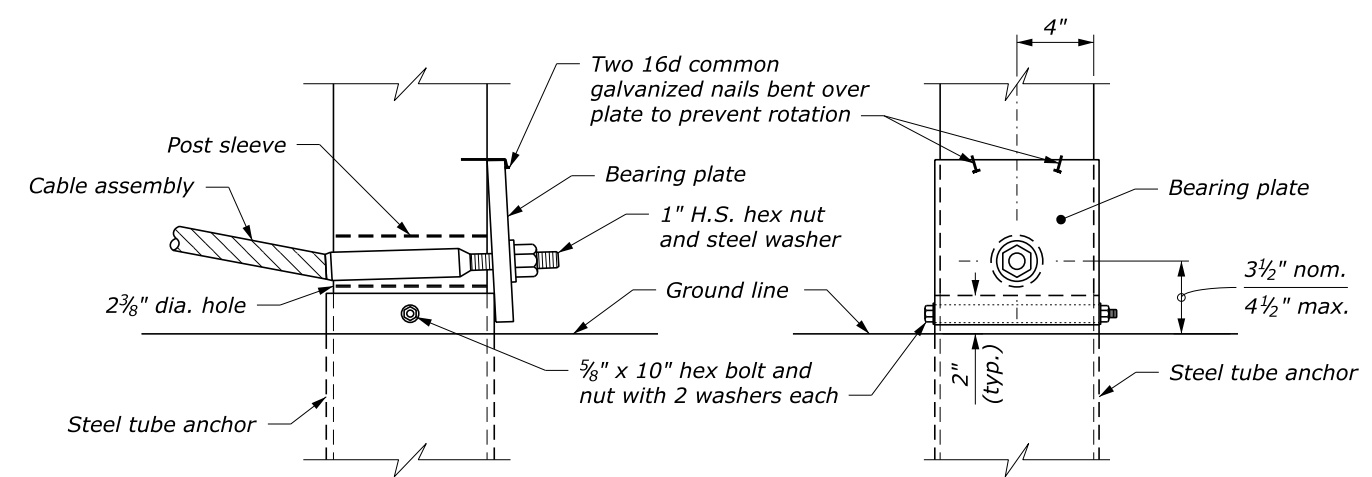
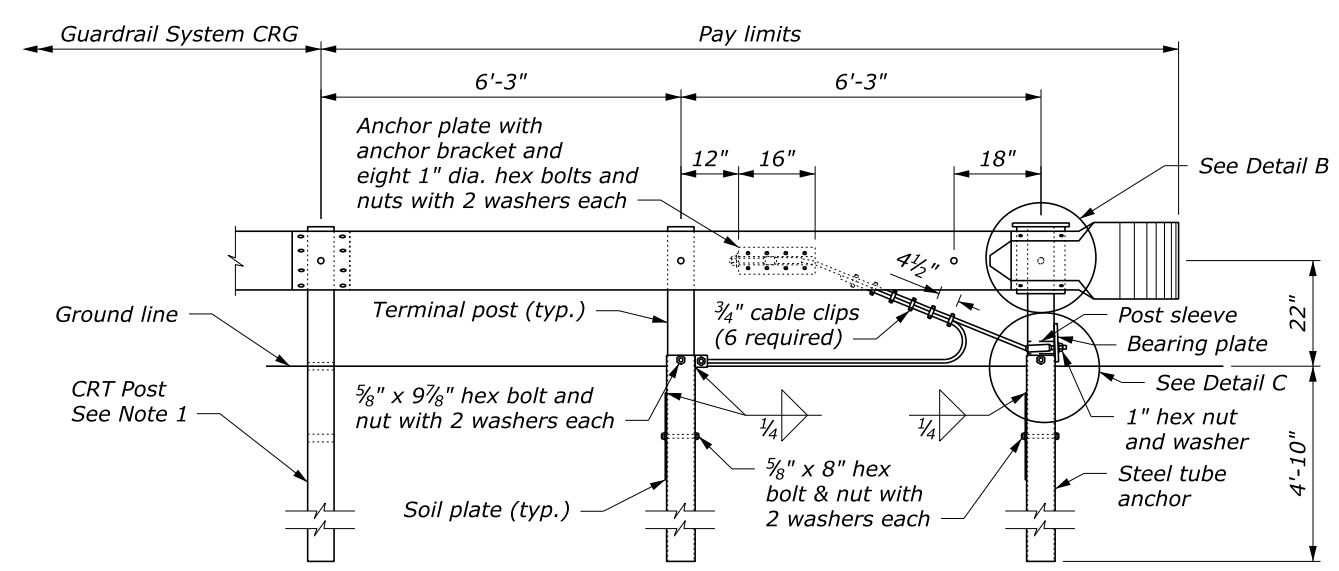
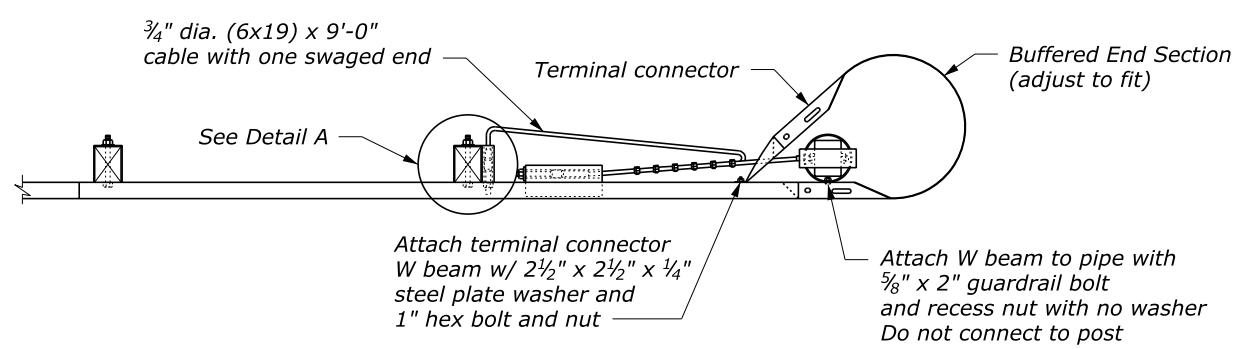


BUFFERED END SECTION

NOTE:

- See Details C617-21 and C617-23 for other details.
- Dimensional tolerances not shown or implied are intended to be those consistent with the proper functioning of the part, including its appearance, and accepted manufacturing practices.



DETAIL C POST ASSEMBLY

NO SCALE

U.S. DEPARTMENT OF TRANSPORTATION FEDERAL HIGHWAY ADMINISTRATION CENTRAL FEDERAL LANDS HIGHWAY DIVISION	
U.S. CUSTOMARY DETAIL G4 W-BEAM GUARDRAIL CABLE RELEASING TERMINAL TYPE G4-CRT	
DETAIL APPROVED FOR USE 04/2020	DETAIL
REVISED:	C617-22

\$\$\$DATE\$\$\$
 \$\$\$TIME\$\$\$
 \$\$\$DGN\$\$\$
 \$\$\$USER\$\$\$

NOTES TO THE DESIGNER
Last Updated: April 2020

G4 W-Beam Guardrail, Cable Releasing Terminal

Type CRT, Wood Posts

General Information

Appropriate Applications.

- The CRT is described in FHWA Technical Advisory T5040.32.
- The CRT has not been crash tested as a guardrail terminal, and its use is limited to low-speed, low-volume roadways with a stop condition, such as driveways or service roads. For most intersecting public highways, the curved guardrail installation should be terminated with a crashworthy terminal.

Crash Test Criteria	None
Test Level	None
FHWA Eligibility Letter	FHWA Technical Advisory T5040.32
TF 13 Designator	Not posted
Crash Test Report	None



Cable releasing terminal

Limitations

- Low-speed, low-volume roadways (such as driveways or service roads) only.

Layout Guidance.

- See AASHTO *Roadside Design Guide*, Section 5.6.6.

Applicable SCRs

- Section 563 (if weathering agent applied to galvanized elements)
- Section 617
- Section 710
- Section 725 (if weathering agent applied to galvanized elements)

Typical Pay Item Used

- 61702-0400 Terminal section, type G4-CRT [EA]

Updates

February 2019

- New Detail drawing

April 2020

- Revised drawing title to match pay item description