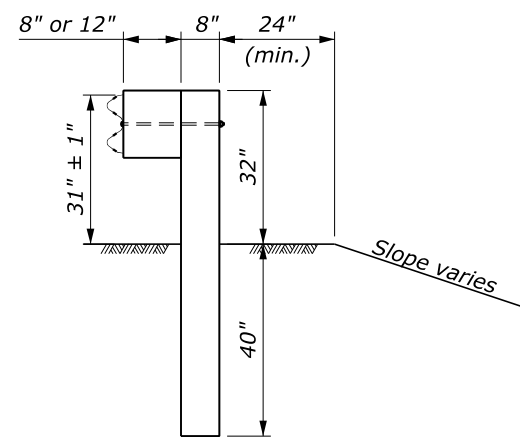
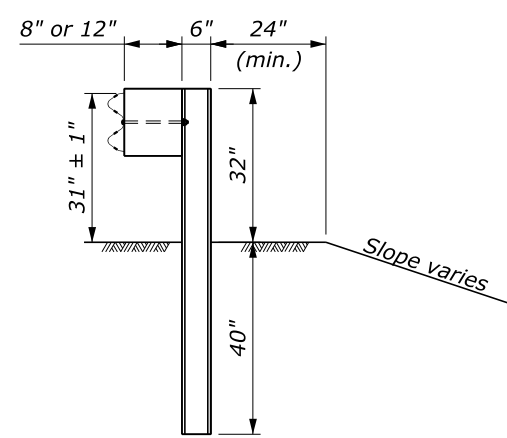


NOTE:

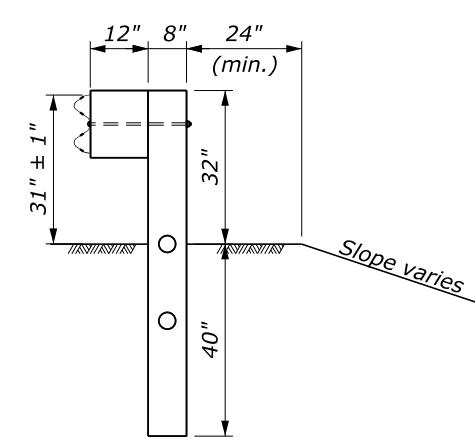
- Posts ① and ⑧ may be wood or steel.
- Use wood posts for CRT posts.
- The minimum length of guardrail, including the end terminals, upstream and downstream of posts ② and ⑦ is 62.5 feet.
- In locations where the culvert headwall extends above the finished grade to act as a vertical roadway curb, the maximum height of the culvert headwall above the finished grade is 2 inches.
- See Details C617-31 or C617-32 for other assembly details.



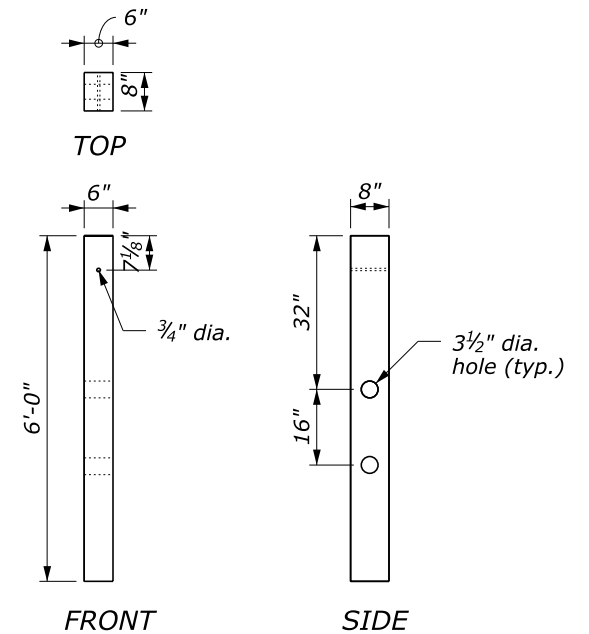
WOOD POST DETAIL
POST ① AND ⑧
See Note 1



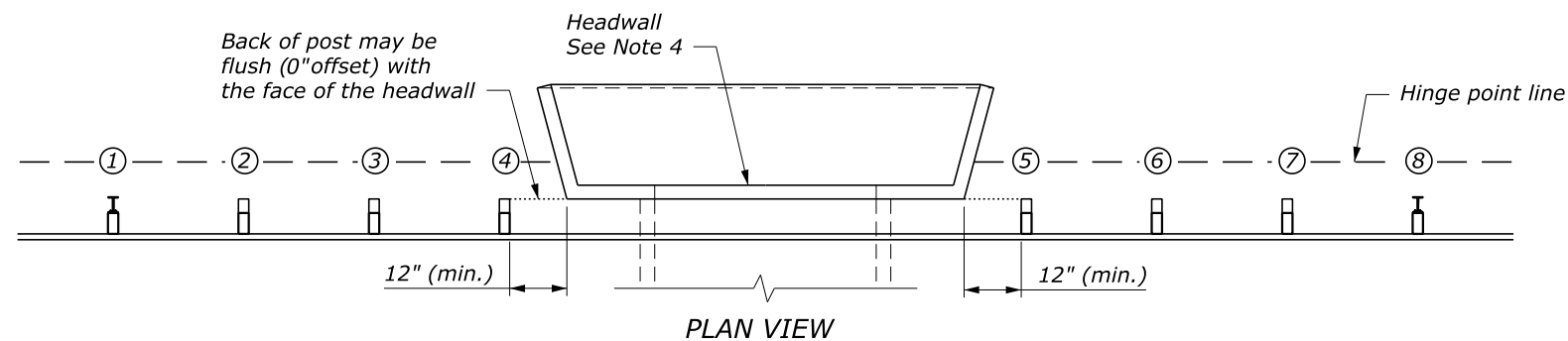
STEEL POST DETAIL
POST ① AND ⑧
See Note 1



CRT POST DETAIL
POST ② THRU ⑦
See Note 2



CRT WOOD POST



SPAN WITH HEADWALL DETAIL

NO SCALE

U.S. DEPARTMENT OF TRANSPORTATION FEDERAL HIGHWAY ADMINISTRATION CENTRAL FEDERAL LANDS HIGHWAY DIVISION	
U.S. CUSTOMARY DETAIL	
MGS W-BEAM GUARDRAIL LONG-SPAN SYSTEM	
DETAIL APPROVED FOR USE 04/2020	DETAIL
REVISED:	C617-37

\$\$\$DATE\$\$\$
 \$\$\$TIME\$\$\$
 \$\$\$DGN\$\$\$
 \$\$\$USER\$\$\$

NOTES TO THE DESIGNER
Last Updated: April 2020

MGS W-Beam Guardrail Long-Span System

General Information

Appropriate Applications.

- Long-span guardrail systems are used to span low-fill culverts. This drawing may also be used if an impenetrable object is encountered at post locations during construction.

Crash Test Criteria	MASH
Test Level	TL-3
FHWA Eligibility Letter	B-189, B-133, B-211A
TF 13 Designator	SGR20a-b, SGR38a-e
Crash Test Report	MwRSF Report No TRP-03-187-07



From MwRSF website
<https://mwrsf.unl.edu/mgs.php>

Limitations

- The maximum span is 25 feet.

Layout Guidance.

- See AASHTO *Roadside Design Guide* Section 5.4.2
- See the FLH *Midwest Guardrail System FAQ* document for more information.

Applicable SCRs

- Section 563 (if weathering agent applied to galvanized elements)
- Section 617
- Section 710
- Section 725 (if weathering agent applied to galvanized elements)

Typical Pay Item Used

- 61701-4550 Guardrail system MGS, type 2, class A wood posts [LNFT] for galvanized steel
- 61701-5150 Guardrail system MGS, type 4, class B wood posts [LNFT] for weathering steel

Note: long-span systems are paid for using the same pay item as roadside rail.

Updates

February 2019

- New Detail drawing

April 2020

- CADD edits