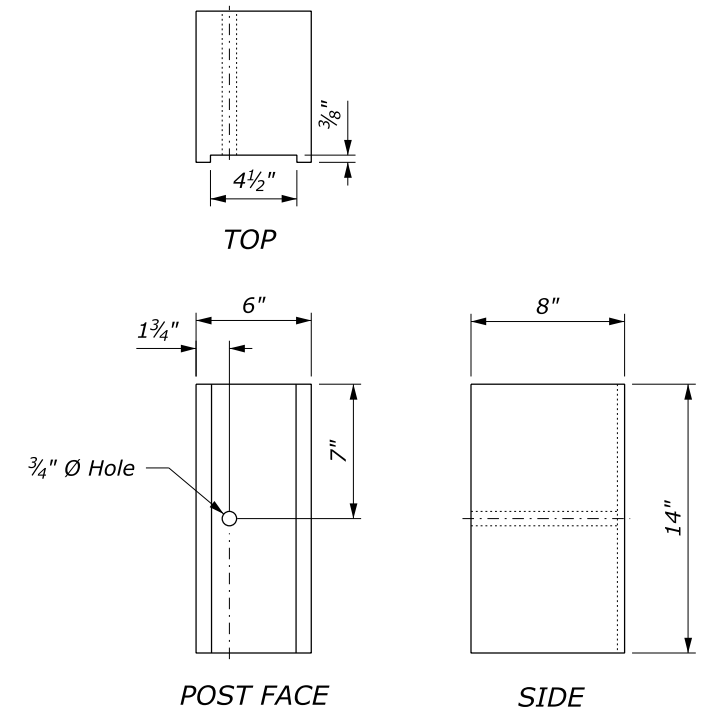
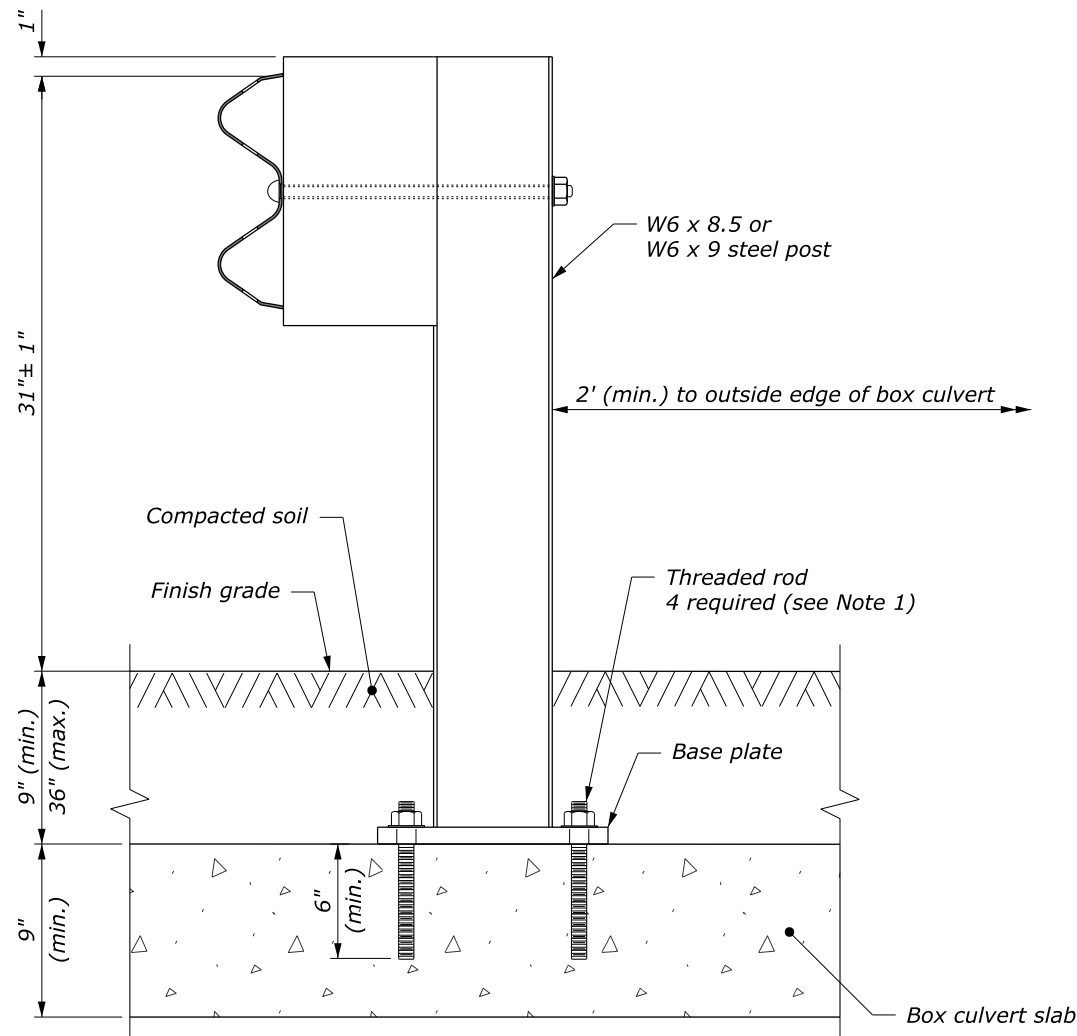
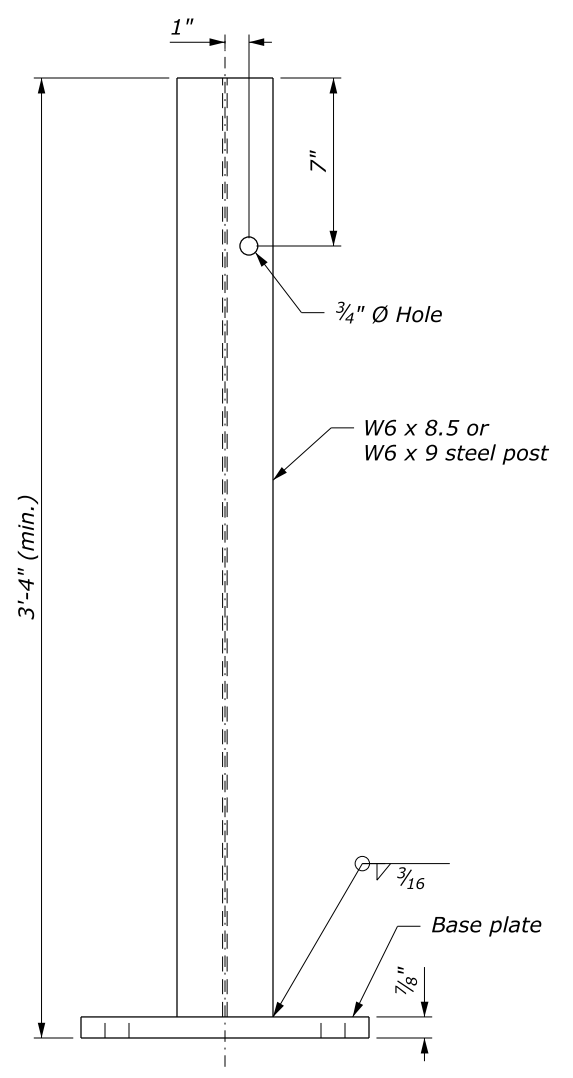


- NOTE:**
1. Attach guardrail post to box culvert with 7/8-inch diameter high-strength threaded rods 8 1/2-inch in length with resin-bonded anchors. Use carbon steel rods with a minimum strength of 125 ksi and a minimum yield strength of 105 ksi. Rods, nuts, and washers have an electroplated zinc coating.
 2. Wood blocks are shown. Blocks of an approved alternative may be used.
 3. See Detail C617-32 for other details.



BLOCK
See Note 2

NO SCALE

U.S. DEPARTMENT OF TRANSPORTATION FEDERAL HIGHWAY ADMINISTRATION CENTRAL FEDERAL LANDS HIGHWAY DIVISION	
U.S. CUSTOMARY DETAIL MGS W-BEAM GUARDRAIL STEEL POSTS ATTACHED TO BOX CULVERT	
DETAIL APPROVED FOR USE 02/2019	DETAIL
REVISED:	C617-38

NOTES TO THE DESIGNER
 Last Updated: February 2019

MGS W-Beam Guardrail Steel Posts Attached to Box Culvert

General Information

Appropriate Applications.

- This drawing is used with box culverts with shallow fill.

<i>Crash Test Criteria</i>	MASH
<i>Test Level</i>	TL-3
<i>FHWA Eligibility Letter</i>	B-241
<i>TF 13 Designator</i>	SBW09c
<i>Crash Test Report</i>	TTI Report No. 405160-23-2



From TTI Report No. 405160-23-2

Limitations

- Embankment over culvert ranges from 9" (min.) to 3' (max.).

Layout Guidance.

- See the FLH *Midwest Guardrail System FAQ* document for more information.

Applicable SCRs

- Section 563 (if weathering agent applied to galvanized elements)
- Section 617
- Section 710
- Section 725 (if weathering agent applied to galvanized elements)

Typical Pay Item Used

- 61701-4500 Guardrail system MGS, type 2, class A steel posts [LNFT] for galvanized steel
- 61701-5100 Guardrail system MGS, type 4, class B steel posts [LNFT] for weathering steel

Note: Use the same pay item as roadside rail.

Updates

February 2019

- New Detail drawing