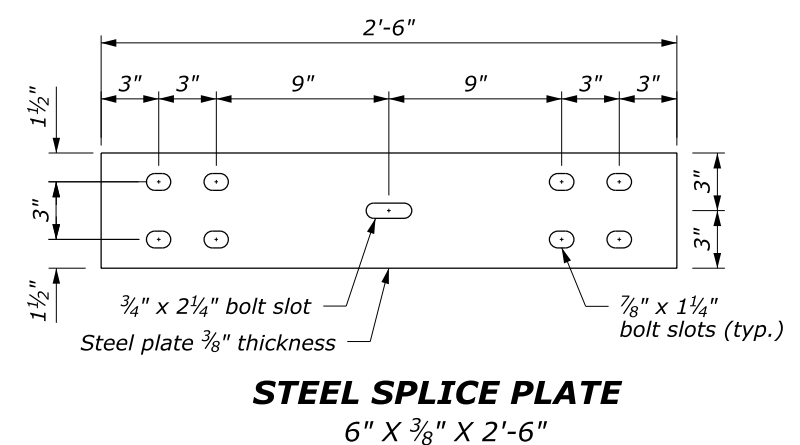
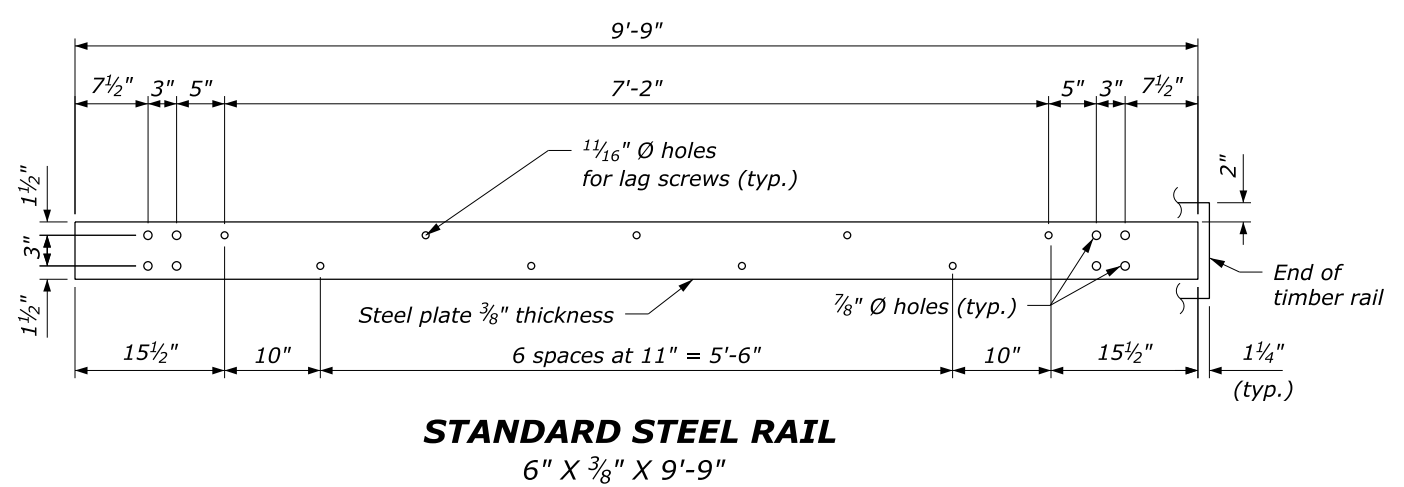
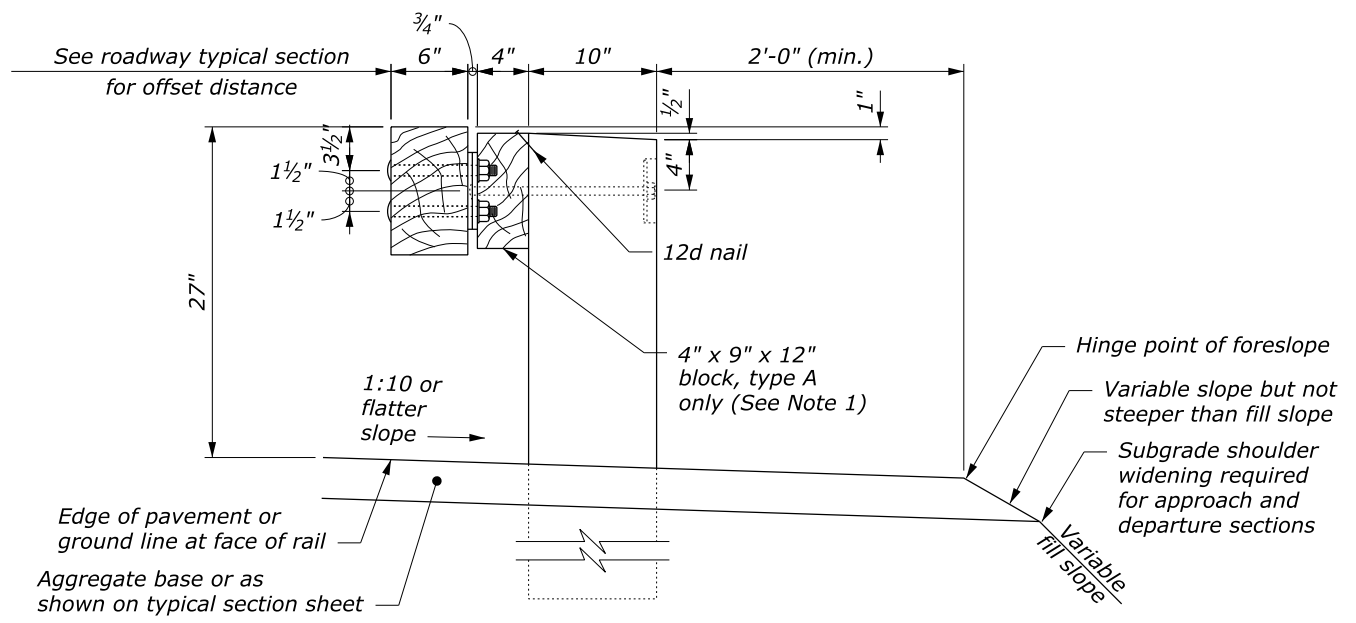
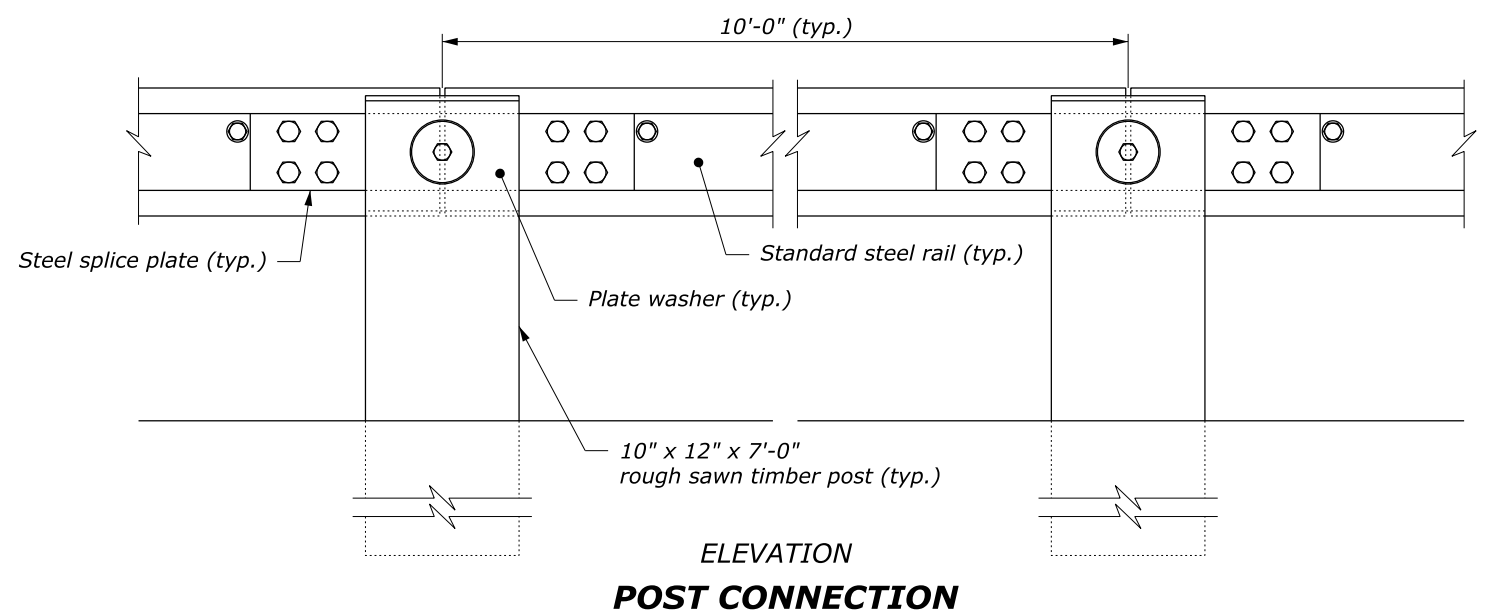


- NOTE:**
1. Use the type A, blocked-out system or the type B, non-blocked-out system as specified in the plans. Use Type B only on low speed roadways (45 mph or less).
 2. Use weathering steel for all structural steel and fastener hardware.
 3. Provide a bevelled cut according to Detail C617-69 wherever rail terminates at TL-2 end terminals.



U.S. DEPARTMENT OF TRANSPORTATION
 FEDERAL HIGHWAY ADMINISTRATION
 CENTRAL FEDERAL LANDS HIGHWAY DIVISION

U.S. CUSTOMARY DETAIL
**STEEL-BACKED TIMBER
 GUARDRAIL
 TYPE A & TYPE B**

DETAIL APPROVED FOR USE 02/2019
 REVISIONS: _____

DETAIL
 C617-60

21 February 2019 2:41 PM N:\CFL-DPIT\Black\Section617DrawingUpdates\Details\C617-60.dgn [USC]

NO SCALE

NOTES TO THE DESIGNER
Last Updated: February 2019

Steel-Backed Timber Guardrail Type A & Type B Wood Post

General Information

Appropriate Applications.

- Steel-backed timber guardrail is an aesthetic roadside barrier. The all-wood appearance blends into the surrounding environment.

Crash Test Criteria	NCHRP Report 350
Test Level	TL-3
FHWA Eligibility Letter	B-64D2
TF 13 Designator	None
Crash Test Report	TTI Report No. 405181-F

Limitations. Need additional embankment width to accommodate width of guardrail installation. Steel-backed timber tends to be more expensive than traditional w-beam guardrail.

Layout Guidance.

- See AASHTO *Roadside Design Guide*
- Use the FLH Barrier Length of Need Calculator available at <https://flh.fhwa.dot.gov/resources/design/tools/Barrier-LON.xlsx>



Type A steel-backed timber guardrail

Applicable SCRs

Section 617

Typical Pay Item Used

- 61701-3900 Guardrail system SBTA [LNFT]
- 61701-4000 Guardrail system SBTB [LNFT]

Updates

February 2019

- New Detail drawing