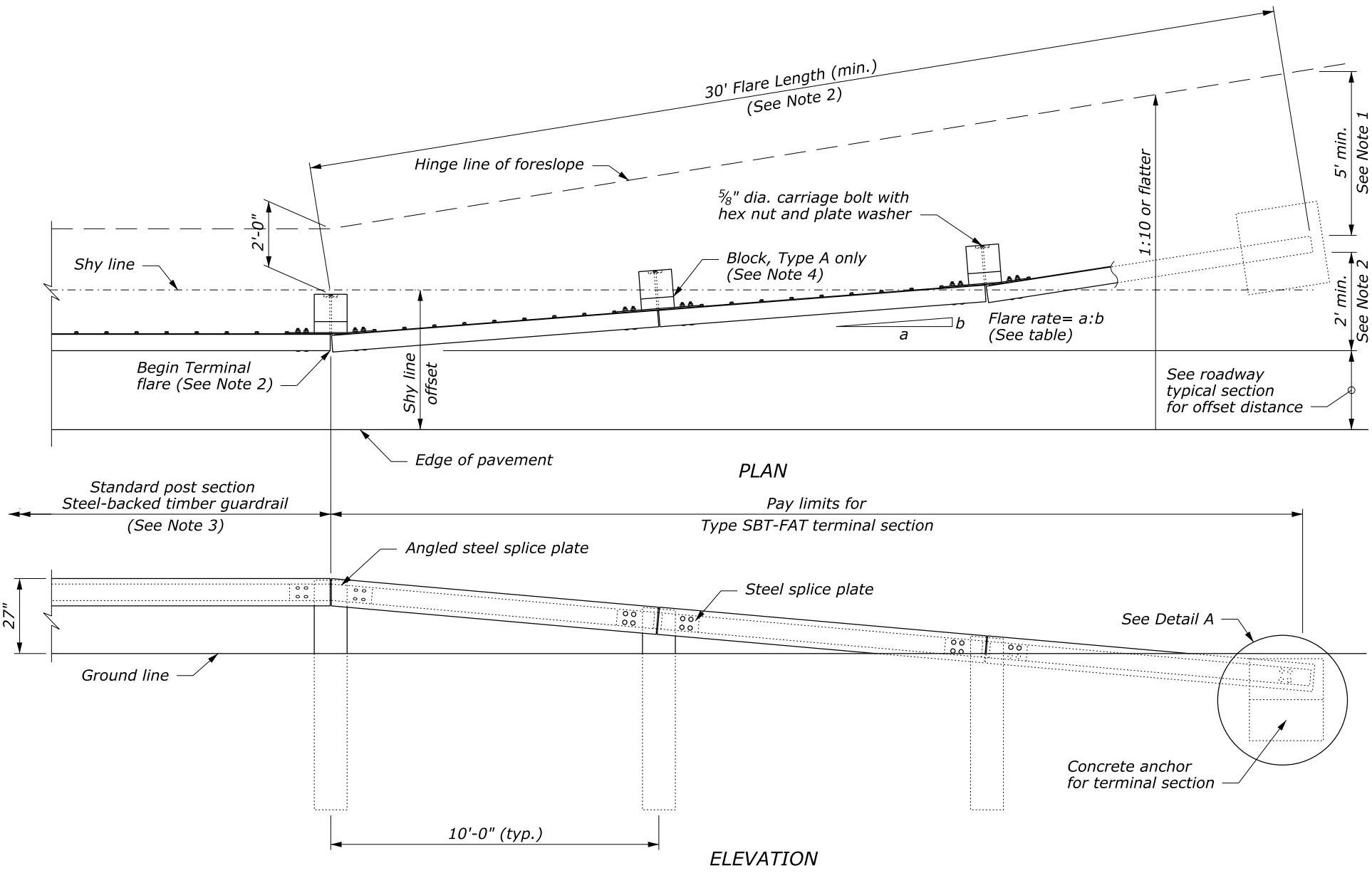


User: Angela.Johnson_
 N:\CFL-DPTT\Black\Section617DrawingUpdates\Details\C617-61.dgn
 7:21:14 AM
 2/25/2019

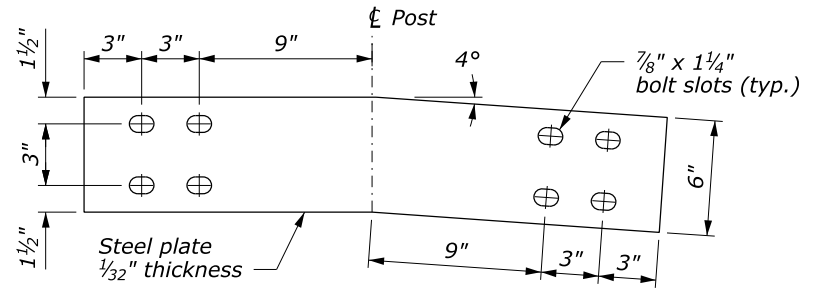


APPROACH & DEPARTURE FLARE WITH FLARED ANCHOR TERMINAL (FAT)

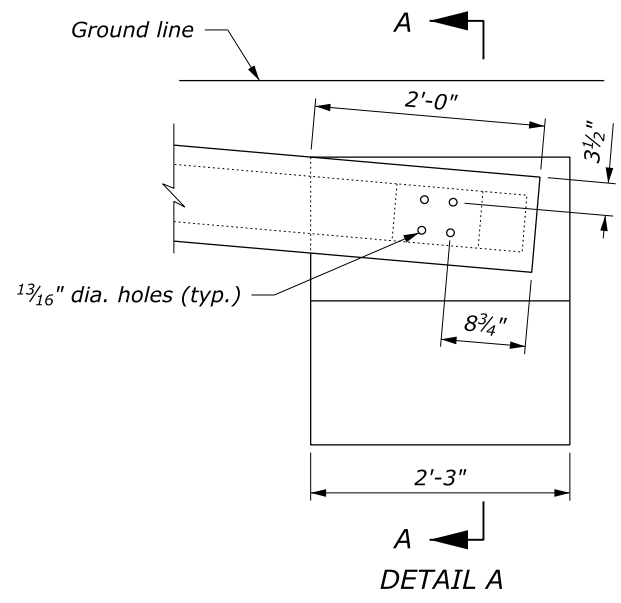
NOTE:

1. Extend the fill widening a minimum of 5 feet behind the guardrail, unless otherwise directed by the CO.
2. The guardrail flare shown in the plan view is the minimum length and rate required. As directed by the CO, flare the guardrail so that the terminal section is outside the clear zone. If the terminal section cannot be located outside the clear zone, it should be flared as far as practical from the road at the maximum rate indicated on the Guardrail Flare Rates table.
3. See Detail C617-60 for timber, structural steel, and hardware details.
4. On the Type A, blocked-out guardrail, include the blocks in terminal section, except on the concrete anchor. For the Type B, non-blocked-out guardrail, no blocks are included.

Design Speed (mph)	Shy line offset (ft)	Flare rate inside shy line (a:b)	Flare rate outside shy line (a:b)
60	8.0	26:1	14:1
50	6.5	21:1	11:1
40	5.0	16:1	8:1
30 and less	4.0	13:1	7:1

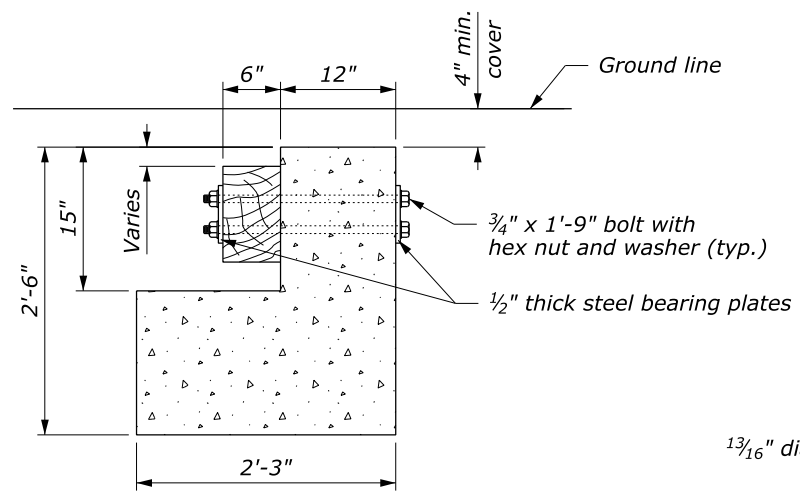


ANGLED STEEL SPLICE PLATE

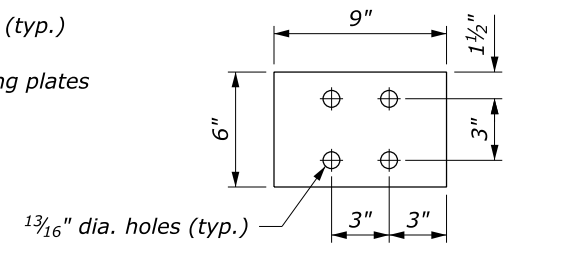


DETAIL A

CONCRETE ANCHOR



SECTION A-A



STEEL BEARING PLATE

U.S. DEPARTMENT OF TRANSPORTATION
 FEDERAL HIGHWAY ADMINISTRATION
 CENTRAL FEDERAL LANDS HIGHWAY DIVISION

 U.S. CUSTOMARY DETAIL
**STEEL-BACKED TIMBER GUARDRAIL
 TERMINAL SECTION
 TYPE SBT-FAT**

DETAIL APPROVED FOR USE 02/2019	DETAIL
REVISED:	C617-61

NO SCALE

NOTES TO THE DESIGNER
Last Updated: February 2019

Steel-Backed Timber Guardrail Terminal Section Type SBT-FAT

General Information

Appropriate Applications.

- Steel-backed timber (SBT) guardrail is an aesthetic roadside barrier. This terminal provides an anchor to the SBT system.

Crash Test Criteria	None
Test Level	None
FHWA Eligibility Letter	None
TF 13 Designator	Not posted
Crash Test Report	None

Limitations. Need to flare the terminal outside the clear zone since this is a non-crashworthy terminal.

Layout Guidance.

- See AASHTO *Roadside Design Guide*
- Use the FLH Barrier Length of Need Calculator available at <https://flh.fhwa.dot.gov/resources/design/tools/Barrier-LON.xlsx>

Applicable SCRs

None

Typical Pay Item Used

- 61702-0510 Terminal section, type SBT-FAT [EA]

Updates

February 2019

- New Detail drawing