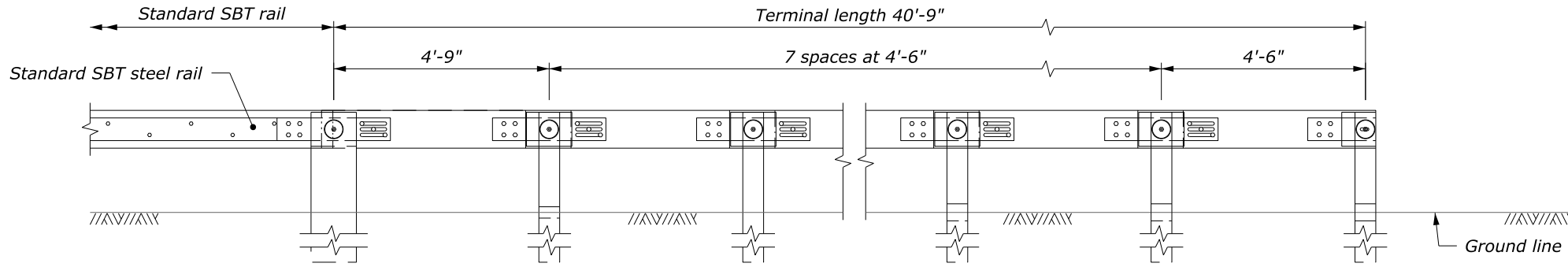
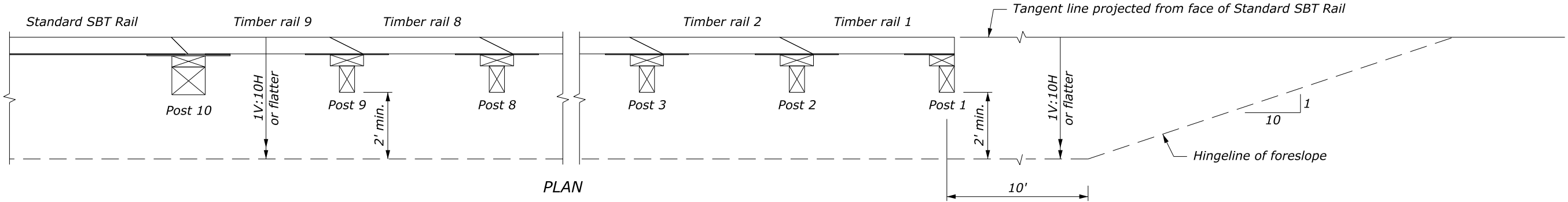


STATE	PROJECT	SHEET NUMBER

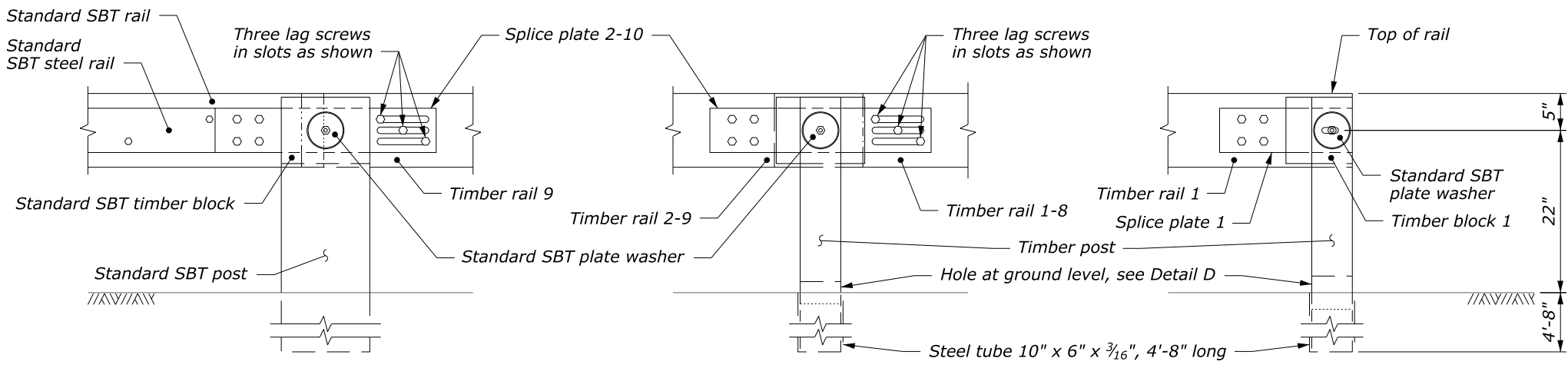


ELEVATION

NOTE:
 1. See Detail C617-60 for standard SBT guardrail details.
 2. Use weathering steel for all structural steel and fastener hardware.



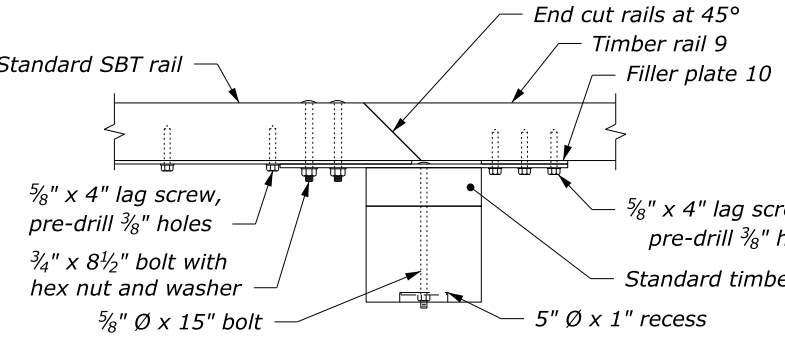
PLAN



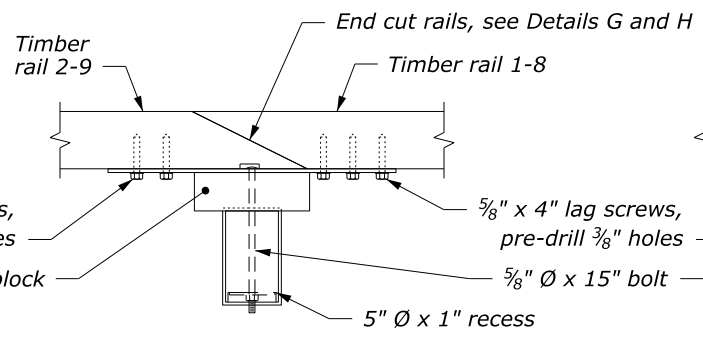
ELEVATION

ELEVATION

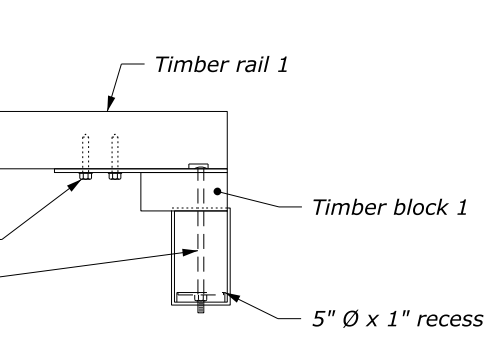
ELEVATION



POST/RAIL CONNECTION AT POST 10
DETAIL A



POST/RAIL CONNECTION AT POSTS 2-9
DETAIL B



POST/RAIL CONNECTION AT POST 1
DETAIL C

U.S. DEPARTMENT OF TRANSPORTATION
 FEDERAL HIGHWAY ADMINISTRATION
 CENTRAL FEDERAL LANDS HIGHWAY DIVISION

U.S. CUSTOMARY DETAIL
TL-2 END TERMINAL FOR STEEL-BACKED TIMBER GUARDRAIL
 Sheet 1 of 2

DETAIL APPROVED FOR USE 02/2019

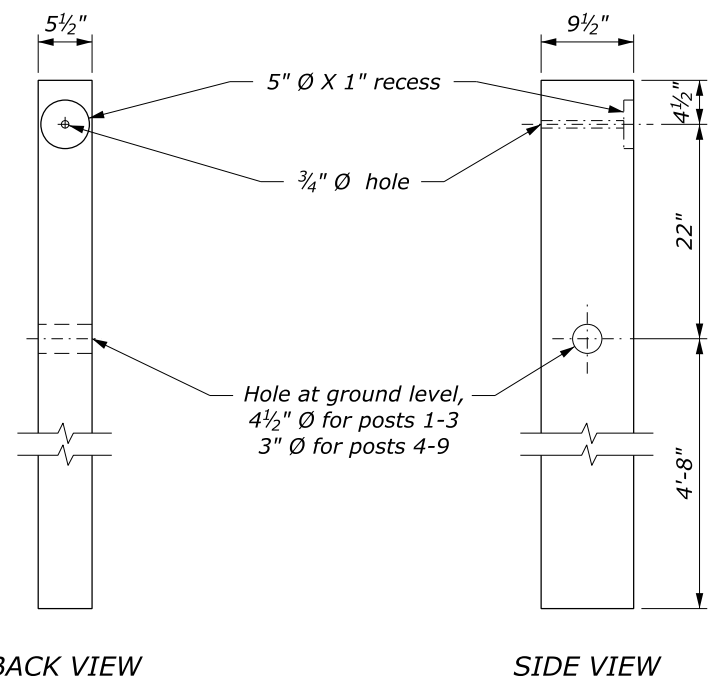
REVISOR: _____

NO SCALE

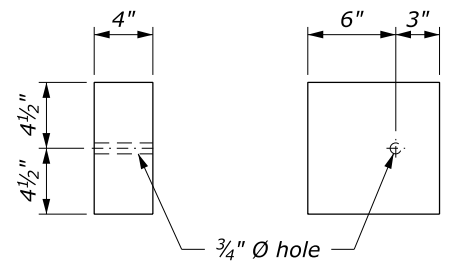
DETAIL C617-69

User: Angela.Johnson_ 10:44:29 AM N:\CFL-DPTT\Black\Section617DrawingUpdates\Details\C617-69.dgn 2/25/2019

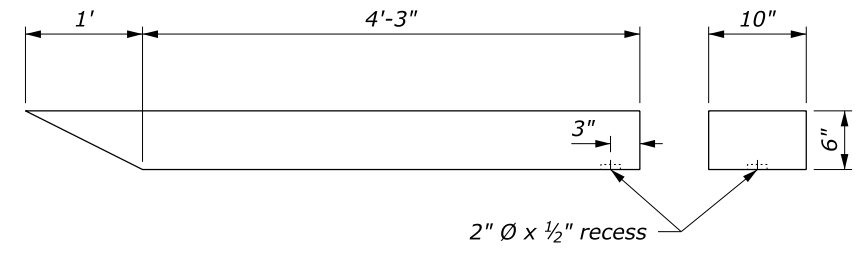
User: Angela.Johnson_



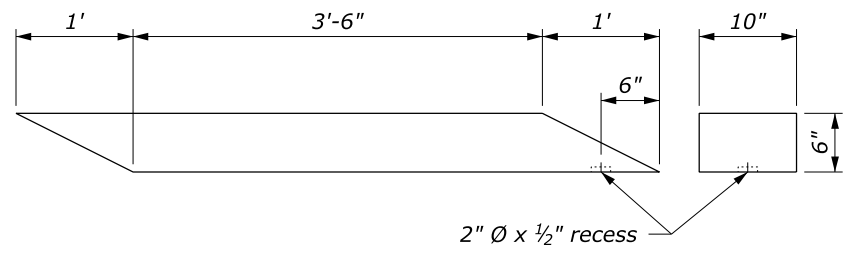
TIMBER POSTS 1 - 9
DETAIL D



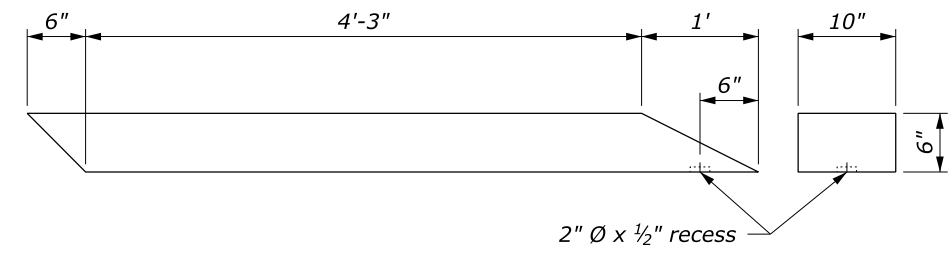
TIMBER BLOCK 1
DETAIL E



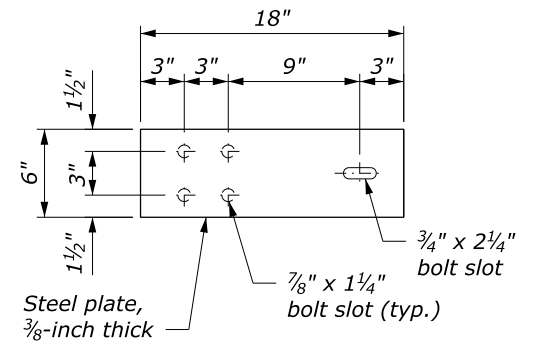
TIMBER RAIL 1
DETAIL F



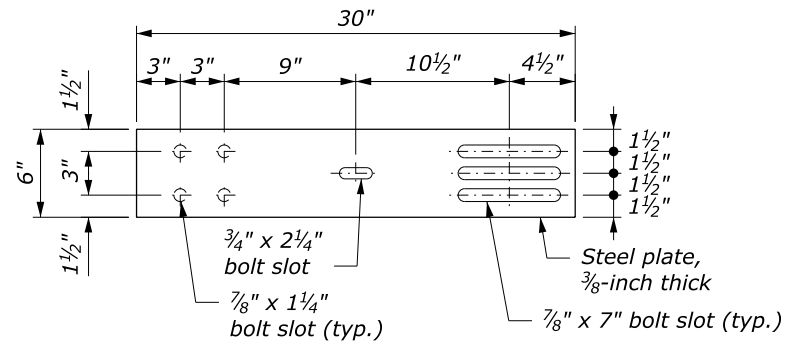
TIMBER RAILS 2-8
DETAIL G



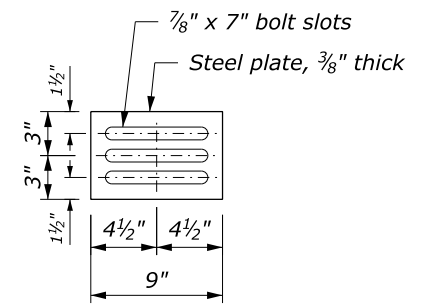
TIMBER RAIL 9
DETAIL H



SPLICE PLATE 1
DETAIL I



SPLICE PLATE 2-10
DETAIL J



FILLER PLATE 10
DETAIL K

10:46:27 AM N:\CFL-DPT\Black\Section617DrawingUpdates\Details\C617-69.dgn

2/25/2019

NO SCALE

U.S. DEPARTMENT OF TRANSPORTATION FEDERAL HIGHWAY ADMINISTRATION CENTRAL FEDERAL LANDS HIGHWAY DIVISION	
U.S. CUSTOMARY DETAIL TL-2 END TERMINAL FOR STEEL-BACKED TIMBER GUARDRAIL Sheet 2 of 2	
REVISIONS:	DETAIL C617-69
DETAIL APPROVED FOR USE 02/2019	

NOTES TO THE DESIGNER
Last Updated: February 2019

TL-2 End Terminal for Steel-backed Timber Guardrail

General Information

Appropriate Applications.

- Steel-backed timber (SBT) guardrail is an aesthetic roadside barrier. This drawing provides a low-speed, crashworthy end terminal for SBT.

Crash Test Criteria	NCHRP 350
Test Level	TL-2
FHWA Eligibility Letter	CC-116
TF 13 Designator	SED01
Crash Test Report	NCAC 010-R-003

Limitations. This terminal is for low-speed roadways.

Layout Guidance. The length of need starts at post #3.

Applicable SCRs

None

Typical Pay Item Used

- 61702-1400 Terminal section, type SBT tangent [EA]

Updates

February 2019

- New Detail drawing