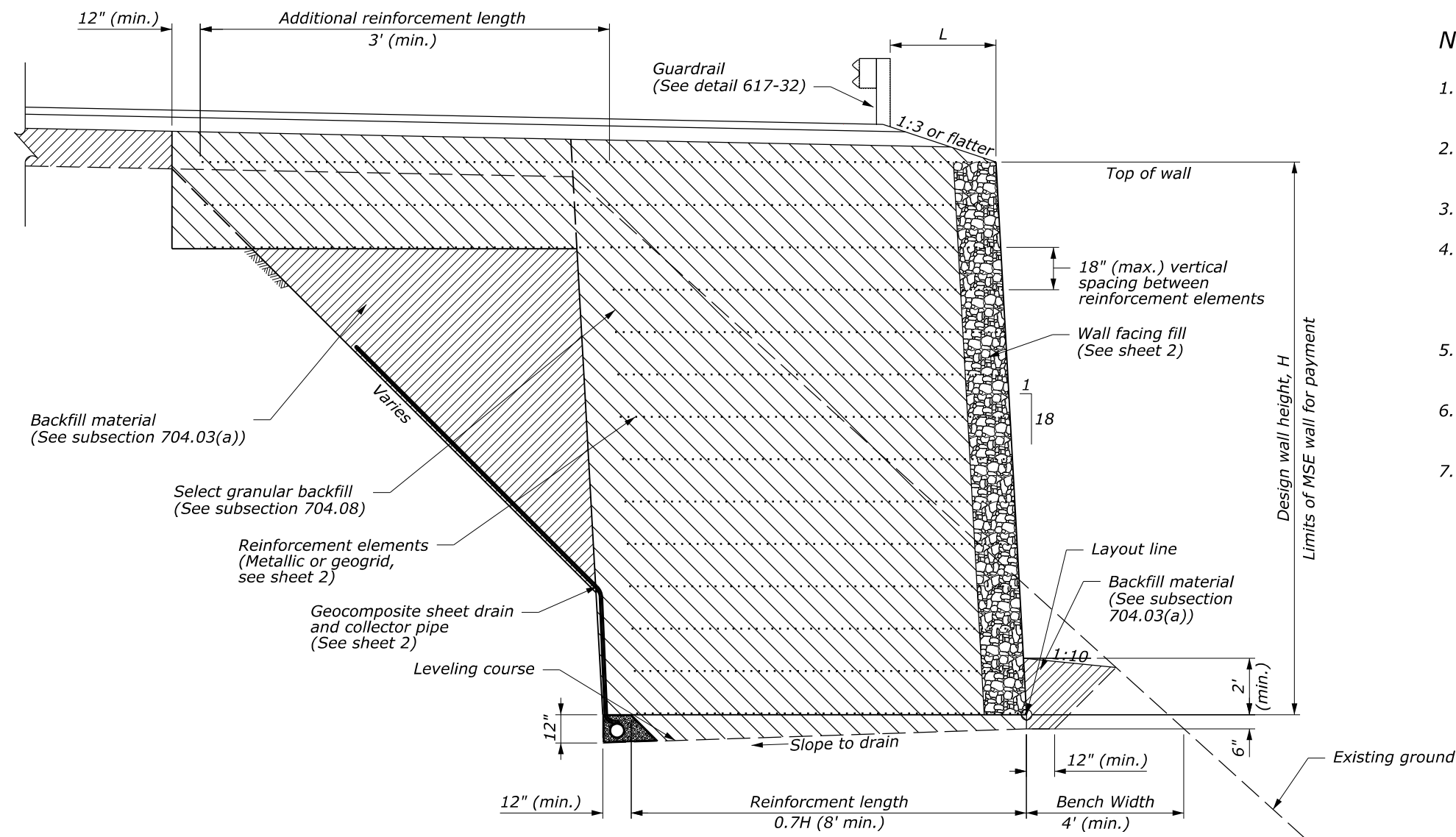


STATE	PROJECT	SHEET NUMBER
ST	PROJECT NUMBER PROJECT NAME	

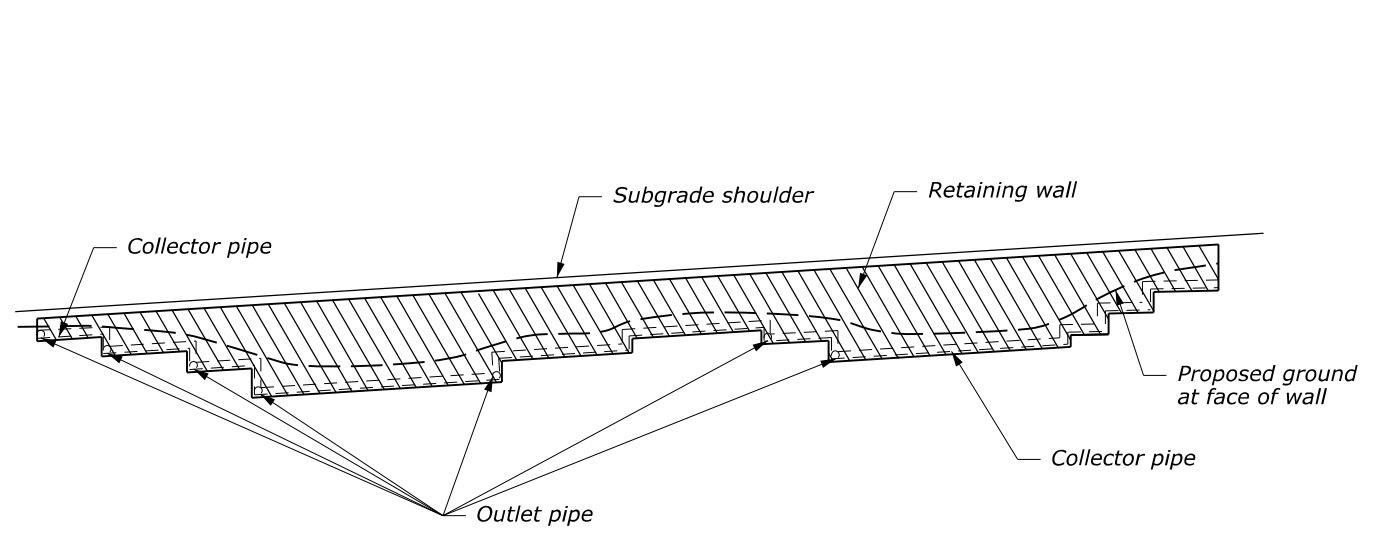


**TYPICAL SECTION**

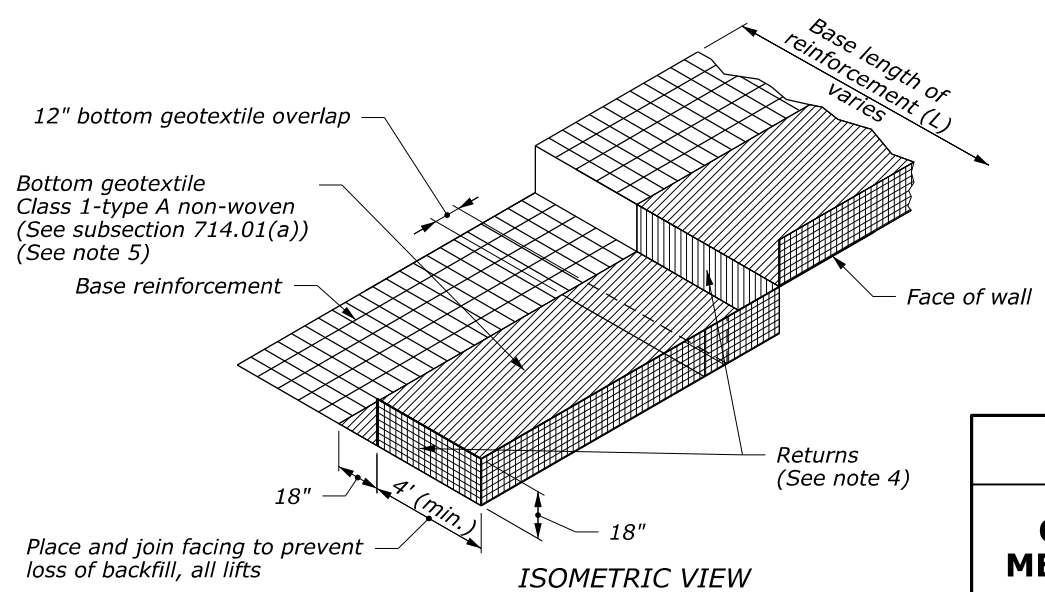
**NOTE:**

1. Design welded wire face MSE walls according to Section 257 and AASHTO LRFD Bridge Design Specifications.
2. Top of wall will be as shown on wall layout drawings. No steps will be allowed.
3. Install guardrail posts according to subsection 617.04.
4. Terminate wire-face wall at the beginning and end of each lift with a return of the wall facing material a minimum of 4' into the backfill. Returns will not be measured for payment.
5. Bottom geotextile to cover the base reinforcement and extend 18" up the wall face on all walls.
6. Sample and test materials or products according to table 255-2.
7. Slope or shore excavation according to Section 208.

TEST LEVEL	L (ft)
2 ( $\leq 45$ mph)	3.5
3 ( $> 45$ mph)	4



**TYPICAL ELEVATION**



**MSE WELDED WIRE FACED RETURN MAT**

NO SCALE

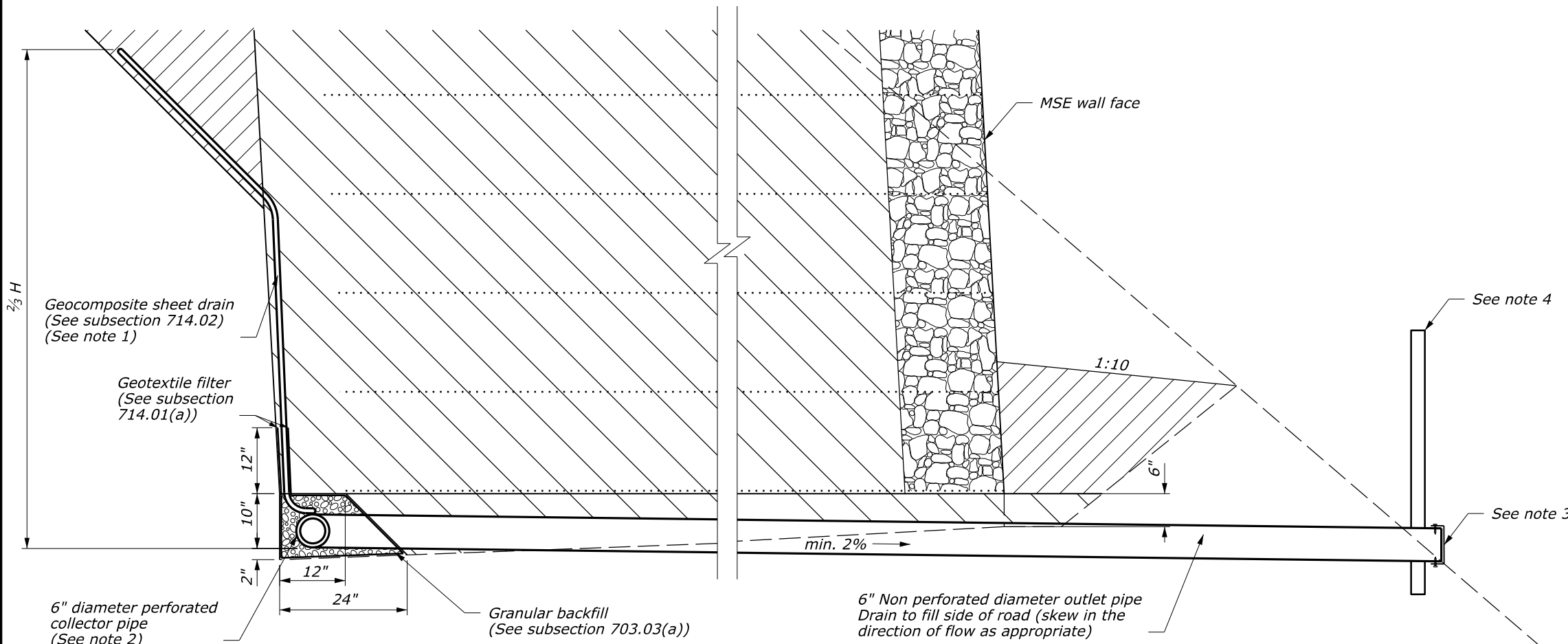
U.S. DEPARTMENT OF TRANSPORTATION  
FEDERAL HIGHWAY ADMINISTRATION  
CENTRAL FEDERAL LANDS HIGHWAY DIVISION

CFLHD DETAIL  
**CONTRACTOR DESIGNED  
MECHANICALLY STABILIZED  
EARTH (MSE) WALL**  
Sheet 1 of 2

DETAIL APPROVED FOR USE	DETAIL
REVISION: DRAFT: 04/2015 06/2018 09/2020	C257-50

30 September 2021 11:05 AM N:\CFL-DPITT\_OpenRoads\Designer\_Connect\Details\C257-50.dgn [C257-50 Sheet 2]

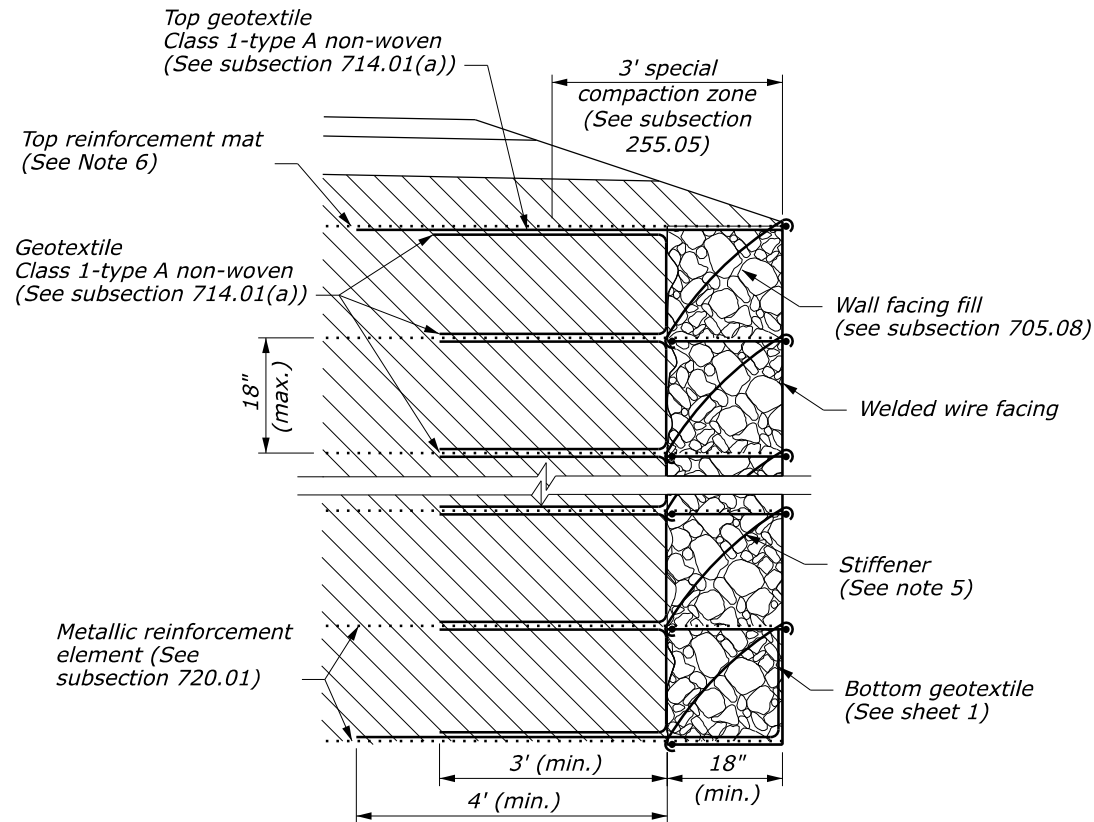
STATE	PROJECT	SHEET NUMBER
ST	PROJECT NUMBER PROJECT NAME	



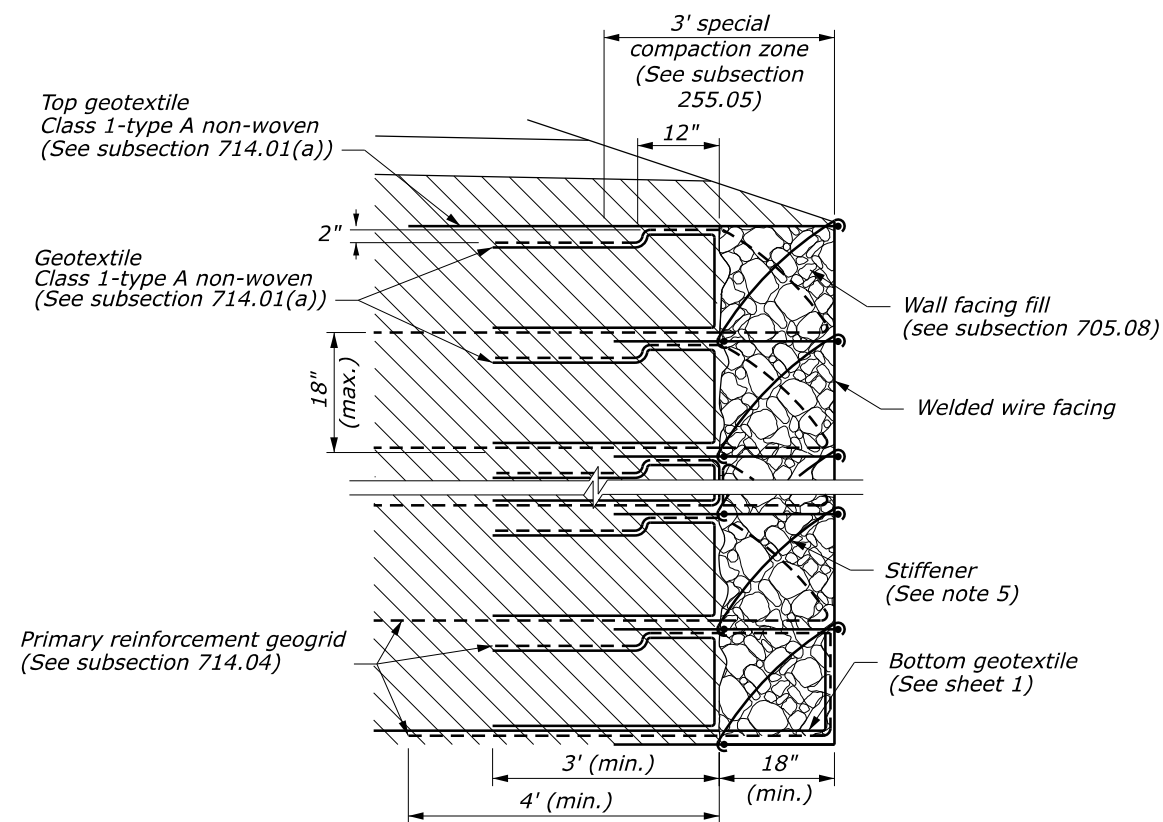
**NOTE:**

1. Place geocomposite sheet drains in 3' (min.) wide strips with a spacing to achieve 30% ±5% coverage area on excavation backslope to 2/3H.
2. Connect collector pipes to outlet pipes using a t-connector and outlet at low points of wall and at 50' (max.) spacing. Furnish collector pipe, outlet pipe, and fittings meeting the requirements of subsection 708.04.
3. Cover the end of the outlet pipe with screen according to subsection 605.03. Hold the screen securely in place with standard coupling bands or by other approved means with securing screws.
4. Mark the outlet of the outlet pipe with a 4' long post or other suitable marker. Place post within 12" of the end of the pipe.
5. Spacing and use of stiffener to be determined by the manufacturer.
6. Welded wire reinforcement systems require a top reinforcement mat unless the wall facing uses stiffeners to adequately reinforce the wall face.

**MSE WALL DRAINAGE DETAIL**



**METALLIC REINFORCED MSE WALL DETAIL**



**GEOGRID REINFORCED MSE WALL DETAIL**

NO SCALE

U.S. DEPARTMENT OF TRANSPORTATION  
FEDERAL HIGHWAY ADMINISTRATION  
CENTRAL FEDERAL LANDS HIGHWAY DIVISION

CFLHD DETAIL  
**CONTRACTOR DESIGNED  
MECHANICALLY STABILIZED  
EARTH (MSE) WALL**  
Sheet 2 of 2

DETAIL APPROVED FOR USE	DETAIL
REVISED:	C257-50
DRAFT: 04/2015 06/2018	