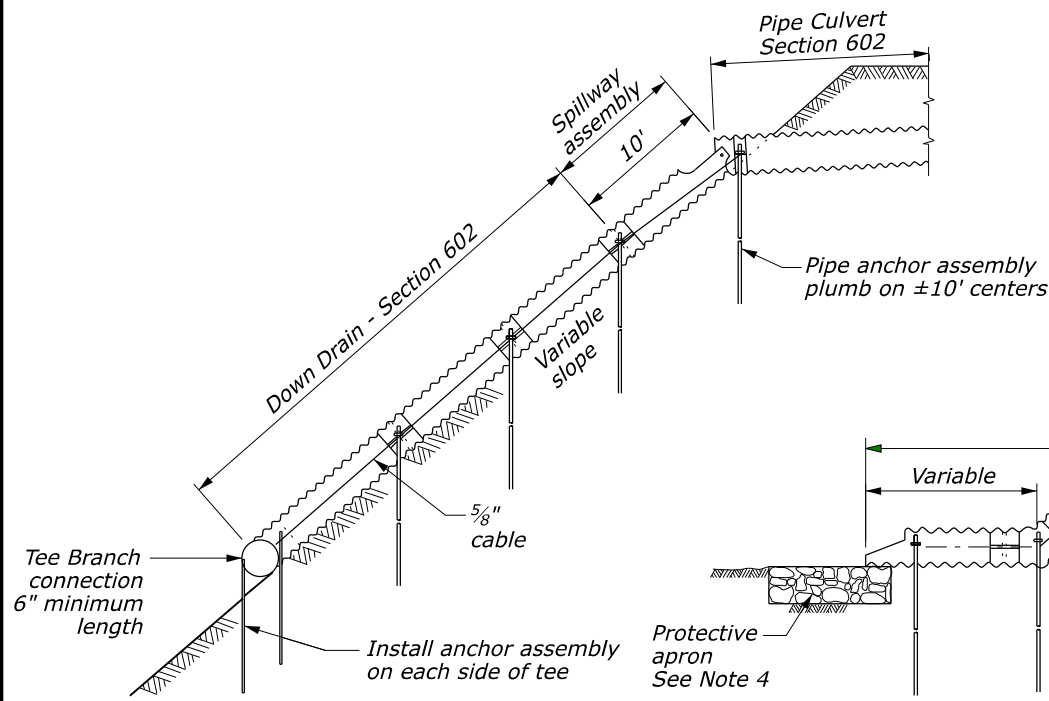
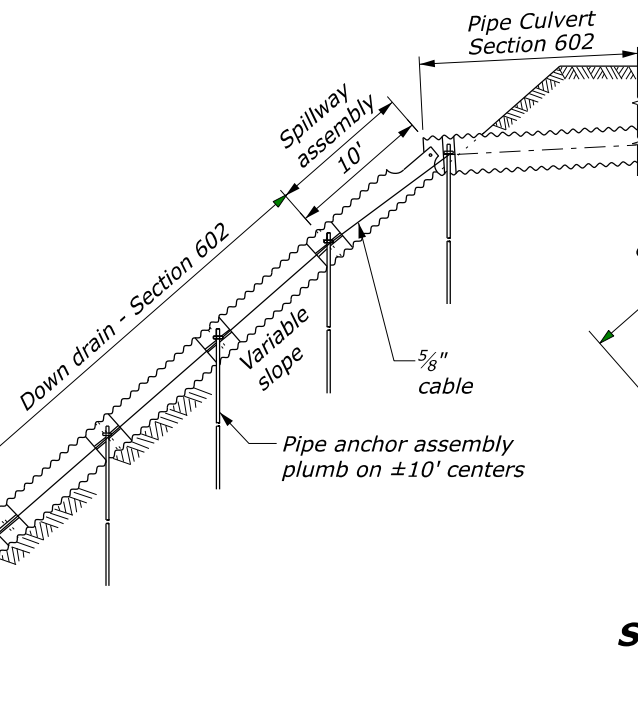


STATE	PROJECT	SHEET NUMBER
ST	PROJECT NUMBER PROJECT NAME	



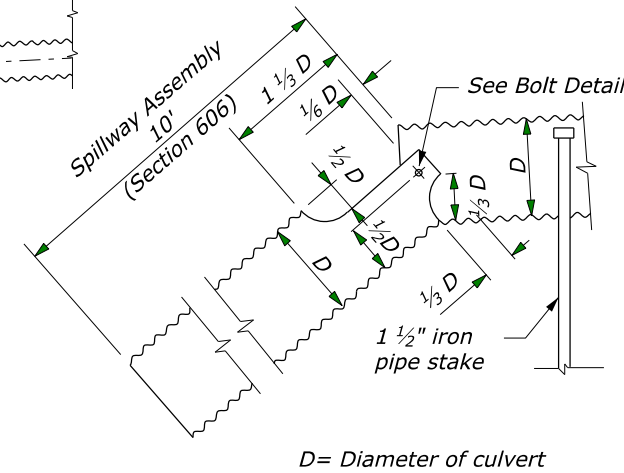
ELEVATION

**SPILLWAY ASSEMBLY WITH DOWN DRAIN  
OUTLET ON NON-ERODIBLE MATERIAL**



ELEVATION

**SPILLWAY ASSEMBLY WITH DOWN DRAIN  
OUTLET ON ERODIBLE MATERIAL**

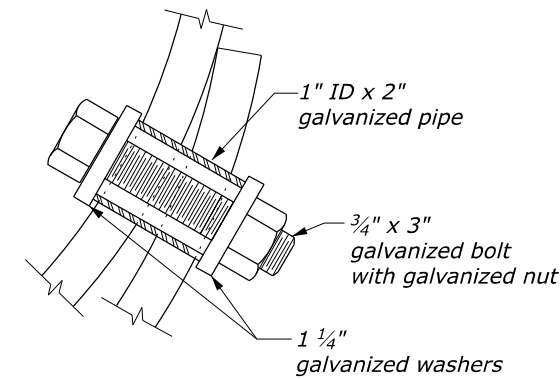


D= Diameter of culvert

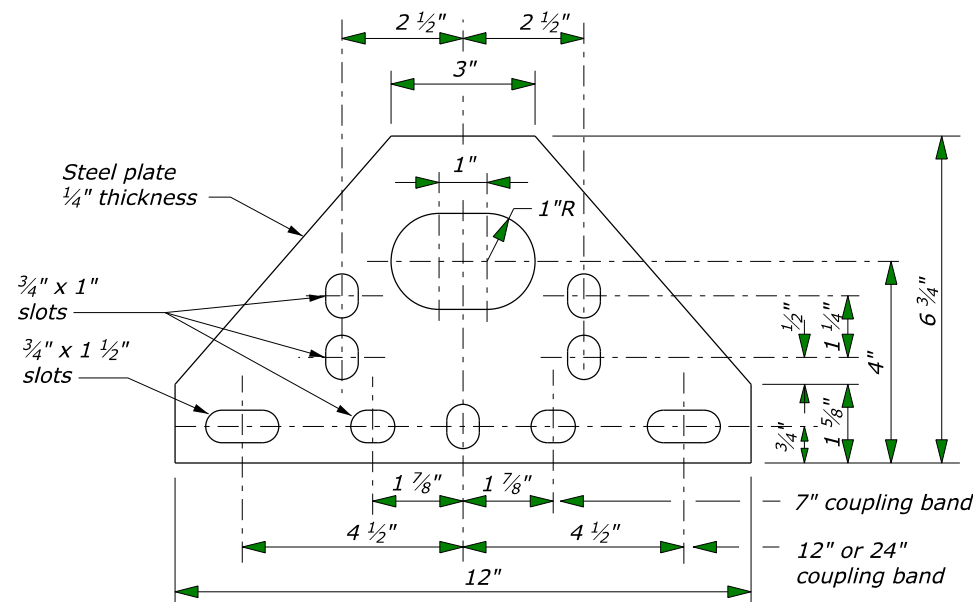
**SPILLWAY ASSEMBLY**

**NOTE:**

1. Fabricate spillway assembly from annular corrugated pipe, or from helically corrugated pipe with factory annular or reformed ends. Use 16 gage galvanized steel or 16 gage aluminum.
2. Make all banded connections watertight by placing 1/4\"
3. Payment for Tee Branch connection under Section 602 is included in the linear foot measurement for culvert pipe for the applicable sizes. Measure Tee Branch connections along the top of the Tee.
4. Furnish riprap conforming to Section 251 for protective apron. See Detail C251-50.
5. Galvanize all items of anchor assembly after fabrication.
6. Furnish hardware in the imperial sizes shown. Equivalent metric sizes may be used when imperial sizes are not available.
7. Alternate designs may be used with approval of the CO.

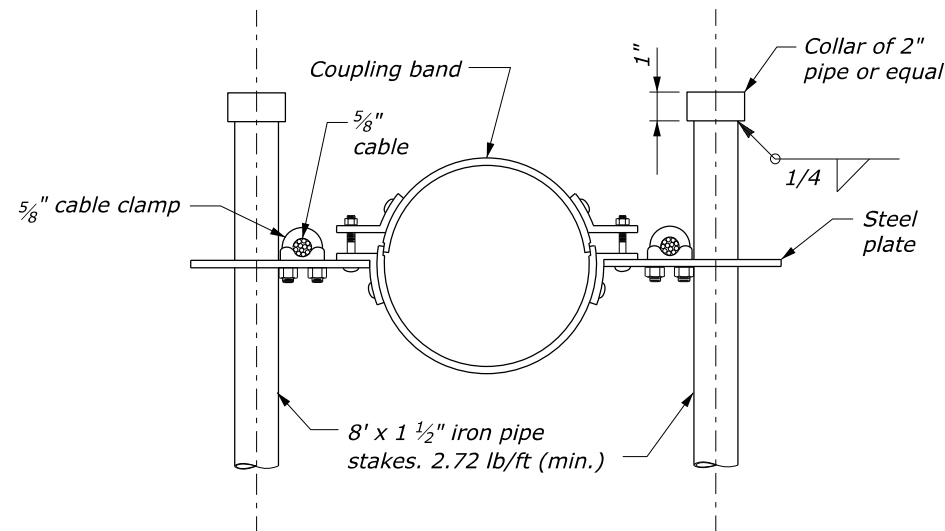


**BOLT DETAIL**



Measure length of coupling band parallel to the centerline of the pipe.

**STEEL PLATE**



**ANCHOR ASSEMBLY**

NO SCALE

U.S. DEPARTMENT OF TRANSPORTATION FEDERAL HIGHWAY ADMINISTRATION CENTRAL FEDERAL LANDS HIGHWAY DIVISION	
CFLHD DETAIL	
<b>CMP SPILLWAY ASSEMBLY WITH DOWN DRAIN</b>	
DETAIL APPROVED FOR USE REVISED: 08/2006 08/2014 09/2021	DETAIL C606-50