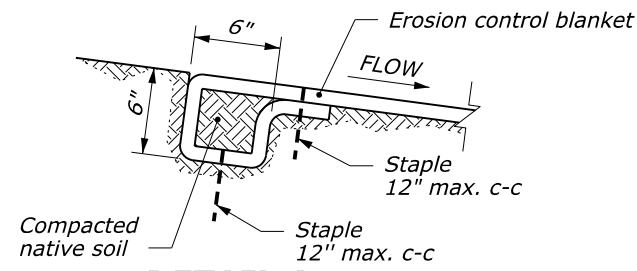


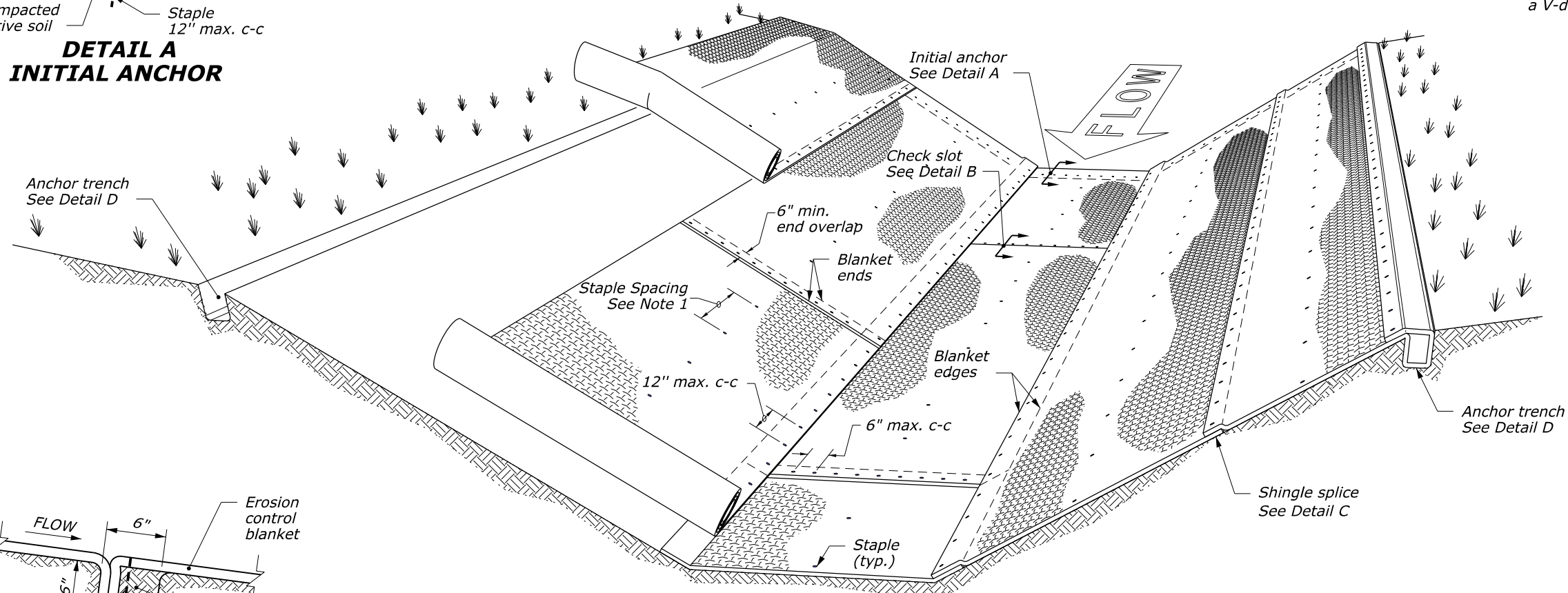
| | | |
|-------|--------------------------------|--------------|
| STATE | PROJECT | SHEET NUMBER |
| ST | PROJECT NUMBER PROJECT NAME | |

NOTE:

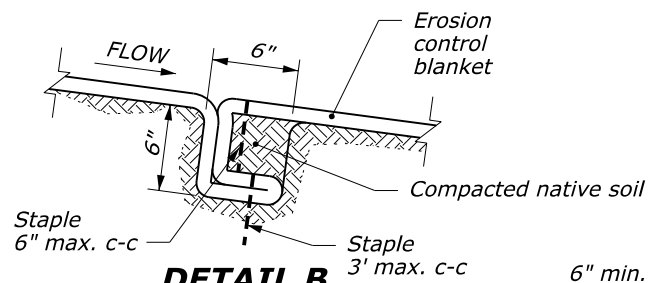
1. Install staples according to the manufacturer's recommendations.
2. Provide check slots according to the manufacturer's recommendations.
3. Roll ends may be spliced in a check slot.
4. Trapezoidal ditch shown. Similar details for a V-ditch.



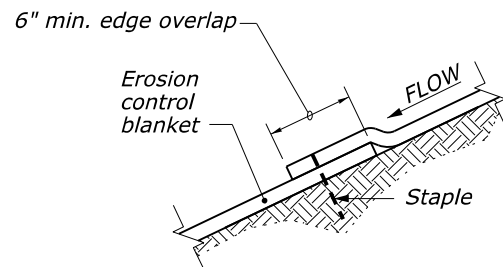
**DETAIL A
INITIAL ANCHOR**



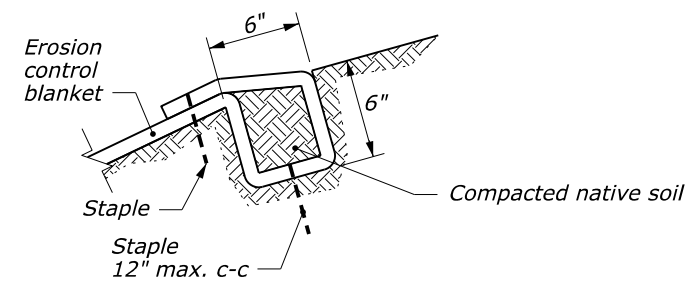
PERSPECTIVE VIEW



**DETAIL B
CHECK SLOT**
See Note 2



**DETAIL C
SHINGLE SPLICE**



**DETAIL D
ANCHOR TRENCH**

N:\CFL-DPITT_OpenRoads Designer\Connect\Details\C629-51.dgn [C629-51] 15 October 2021 8:33 AM

NO SCALE

| | |
|---|---------|
| U.S. DEPARTMENT OF TRANSPORTATION FEDERAL HIGHWAY ADMINISTRATION CENTRAL FEDERAL LANDS HIGHWAY DIVISION | |
| CFLHD DETAIL ROLLED EROSION CONTROL PRODUCT IN CHANNEL | |
| DETAIL APPROVED FOR USE 01/2011 | DETAIL |
| REVISED: 08/2014 10/2021 | C629-51 |

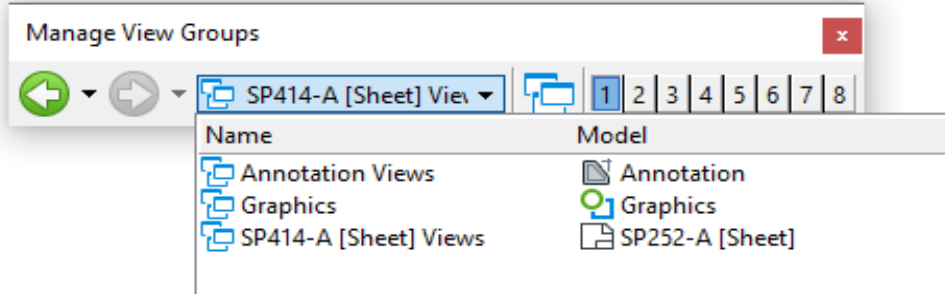
Notes to the Designer

Updated October 2021

Rolled Erosion Control Product in Channel

General Information

- Printing should be done from the **[Sheet]** View model



- **Appropriate Applications.** Erosion control blankets may be used for temporary or permanent soil stabilization in drainage channels. Blankets lessen the impact of soil erosion due to wind or water and provide a mulching layer for the establishment of vegetation. Erosion control blankets may be made of a variety of materials, such as jute, straw, or excelsior, providing variable longevity.
- **Limitations.** Erosion control blankets are typically used in ditches with velocities less than 9 ft/s. Erosion control blankets may be used under riprap check dams on steep slopes.
- **Layout Guidance.** Show locations of matting in the erosion and sediment control plans. Use the pattern EC_MAT in the cell library CFL_ErosionControl.cel.

Applicable SCRs

- Section 629: <https://flh.fhwa.dot.gov/resources/specs/fp-14/cfl/documents/S629-14.docx>

Typical Pay Item Used

- 62901-[0100 through 1400] Rolled erosion control product, type xx [SQYD] OR
- 62902-[0100 through 1400] Rolled erosion control product, type xx [ACRE]

Updates

- **January 2011**
 - New CFL Detail drawing
- **August 2014**
 - Updated for FP-14
 - Updated Border
- **October 2021**
 - Updated for OpenRoads Designer