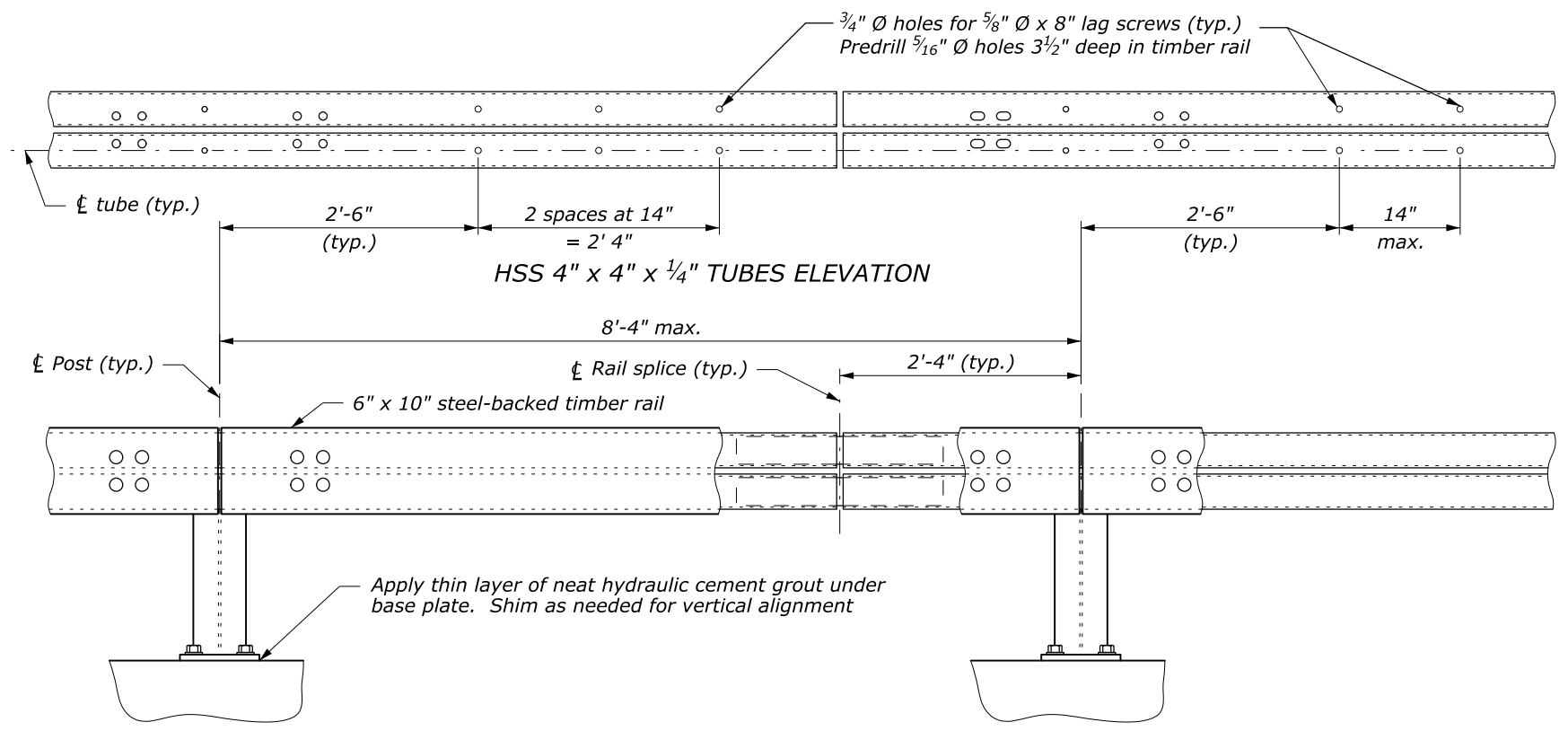
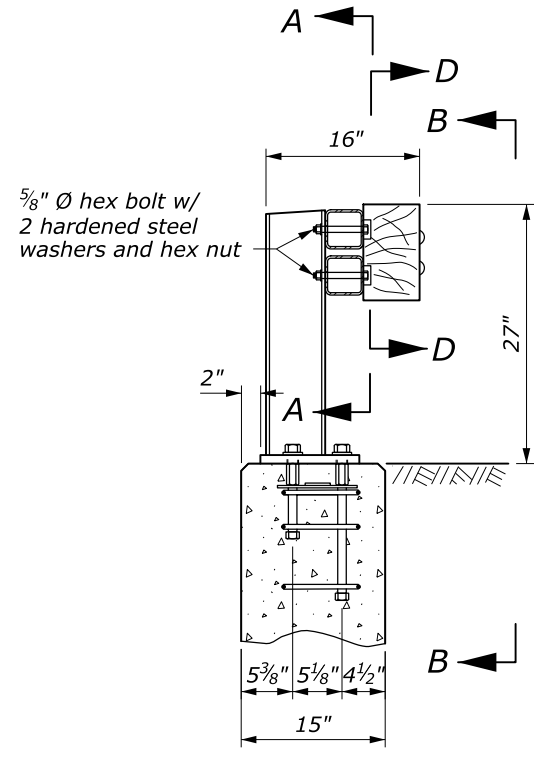


STATE	PROJECT	SHEET NUMBER

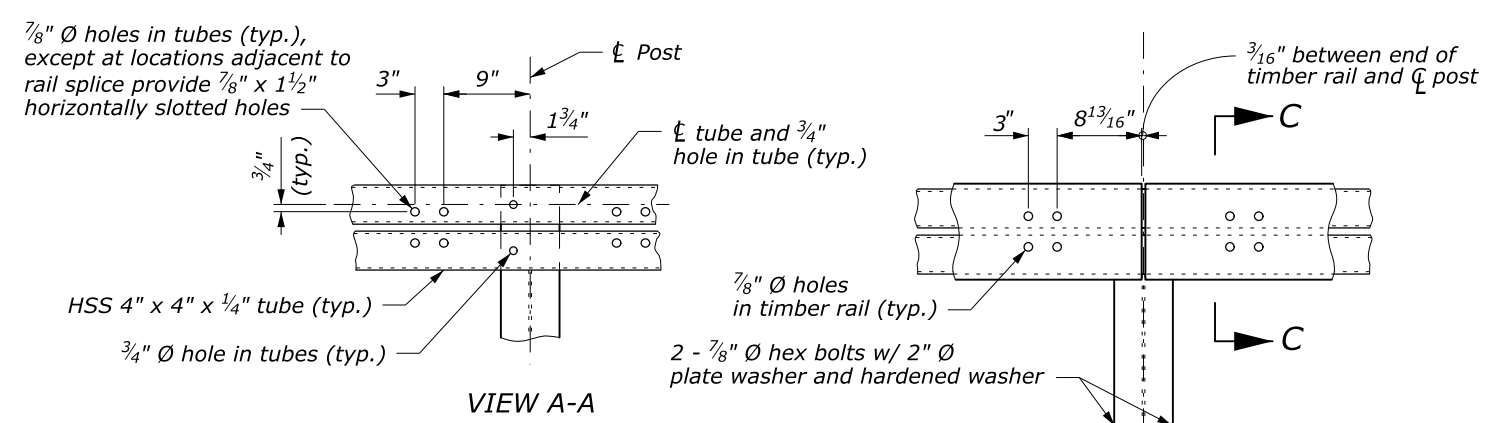


- NOTES:**
1. Furnish steel for rail posts, base plates, shims, splice sleeves, and anchor assembly plates conforming to ASTM A36. Furnish structural tubing for rails conforming to ASTM A500, Grade B. Paint all metal components of the bridge rail except post base shims, anchor assemblies, and rail splice sleeves. Galvanize post base shims, anchor assemblies, and rail splice sleeves. Furnish hex bolts conforming to ASTM A325. Furnish hex coupling nuts with a center stop conforming to ASTM A563, Grade C, D, or DH. For all other fasteners conform to ASTM A307.
 2. Submit fabrication drawings according to Section 555 and show rail section lengths, splice locations, rail post spacing, and fastener lengths. Fabricate steel according to Section 555 before galvanizing or painting. Weld according to Section 555.
 3. Connect each HSS 4- by 4- by 1/4-inch tube to at least three posts between splices.
 4. Erect the rail parallel to grade.

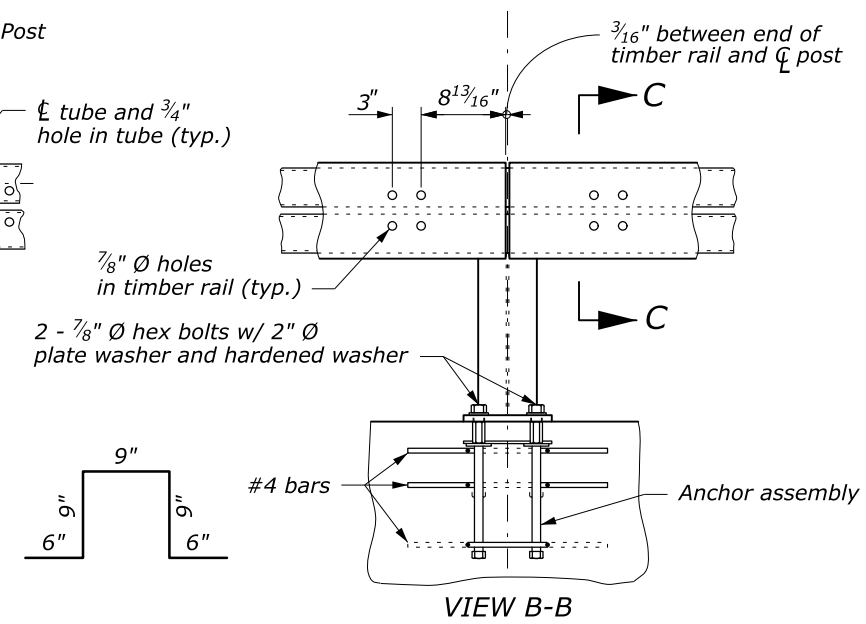
BRIDGE RAIL ELEVATION



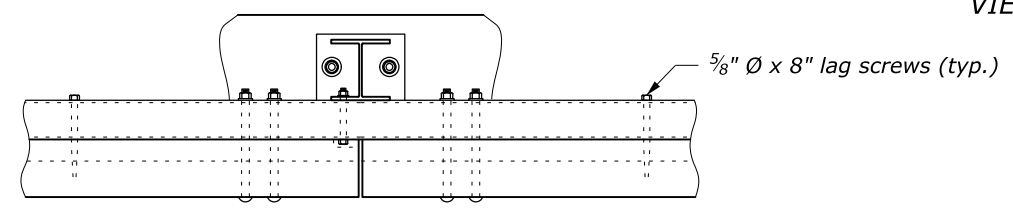
TYPICAL SECTION @ POST



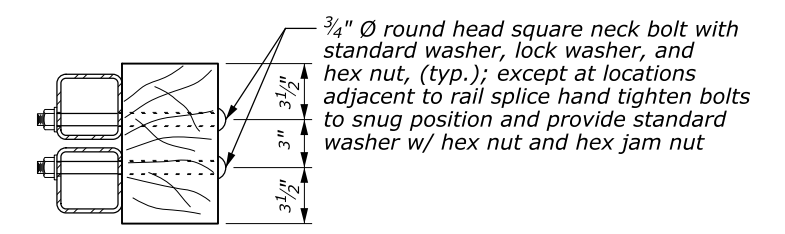
VIEW A-A



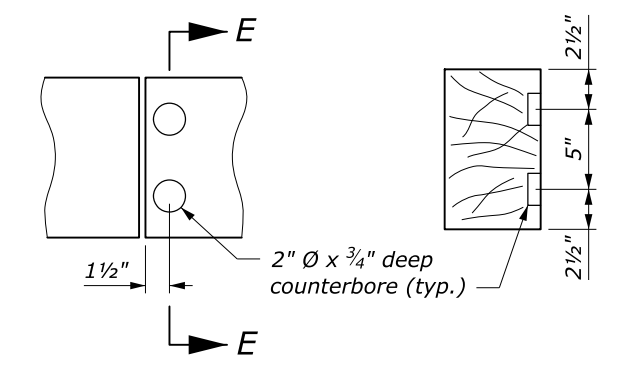
VIEW B-B



PLAN VIEW @ POST



SECTION C-C



VIEW D-D

SECTION E-E

U.S. DEPARTMENT OF TRANSPORTATION
 FEDERAL HIGHWAY ADMINISTRATION
 OFFICE OF FEDERAL LANDS HIGHWAY

EFLHD DETAIL

**TUBULAR STEEL-BACKED
 TIMBER BRIDGE RAIL**

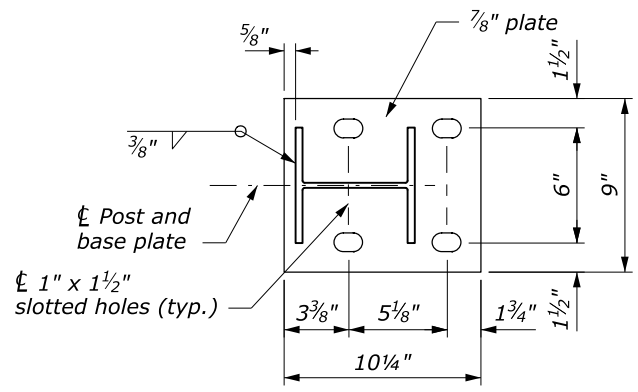
Sheet 1 of 2

NO SCALE

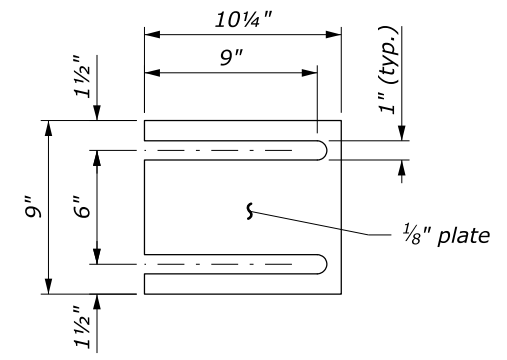
REVIS: 8/2016 4/2019 9/2020

DETAIL
 ET 556-1

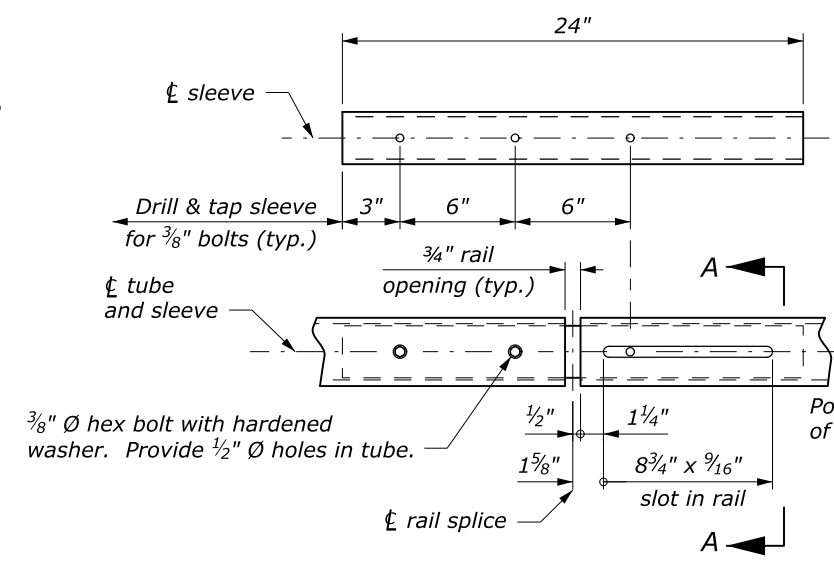
M:\Standards_and_Details\EFLHD_Detail-Drawings\FP-14\FP-14_ORD_Version\ORD_Ready\Section-556_Bridge_Rail\ing\55601_EFL_TEMP.dgn [Sheet 1] 24 February 2021 11:07 AM



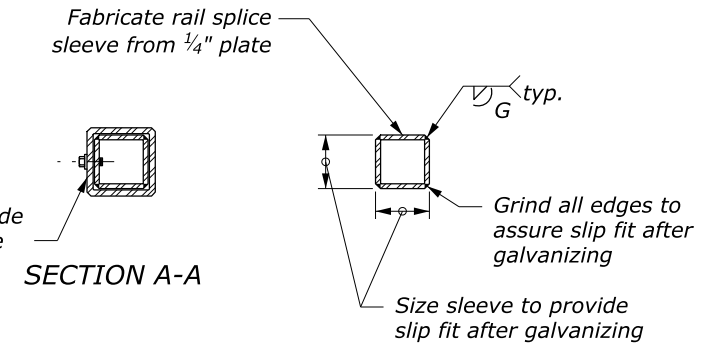
BASE PLATE DETAIL



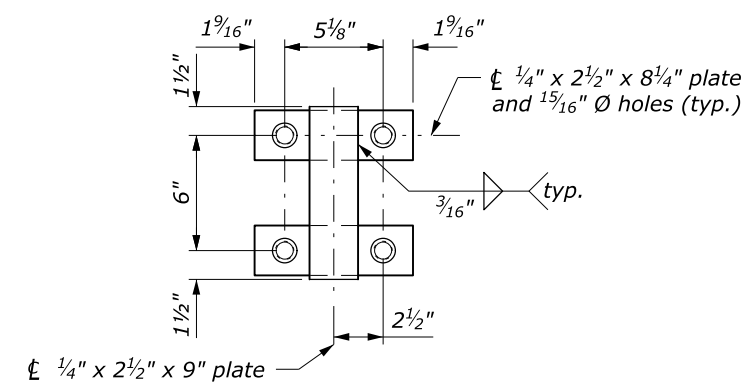
RAIL POST BASE SHIM



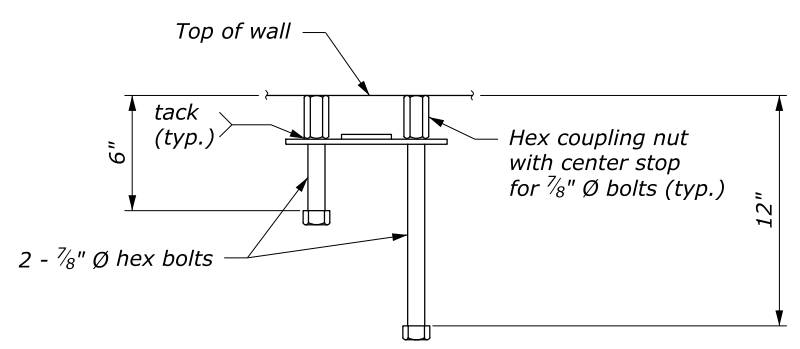
RAIL SPLICE DETAIL



SLEEVE

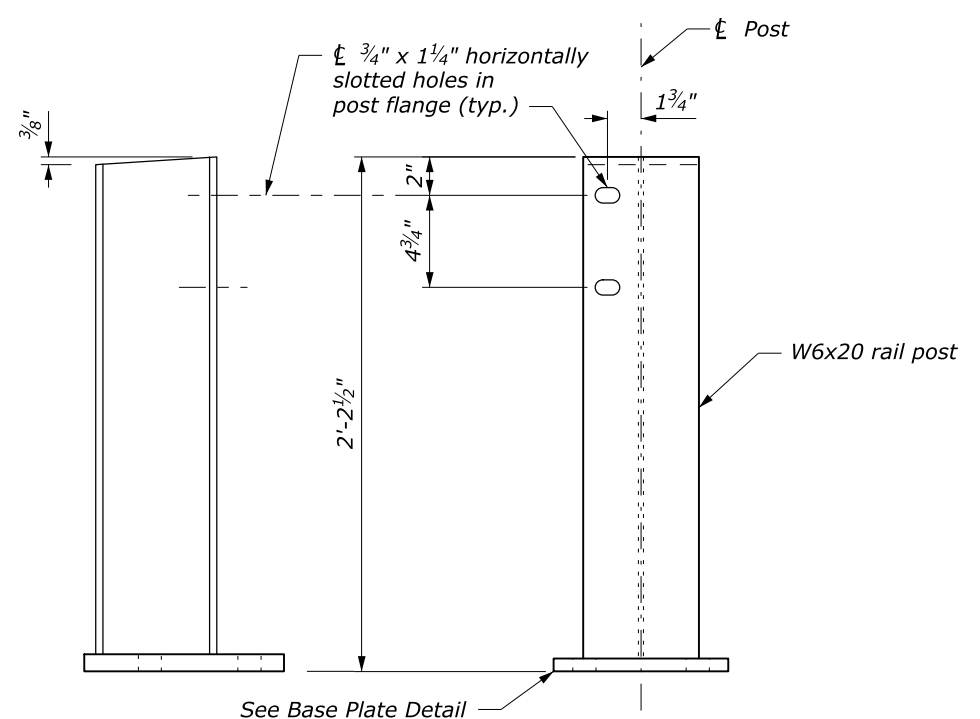


PLAN



ELEVATION

ANCHOR ASSEMBLY



POST ASSEMBLY

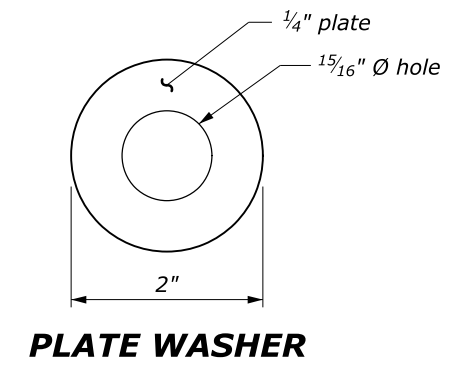


PLATE WASHER

U.S. DEPARTMENT OF TRANSPORTATION
 FEDERAL HIGHWAY ADMINISTRATION
 OFFICE OF FEDERAL LANDS HIGHWAY

EFLHD DETAIL

**TUBULAR STEEL-BACKED
 TIMBER BRIDGE RAIL**

Sheet 2 of 2

NO SCALE

REVISID: 8/2016 4/2019 9/2020

DETAIL
 ET 556-1

M:\Standards_and_Details\EFLHD_Detail Drawings\FP-14\FP-14_ORD_Version\ORD_Ready\Section-556_Bridge Rail\ing\55601_EFL_TEMP.dgn [Sheet 2] 24 February 2021 11:28 AM