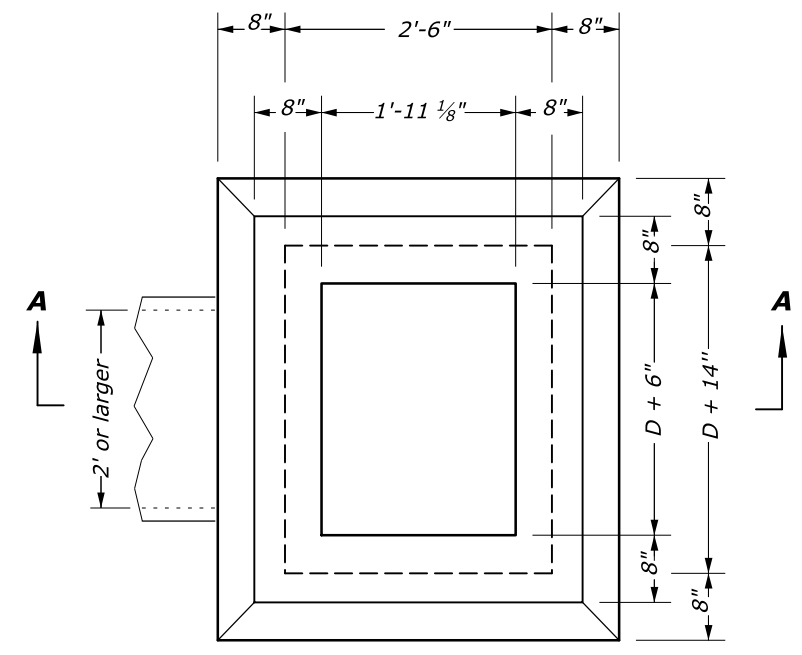


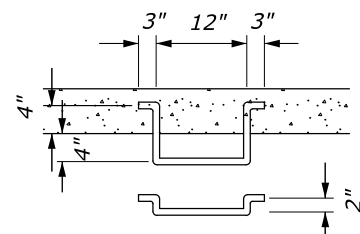
STATE	PROJECT	SHEET NUMBER

**NOTES:**

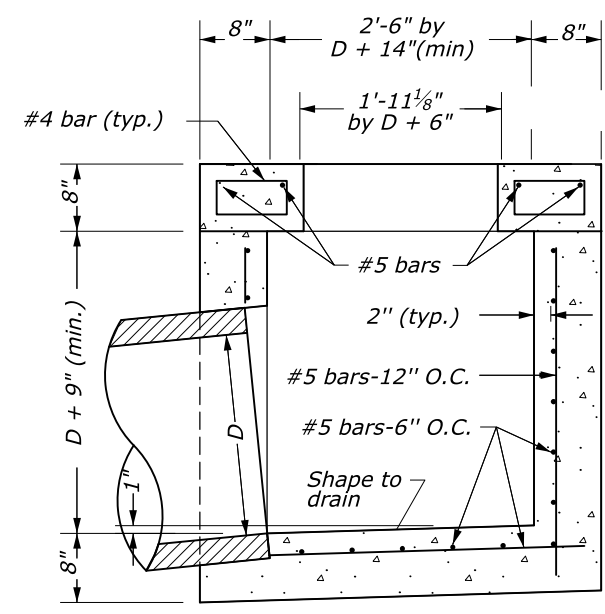
1. At the option of the Contractor, walls less than 4 feet in depth may be of either concrete block or concrete as shown.
2. Construct Type 6A-6 inlets for 24-inch pipes and larger for "Limited Headroom", unless otherwise directed by the CO.
3. Construct inlets parallel to the roadway centerline and grade. For pipes on skew, adjust inlets as directed by the CO.
4. Construct ladder rungs of 3/4-inch round or 3/4-inch square steel or wrought iron where depth exceeds 4 feet.
5. Minor variations in design and dimensions for frames and grating are permitted to allow manufacturer's standards. Ensure all grates are bicycle safe.
6. Orient curved vanes toward direction of stormwater flow. In a sump condition, orient curved vanes in either direction. Ensure all grates are correctly oriented towards stormwater flow.
7. Construct Type 6A-6 metal frame and grating for 6-inch reveal, unless otherwise directed by the CO.
8. See Sheet 2 of 2 for metal frame and grate (Curved Vane Grate) details.



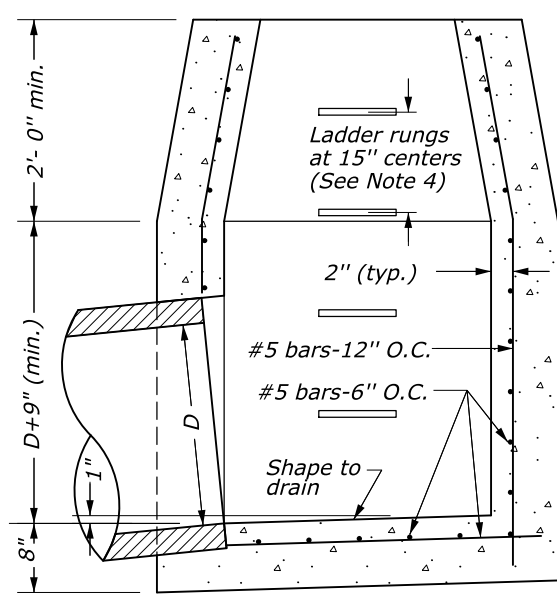
**PLAN VIEW**



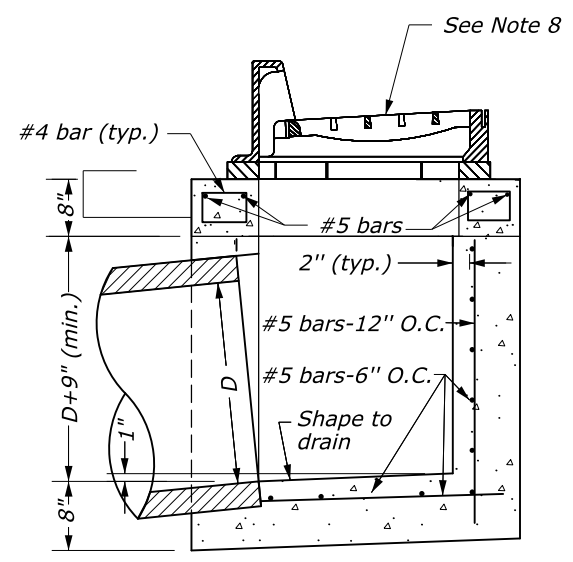
**LADDER RUNG**  
See Note 4



**SECTION A-A**  
Limited Headroom



**SECTION A-A**  
Ample Headroom



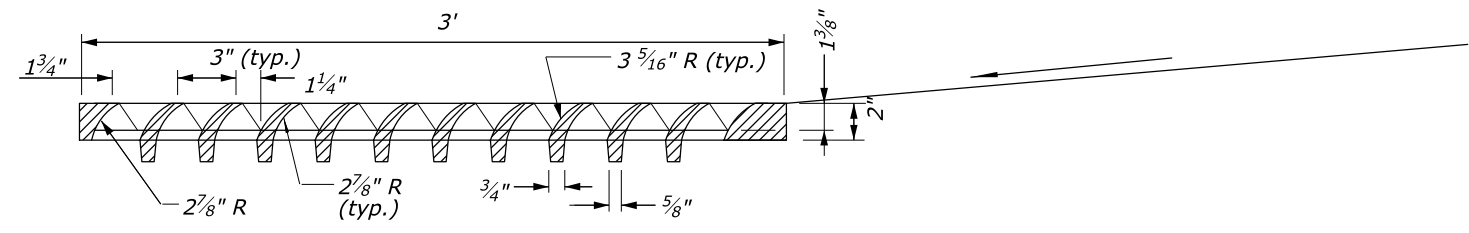
**SECTION A-A**  
**INLET, TYPE 6A-6**  
(For up to 24" pipes)

**INLET, TYPE 6A-6**  
(For 24" or larger pipes)

NO SCALE

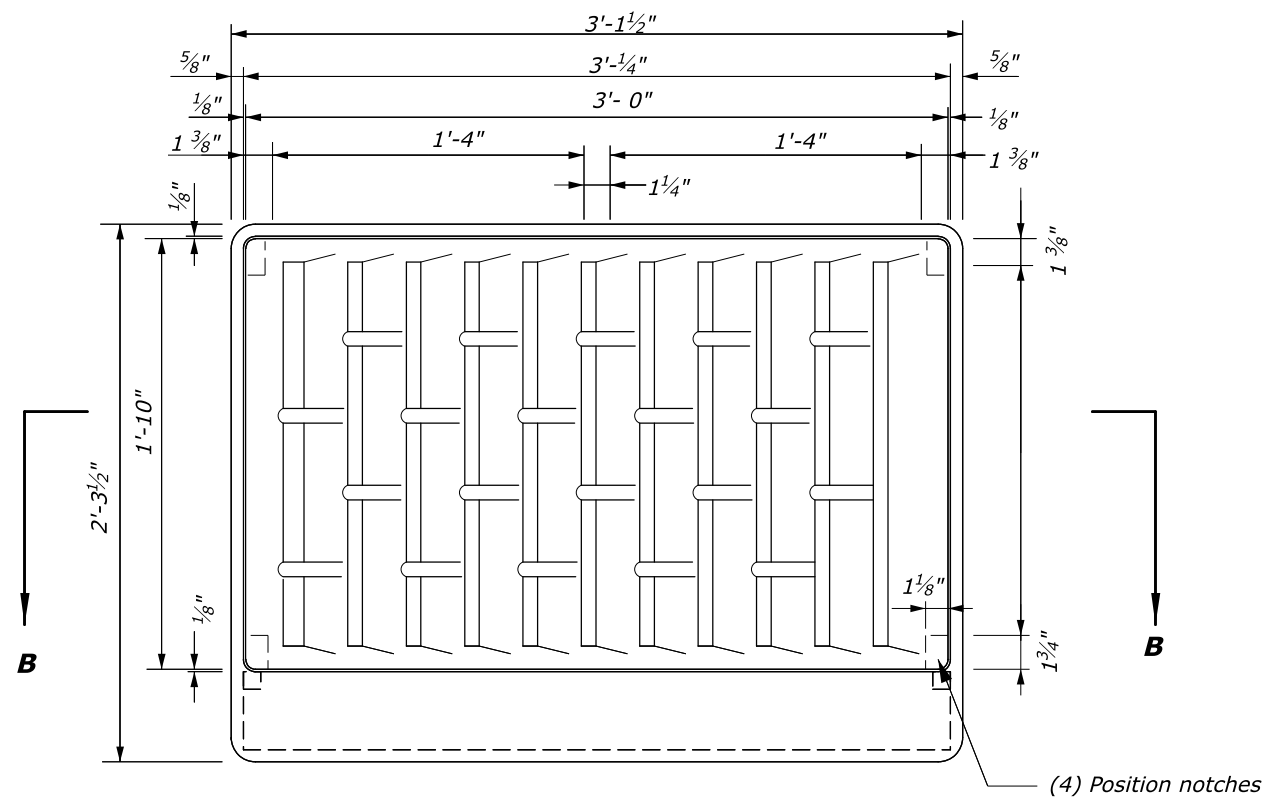
U.S. DEPARTMENT OF TRANSPORTATION FEDERAL HIGHWAY ADMINISTRATION OFFICE OF FEDERAL LANDS HIGHWAY	
EFLHD DETAIL	
<b>INLET, TYPE 6A-6</b> Sheet 1 of 2	
DETAIL APPROVED FOR USE APPROVED: MAY 2011 REVISED: NOVEMBER 2021	DETAIL E604-09

M:\Standards\_and\_Details\EFLHD\_Detail Drawings\FP-14.1\_ORD\_Version\Section-604\_Manholes, Inlets and Catch Basins\60409\_detail.dgn [Sheet 1] 9 November 2021 12:30 PM

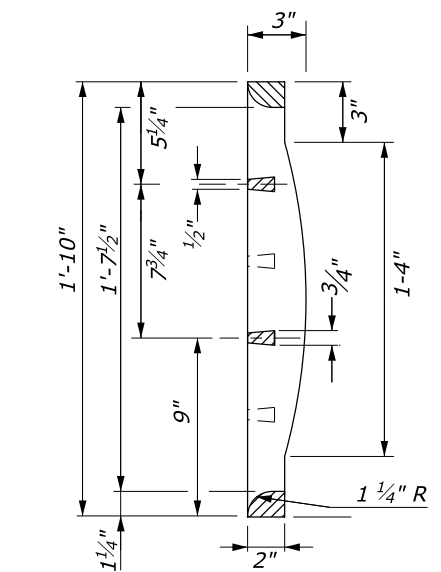


**FRONT ELEVATION GRATE TYPE 6A-6 MOUNTED (CURVED VANE GRATINGS)**

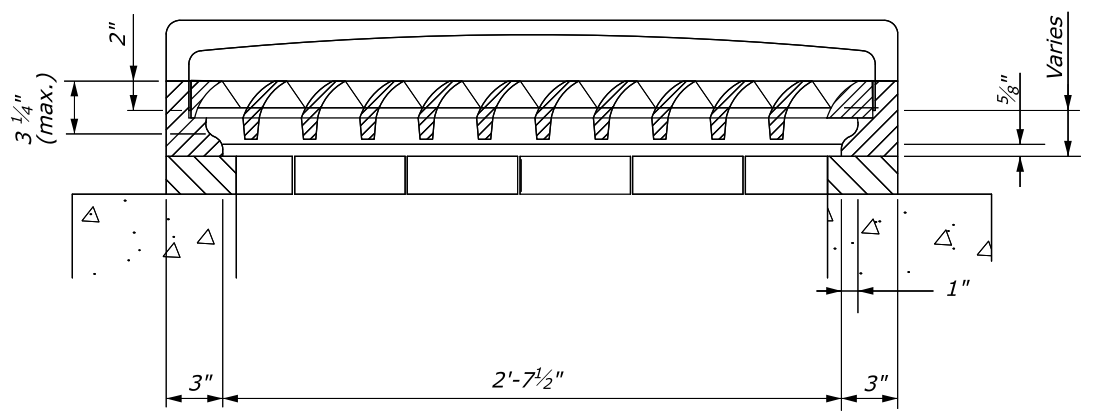
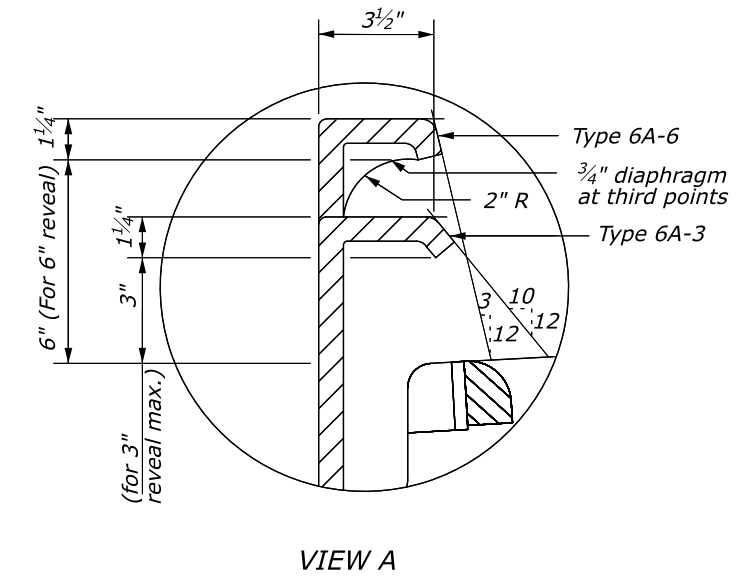
- NOTES:**
1. Minor variations in design and dimensions for frames and grating are permitted to allow manufacturer's standards. Ensure all grates are bicycle safe.
  2. Orient curved vanes toward direction of stormwater flow. In a sump condition, orient curved vanes in either direction. Ensure all grates are correctly oriented towards stormwater flow.



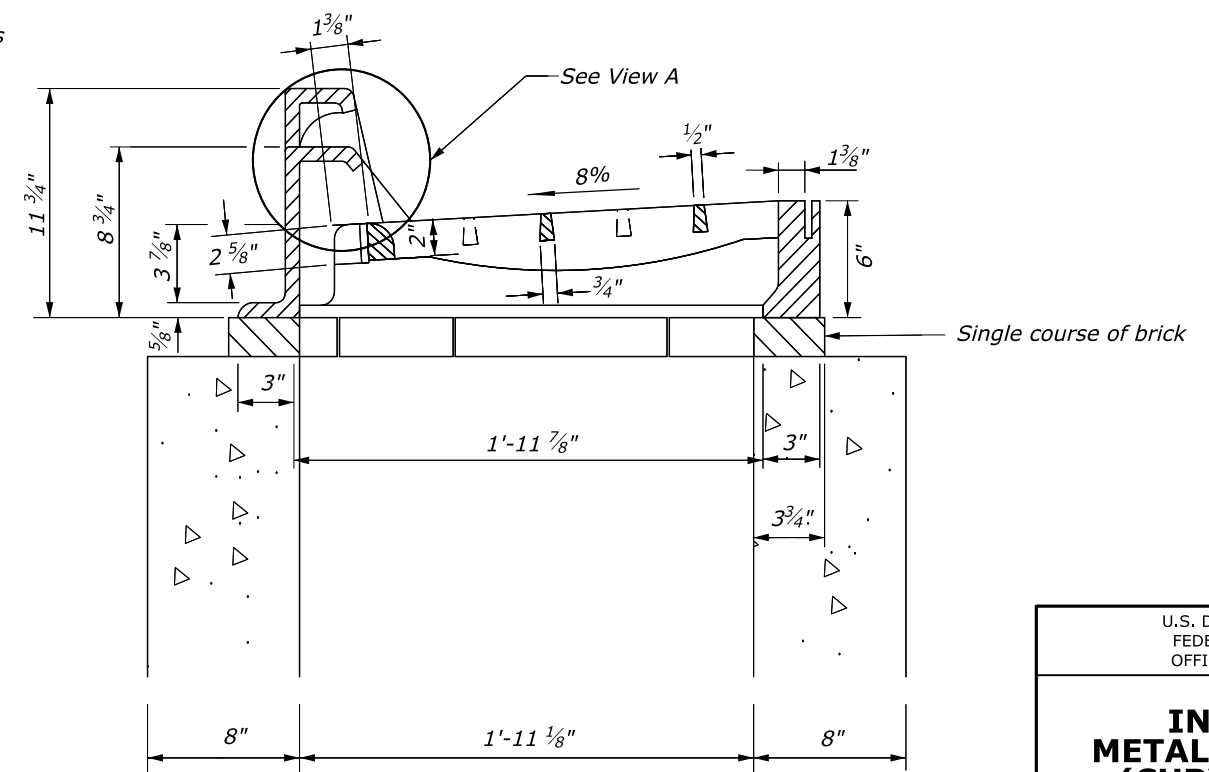
**TOP VIEW FRAME GRATE TYPE 6A-6 MODIFIED (CURVED VANE GRATINGS)**



**SIDE ELEVATION GRATE TYPE 6A-6 MODIFIED (CURVED VANE GRATINGS)**



**SECTION B-B  
METAL FRAMES AND GRATING TYPE 6A-6 MODIFIED**



NO SCALE

U.S. DEPARTMENT OF TRANSPORTATION FEDERAL HIGHWAY ADMINISTRATION OFFICE OF FEDERAL LANDS HIGHWAY	
EFLHD DETAIL <b>INLET, TYPE 6A-6 METAL FRAME AND GRATE (CURVED VANE GRATE)</b> Sheet 2 of 2	
DETAIL APPROVED FOR USE APPROVED: MAY 2011 REVISED: NOVEMBER 2021	DETAIL E604-09