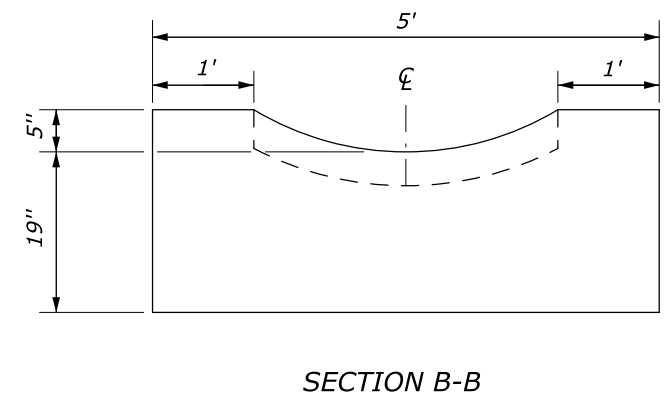
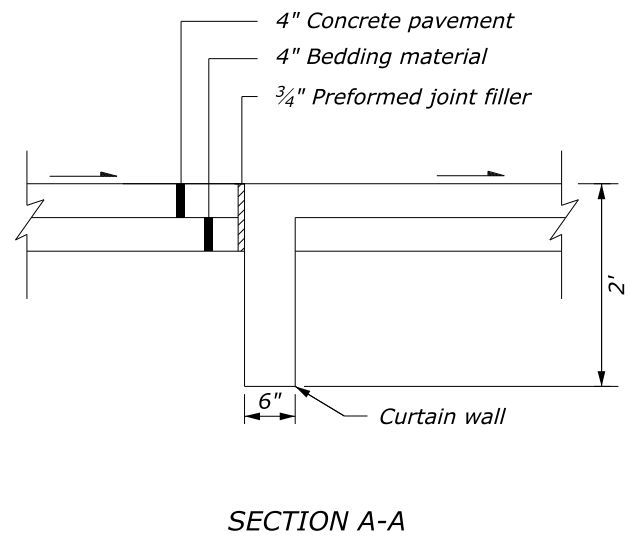
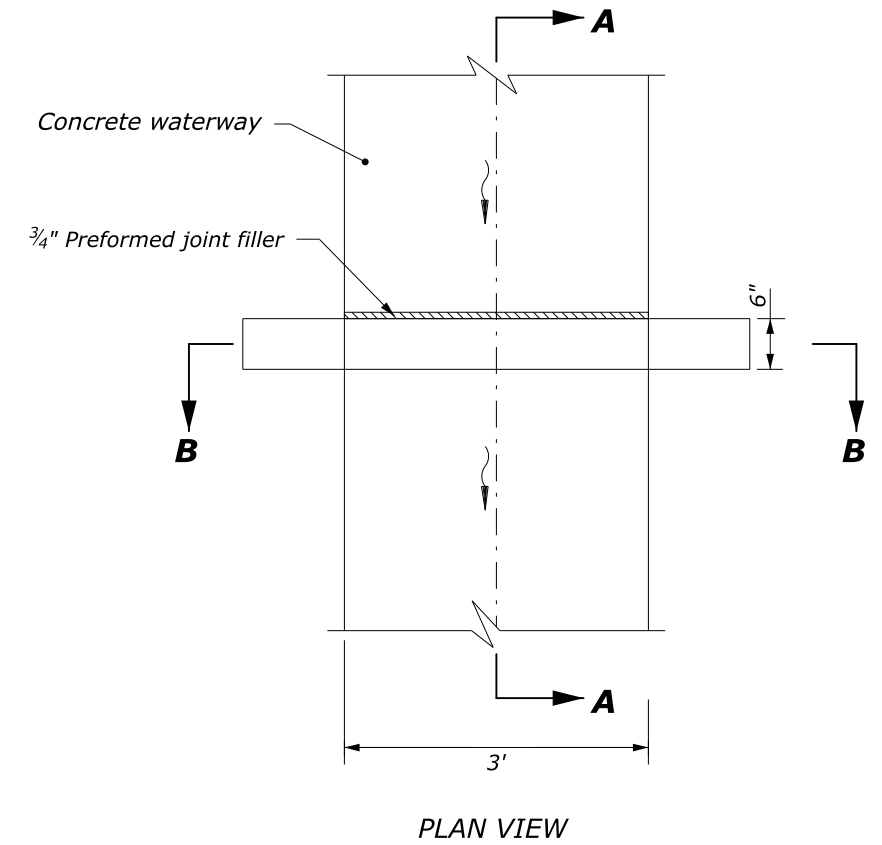
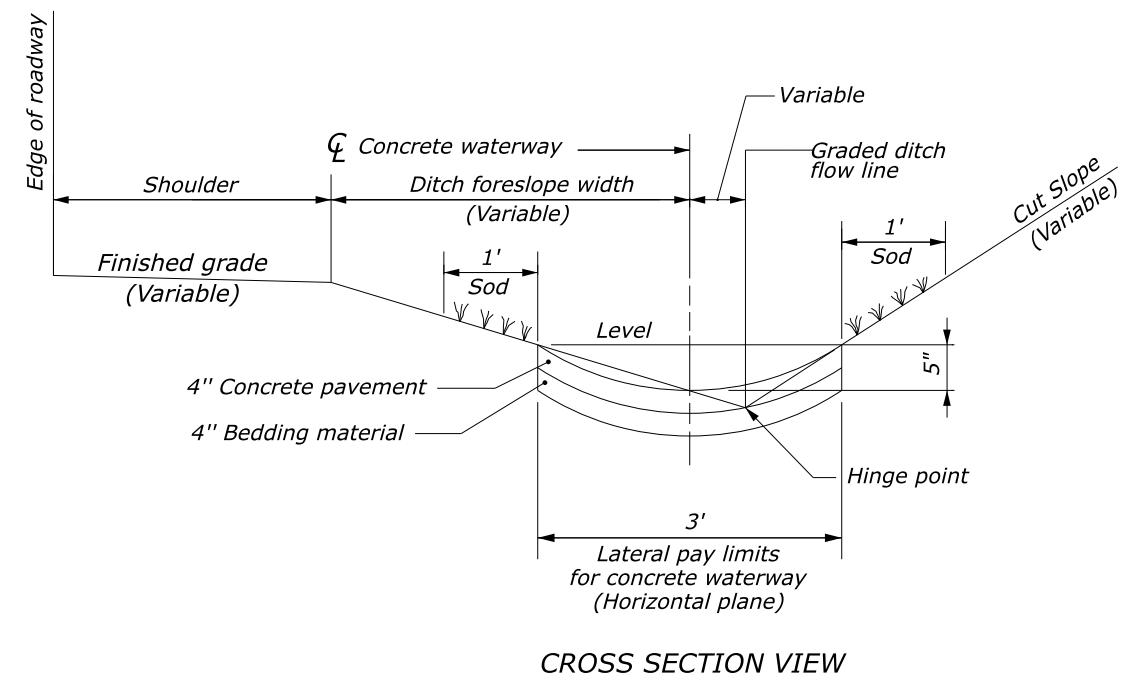


STATE	PROJECT	SHEET NUMBER



**NOTES:**

1. Ensure the approximate shape of the concrete paved waterway is an arc with a radius of 2.9 feet.
2. At inlets and other special locations, widen and shape paved waterway to drain as approved by the CO.
3. Construct paved waterway in uniform sections of 20 feet in length, except closure sections are not less than 5 feet in length. Place expansion joints, with curtain walls at 100-foot intervals.
4. At the outlet end of each paved waterway, construct a curtain wall on the downstream end of the last section of the waterway.

**CONCRETE PAVED WATERWAY**

NO SCALE

U.S. DEPARTMENT OF TRANSPORTATION FEDERAL HIGHWAY ADMINISTRATION OFFICE OF FEDERAL LANDS HIGHWAY	
EFLHD DETAIL	
<b>PAVED WATERWAY, TYPE 4 (CONCRETE)</b>	
DETAIL APPROVED FOR USE APPROVED: MAY 2011 REVISED: SEPTEMBER 2020	DETAIL E608-04

M:\PROJECTS\COLLABORATION\Louisayne\_02172021\_Details\_Work\st60804\_detail.dgn [Sheet] 18 February 2021 11:07 AM