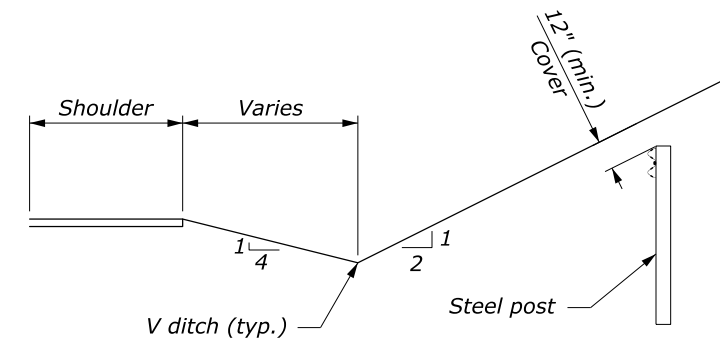
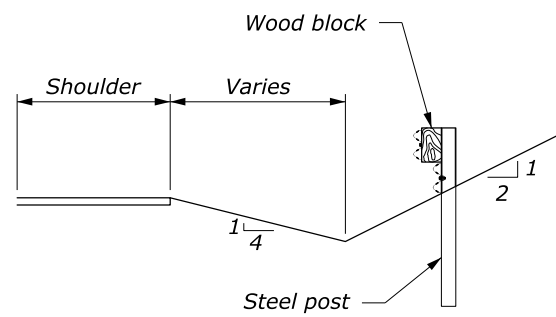
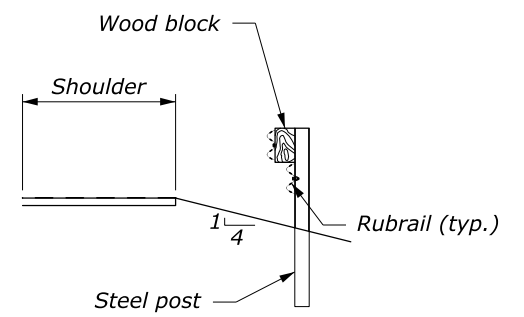
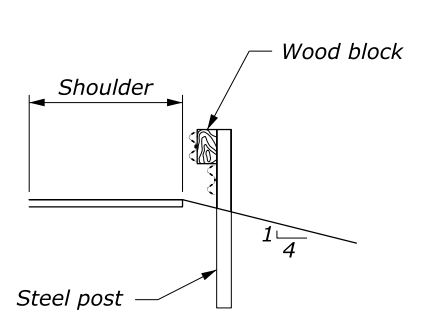
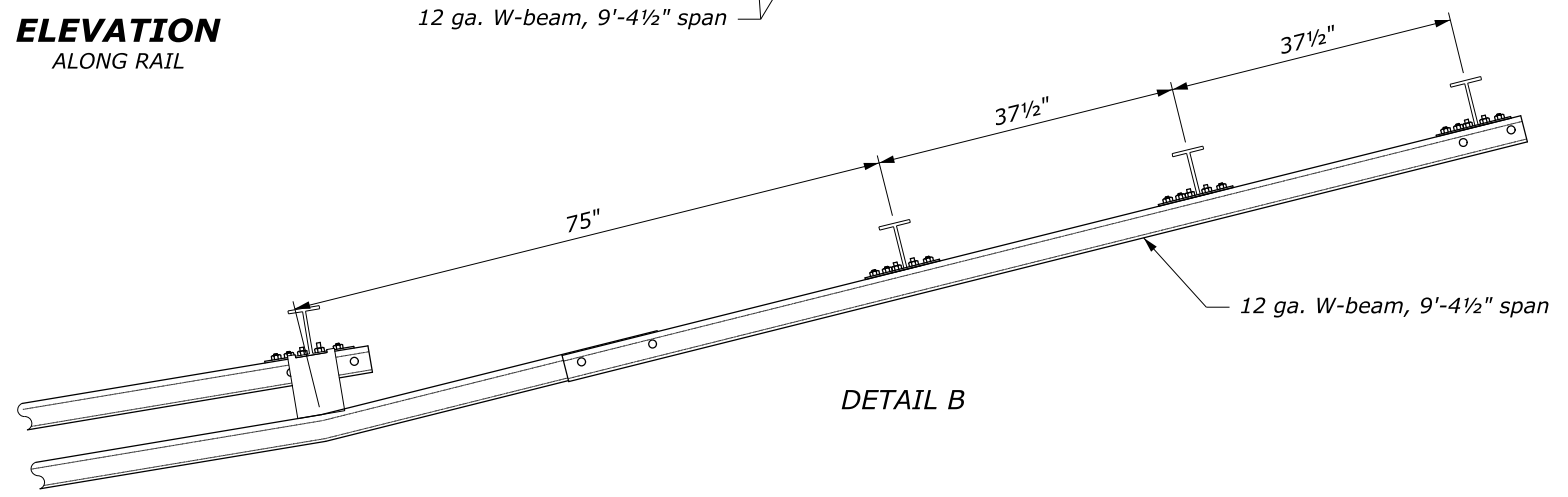
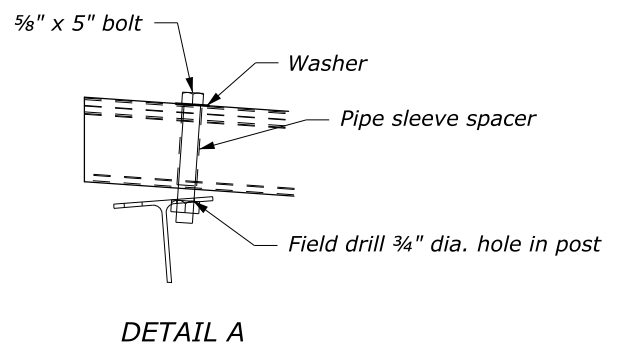
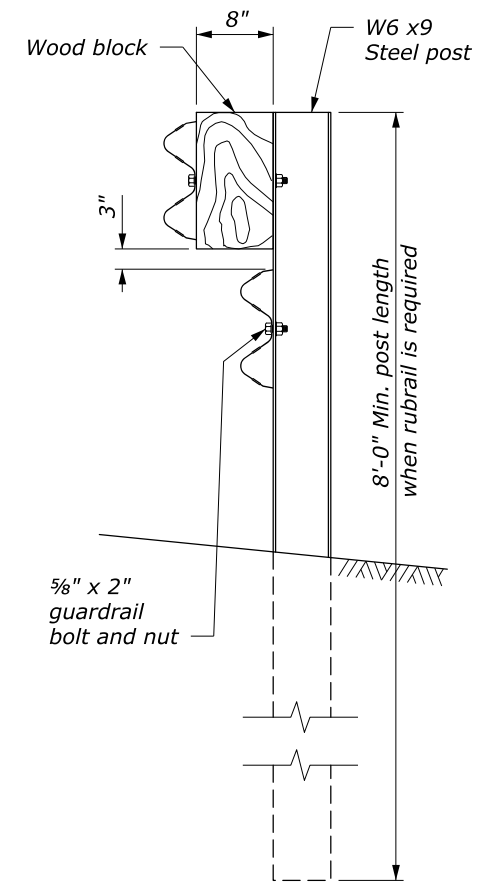
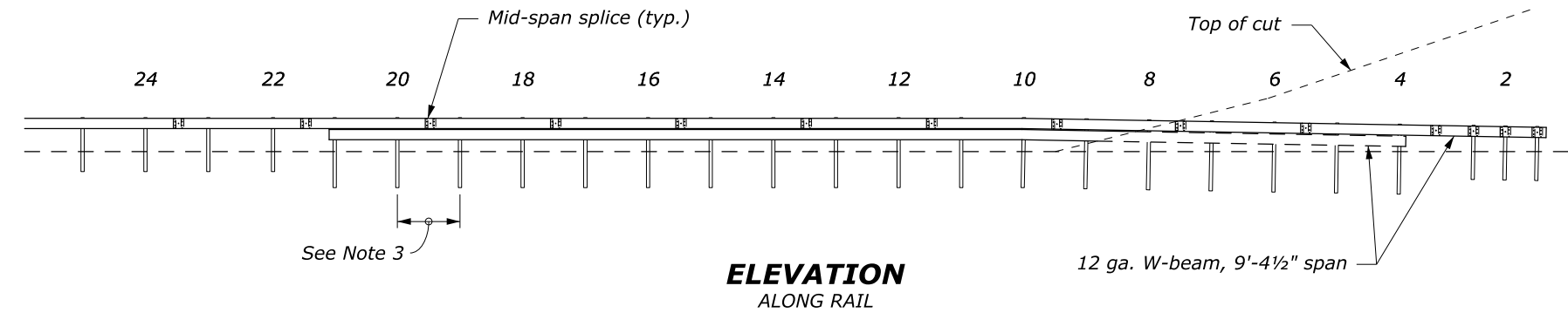


POST OFFSETS FROM EDGE OF SHOULDER	
POST	DISTANCE
1	13'-11¾"
4	10'-11"
6	8'-10¼"
10	69"

- NOTES:**
1. See Detail ET 617-31 for other details.
 2. Rail height changes 16 inches from Post 10 to Post 1 to achieve 12 inches of soil coverage at Post 1.
 3. Typical post spacing is 6 feet and 3 inches unless otherwise noted.



U.S. DEPARTMENT OF TRANSPORTATION
FEDERAL HIGHWAY ADMINISTRATION
OFFICE OF FEDERAL LANDS HIGHWAY

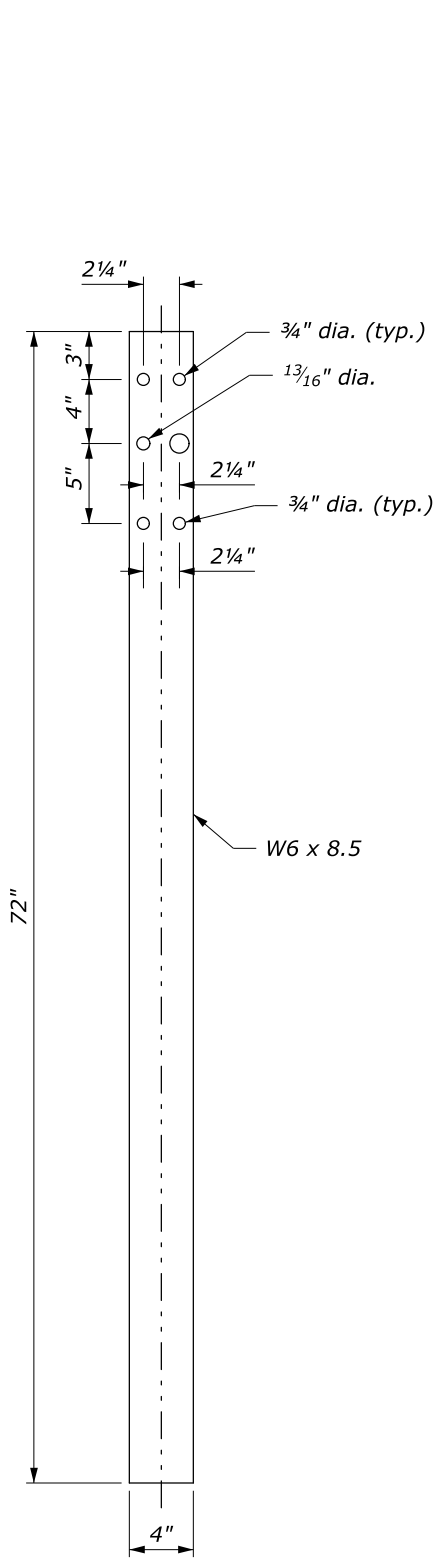
EFLHD DETAIL
**MGS W-BEAM GUARDRAIL
BACK SLOPE ANCHOR TERMINAL
TYPE MGS-BAT**
Sheet 1 of 2

DETAIL APPROVED FOR USE 2/2019
REVISED: 4/2019 9/2020

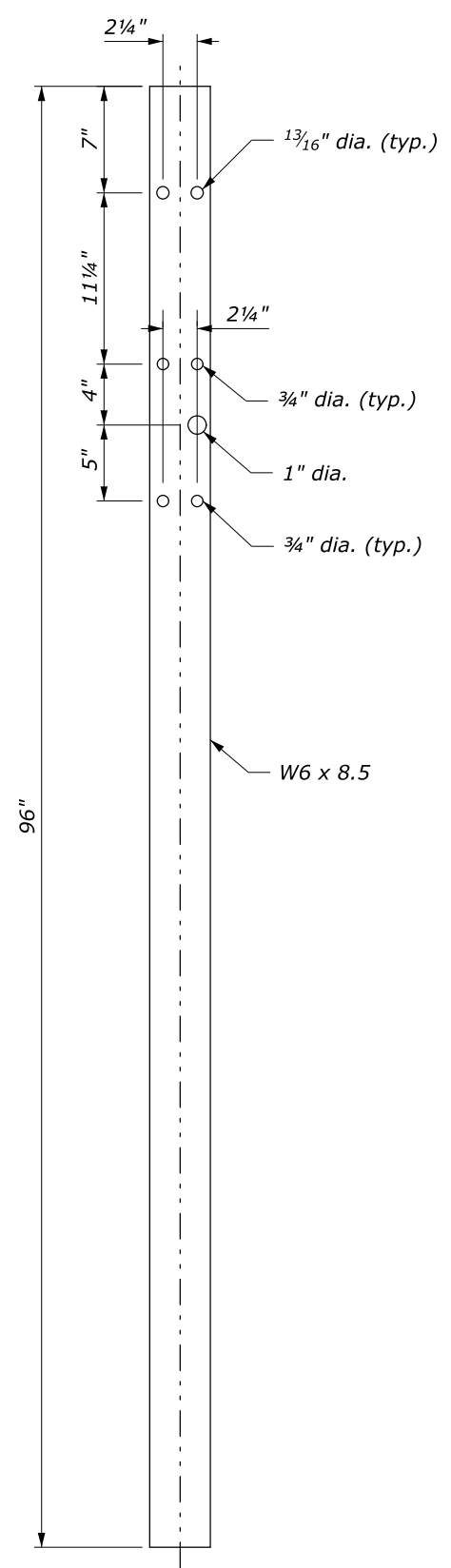
DETAIL ET 617-18

M:\Standards_and_Details\EFLHD_Detail-Drawings\FP-14\FP-14_ORD_Version\ORD_Ready\Section-617_Guardrail\st61718_MGS_EFL_TEMP.dgn [Sheet 1 of 2] 1 March 2021 12:09 PM

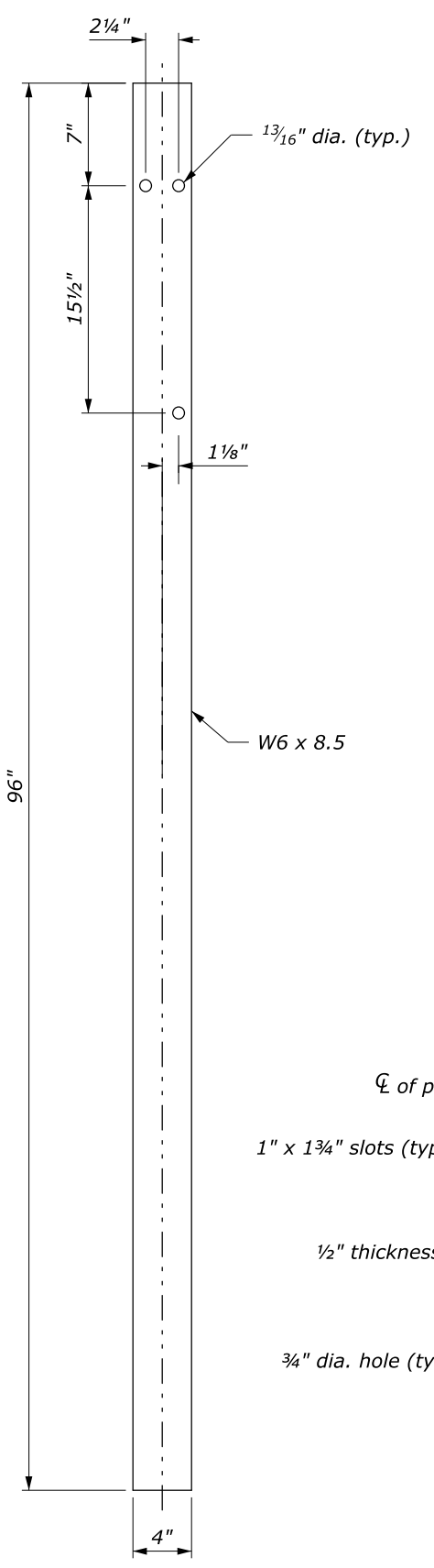
NO SCALE



POSTS 1-3



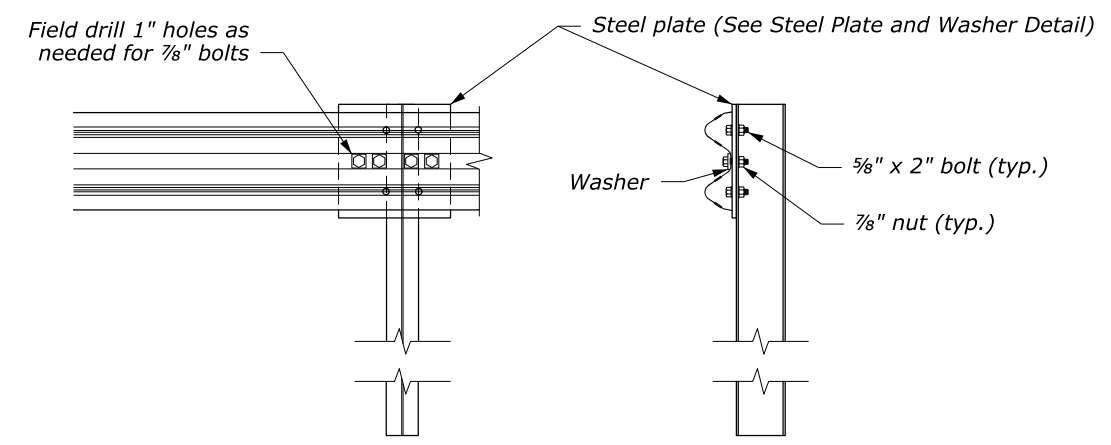
POST 4



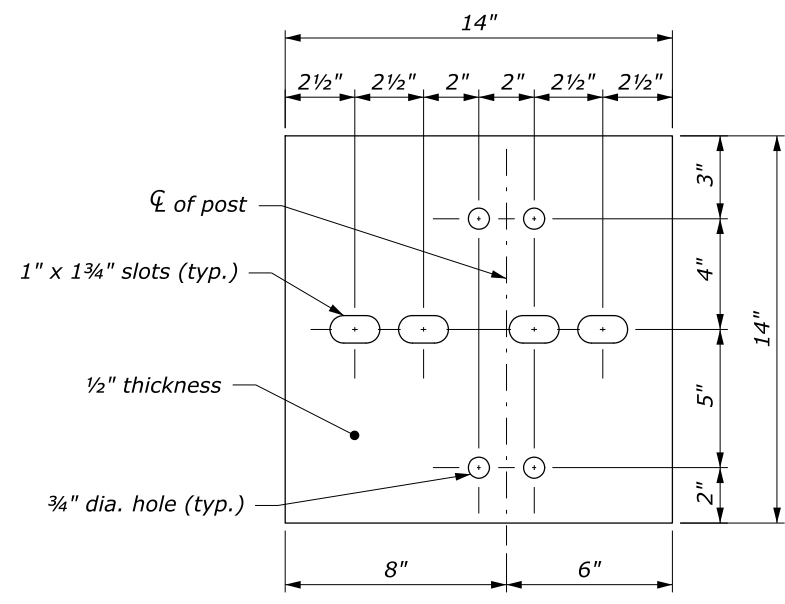
POSTS 5-21

NOTES:

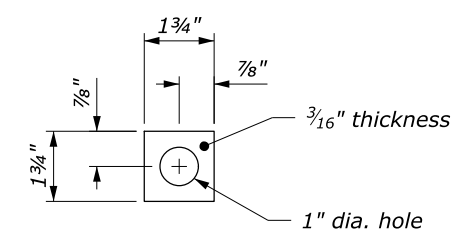
1. See Sheet 1 of 2 for terminal layout.
2. Use zinc rich paint to coat field drilled holes.
3. Anchor plate and hardware are typical on top rail of Posts 1 -3 and rub rail at Post 4.



SPECIAL RAIL TO POST CONNECTION AT POSTS 1, 2, AND 3



GALVANIZED STEEL PLATE



GALVANIZED SQUARE WASHER

STEEL PLATE AND WASHER
See Note 3

U.S. DEPARTMENT OF TRANSPORTATION
FEDERAL HIGHWAY ADMINISTRATION
OFFICE OF FEDERAL LANDS HIGHWAY

EFLHD DETAIL
**MGS W-BEAM GUARDRAIL
BACK SLOPE ANCHOR TERMINAL
TYPE MGS-BAT**
Sheet 2 of 2

DETAIL APPROVED FOR USE 2/2019
REVISED: 4/2019 9/2020

DETAIL
ET 617-18

NO SCALE

M:\Standards_and_Details\EFLHD_Detail Drawings\FP-14\FP-14_ORD_Version\ORD_Ready\Section-617_Guardrail\st61718_MGS_EFL_TEMP.dgn [Sheet 2 of 2] 1 March 2021 12:09 PM