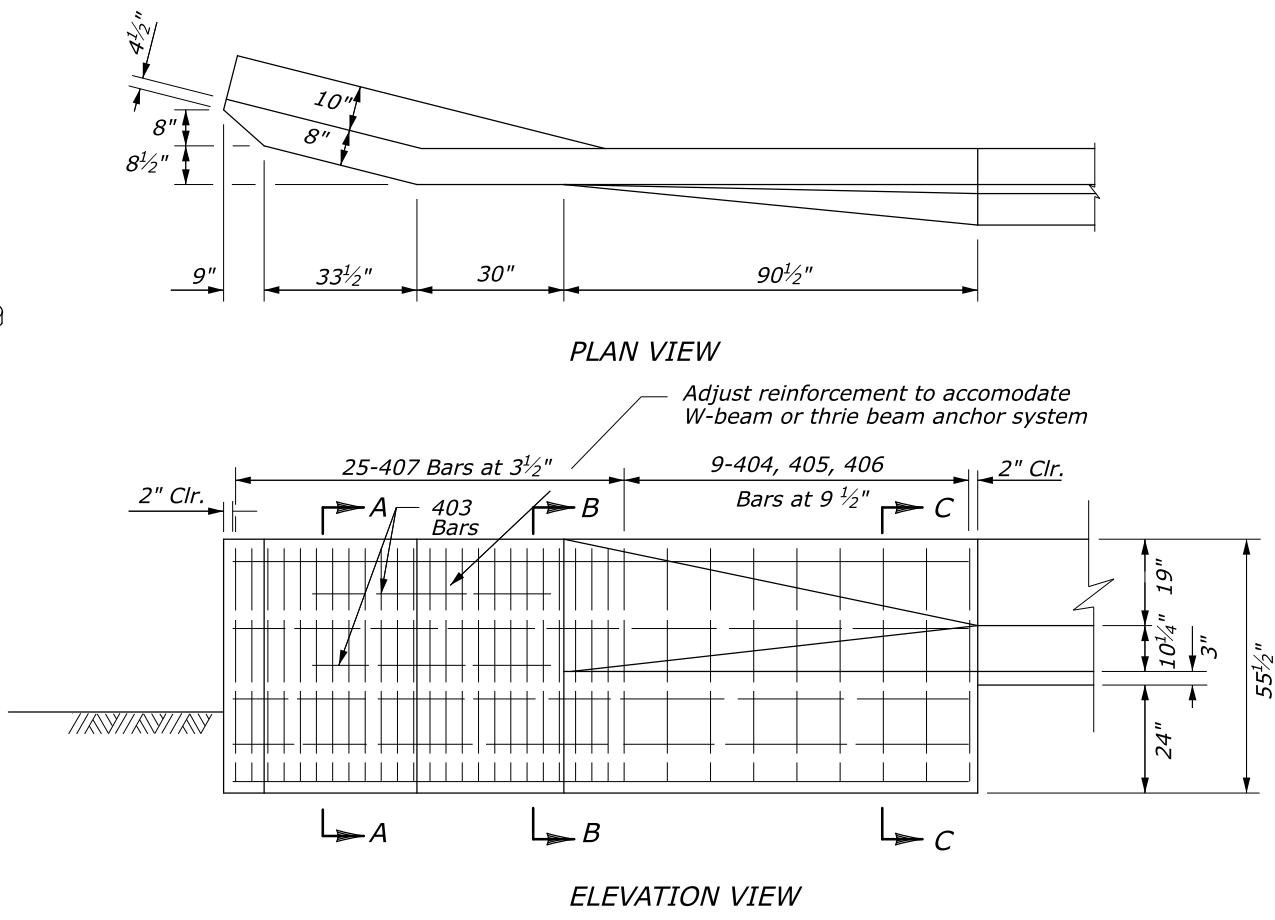
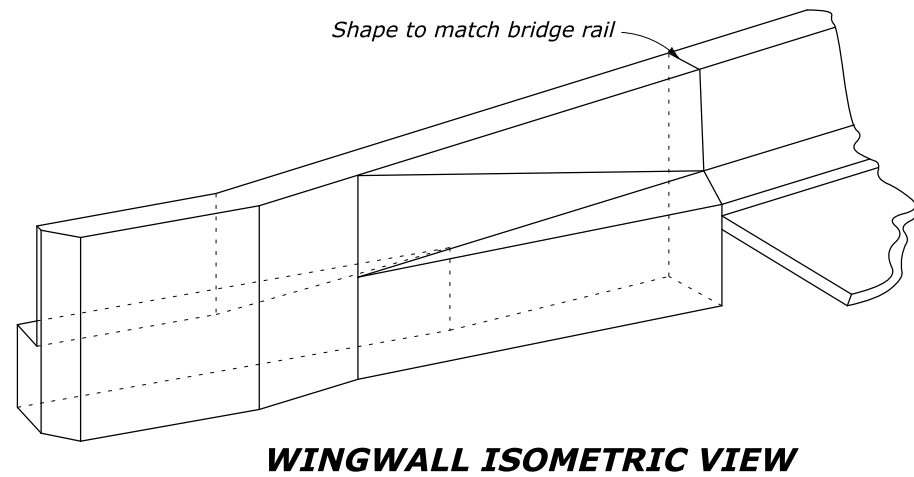
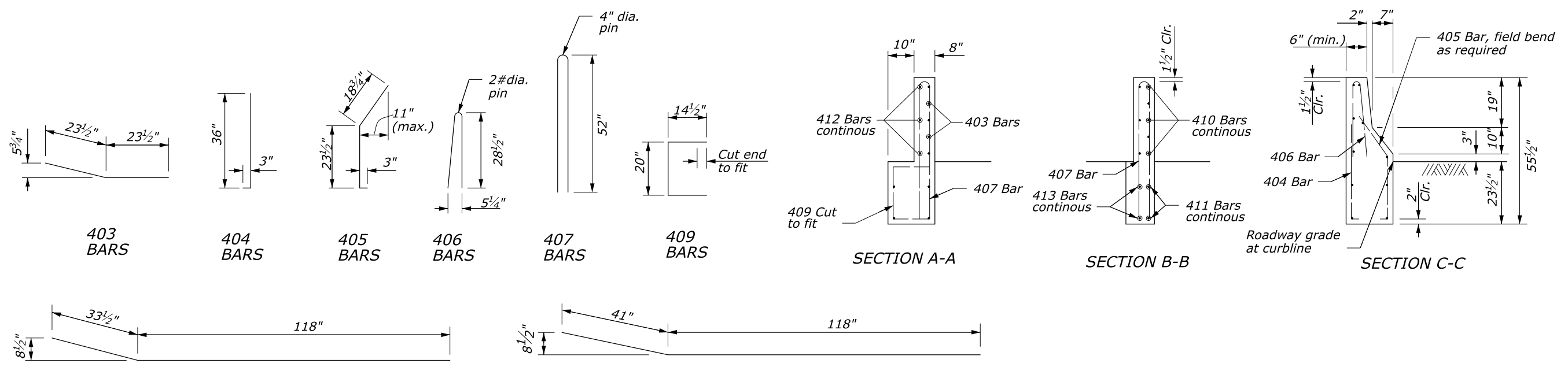


STATE	PROJECT	SHEET NUMBER



- NOTES:**
1. **CONCRETE:** Furnish Structural Concrete Class A(AE), with a specified minimum 28-day compressive strength (F'_c) of 4.35 kips/in. Vibrate all concrete. Chamfer exposed edges $\frac{3}{4}$ inch unless otherwise shown. Do not use calcium chloride additives in the concrete.
 2. Provide a minimum $1\frac{1}{2}$ -inch concrete covering to the face of any bar unless otherwise shown. All bars are #4.
 3. **FINISHING CONCRETE:** Give all concrete surfaces a Class 1 finish unless otherwise specified in the Special Contract Requirements.



U.S. DEPARTMENT OF TRANSPORTATION
 FEDERAL HIGHWAY ADMINISTRATION
 OFFICE OF FEDERAL LANDS HIGHWAY

EFLHD DETAIL

**G4 W-BEAM GUARDRAIL
 FLARED BACK PARAPET WALL
 AND SAFETY SHAPE TRANSITION**

DETAIL APPROVED FOR USE
 APPROVED: MAY 2011
 REVISED: SEPTEMBER 2020

DETAIL
 E617-32

NO SCALE

M:\PROJECTS\COLLABORATION\Louisayne_02172021_Details_Work\61732_detail.dgn [Sheet] 24 November 2020 12:10 PM