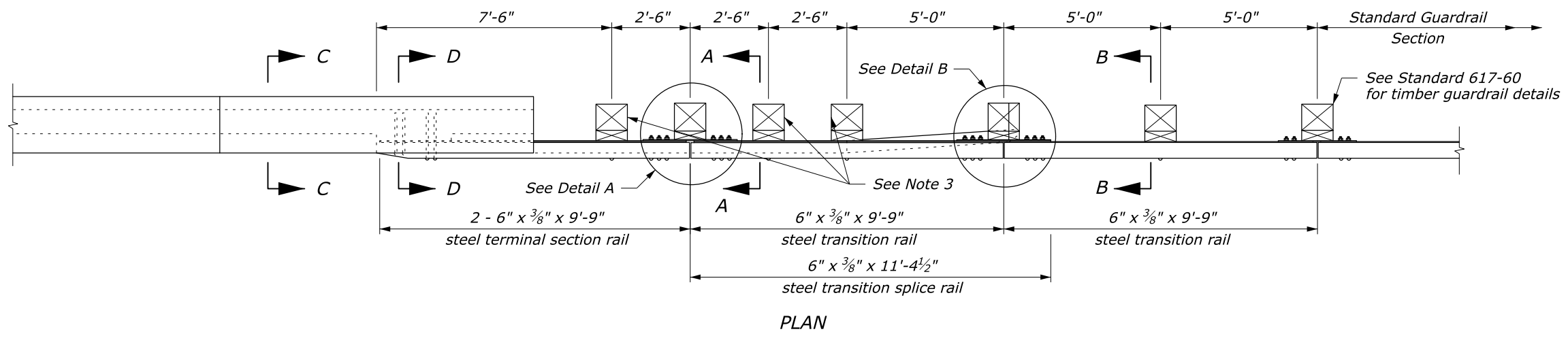
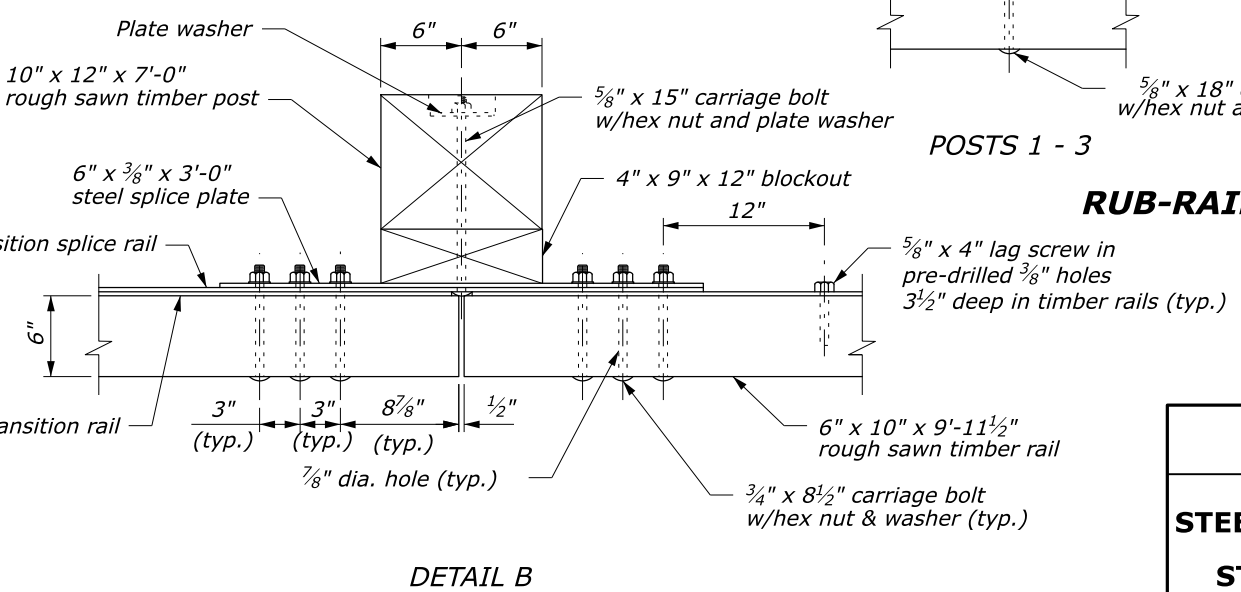
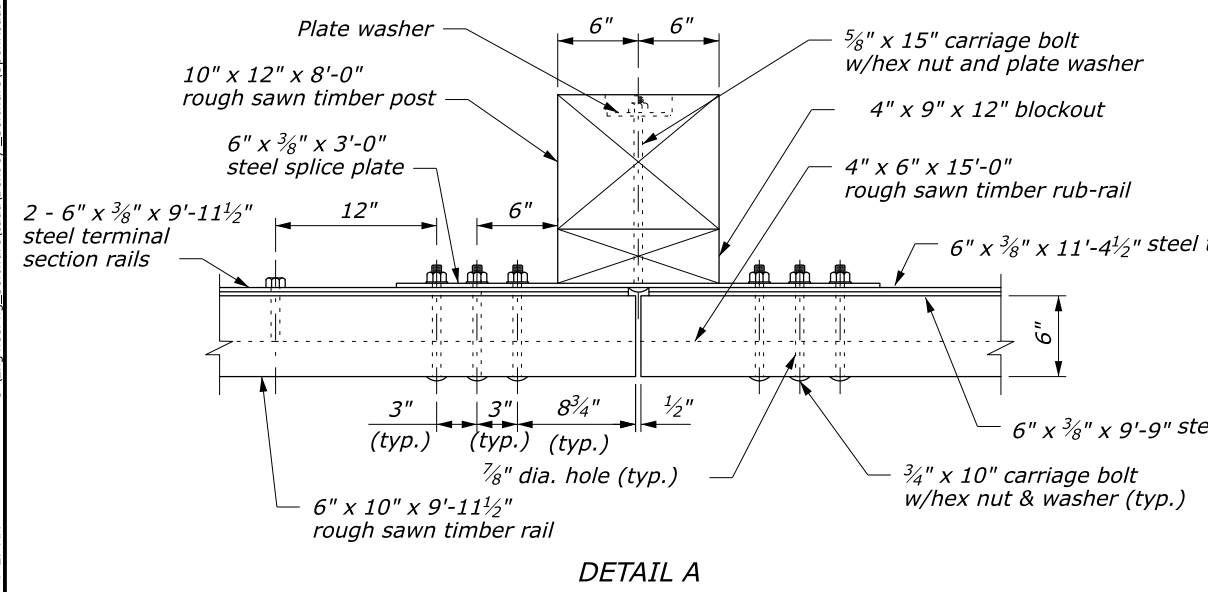
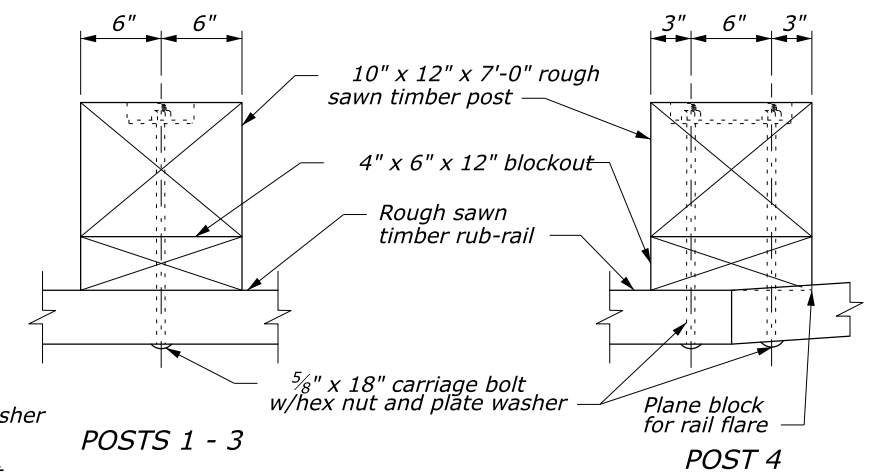
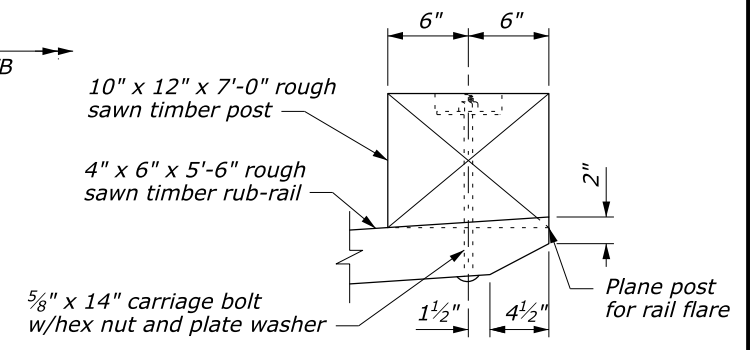
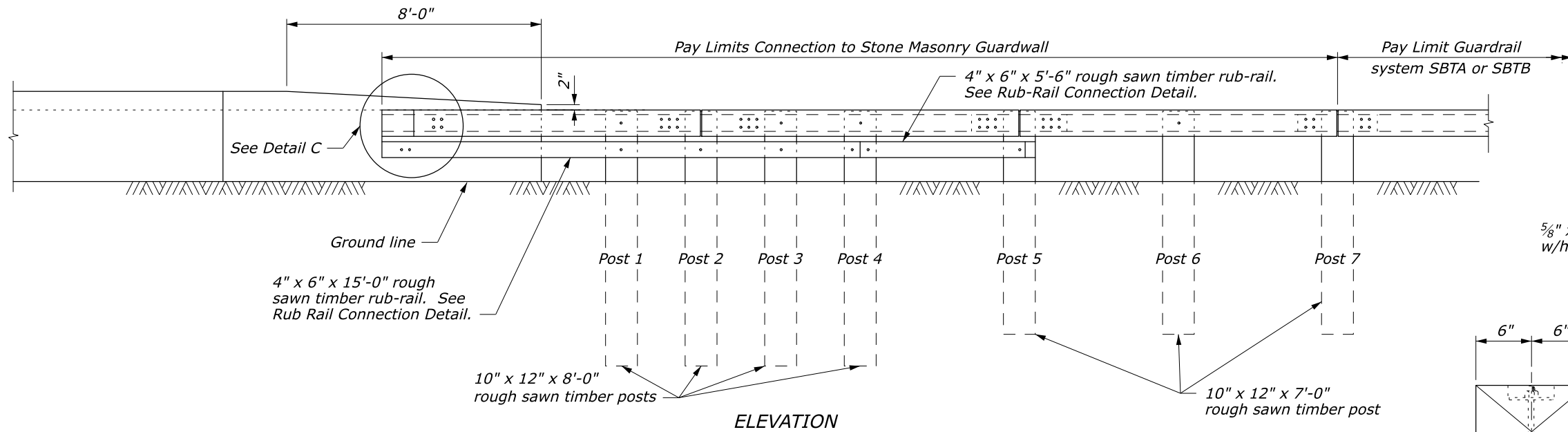


STATE	PROJECT	SHEET NUMBER



- NOTES:**
- See sheets 2 of 3 and 3 of 3 for Sections A-A through C-C, steel rail layouts, and other details.
 - Use weathering steel for all structural steel and fastener hardware.
 - For posts 1, 3, and 4, use an 8- by 9- by 12-inch block for the blockout, and a 5/8-inch by 2 1/8-foot carriage bolt with hex nut and plate washer.



POST CONNECTION

NO SCALE

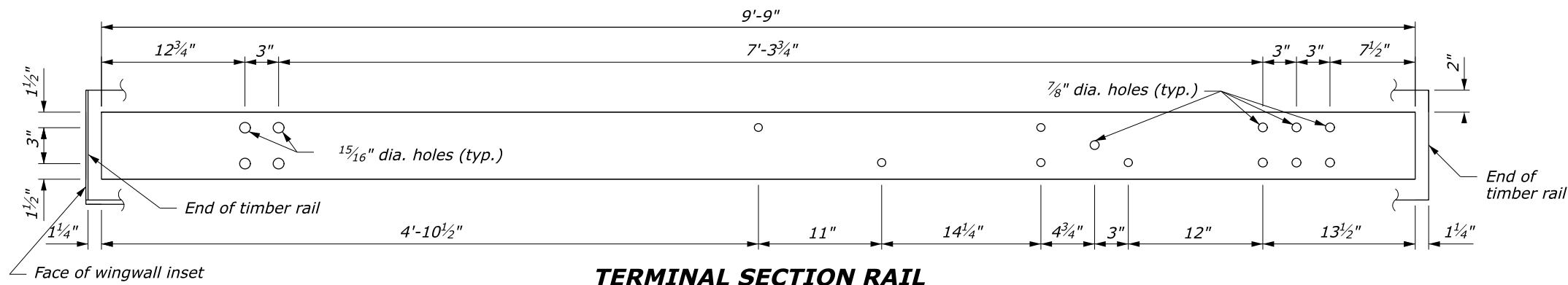
U.S. DEPARTMENT OF TRANSPORTATION
FEDERAL HIGHWAY ADMINISTRATION
OFFICE OF FEDERAL LANDS HIGHWAY

EFLHD DETAIL
STEEL-BACKED TIMBER GUARDRAIL
TL-2 CONNECTION TO
STONE MASONRY GUARDWALL
Sheet 1 of 3

REVISID: 1/2008 5/2016 4/2020 9/2020

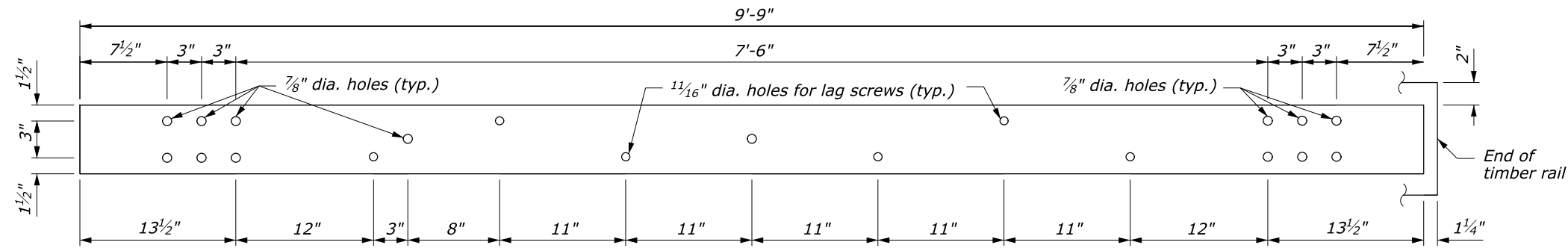
DETAIL
ET 617-64

G:\Engineering Software\Bentley Software\OpenRoads Designer\CONFIG\OpenRoads Designer_CE WSV5\OpenRoads Designer_CE Configuration\Organization\Civil\FLH_Survey\Standards-WSSVA\Civil\FLH-Cells.cel [Base: B.US] 12 March 2020 7:27 AM

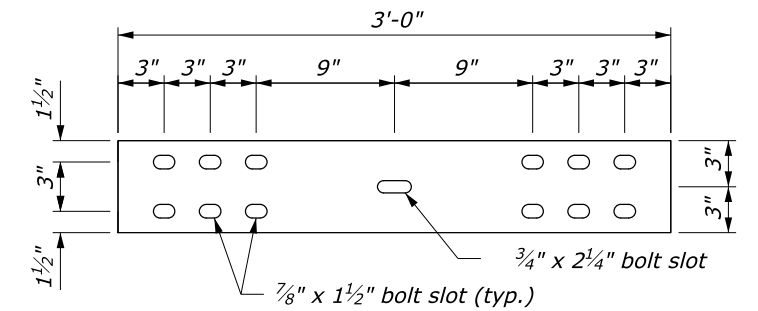


TERMINAL SECTION RAIL
6" x 3/8" x 9'-9"

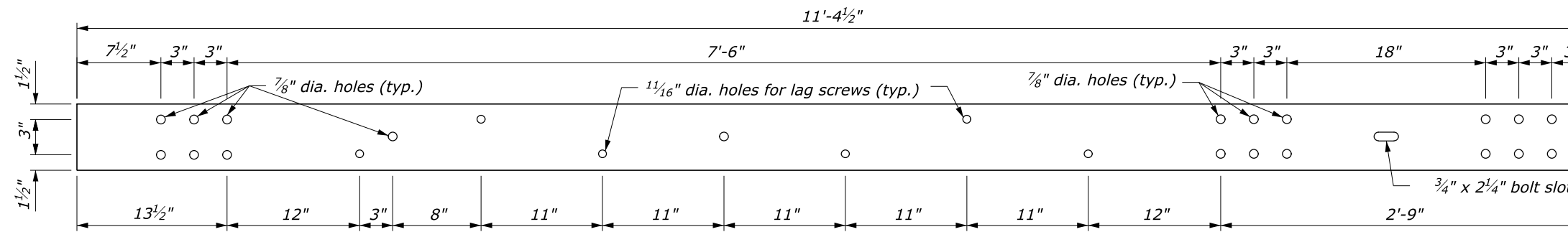
NOTE:
Pre-drill 3/4-inch holes in blockouts and posts.



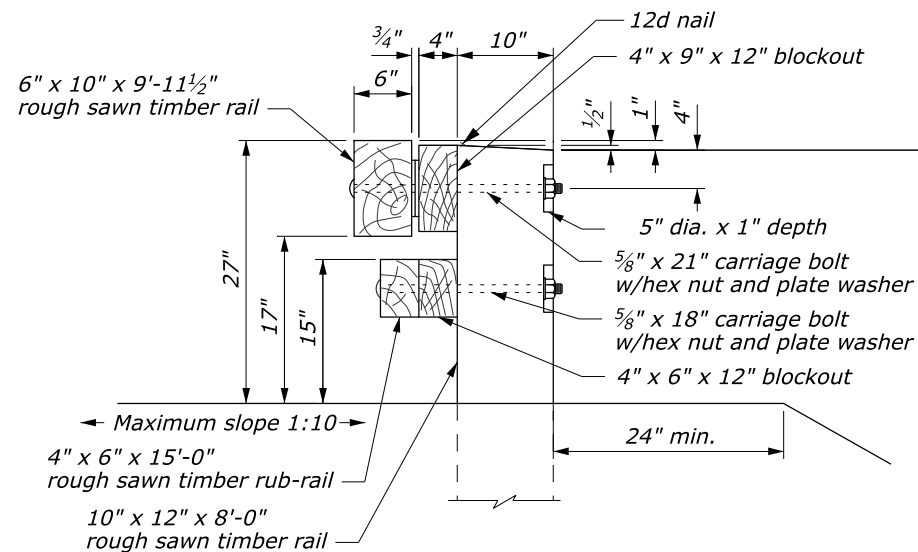
TRANSITION RAIL
6" x 3/8" x 9'-9"



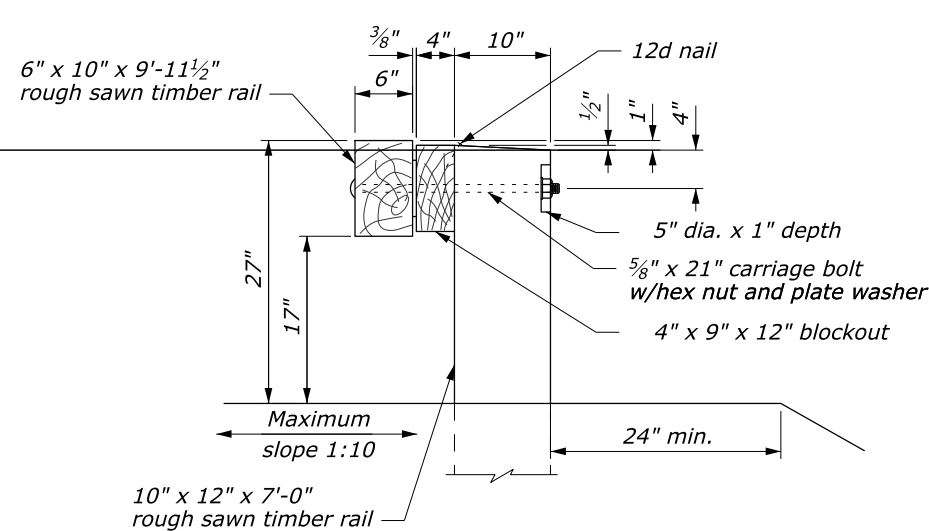
SPLICE PLATE
6" x 3/8" x 3'-0"



TRANSITION SPLICE RAIL
6" x 3/8" x 11'-4 1/2"



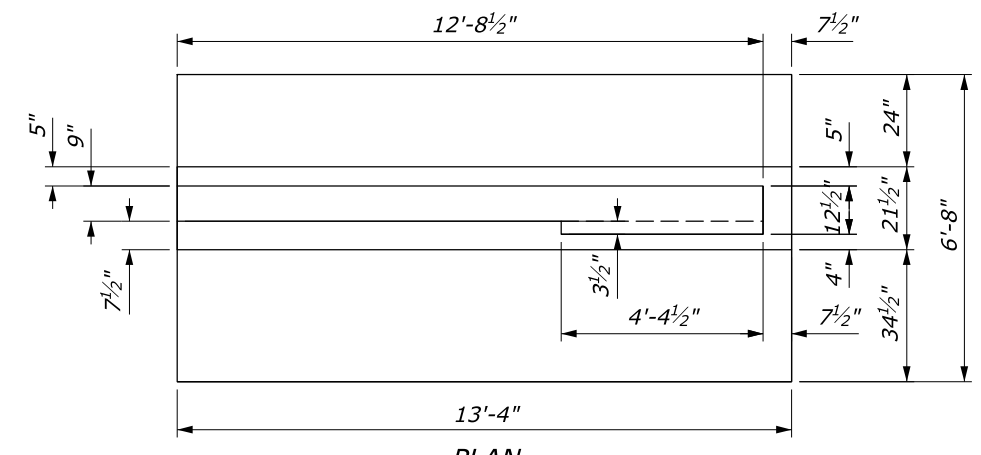
SECTION A-A



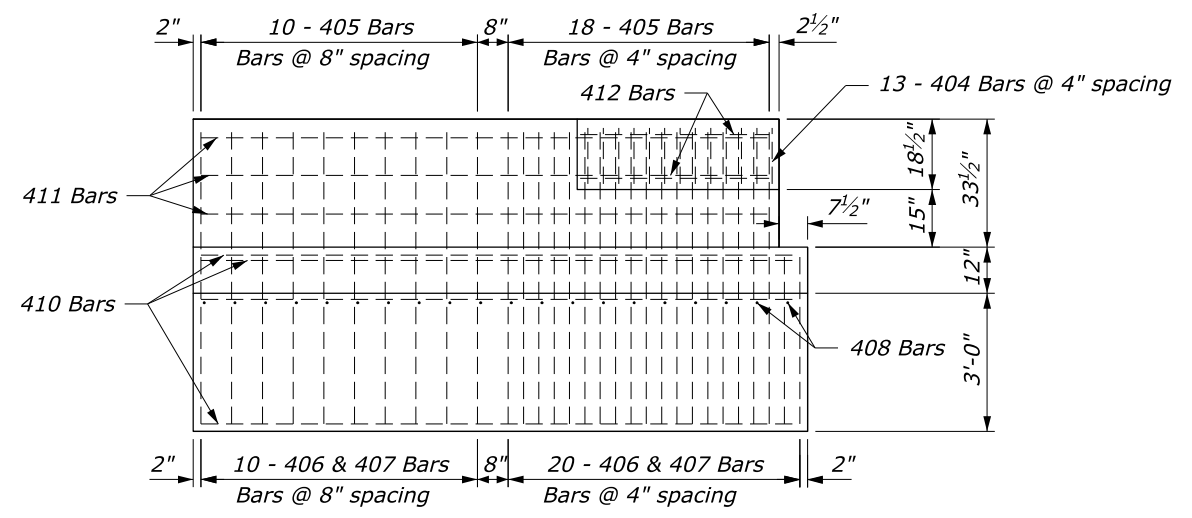
SECTION B-B

NO SCALE

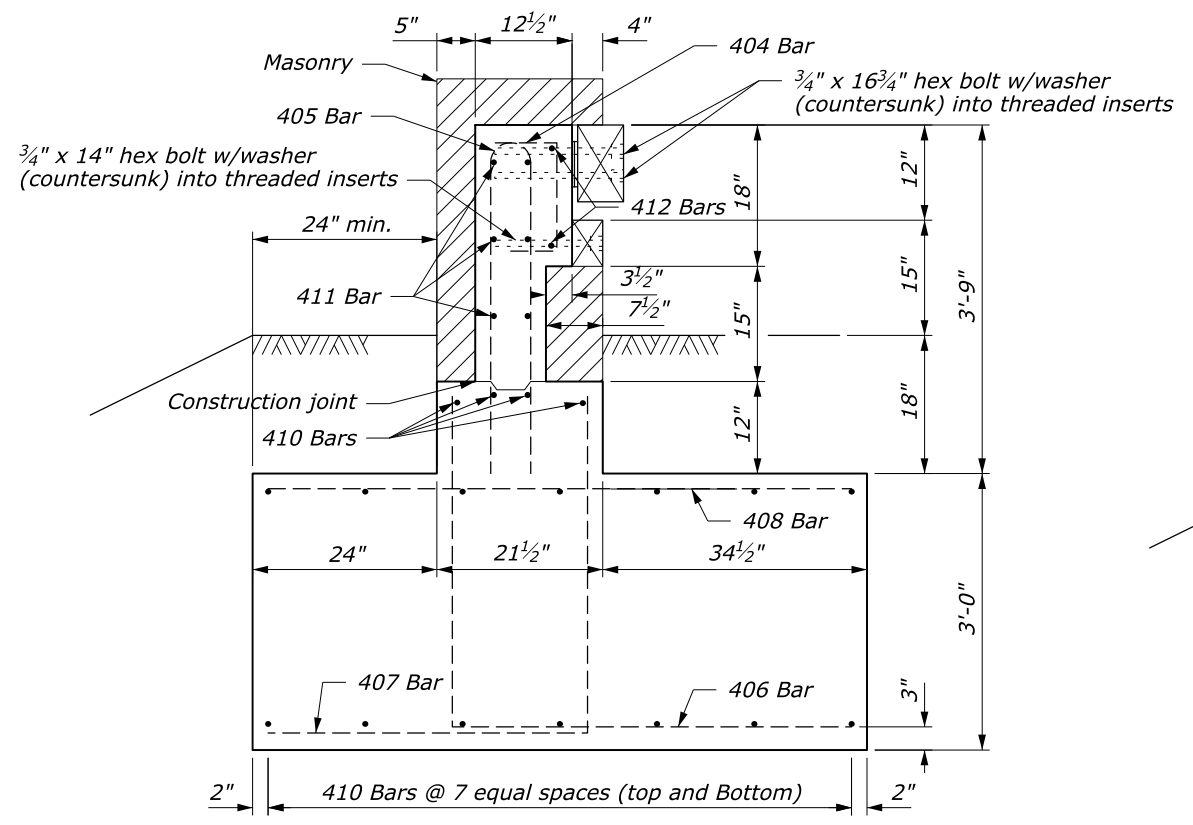
STATE	PROJECT	SHEET NUMBER



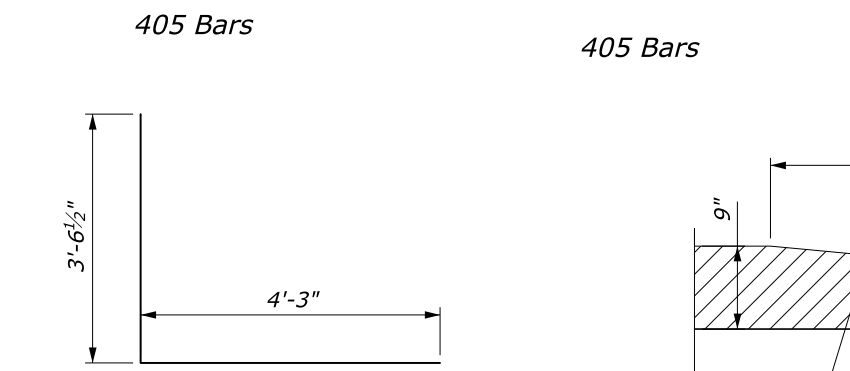
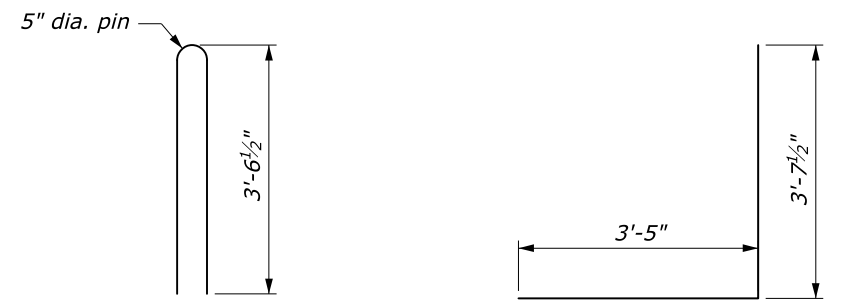
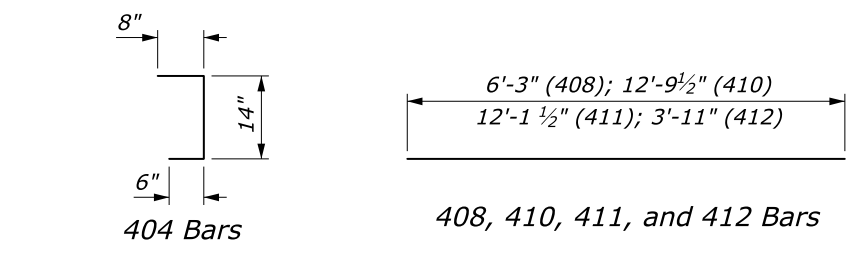
PLAN



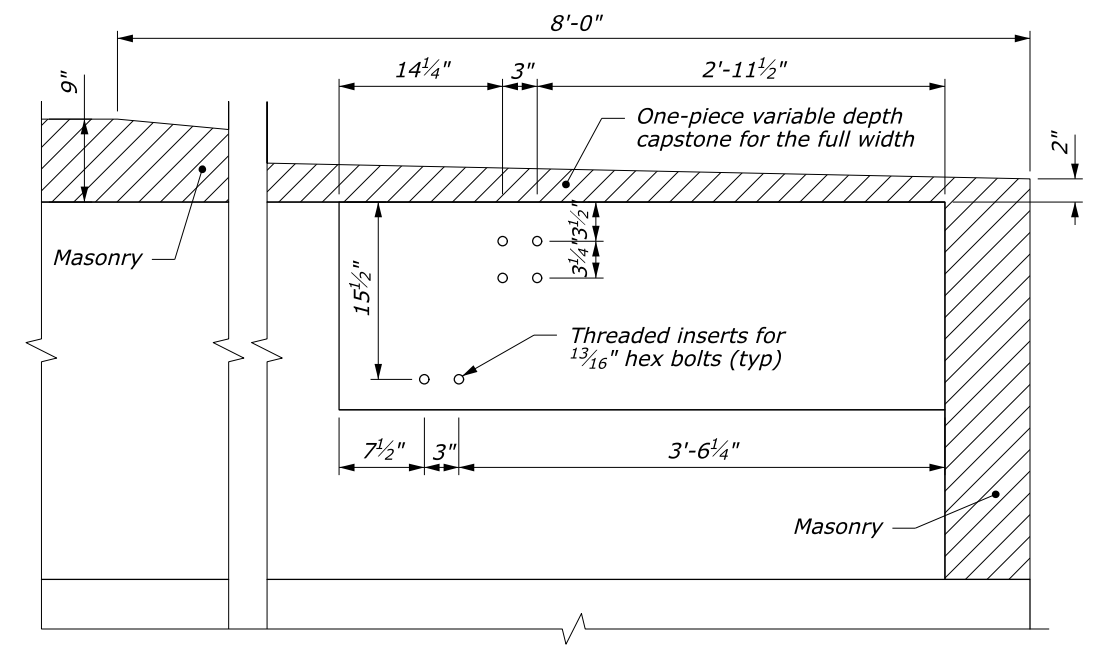
ELEVATION



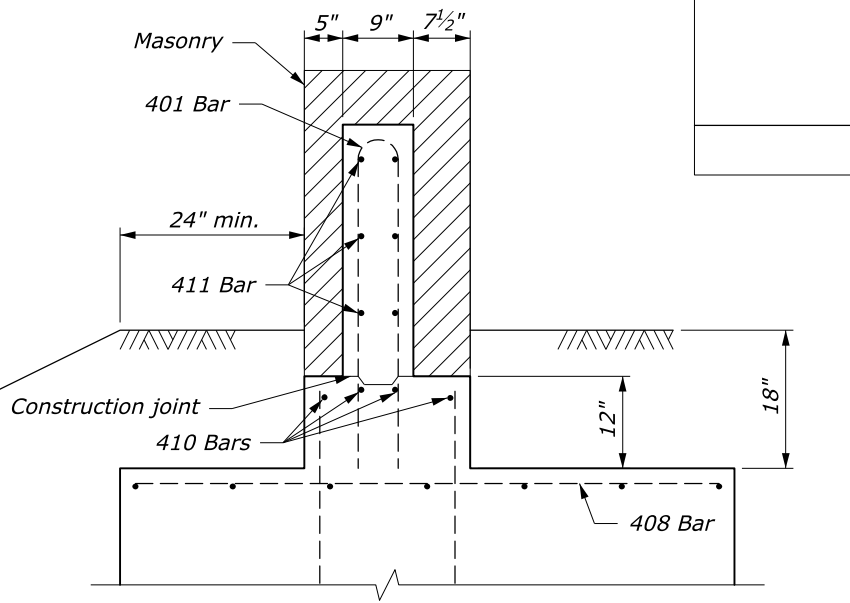
**SECTION D-D
PARAPET END BLOCK**



BAR DETAILS



DETAIL C



SECTION C-C

- NOTES:**
- Furnish structural concrete Class A(AE), with a specified minimum 28-day compressive strength $F'c=4350$ psi. Vibrate all concrete. Chamfer exposed edges $3/4$ inches unless otherwise shown. Do not use calcium chloride additives in the concrete.
 - Furnish reinforcing steel Grade 420 (ASTM A615M-96a, Grade 420) deformed billet steel bars conforming to AASHTO M31M. Ensure the minimum concrete covering to the face of any bar is 2 inches unless otherwise shown. Ensure all bars are U.S. Customary size #5.
 - Construct footing against undisturbed material or backfill with well compacted granular material.

U.S. DEPARTMENT OF TRANSPORTATION
FEDERAL HIGHWAY ADMINISTRATION
OFFICE OF FEDERAL LANDS HIGHWAY

EFLHD DETAIL
**STEEL-BACKED TIMBER GUARDRAIL
TL-2 CONNECTION TO
STONE MASONRY GUARDWALL**
Sheet 3 of 3

G:\Engineering_Software\OpenRoads_Designer\CONFIG\OpenRoads_Designer_CE\W5\5\OpenRoads_Designer_CE\Configuration\Organization-Civil\FLH_SurF\Standards-WSSVA\Cell\FLH-Cells.cel [Base.B.US] 12 March 2020 7:27 AM