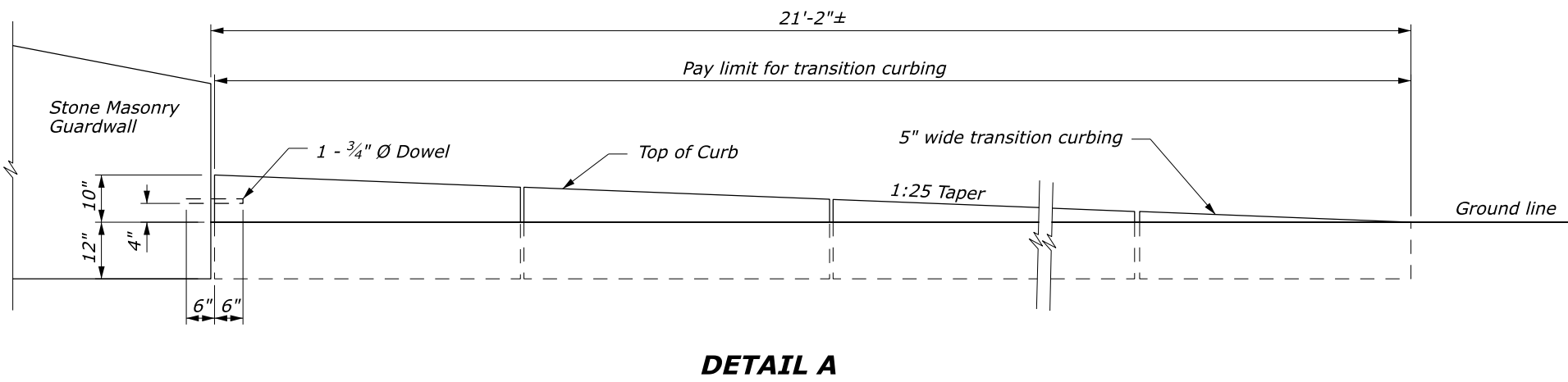
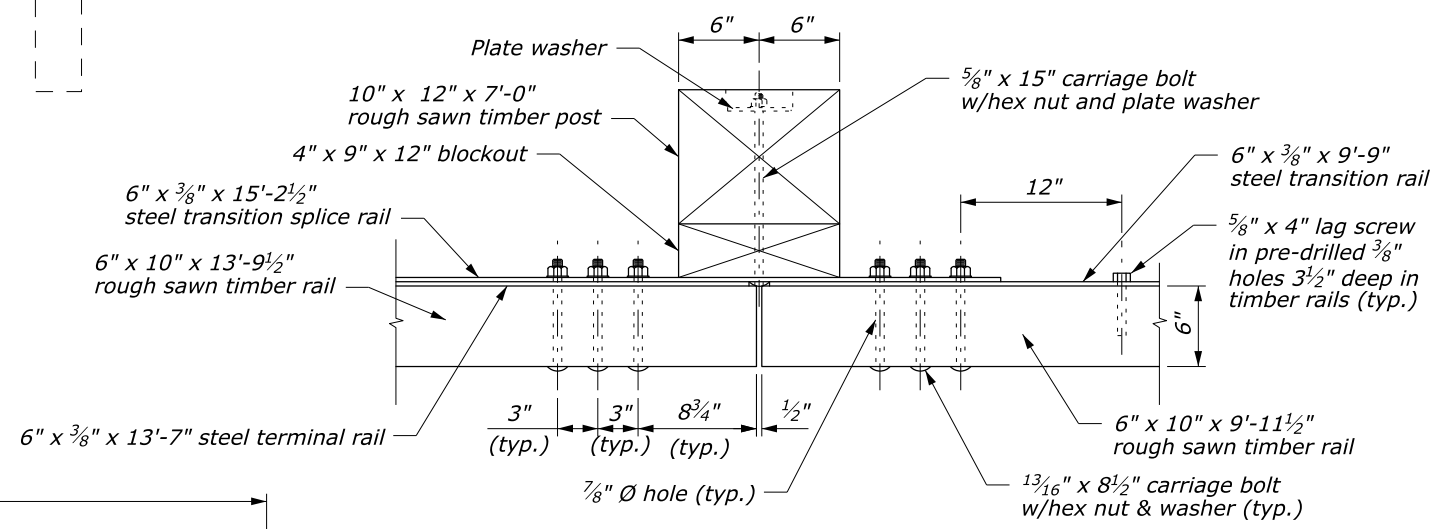
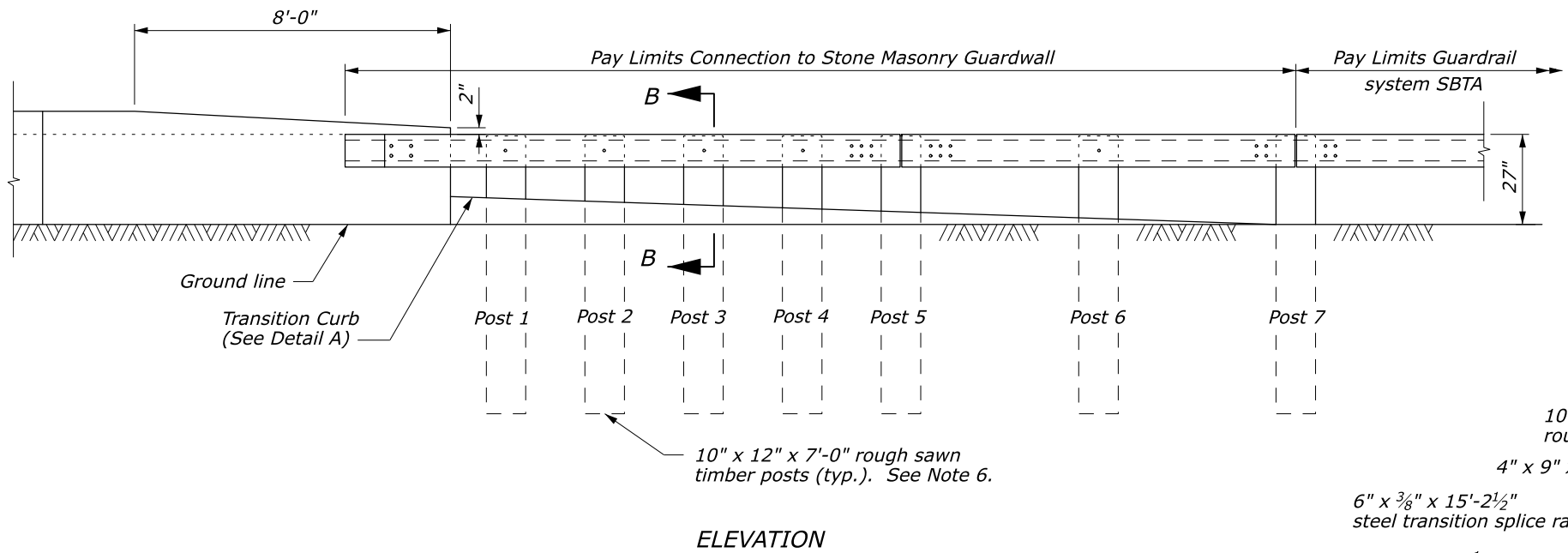
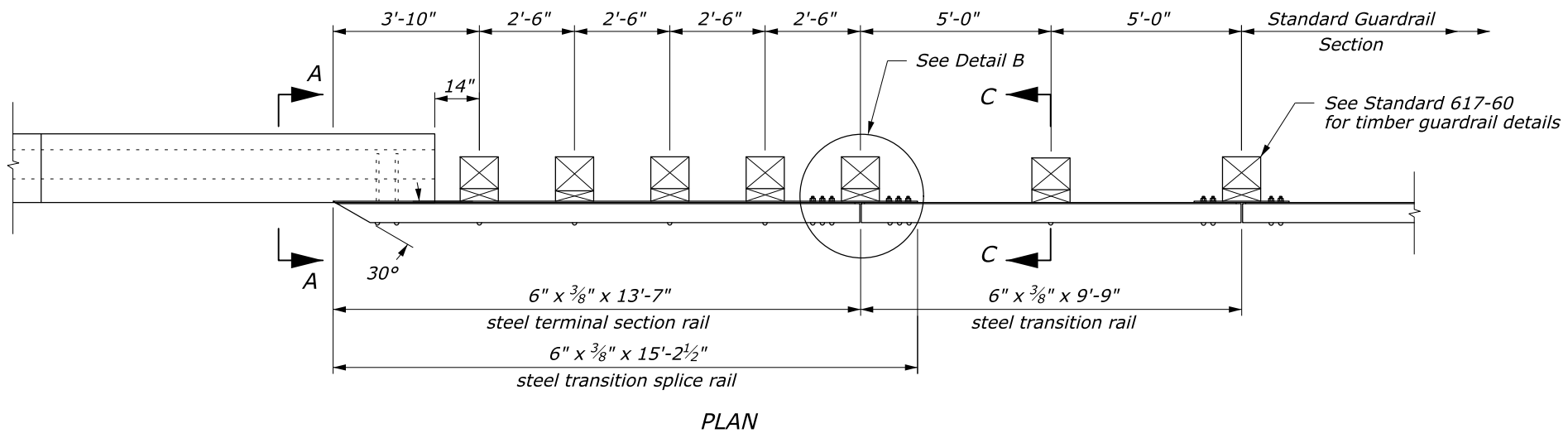


STATE	PROJECT	SHEET NUMBER



NOTES:

1. See Sheet 2 of 2 for Sections A-A through C-C, steel rail layouts, and other details.
2. Use weathering steel for all structural steel and fastener hardware.
3. Transition curbing (including dowel) will be paid for at the contract unit price for transition curbing.
4. Install transition curbing of material type specified in plans.
5. Curb may be continuous or slabs at least 4 1/2 feet in length. Install faces of slabs evenly and with maximum 1/8-inch separation.
6. If steel posts are required, substitute wood post with 6- by 9-inch by 6 1/2-foot long steel post.

U.S. DEPARTMENT OF TRANSPORTATION
FEDERAL HIGHWAY ADMINISTRATION
OFFICE OF FEDERAL LANDS HIGHWAY

EFLHD DETAIL
**STEEL-BACKED TIMBER GUARDRAIL
TL-3 CONNECTION TO
STONE MASONRY GUARDWALL**
Sheet 1 of 2

NO SCALE

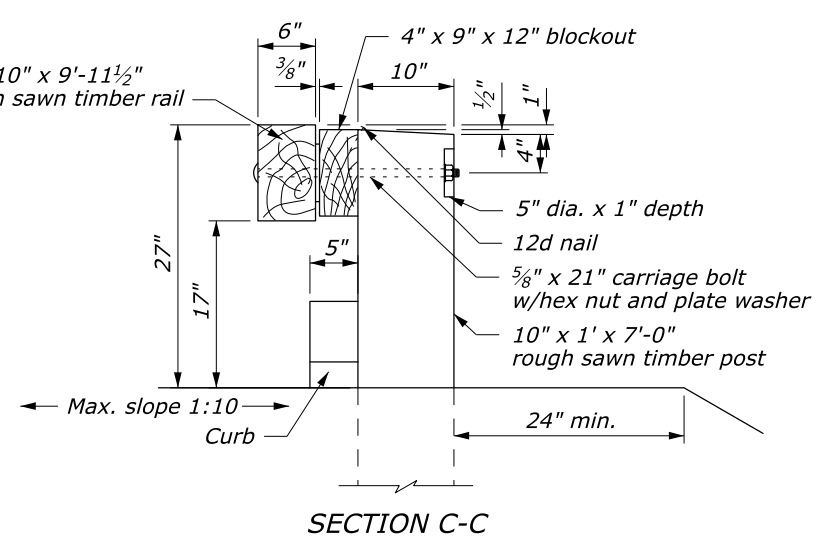
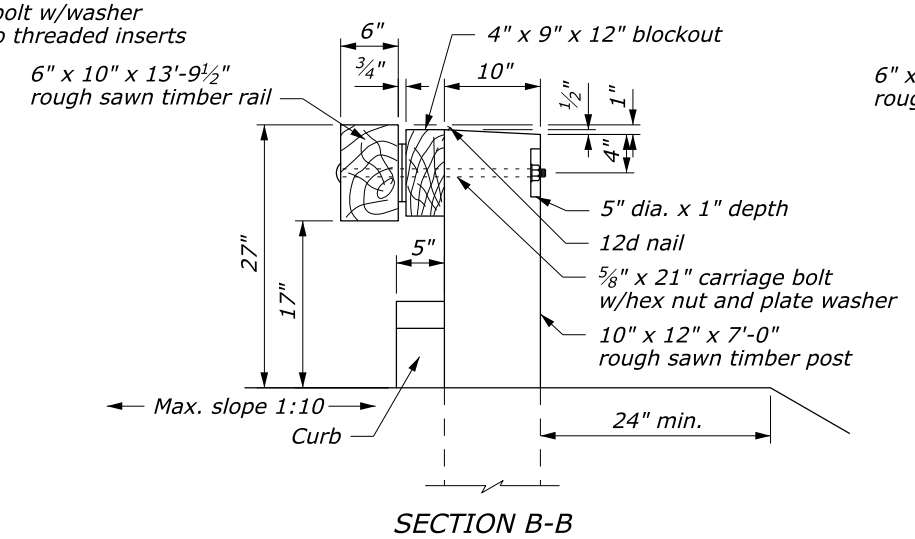
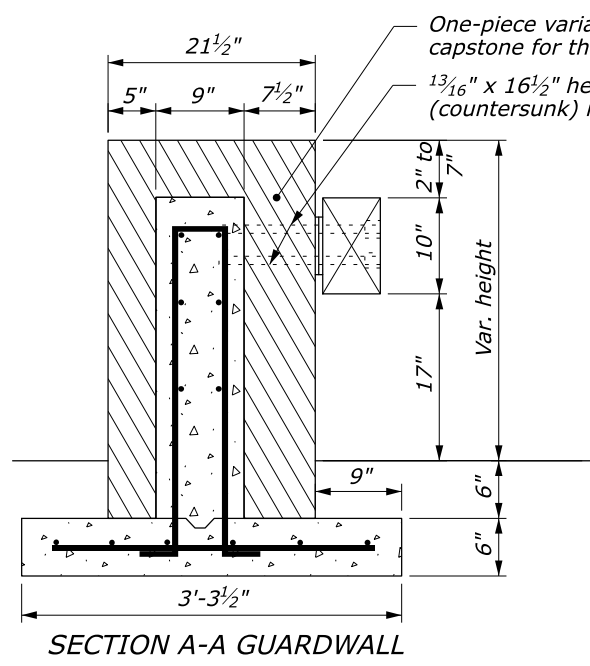
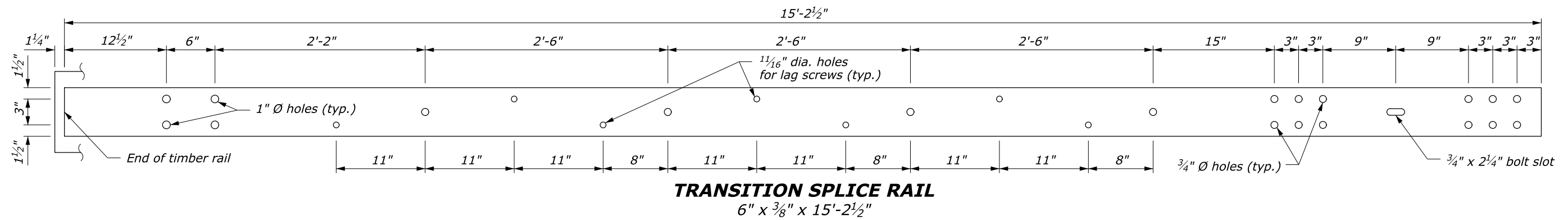
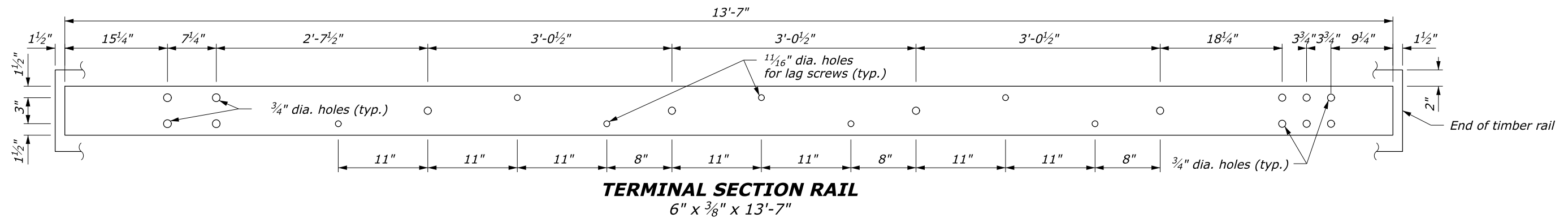
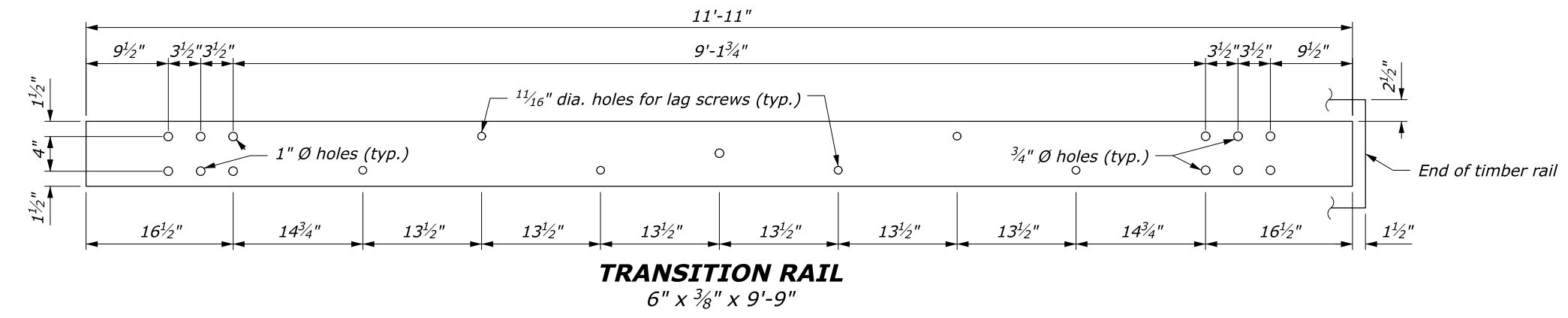
REVISID: 1/2008 5/2016 4/2020 9/2020

DETAIL
ET 617-65

G:\Engineering\Software\OpenRoads_Designer\CONFIG\OpenRoads_Designer_CE_WS5\OpenRoads_Designer_CE_WS5\OpenRoads_Designer_CE_WS5\Cell\FLH-Cells.cel [Base.B.US] 12 March 2020 7:27 AM

STATE	PROJECT	SHEET NUMBER

NOTE:
Pre-drill 1 1/16-inch holes in blockouts and posts.



U.S. DEPARTMENT OF TRANSPORTATION
FEDERAL HIGHWAY ADMINISTRATION
OFFICE OF FEDERAL LANDS HIGHWAY

EFLHD DETAIL
STEEL-BACKED TIMBER GUARDRAIL
TL-3 CONNECTION TO
STONE MASONRY GUARDWALL
Sheet 2 of 2

NO SCALE

REVISID: 1/2008 5/2016 4/2020 9/2020

DETAIL
ET 617-65

M:\Standards_and_Details\EFLHD_Detail Drawings\FP-14\FP-14_ORD_Version\ORD_Ready\Section-617_Guardrail\st61765_EFL_TEMP.dgn [Sheet-2] 21 December 2020 12:32 PM